

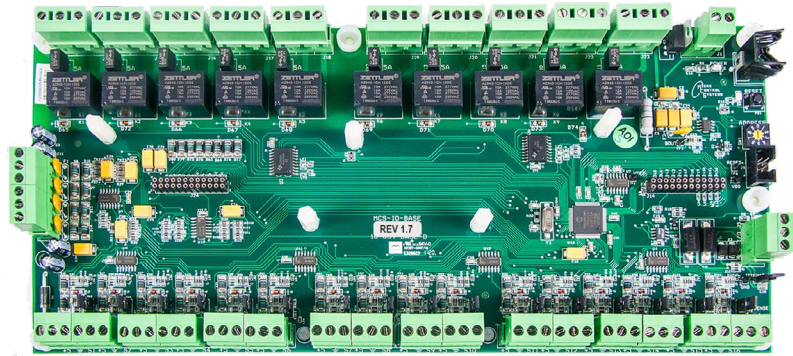


# MCS-REMOTE-IO-BASE

## Description & Specifications



Part # MCS-REMOTE-IO-BASE



### Description

The **MCS-REMOTE-IO-BASE** provides a flexible and cost effective way to allow remote expansion for the **MCS-MAGNUM**. Because communication is over a RS-485 long distance two-wire differential network transmission system, the enclosure can be located up to 5,000 feet away. Each MCS-SI-BASE has a stand-alone microprocessor which communicates with a MCS- MAGNUM over the MCS-I/O port at 38,400 baud. All data is check summed with auto error correction.

MCS-IO-BASE board is powered by a 12VDC regulated power supply and has a automatic power fail reset system.

The printed circuit board is a four layer board with a separate power and ground plane to provide the ultimate in efficient electrical noise suppression. This coupled with noise suppression circuitry makes the MCS-IO-BASE virtually impervious to electrical noise.

The MCS-IO-BASE provides sixteen sensor inputs. The inputs are universal and support either a digital or analog input signal.

The MCS-IO-BASE also provides four analog outputs that provide independent DC voltage outputs from 0 to 10VDC. These analog outputs are controlled by the MAGNUM micro controller.

Each input and output consists of a three position removable terminal block, providing +5vdc, ground and signal in. A polyfuse protects the +5vdc line from shorted sensors.

The MCS-IO-BASE also provides ten relay outputs fused at 5.0 amps. Each relay output provides common, normally open and normally closed contacts on a removable terminal block. The terminal blocks provide screw connections which eliminate the need for Sta-Kons.

### Specifications

#### NEMA Rating – Type 1 Control Panel

Indoor use to provide a degree of protection to personnel against incidental contact with the enclosed equipment, to provide a degree of protection against falling dirt.

- Flush slotted latch operated with a screwdriver
- Butt hinges
- Mounting holes on back of enclosure
- 16 gauge steel
- FINISH - ANSI 61 gray polyester powder paint finish inside and out over pretreated surfaces

Dimensions..... 18.2”w x 24.75”h x 8”d  
 Mounting Holes..... Mounts with four pre-drilled 9/32” holes

#### Controller

Dimensions..... 12.0”l, 5.5”w, 2.50”h  
 Mounting..... Mounts on a backplane using six #6 sheet metal screws  
 Operating Temperature -40°F to +158°F (-40°C to +70°C)  
 Operating Humidity.....0-95% Non-Condensing  
 Storage Temperature..... -40°F to +158°F (-40°C to +70°C)  
 Sensor Inputs ..... 16 0-5vdc  
 Analog Outputs..... 4 outputs 0-10vdc  
 Relay Outputs..... 10 outputs 5amps @ 230VAC  
 Printed Circuit Board ..... Four layer with separate power and ground planes  
 Input Power (Standard) ..... 12 vdc Regulated Power Supply  
 Minimum (Brown in) .....9.30 vdc  
 Amp Draw (Loaded) .....538.0 mA  
 MCS-I/O Comm Port ..... 1 @ 38,400 Baud  
 Power Detection ..... Automatic Power Fail Reset

Input Power (Standard) ..... 90W 12VDC Enclosed Switching Power Supply

MCS-SHIELDWIRE-GROUNDING-KIT  
 Package of 2

