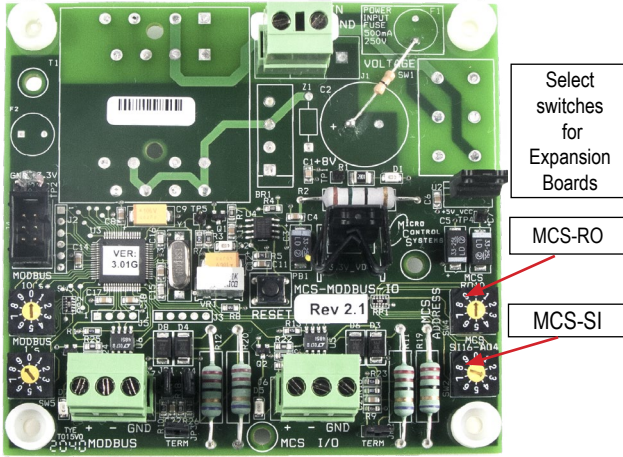




MCS-MODBUS-I/O-12

Description & Specifications



Part # **MCS-MODBUS-I/O-12**

Description

The **MCS-MODBUS-I/O-12** gives the MCS-MAGNUM the ability to act as a Modbus Master using the Modbus RTU Protocol. This allows the **MCS-MAGNUM** to communicate to Modbus slave devices (such as Variable Frequency Drives, Compressors, etc.) to send and access parameters.

The MCS-MODBUS-I/O-12 performs like a **MCS-RO-BASE** and **MCS-SI-BASE** expansion boards to the MCS-MAGNUM. This allows the MCS-MAGNUM to control 10 relays, 4 analog outputs and read 16 sensors.

Specifications

- Dimensions..... 4.25" w, 4.00" h, 2.50" d
- Mounting Holes..... 4 holes using #6 screws through nylon collars at corners of board
- Cover..... Lexan with standoffs
- Operating Temperature..... -40°F to +158°F (-40°C to +70°C)
- Operating Humidity..... 0-95% Non-Condensing
- Storage Temperature..... -40°F to +158°F (-40°C to +70°C)
- Printed Circuit Board..... Four layer with separate power and ground planes
- Input Power (Standard)..... 12 vdc Regulated Power Supply
- Minimum (Brown in) 8.94 vdc
- Amp Draw (Loaded) 87.0 mA
- Power Detection..... Automatic power fail reset
- MCS-I/O Comm Port..... 1 at 38,400 baud
- Modbus Comm Port..... RS485 with optional baud rates of 9600, 19200, and 38400
- Other Settings..... 1 stop bit, 8 data bits, No Parity

Packaging

- Kit of (4) #6 x 1" phillips panhead zinc plated steel screws
- Ship Weight 0.87 lb (approx)
- Box Dimensions..... 5.75" x 5.25" x 3.25" (approx)

Multiple MCS-MODBUS-I/O-12 boards may be connected to the MCS-MAGNUM following MCS-I/O standards.

The MCS-MODBUS-I/O-12 has pre-defined configurations that are field selectable via the PROGRAM TYPE dials, up to 99 different slave devices, **one Modbus per slave**.

Please see the MCS-MODBUS manual for a current list of inputs and outputs for the pre-defined configurations. The MCS-MODBUS can be shipped from the factory with the switches set for your configuration.

By setting the program select to '9', the MCS-MODBUS-I/O board can also be configured by the user with free configuration software, MCS-CONNECT.

PROGRAM SELECT CHART

Firmware Ver. 3.01L	
PROGRAM SELECT	CONFIGURATION NAME
0	YASKAWA VFD A1000-HARDWIRED / MODBUS
1	TURBOCOR CMP
2	Reserved for future
3	DANFOSS VLT DRIVE
4	BITZER Compressor
5	DANFOSS CDS 303 DRIVE
6	EMERSON_CSD-100
7	MCS-POWERMETER 3037
8	RUKING_VFD
* 9	USER
10	ABB AC880
11	EMERSON EVC-1150B
12	SKF/MBC
13	KEB VFD
14	SKF/MBC - TANDEM
15	KEB VFD - TANDEM
16	ABB-ACH580
17	RHYMEBUS RM6F5
18	RHYMEBUS RM6G1
19	DELTA ME300
20-99	Reserved for Future Development

10's switch each number moves 10

1's switch each number moves 1



Program Type Switch 9 is reserved for 'USER' setup