



MCS-WIRELESS-MODEM-INT

Rev. 1.0 -
October 10, 2018 11:40 AM

5580 Enterprise Pkwy.
Fort Myers, FL 33905

Office: 239-694-0089
Fax: 239-694-0031

www.mcscontrols.com



MCS-WIRELESS-MODEM-INT

Sub User Installation

***MCS Total
Solution
for all your
Control
Needs***



***Energy Efficient and
RoHS Compliant***

Contractor (Sub User) Install

SIM Card Installation (NOT INCLUDED)

1. Open the SIM cover
2. Insert the Standard SIM into the SIM card slot.
3. When removing Standard Sim card, the user just presses Standard Sim card in the card slot again and the card will be ejected out.

Note : MCS-WIRELESS-MODEM-INT DX2100 does not support automatic SIM card hot-swapping and MCS-WIRELESS-MODEM-INT DX2100 must power off for SIM card to be recognized.

Wall Mount Installation

1. Find a suitable location.
2. Insert screws into the screw holes on the sides. Use a screwdriver to tighten the screws and secure the installation.
3. Connect and tighten the SMA antenna onto the device. For a better 3G signal strength, take the actual environmental condition into consideration when finding a mounting location for the device.

IMPORTANT: IF UNIT IS MOUNTED INSIDE AN ENCLOSURE, ANTENNA MUST BE MOUNTED OUTSIDE OF THE ENCLOSURE.

Note: Do not over-tighten the screws or the wall mount screw hole may be deformed.

Power Inputs

1. Plug the supplied power supply into the power port on the **MCS-WIRELESS-MODEM-INT DX2100**.
2. Connect power supply plug into power source.
3. After turning on the MCS-WIRELESS-MODEM-INT DX2100 will make a buzz and the Ready LED on the front panel will light.

1. Install the DIACom software on a computer which is running **MCS-CONNECT**.
2. The software is provided on a USB flash drive in your package. (The DIACom software can also be found at: <http://mcscontrols.com/communications.html#MCS-WIRELESS-MODEM-INT>)
3. Start the DIACom software
4. **LOGIN USING YOUR EMAIL ADDRESS**
5. **A SUB USER ACCOUNT WAS SETUP FOR YOU AND A PASSWORD WAS SENT TO THAT EMAIL ADDRESS.**



● Activate your account on DIACloud

Activate your account on DIACloud

● DIACloud <no-reply@diacLOUDSOLUTIONS.COM>

To **1234@gmail.com**

Dear User,

The administrator(mcs.cust.dx2100@gmail.com) has invited you to be his(her) sub user on DIACloud.

Below is your account info

Email Account: 1234@gmail.com

Your Password: **7WMNCm2R**

1. Next screen shows Secure Tunnel Account on left and what Bound Account is showing.

Status	Name	SN	Latency	IP Address	Operation
Online	DX2100_9FC9	DX21000216270059	-	192.168.18.198	

2. There are two different ways to perform the Secure Tunnel:

a. **DHCP** - Default, Obtain an IP address from Cloud automatically when Cloud DHCP function is available.

b. **Static** - Manually set the IP address, the IP should be in the same subnet with DX device

Note: If you enter an IP address that is used on your network a message will appear.

7. Using the DHCP default the following IP address has been assigned.

8. Next click **'Create Tunnel'** to establish the Secure Tunnel for the computer .

Below screen shows account is now bound to the MCS-MAGNUM at IP address as shown in photo. Note that the screen went from red **'Create Tunnel'** to blue **'Disconnect'**, also at bottom an IP address shows.

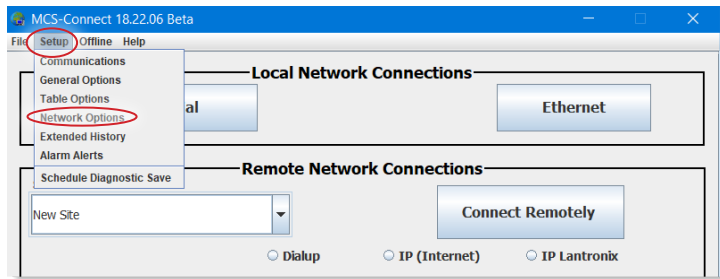
Status	Name	SN	Latency	IP Address	Operation
Online	DX2100_9FC9	DX21000216270059	-	192.168.18.198	

**DO NOT START MCS-CONNECT UNTIL YOU HAVE
CREATED THE SECURE TUNNEL**



9. Start MCS-CONNECT

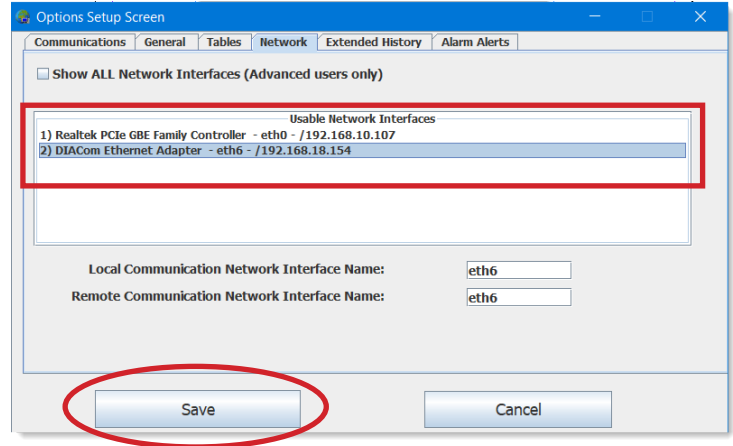
- Click on **'Setup'**
- Click on **'Network'**



10. Next screen shows network adapters available:

Example shows 2) DIACom Ethernet Adapter - eth6
- /192.168.16.154

- Click on **'2) DIACom Ethernet Adapter'** and click **'Save'**.



MCS-CONNECT - MAIN SCREEN

- Under **'Remote Network Connections'**, Click on **'IP'(Internet)**

- Under **Net. Interface**, click on **'eth6'**, which was the network adapter shown in the MCS-CONNECT network setup above.

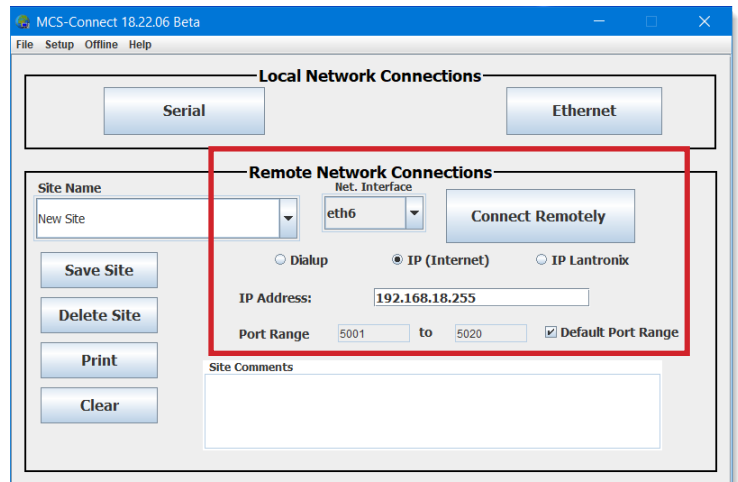
- In the **'IP Address'** add range of IP addresses you want MCS-CONNECT to search for. This will depend on what IP address your network system is using.

- Enter a **Port Range** to search in. (unclick Default).

- Enter a 'Site Name' and click 'Save Site'.

- Click 'Connect Remotely'

- MCS will search for connected Magnum(s)



Address	HW Serial #	Cfg Name	Company Name	Unit Model #	Unit Serial #	Installed Date	Cfg Vers.	Firmware V...	Cfg Date
192.168.18.101 (1)	020615	HAUNI MALAYSIA	DB MALAY...	DCLC450M		11/15/2...	17	HVAC 1...	01/22/2...
192.168.18.106 (85)	018365	CH1-1	NAPPS	CICB30	1667A-01	07/28/2...	17	HVAC 1...	04/04/2...