

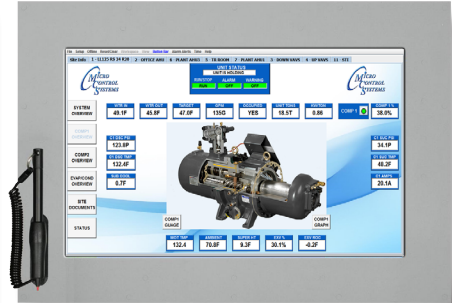
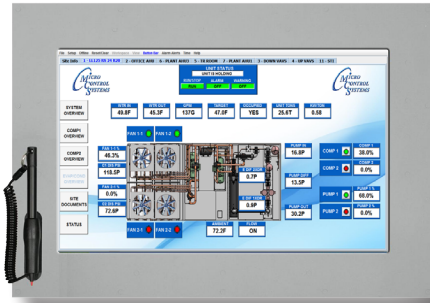
# MCS Training for . . . MCS-Graphics Builder

15.6" MONITOR  
PROVIDED  
Yours to keep

The class will be conducted in two parts  
using a  
Power Point Presentation for the

## MCS-GRAPHICS BUILDER

and hands on instructions for building  
graphics screens for MCS-CONNECT



## Presentation of The MCS Graphics Builder

- Introduction to MCS Graphics Builder
- Installing the MCS Graphics Builder Program
- Description of Images, Buttons, Gauges, Animated Images, Sensors, Set Points, Relay Outputs and Sensor Input Change Points, etc.

## On-Hands with the MCS Graphics Builder

### Outline of Class

#### Day 1

- MCS-Connect/Graphics Overview
- MCS-Graphics Builder Overview
- Lunch Break
- Adding Images in Graphics Builder
- Points to Display/Graphic Builder
- RO and SI Change Points
- Color Change Points
- Animated and Four Part Images
- Creating new Pages and Buttons
- CPM/Multiboard Addresses
- Graphs and Gauges

#### Day 2

- Creating Graphics for Training Class AHU
- Lunch
- MCS-TOUCH/Linux Connect Overview
- Loading Graphics on to MCS-TOUCH



Questions or comments? E-mail us at [klm@mcsccontrols.com](mailto:klm@mcsccontrols.com)

5580 Enterprise Parkway • Fort Myers, Florida 33905 • (239) 694-0089 • Fax: (239) 694-0031  
[www.MCScontrols.com](http://www.MCScontrols.com)



## Training Class Application Form

The class will be conducted using a Power Point Presentation for Installing and using

### The MCS-GRAPHICS BUILDER

and hands on instructions for building graphics for MCS-CONNECT

### Two day Training Sessions

**Wednesday, October 26 -Thursday, October 27, 2016**

**Class cost of \$950. covers the following:**

- Training using MCS-GRAPHICS BUILDER (MGB)
- Training using MCS-CONNECT with MGB
- 15.6" PC Monitor- yours to keep after training period
- Lunch provided
- Class limited to 6 students

**STUDENTS MUST HAVE A PC LAPTOP COMPUTER FOR THE CLASS**

#### Company Information

Company \_\_\_\_\_

Web Site \_\_\_\_\_ Phone \_\_\_\_\_ Fax \_\_\_\_\_

Full Address \_\_\_\_\_

Is the company already a MCS customer?  Yes  No

Name of the course promoter \_\_\_\_\_ Email \_\_\_\_\_

#### Participant's Information

Name \_\_\_\_\_ Email \_\_\_\_\_ Mobile \_\_\_\_\_

Position in the company \_\_\_\_\_

Basic knowledge of Windows operating system  Sufficient  Good  Excellent

Educational background \_\_\_\_\_

Knowledge of MCS products  Yes  No

Questions or comments? Email us at [klm@mcscontrols.com](mailto:klm@mcscontrols.com) or call 239-694-0089

**You must register to receive a confirmation**

**IMPORTANT: sending this form does not mean automatic admission to the course.**