

MCS-EXV-DRIVER INSTALLATION GUIDE

IF THIS IS A NEW INSTALLATION, JUMP TO THE SECTION ON WIRING YOUR MCS-EXV-DRIVER.

IF YOU ARE REPLACING AN MCS-EXV DRIVER FOLLOW THE STEPS FOR REMOVING THE OLD DRIVER BELOW.



Please read the following safety precautions and warnings prior to installing your device.

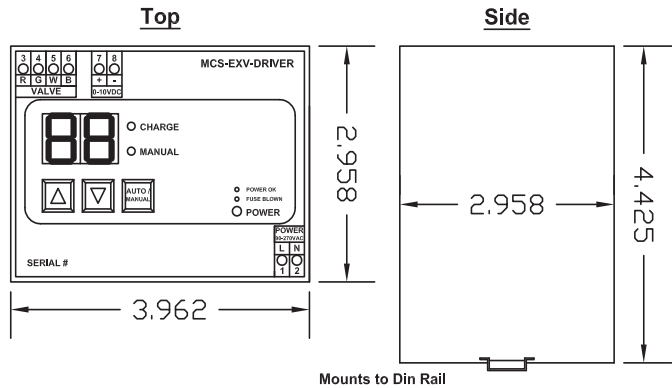
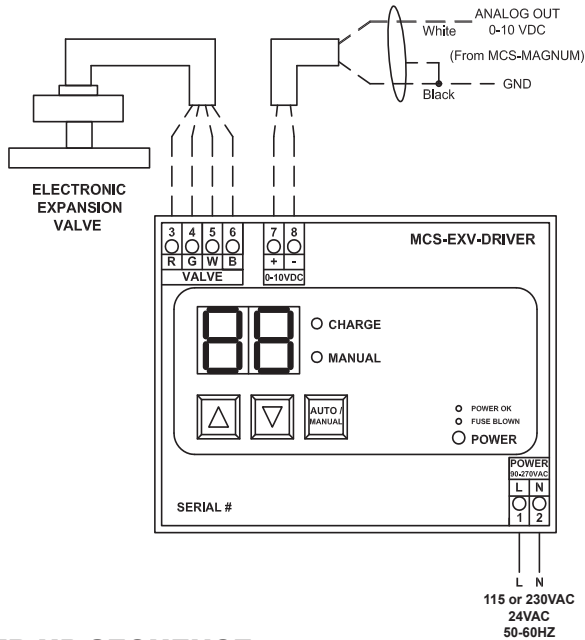
SHUT DOWN CHILLER BEFORE ATTEMPTING THIS INSTALLATION

Check that the supply voltage on the MCS-EXV-DRIVER is correct for your installation.

STEPS TO FOLLOW IF REPLACING MCS-EXV DRIVER

1. Disconnect the electrical power, the command signal and the Electronic Expansion Valve from the driver.
2. Remove the existing EXV Driver and verify the new driver voltage (115 / 24V) matches the installed voltage.
3. Install new EXV Driver and wire the electrical power, the command signal and Electronic Expansion Valve to the new EXV Driver.

WIRING MCS-EXV-DRIVER



POWER UP SEQUENCE:

- Power okay-LED lights up
- Charge light blinks GREEN
- When fully charged the MCS-EXV DRIVER GREEN Light will be solid.
- The driver will go thru the power up sequence.
- Valve is over driven CLOSED.

MCS-EXV-DRIVER'S TERMINAL#	ALCO EX	SPORLAN SEI-SER-SEH	DANFOSS ETS	CAREL
Refer to the manufacturer's datasheet of the valve for verification of wiring				
3	BLACK	RED	RED	GREEN
4	WHITE	GREEN	GREEN	BROWN
5	BROWN	WHITE	WHITE	WHITE
6	BLUE	BLACK	BLACK	YELLOW



**VERIFY THE VALVE TYPE PRIOR TO STARTING THE CHILLER
SEE REVERSE SIDE**

CHECKING THE VALVE TYPE - (CHANGE IF NECESSARY)

When in Auto mode press both the UP and DOWN and AUTO/MANUAL keys simultaneously this will display the valve type.

CHANGING THE VALVE TYPE IF NECESSARY

1. Pressing both the UP and DOWN keys simultaneously for 5 seconds shows the 'ES'
2. Release and then Press the UP and DOWN keys simultaneously again to see the 'PS' (password)
3. Use the UP or DOWN key to enter the password '47'
4. Press the UP and DOWN key simultaneously to accept the password entered
5. Next use the UP or DOWN keys to navigate to the EXV VALVE TYPE

VALVE TYPE IDENTIFIER - (Firmware Version 7.0)

Valve Code	# of Steps	EXV TYPE
A1	750	Alco EX4-EX5-EX6
A2	1660	Alco EX7
A3	2600	Alco EX8
A4	2040	Alco Trane 200 Tons
CL	500	CAREL E2V, E3V, E4V, E5V, E6V, E7V
D1	2625	Danfoss ETS-12/25/50
D2	3530	Danfoss ETS-100
D3	3810	Danfoss ETS-250/400
S1	1596	Sporlan SEI 0.5 to 11
S2	1596	Sporlan SER 1.5-20 (AA,A,B,C,D,E)
S3	3193	Sporlan SEI 30; SDR -3, SDR-3x
S4	2500	Sporlan SER-AA-A, B,C,D Sporlan SERI-F,G,J,K,L CDS -2, -4, -7
S5	6386	Sporlan SEI-50, SEH (I)-100, -175, -400; CDS -9, -16, -17; SDR -4
T1	1596	Sporlan SEI 0.5 to 11- two valves wired to one MCS-EXV-DRIVER
T2	1596	Sporlan SER 1.5-20 (AA,A,B,C,D,E)- two valves wired to one MCS-EXV-DRIVER
T3	3193	Sporlan SEI 30; SDR -3, SDR-3x- two valves wired to one MCS-EXV-DRIVER
T4	2500	Sporlan SER-AA-A, B,C,D Sporlan SERI-F,G,J,K,L CDS -2, -4, -7 - two valves wired to one MCS-EXV-DRIVER
T5	6386	Sporan SEI-50, SEH (I)-100, -175, -400; CDS -9, -16, -17,; SDR -4 - two valves wired to one MCS-EXV-DRIVER

For Replacing your Driver, once your new installation is complete, replace the old MCS-EXV DRIVER in the box that the new driver came in, apply return label and ship back to MCS

COMPLETE INSTRUCTION ON THE MCS-EXV-DRIVER CAN BE FOUND AT:

www.mcscontrols.com/manuals.html



5580 Enterprise Pkwy. Fort Myers, FL 33905
Office: (239) 694-0089 • Fax: (239) 694-0031
www.mcscontrols.com