



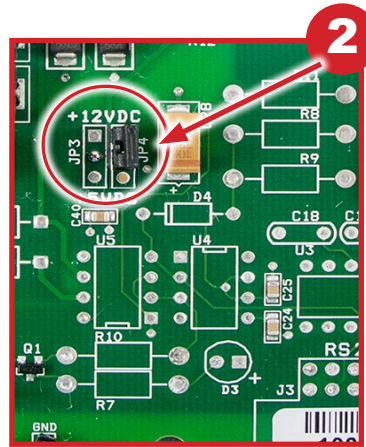
# MAG-KEYPAD-REPLACEMENT

**THE MAG-KEYPAD-REPLACEMENT IS A DIRECT REPLACEMENT FOR OLDER MAG KEYPADS**

**Mag-Keypad-Replacement REV 11.4R and greater  
jumper at J4 set to +12VDC  
when shipped from factory**

*Any MCS-Magnum HW REV 7.0 or greater or HW REV 5.5 (these will have Mag-Keypad interface rev 7.0 or greater) needs the jumper on Mag-Keypad-Replacement set to +12 VDC as shown below (default from factory).*

**FIGURE 1**  
MAGNUM  
HW REV #



**FIGURE 2**  
MAG-KEYPAD-REPLACEMENT

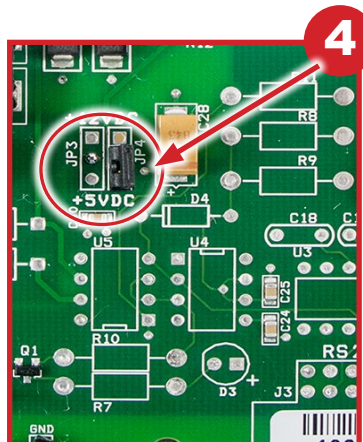
(J4 Pins populated for +12 VDC.  
top two pins covered  
(Magnum HW REV 7 or higher, )



## **INSTRUCTIONS FOR USING THE MAG-KEYPAD-REPLACEMENT REV 11.4R AND ABOVE WITH OLDER MAGNUMS**

*Any MCS-Magnum less than HW REV 7.0, excluding HW REV 5.5 (These will have a Mag-Keypad interface less than REV 7.0) needs to have the jumper set for +5 VDC as shown below.*

**FIGURE 3**  
MAGNUM  
HW REV #



**FIGURE 4**  
MAG-KEYPAD-REPLACEMENT

(J4 Pins populated for +5 VDC,  
top pin not covered  
(Magnum HW less than Rev 7)  
Excluding HW REV 5.5

**SEE REVERSE SIDE FOR INSTALLING MCS-KEYPAD-REPLACEMENT**



# MAG-KEYPAD-REPLACEMENT

THE MAG-KEYPAD-REPLACEMENT IS A DIRECT REPLACEMENT FOR OLDER MAG KEYPADS



**MAG-KEYPAD-REPLACEMENT WORKS WITH ANY MCS-MAGNUM FIRMWARE**



NOTE: MAG-KEYPAD- REPLACEMENT is shipped assembled, except for Keypad cable.

Tools needed for removal:

- 5/16" Nut Driver



FRONT



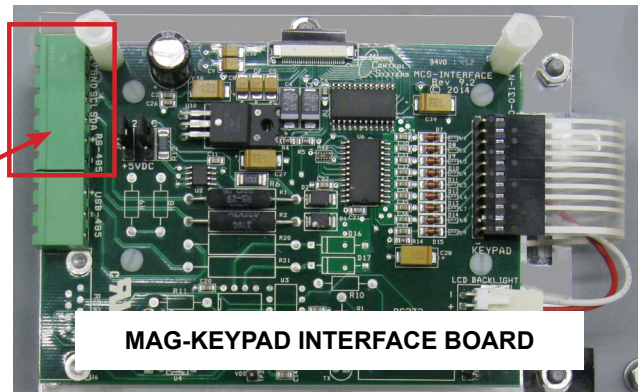
BACK



KEYPAD CABLE to MCS-MAGNUM

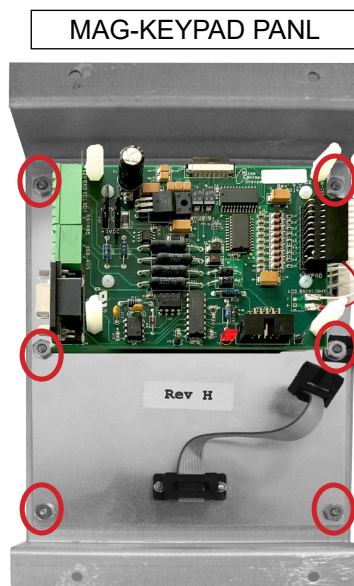
## REPLACEMENT OF OLD KEYPAD

- 1 STOP THE UNIT (RUN/STOP SWITCH TO OFF POSITION)
- 2 TURN POWER OFF TO THE UNIT
- 3 UNPLUG CABLE FROM MCS-MAGNUM AND FROM OLD KEYPAD.



MAG-KEYPAD INTERFACE BOARD

## Removal of Old MAG-KEYPAD

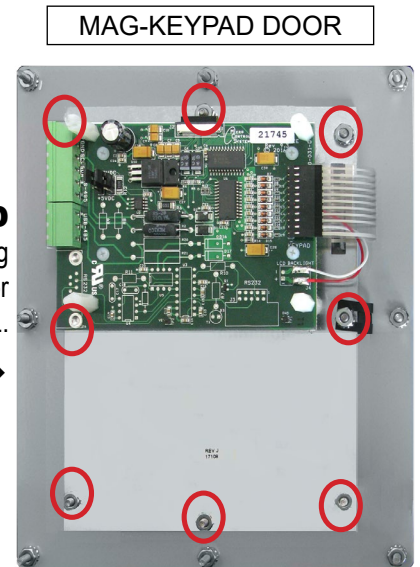


MAG-KEYPAD PANL

### REV H KEYPAD

Remove 6 nuts from old Keypad MAG-DOOR or MAG-KEYPAD-PANL. Unplug the RS232 if installed.

BE SURE TO GROUND NEW KEYPAD-Attach nut and washer



MAG-KEYPAD DOOR

### REV J KEYPAD

Remove 8 nuts holding old Keypad from MAG-DOOR or MAG-KEYPAD-PANL.

- 4 INSTALL MAG-KEYPAD-REPLACEMENT IN SAME BRACKET BE SURE TO GROUND NEW MAG-KEYPAD-REPLACEMENT