

MCS-COMPACT (Installation Manual)

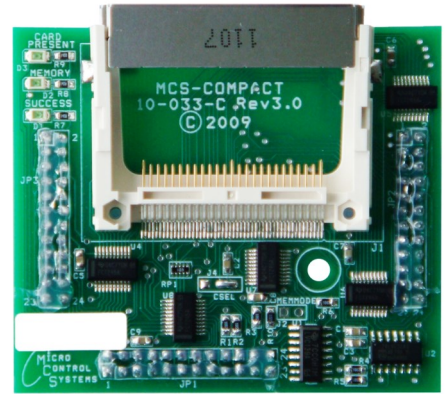
Product List:

- MCS-COMPACT (1)
- FLASH-2G (2)
- Compact Flash Card Reader (3)
- USB Cable (4)
- MAGNUM-N (5)

Directions:

1. Remove the plastic nut from the MAGNUM-N board where the MCS-COMPACT is meant to be placed.
2. Insert the MCS-COMPACT into the aforementioned area. Make sure all three ports are fully connected to the MAGNUM-N board.
3. Slide the FLASH-2G into the port of the MCS-COMPACT. (NOTE: Do not set the sample rate below 2 seconds when using the compact flash adapter (FLASH-2G). Doing so may cause watchdog reset.)
4. Remove the FLASH-2G from the MCS-COMPACT and insert it into the Compact Flash Card Reader.
5. Plug the Card Reader into the larger end of the USB cable and the smaller end of the USB cable into the port of the computer, thereby connecting the FLASH-2G to the computer.

1



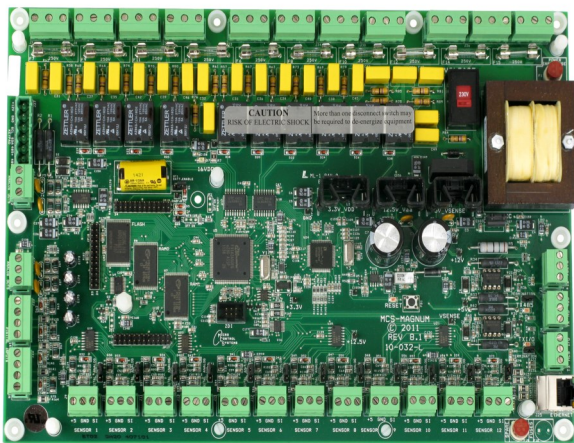
2



3



5



4



5580 Enterprise Parkway, Fort Myers, FL 33905

Office: 239-694-0089 Fax: 239-694-0031

www.mcscontrols.com