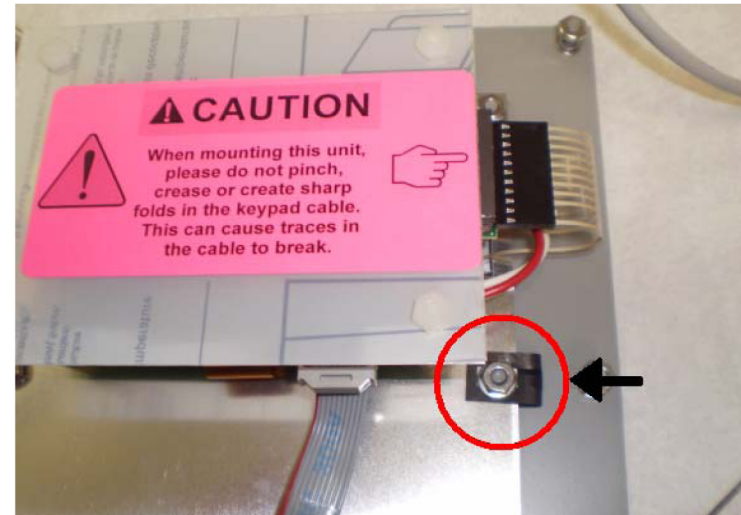
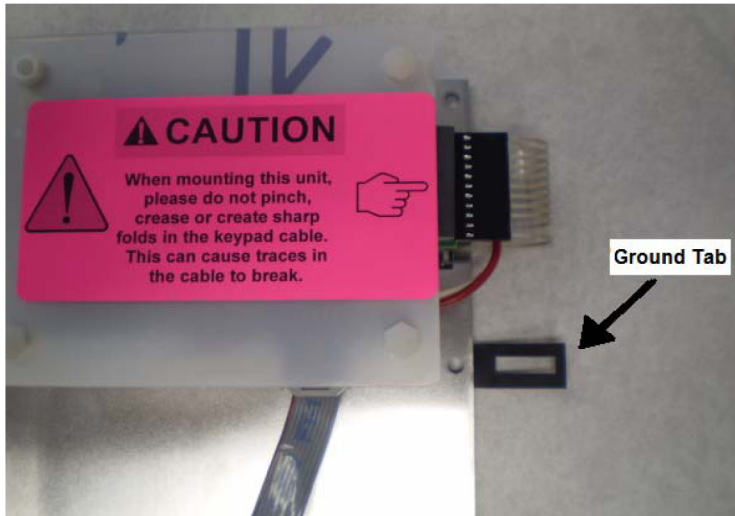


MAG-KEYPAD-OEM

KEYPAD / LCD Interface for MCS-MAGNUM

Mounting Instructions

The MAG-KEYPAD-OEM has a black ground tab that must be fastened properly in order to insure a proper ground. You will find the Ground Tab to the right of the Keypad when looking at it from behind.



When mounting the MAG-KEYPAD, fold over the black ground tab on the right side of the Keypad, and place the washer over the black tab. Fasten the nut on the Keypad.