



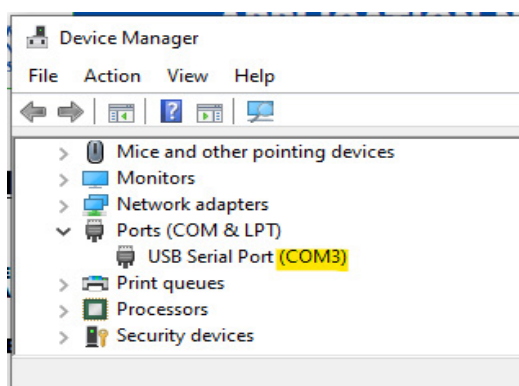
APP#163

MCS-NitroMag

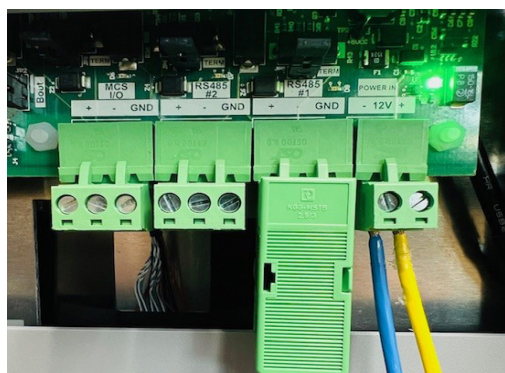
Loading Firmware via MCS-USB-RS485 cable

Caution: To communicate with the MCS-Connect software, the MCS-NitroMag Board Protocol on any available RS485 port must be set to MCS.

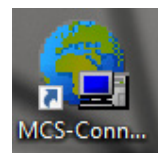
Step 1: Connect USB side of the **MCS-USB-RS485** cable to the PC or laptop. After the connection is established, verify that the USB serial port has been properly recognized by the system. This can be confirmed by checking the assigned **COM port number** in **Device Manager**, as shown in the image below for reference.



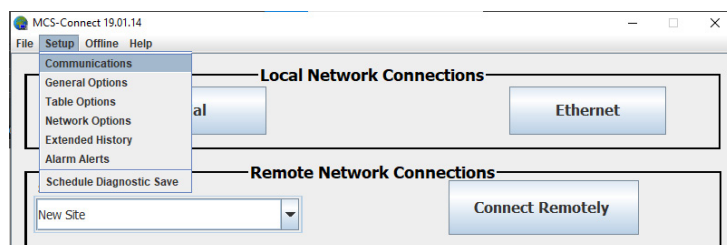
Step 2: Connect the **RS485** connector of the **MCS-USB-RS485** cable to any available **RS485 female port** on the MCS-NitroMag board. RS485 #1 is shown as a reference in the image below.



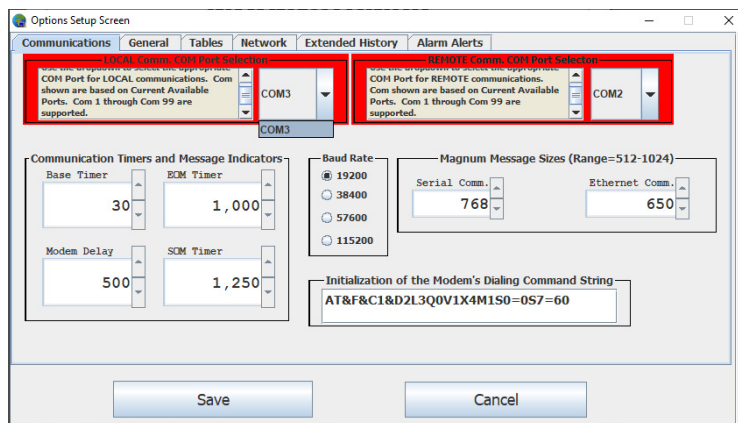
Step 3: Open **MCS-Connect** Software on your PC or Laptop desktop.



Once the MCS-Connect main window is displayed, locate '**Setup**' in the upper-left corner. From the dropdown menu, click '**Communications**'.



The **Communication Options** setup window will appear. Select the desired **COM port** by navigating to '**Local Comm**' → '**COM Port Selection**' window. See the image below for reference. Once COM is selected click Save.



Any questions regarding this release, contact: support@mcscontrols.com

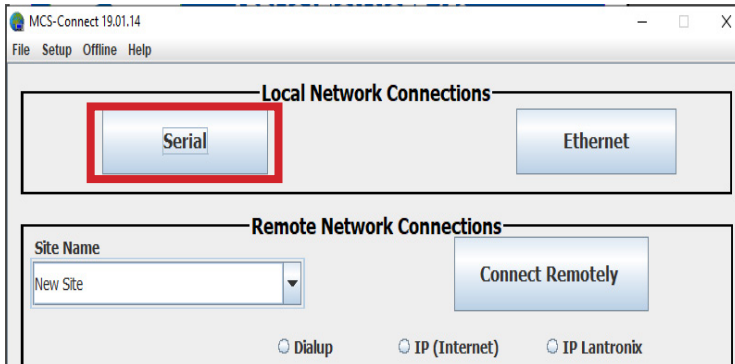
Information contained in this document has been prepared by Micro Control Systems, Inc. and is copyright © protected 2025. Copying or distributing this document is prohibited unless expressly approved by MCS.

Release - 2026-02-05



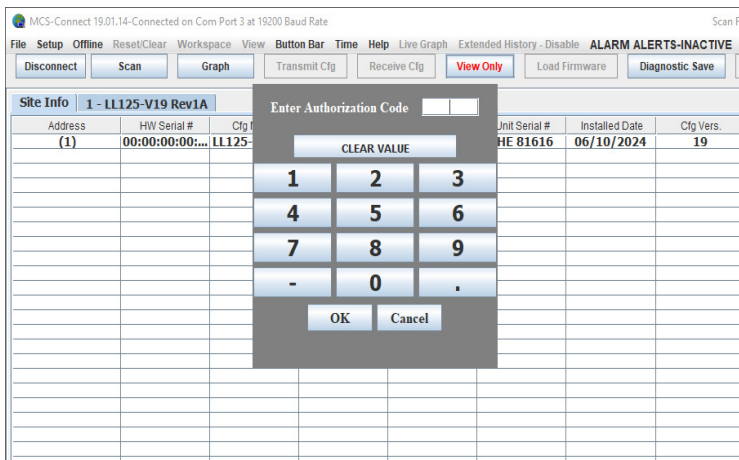
APPLICATION NOTE-163

Step 4: Click the 'Serial' button on the MCS-Connect main window to establish a connection with the MCS-NitroMag Controller.



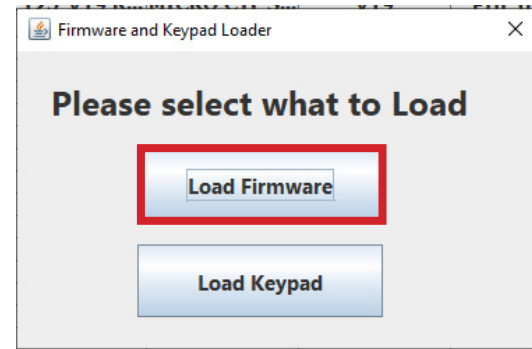
Step 5: Enter Authorization

Once connected, click the 'View Only' button. Enter the authorization code when prompted. This will grant access to the unit, allowing you to make changes and load new firmware.



Step 6: Load Firmware

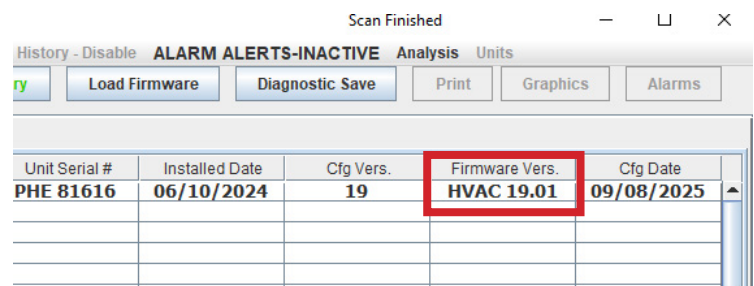
Follow the on-screen instructions to select and upload the new firmware to the MCS-NitroMag board.



Wait for the process to complete before disconnecting.

Step 7: Verify Update

After firmware loading is complete, verify the firmware version in MCS-Connect to ensure the update was successful.



Any questions regarding this release, contact: support@mcscontrols.com

Information contained in this document has been prepared by Micro Control Systems, Inc. and is copyright © protected 2025. Copying or distributing this document is prohibited unless expressly approved by MCS.

Release - 2026-02-05