



APPLICATION NOTE

APP #162

MCS-NitroMag-Keypad **WiFi** **Configuration Instructions**

MCS-NitroMag-Door



MCS-NitroMag-Oem



MCS-NitroMag-Keypad Panel



MCS-NitroMag-Door-Nema4



Step1. Authorize Access to the Unit

1. Press Menu Button, use the keypad arrow keys, navigate to Password.
2. Press Enter.



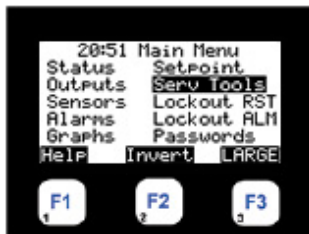
3. Enter the Nitromags four-digit authorization code corresponding to your access level.



4. Press Enter to confirm. Successful authorization allows configuration changes.

Step2. Access Service Tools

5. Using the Up/Down arrow keys, navigate to Service Tools.



6. Press Enter to access the menu.
7. Scroll using the Up/Down arrow keys until Wi-Fi Network is displayed.



8. Press Enter to access the Wi-Fi settings.
 - Within this section, you can:
 - *View the current SSID
 - *View the current Password
 - *Modify the Nitromags Wi-Fi configuration

Step3. Modify SSID and Password

9. Use the Up/Down arrow keys to highlight either the SSID or Password.
10. Press Enter.

*The display will switch to Modify Mode.



Step4. Edit the SSID and Password

*Use the Left/Right arrow keys to move between characters.

*Use the Up/Down arrow keys to change the selected character.

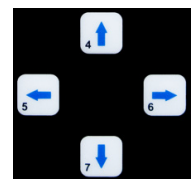
11. Change Character Type

- Press **F2** to toggle between:

*Uppercase letters (**A–Z**)

*Lowercase letters (**a–z**)

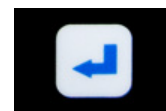
*Numeric characters (**0–9**)



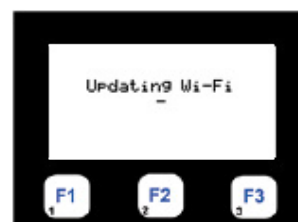
12. Delete a Character

- * Press **F3** to delete the selected Character.

13. After completing modifications, press Enter **Key** to return to Wi-Fi Setup window.



14. Summit changes by pressing the **F3** key.
15. After submitting the WiFi update, two display images will appear.



**Please proceed to Step5
on next page**

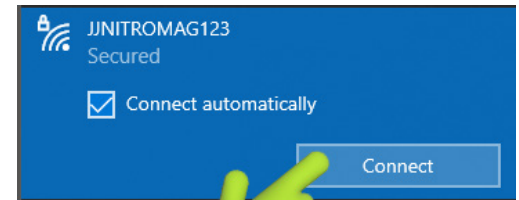
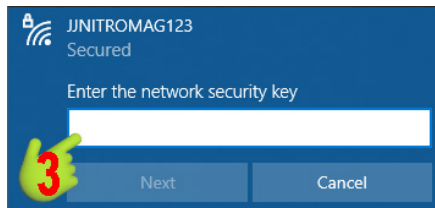
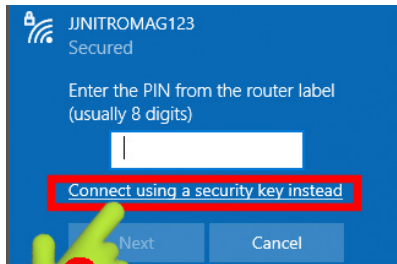
Step5. Connect to the Nitromags Wi-Fi

Ensure MCS-CONNECT is closed before changing your laptop's Wi-Fi connection.

16. On your laptop, open the list of available wireless networks.

17. Locate and click on the Nitromags Wi-Fi network (SSID).

18. In the password entry window, click **"Connect using a security key instead."**



19. Enter the Wi-Fi password configured for the MCS-NITROMAG-KEYPAD.

20. Click **Next** to Connect.

21. Wait a few seconds to confirm the Wi-Fi connection status displays **"Secured."**

Step6. Configure MCS-CONNECT Network Settings

After your laptop is connected to the Nitromags Wi-Fi, MCS-CONNECT must be set to use the same network in order to detect the MCS-NITROMAG-KEYPAD via Wi-Fi.

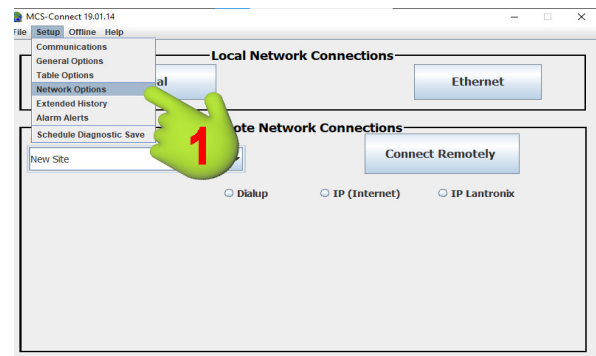
22. Open MCS-CONNECT on your laptop.

23. Once the main window opens,

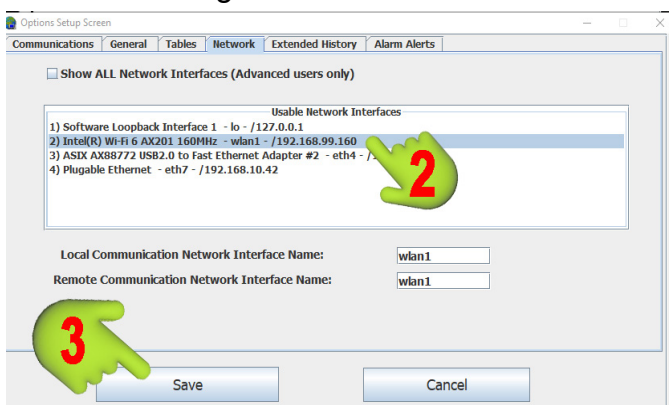
locate **Setup** in the upper-left corner.

24. Click Setup to display the drop-down menu.

25. Select **Network Options**.



26. In the Usable Network Interface field, locate and select the Nitromags Wi-Fi network.



27. Click Save to apply the settings.

28. Click Ethernet to find the Nitromags.



Troubleshooting – Wi-Fi Connectivity

MCS-NITROMAG-KEYPAD

If the Nitromags Wi-Fi network does not appear or the laptop cannot establish a connection, perform the following steps in order:

Verify Wi-Fi Configuration

1. Access the Wi-Fi Setup menu.
2. Confirm:
 - *The SSID is correctly entered.
 - *The Password is correctly entered.
3. Ensure all changes were properly saved.
4. If necessary, re-enter the SSID and password and save again.

Place Unit in STOP Mode

5. Place the Run/Stop switch into STOP to cycle off the equipment. The Nitromag will begin the shutdown sequence which may take several minutes.
6. After Stopping the unit, verify all compressors, pumps, fans and any other devices you may have are shut down prior to continuing to the next step.

Perform Power Reset

7. Once the unit has completely cycled off and no longer running.
power OFF the MCS-NITROMAG-KEYPAD.
8. Wait approximately 10–15 seconds.
9. Power the unit ON.
10. Allow the unit to complete its full boot sequence before attempting reconnection.
Do not attempt to connect during the boot process.

Reattempt Wi-Fi Connection

11. On the laptop, open the Wi-Fi network list.
12. Search for the configured SSID.
13. Select the network.
14. Enter the correct password.
15. Attempt connection.

Restart MCS-CONNECT (If Required)

If the Wi-Fi network is visible but MCS-CONNECT does not detect the unit:

16. Close the program completely.
 - *Verify it is not running in the background.
17. Reopen MCS-CONNECT.
18. Scan for available devices again.

Any questions regarding this release, contact: support@mcscontrols.com

Micro Control Systems, Inc. 5580 Enterprise Parkway Fort Myers, Florida 33905

(239)694-0089 FAX: (239)694-0031 www.mcscontrols.com

Information contained in this document has been prepared by Micro Control Systems, Inc. and is copyright © protected 2017.

Copying or distributing this document is prohibited unless expressly approved by MCS.