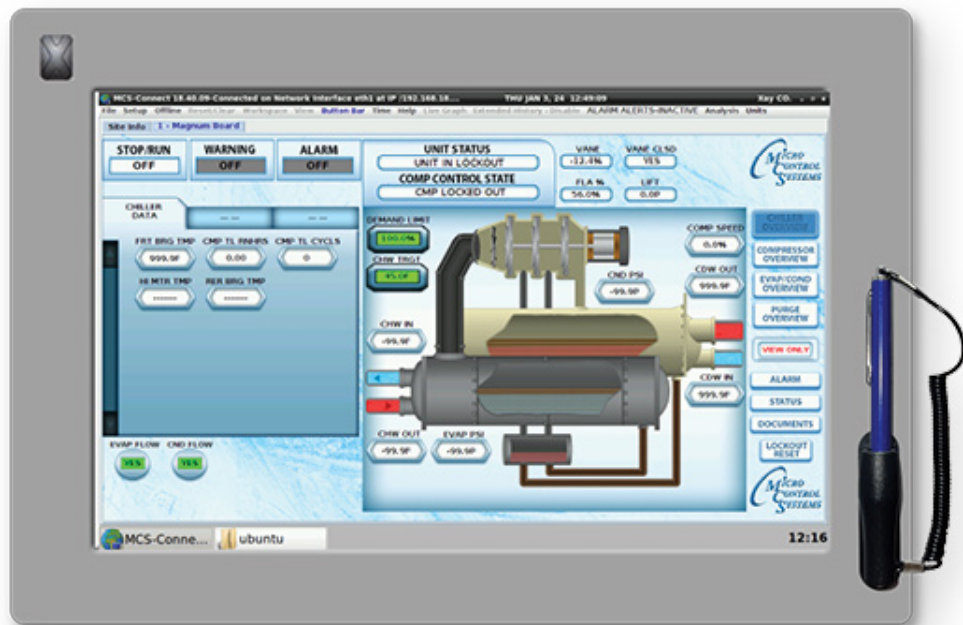




# APPLICATION NOTE

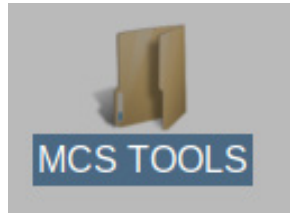
## APP #161

# MCS-NITROMAG-15.4 WiFi Setup



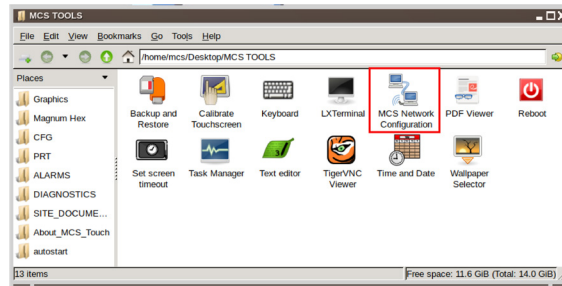
## Step1. Access MCS Network Configuration

1. On the desktop, locate the MCS TOOLS folder.



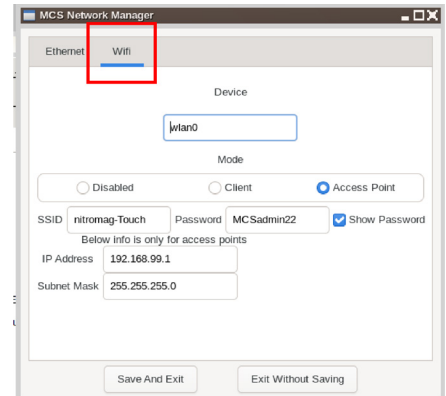
2. Double-click to open the folder.
3. On the right side of the window, locate MCS Network Configuration.

4. Double-click to open it.



## Step2. Configure Wi-Fi Settings

5. Inside the MCS Network Manager, click on Wi-Fi.
6. Configure the unit's Wi-Fi settings as required, or verify the current SSID and password.
7. If changes are made to the Wi-Fi SSID or password, click Save and Exit.

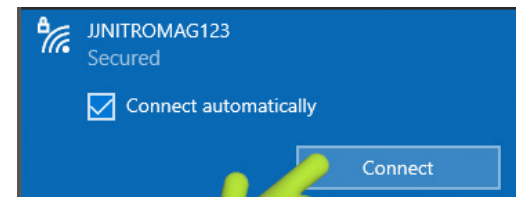
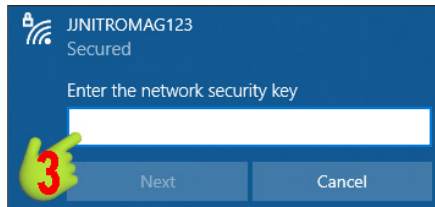
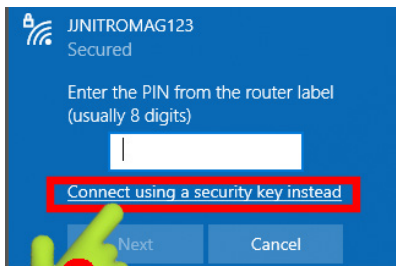


**Please wait a few seconds for the Unit Wi-Fi to apply the changes and become available.**

## Step3. Connect to the Unit Wi-Fi

Ensure MCS-CONNECT is closed before changing your laptop's Wi-Fi connection.

8. On your laptop, open the list of available wireless networks.
9. Locate and click on the unit's Wi-Fi network (SSID).
10. In the password entry window, click **"Connect using a security key instead."**

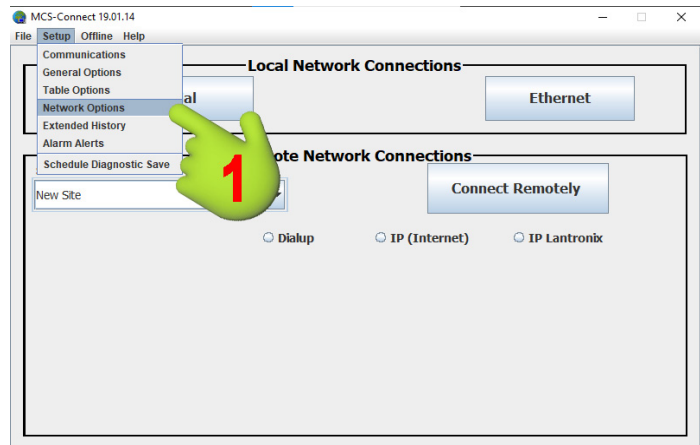


11. Enter the Wi-Fi password configured for the MCS-NITROMAG-15.4.
12. Click **Next** to Connect.
13. Wait a few seconds to confirm the Wi-Fi connection status displays **"Secured."**

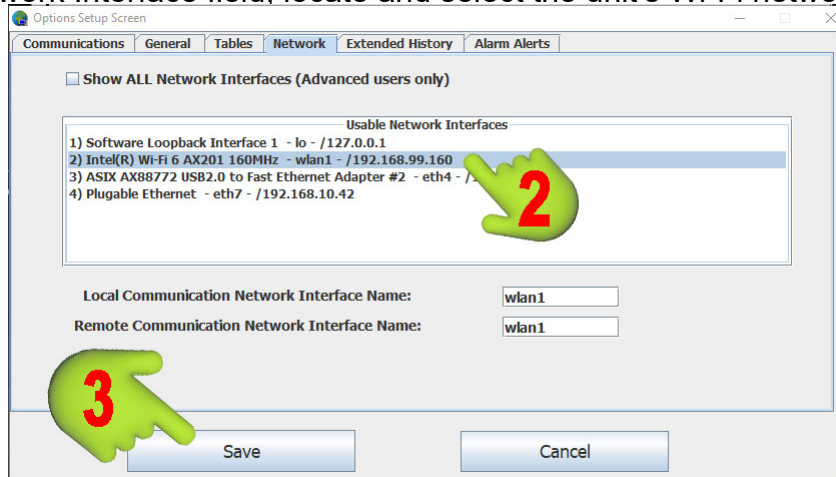
## Step4. Configure MCS-CONNECT Network Settings

After your laptop is connected to the unit's Wi-Fi, MCS-CONNECT must be set to use the same network in order to detect the MCS-NITROMAG-15.4 via Wi-Fi.

14. Open MCS-CONNECT on your laptop.
15. Once the main window opens, locate **Setup** in the upper-left corner.
16. Click Setup to display the drop-down menu.
17. Select **Network Options**.



18. In the Usable Network Interface field, locate and select the unit's Wi-Fi network.



19. Click Save to apply the settings.
20. Click Ethernet to find the unit.



## Troubleshooting

If the unit's Wi-Fi does not appear or the laptop cannot connect:

1. Confirm the Wi-Fi settings were saved in the MCS Network Manager.
2. Ensure the unit is not currently in commissioning mode. Stop commissioning if necessary.
3. Perform a power reset on the MCS-NITROMAG-15.4.
4. Allow the unit to fully reboot.
5. Search again for the Wi-Fi network from your laptop.
6. If MCS-CONNECT does not detect the unit, close the program completely and reopen it.

Any questions regarding this release, contact: [support@mcscontrols.com](mailto:support@mcscontrols.com)

Micro Control Systems, Inc. 5580 Enterprise Parkway Fort Myers, Florida 33905

(239)694-0089 FAX: (239)694-0031 [www.mcscontrols.com](http://www.mcscontrols.com)

Information contained in this document has been prepared by Micro Control Systems, Inc. and is copyright © protected 2017.

Copying or distributing this document is prohibited unless expressly approved by MCS.