



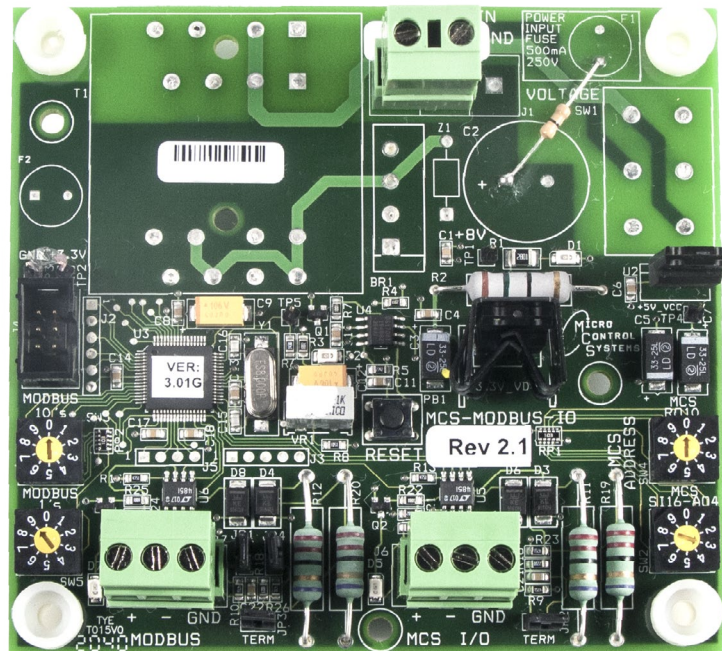
APPLICATION NOTE

APP #149

Revision History

Date	Author	Description
02-12~17-2021	DEW	Setup new APP

MODBUS I/O BOARD TRANSMIT/RECEIVE A CFG



Any questions regarding this release, contact: support@mcscontrols.com

Micro Control Systems, Inc. 5580 Enterprise Parkway Fort Myers, Florida 33905
(239)694-0089 FAX: (239)694-0031 www.mcscontrols.com

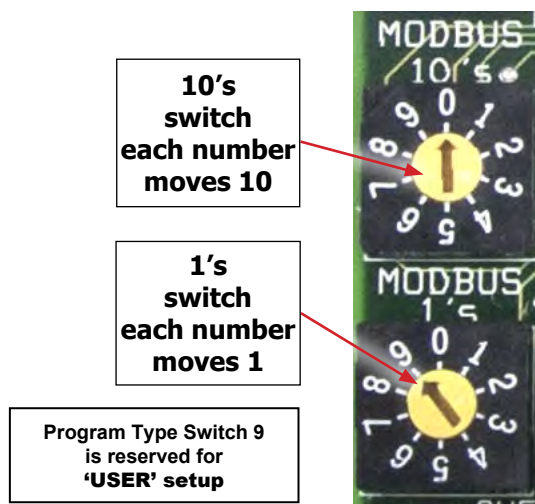
Information contained in this document has been prepared by Micro Control Systems, Inc. and is copyright © protected 2021.
Copying or distributing this document is prohibited unless expressly approved by MCS.

Transmitting a new Config File to the MODBUS I/O Board

1. Consult with factory for obtaining the latest MCS-CONFIG file for your MCS-MODBUS I/O Board.
2. Download the file sent to you from the factory to a location on your PC hard drive.
3. **BEFORE POWERING UP THE MODBUS BOARD, SET THE PROGRAM TYPE SELECTOR SWITCH TO "9" (USER).**

PROGRAM SELECT CHART

PROGRAM SELECT	CONFIGURATION NAME
0	YASKAWA VFD A1000-HARDWIRED / MODBUS
1	TURBOCOR CMP
2	Reserved for future
3	DANFOSS VLT DRIVE
4	BITZER Compressor
5	DANFOSS CDS 303 DRIVE
6	EMERSON_CSD-100
7	MCS-POWERMETER 3037
8	RUKING_VFD
* 9	USER
10	ABB AC880
11	EMERSON EVC-1150B
12	SKF/MBC
13	KEB VFD
14	SKF/MBC - TANDEM
15	KEB VFD - TANDEM
16-99	Reserved for future



4. Connect a MCS-USB-RS485 cable from your PC to the MCS I/O port on the MCS-MODBUS Board.
5. Click on MCS-CONNECT to start the program.
6. Click on setup, communications, and change the baud rate to 38400.
7. Click on the found MODBUS I/O board. Click on the view button and you will be prompted for a password, just click OK (You do not have to be authorized to make this change)
8. Click 'TRANSMIT CFG' button.
9. Select the new 'CONFIG' file you just downloaded on your PC and begin transmitting to the controller.
10. When the Transmit is complete, disconnect from the MODBUS I/O Board and re-connect the MODBUS I/O Board to the MAGNUM communications and the MODBUS device.

Receiving a Config File from the MODBUS I/O Board

1. Connect a MCS-USB-RS485 cable from your PC to the MCS I/O port on the MCS-MODBUS.
2. Click on MCS-CONNECT to start the program.
3. Click on setup, communications, and change the baud rate to 38400.
4. Click on the found MCS I/O board to "RECEIVE" the config file.
5. Click the 'RECEIVE CFG' button.
6. You are presented with a screen for naming the file and saving to a directory on your PC hard drive.