



APPLICATION NOTE

APP #137

Revision History

Date	Author	Description
10-01-2019	DEW	Setup

Setting Time & Date MCS-TOUCHSCREEN

Any questions regarding this release, contact: support@mcscontrols.com

Micro Control Systems, Inc. 5580 Enterprise Parkway Fort Myers, Florida 33905
(239)694-0089 FAX: (239)694-0031 www.mcscontrols.com

Information contained in this document has been prepared by Micro Control Systems, Inc. and is copyright © protected 2019.
Copying or distributing this document is prohibited unless expressly approved by MCS.

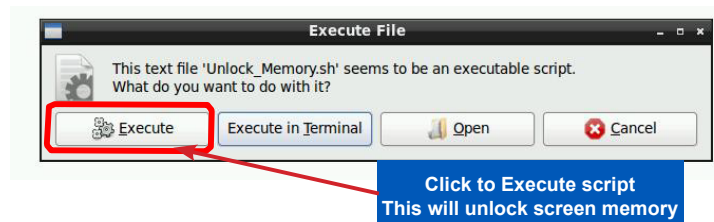
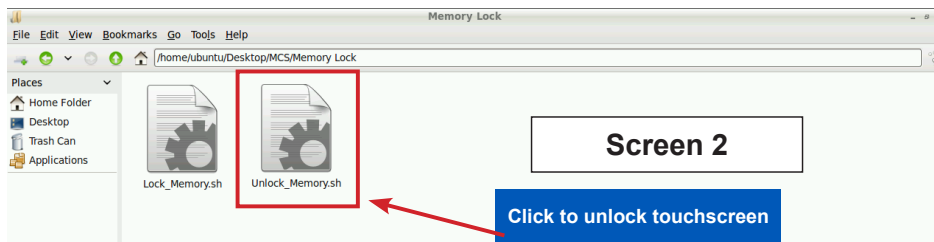
Unlocking MCS-TOUCHSCREEN

1.1. Start by Unlocking the Touchscreen.

1. Click on the 'MCS TOOLS' folder on the desktop, 'Memory Lock' sub folder will appear when this file is opened..



2. Double click on the 'Memory Lock' folder
3. Double click on the 'Unlock_Memory.sh' icon
4. Next screen, click on 'Execute'
5. Touchscreen will perform a restart



1.2. Open 'On Screen Keypad'

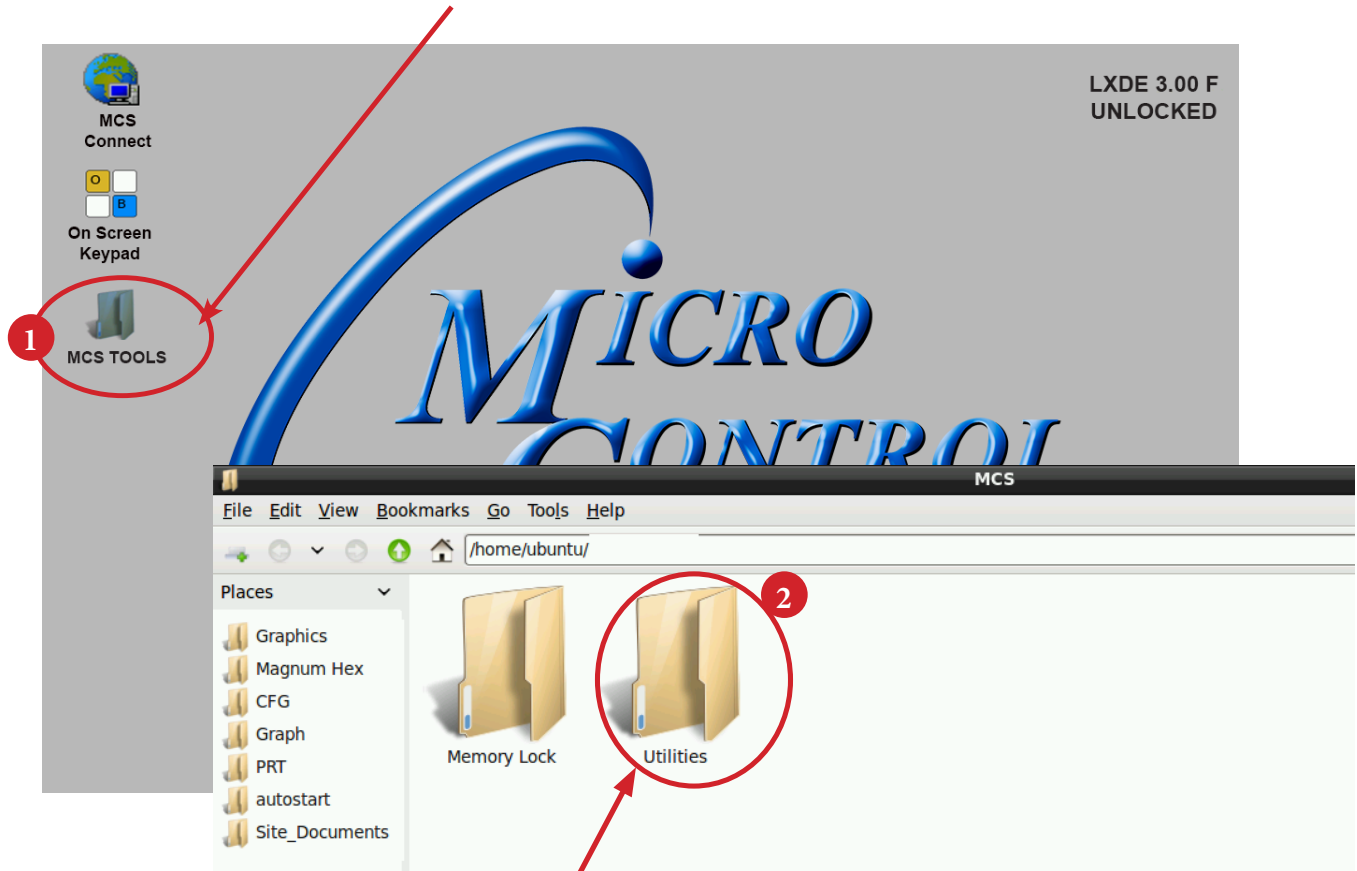
1. Navigate to the 'On Screen Keypad' on your desktop as shown below.
Click with stylus or touch to open.



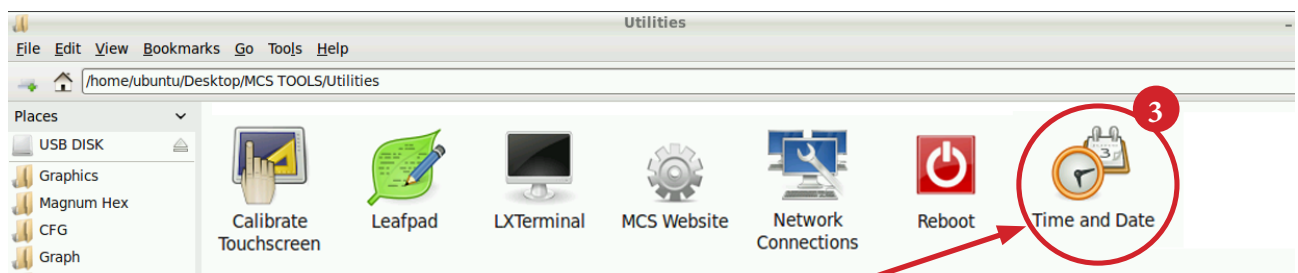
Setting Time and Date - MCS-TOUCHSCREEN

1. Navigate to the **'MCS TOOLS'** folder on your desktop.

Double click on folder to open.



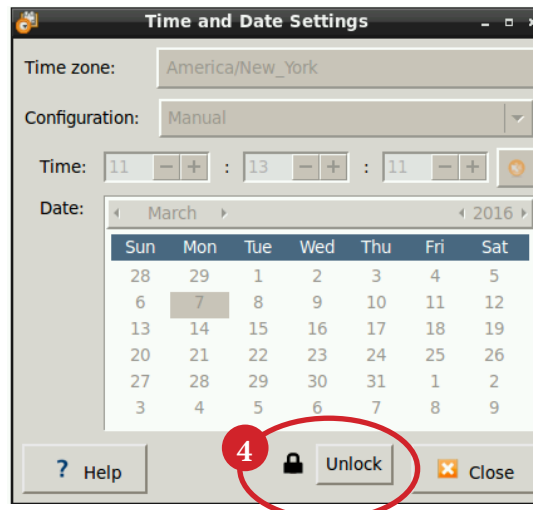
2. Double click on the **'Utilities'** sub folder to view contents.



3. Double Click **'Time And Date'** to make changes

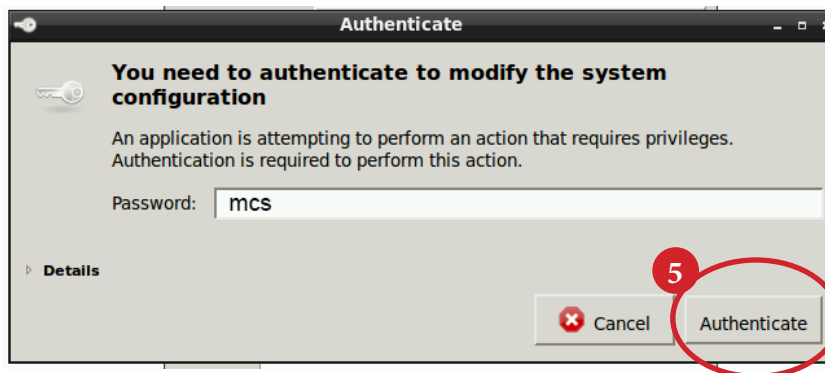
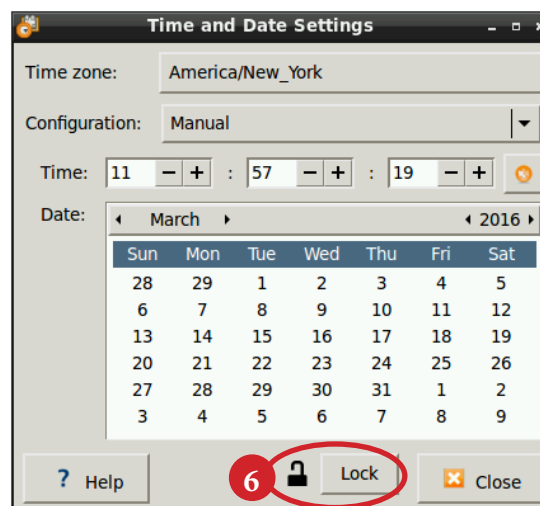
4. Screen opens- click on **'Unlock'**

You must be authorized to make these changes.



5. Using the keypad, enter password "mcs" (lower case)

Click **'Authenticate'** to unlock

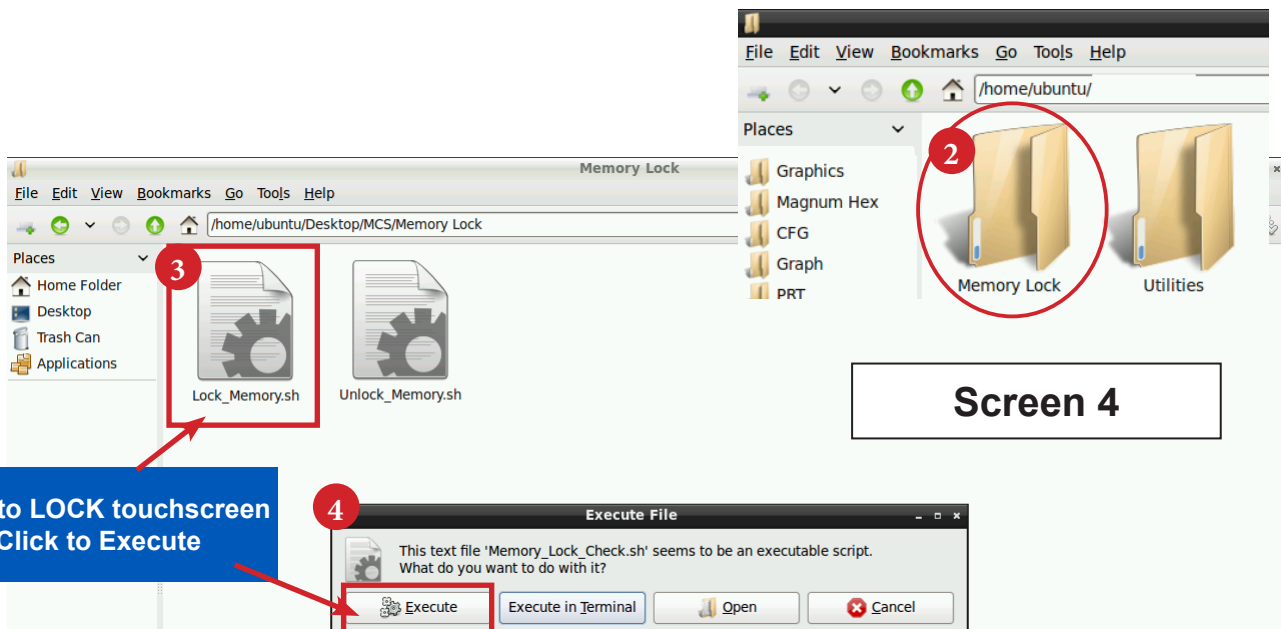
6. Make changes to date or time and click to **'Lock'**.

Locking MCS-TOUCHSCREEN

1.3. Locking Touchscreen



1. Double click the '**MCS TOOLS**' Icon on the Desktop.
2. Double click '**Memory Lock**' sub directory.
3. Double click '**Lock_Memory.sh**'.
4. Click '**Execute**'. The touchscreen will reboot.



When the Lock Memory file is pressed it does an automatic reboot and autostarts MCS-Connect. Check the top right corner of the desktop to make sure the touchscreen is locked.