



# APPLICATION NOTE

## APP #134

### Revision History

Date	Author	Description
03-052019	DEW	Setup

## Test MCS-Magnum Ethernet Connectivity

Any questions regarding this release, contact: [support@mcscontrols.com](mailto:support@mcscontrols.com)

Micro Control Systems, Inc. 5580 Enterprise Parkway Fort Myers, Florida 33905  
(239)694-0089 FAX: (239)694-0031 [www.mcscontrols.com](http://www.mcscontrols.com)

Information contained in this document has been prepared by Micro Control Systems, Inc. and is copyright © protected 2017.  
Copying or distributing this document is prohibited unless expressly approved by MCS.

## 1.1. Windows - Testing for MCS-MAGNUM Ethernet Connectivity

Before testing for connectivity for your MCS-MAGNUM controller, you must know the IP address of controller. You can find the address by going to your Magnum Keypad or Touchscreen

### 1.1.1 KEYPAD - Main Menu

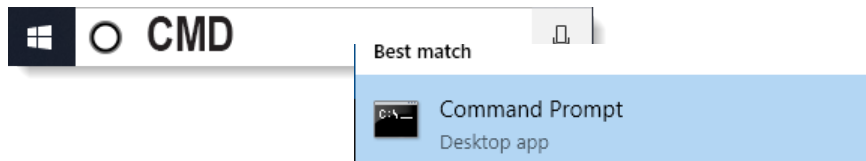
Using the keypad's right arrow key, move to 'Serv Tools', hit enter, arrow down to 'Ethernet' to see your IP address.

### 1.1.2 MCS-Touchscreen

1. At main menu screen, click on MCS-TOOLS
2. Click on 'Utilities'
3. Click on 'LXTerminal'
4. At prompt, type 'ifconfig' to see your IP address.

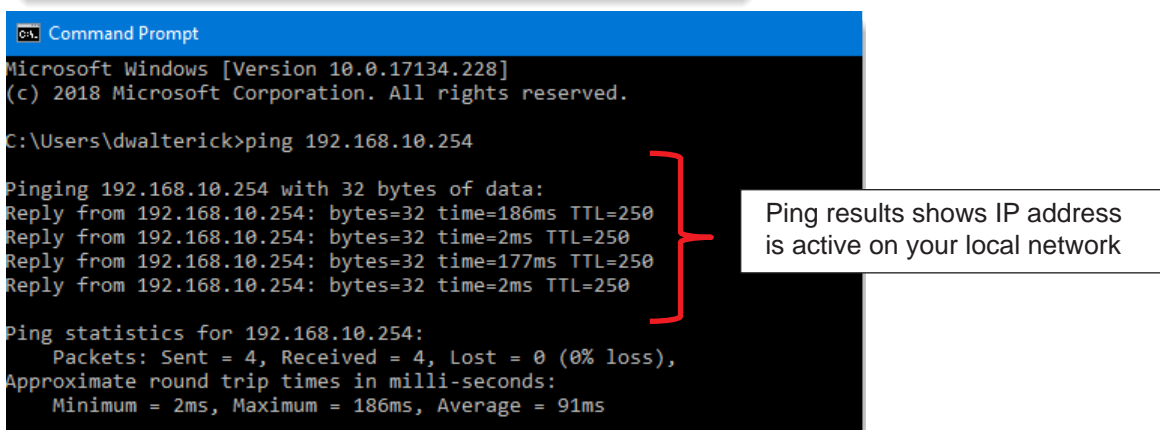
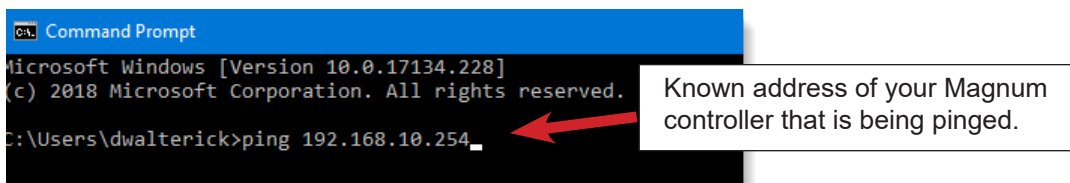
## 1.2. Using WIN Start Menu

1. At the bottom of your window screen type 'CMD' click on command prompt



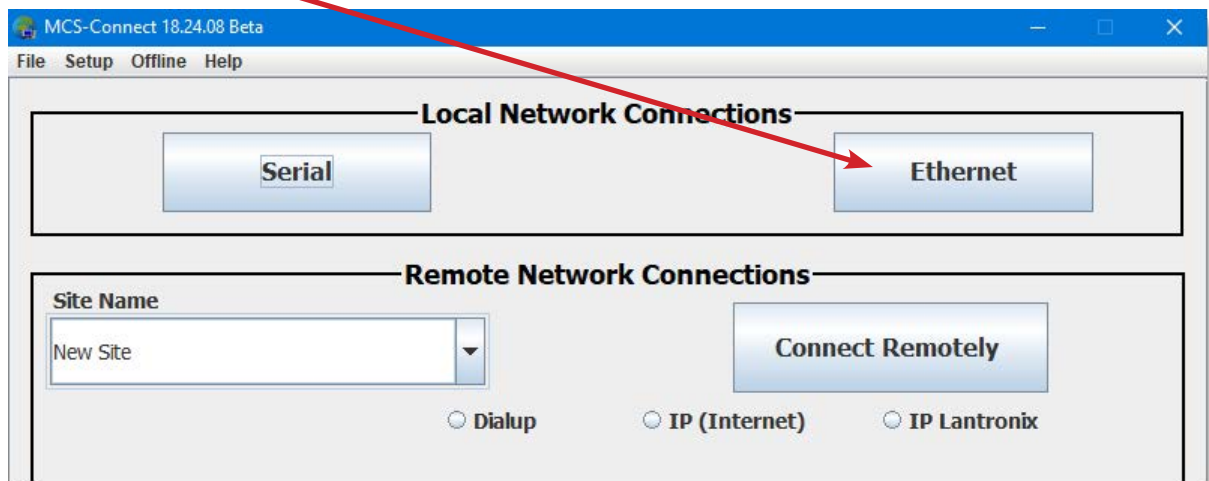
2. The following windows will open

3. Type in the command window: 'ping' than the known IP address for your controller. in this example, 192.168.10.254



### 1.3. MCS-CONNECT Test - using port 5000

1. Select 'Ethernet'

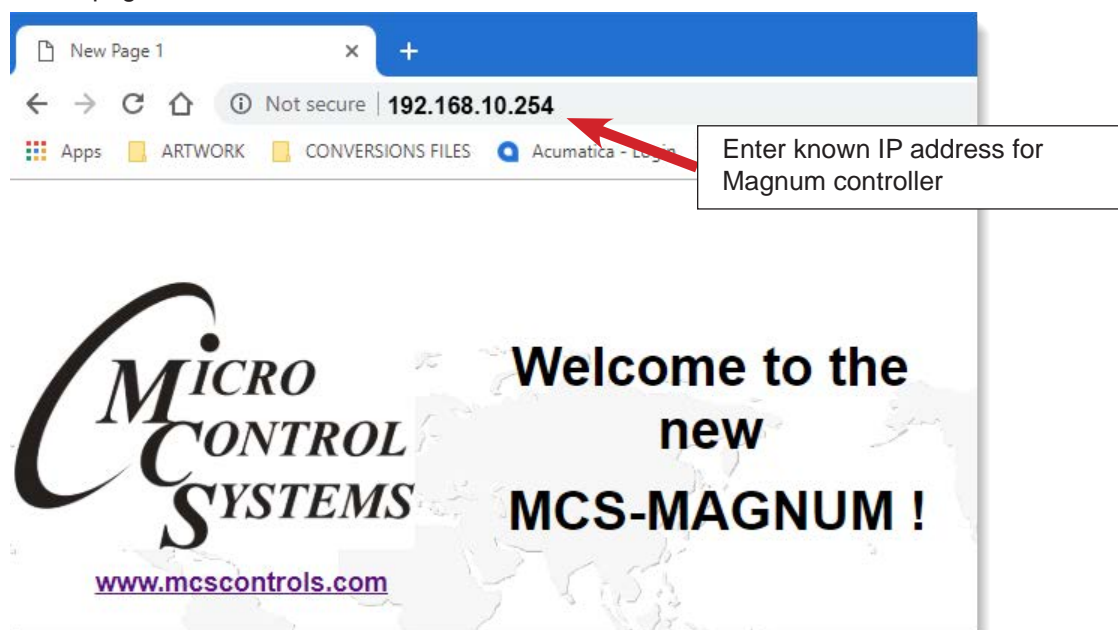


2. Scan will find all MCS-Magnum on the network (using port 5000), below example found 3 MCS-Magnum on network.

Address	HW Serial #	Cfg Name	Company Na...	Unit Model #	Unit Serial #	Installed Da...	Cfg Vers.	Firmware ...	Cfg Date
192.168.10.102 (2)	003463	Chiller 1	WestTechs	Carrier19...	18383	02/07/2...	17	CENTG...	02/28/...
192.168.10.254 (1)	000886	TransNor...	AAON	LL-060-3...	BAAE000...	11/19/2...	17	HVAC ...	03/04/...
192.168.10.240 (1)	000884	HOT ROOM	STI	HOT ROOM		10/02/2...	17	HVAC ...	10/02/...

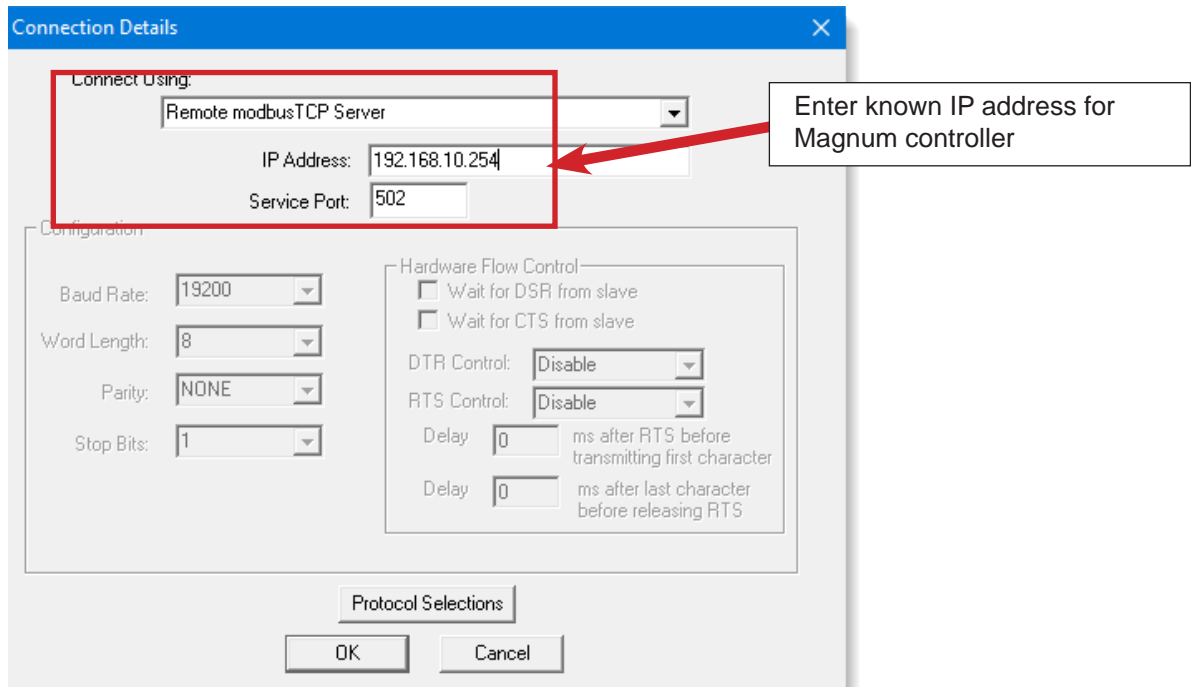
### 1.4. Web Browser Test

1. Open any web browser on a laptop connected to the network. Then enter the known IP address of the MCS-Magnum in the web browser, see below, IP address typed in the web browser and the MCS-Magnum web page.

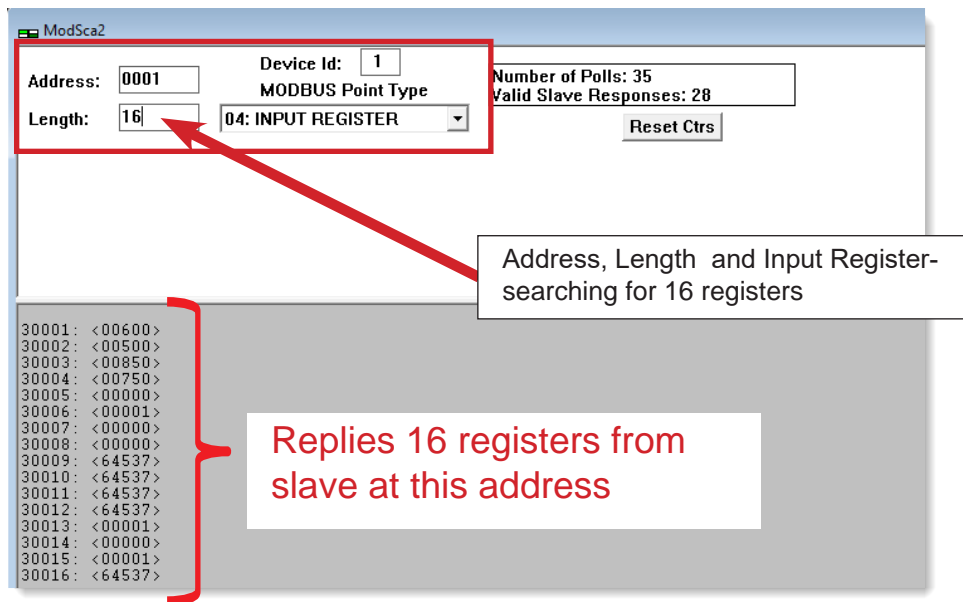


### 1.5. ModScan (or any modbus test tool) – uses port 502

#### 1. Setup ModScan to connect to MCS-Magnum IP address

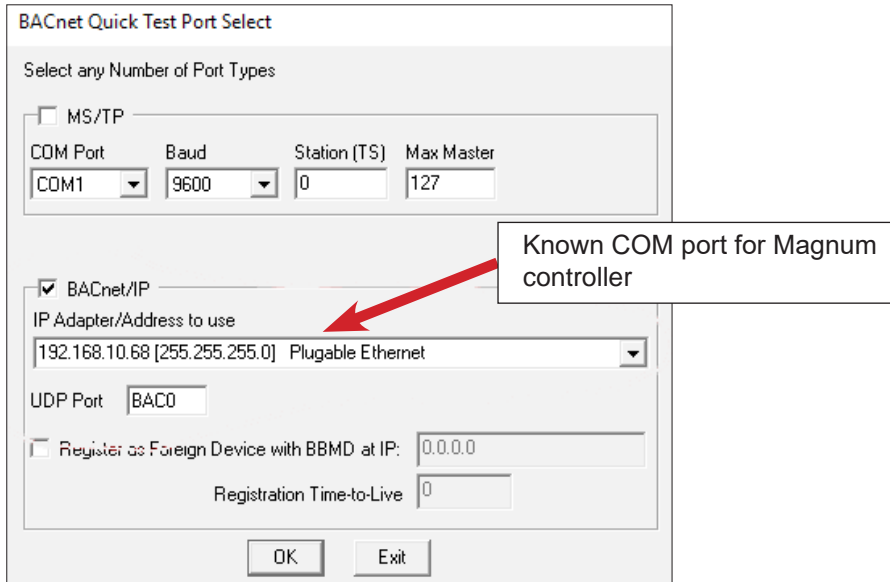


#### 2. Setup ModScan to poll for Sensor input from Slave

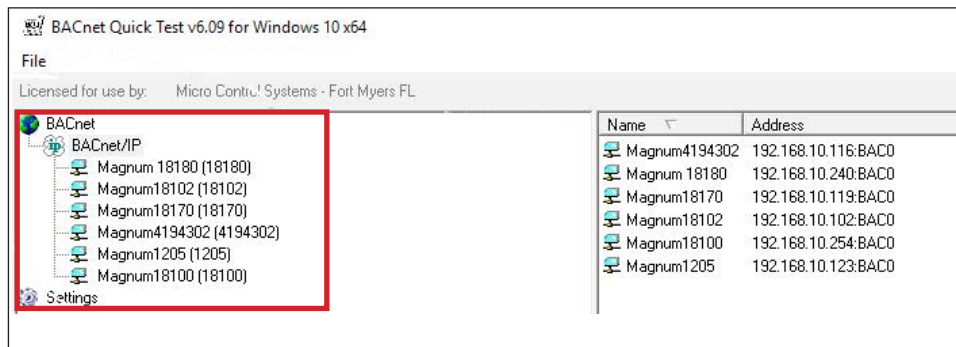


1.6. BQT (or any Bacnet Test tool) – uses UDP port BACO (47808)

1. Select Bacnet IP



2. Select Magnum



3. Read Points

