



# APPLICATION NOTE

## APP #130

# Setting up Network on Touchscreen

### Table of Contents

Capacitive Touch .....	2 to 3
Resistive Touch .....	4 to 8

# Setting Up Network CAPACITIVE TOUCHSCREEN

## Capacitive Touchscreen

Serial Number 102166 and up - Version MCS 1.0.3

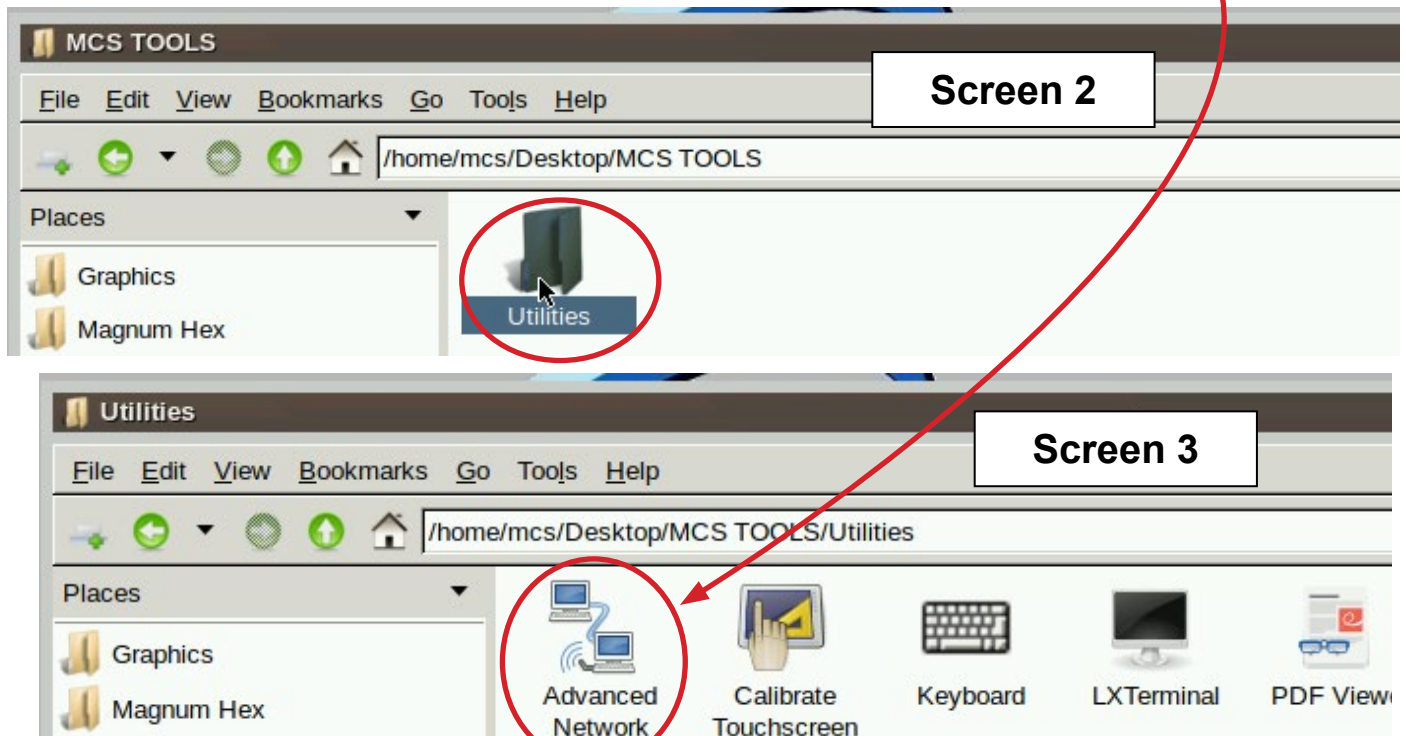
### 5.1. Setting Up Network For Communication With Your Controller

At the touchscreen main screen, click on **'MCS TOOLS' folder** as seen screen 1.



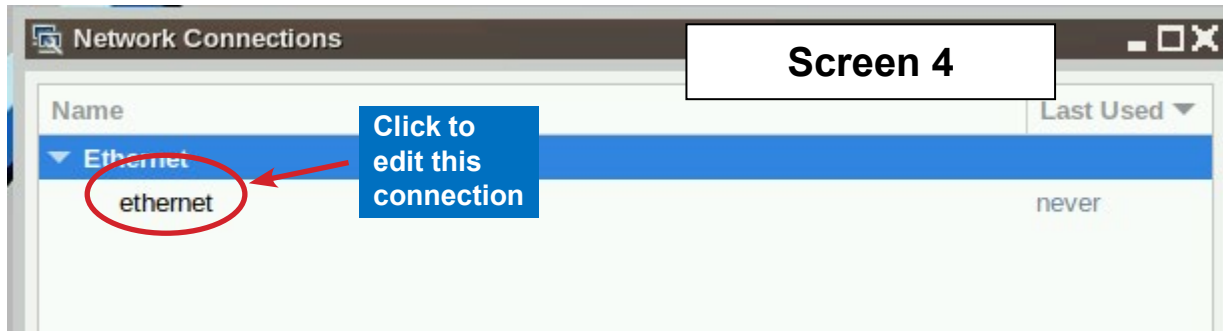
### 5.2. Utilities Folder

Screen 2 appears, click on 'Utilities' to view contents of folder. Click on **'Advanced Network'** as shown in screen 3.

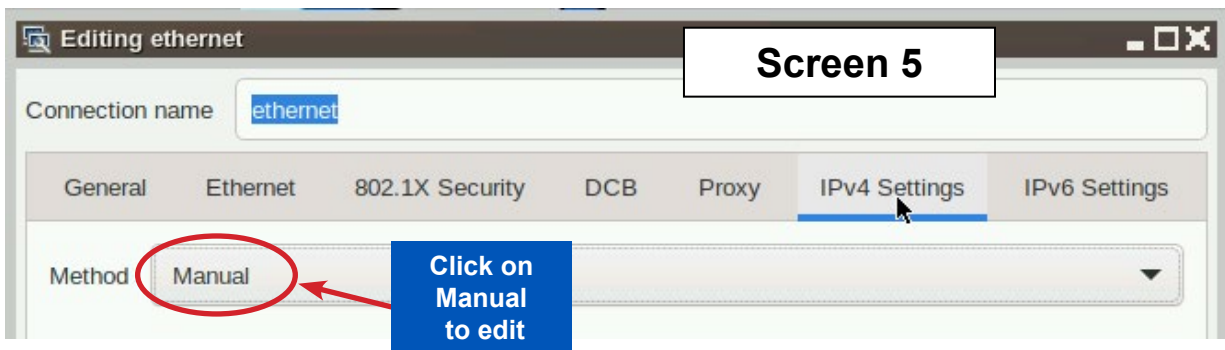


### 5.2.1 Advanced Network Screen

Next display, screen 4 shows network communication screen. Your touchscreen will show **'Ethernet'**, click to add.

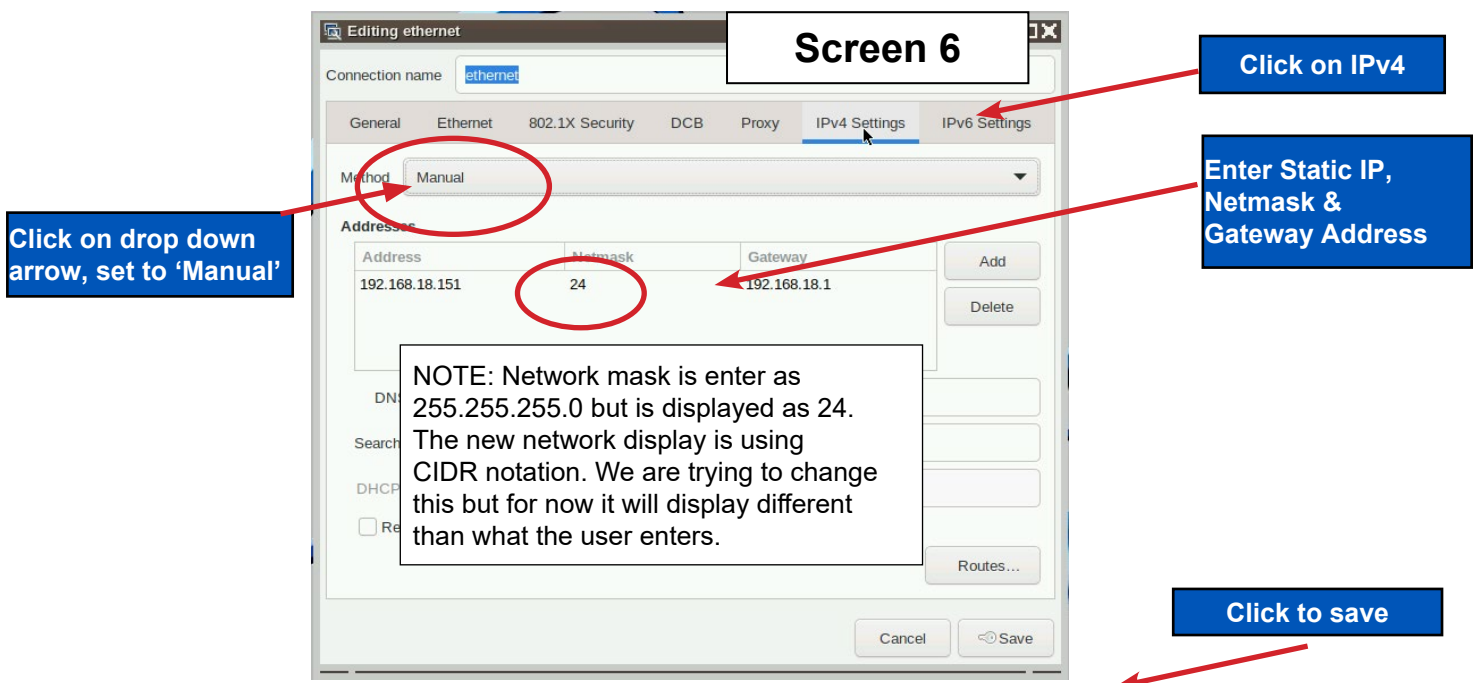


Screen 5, set to 'Manual' to edit.



### 5.2.2 Adding IP Address

On screen 6, click on **'IPV4'** than click on **'Address'**, enter the IP address, the netmask and gateway addresses. Click to save to touchscreen memory.

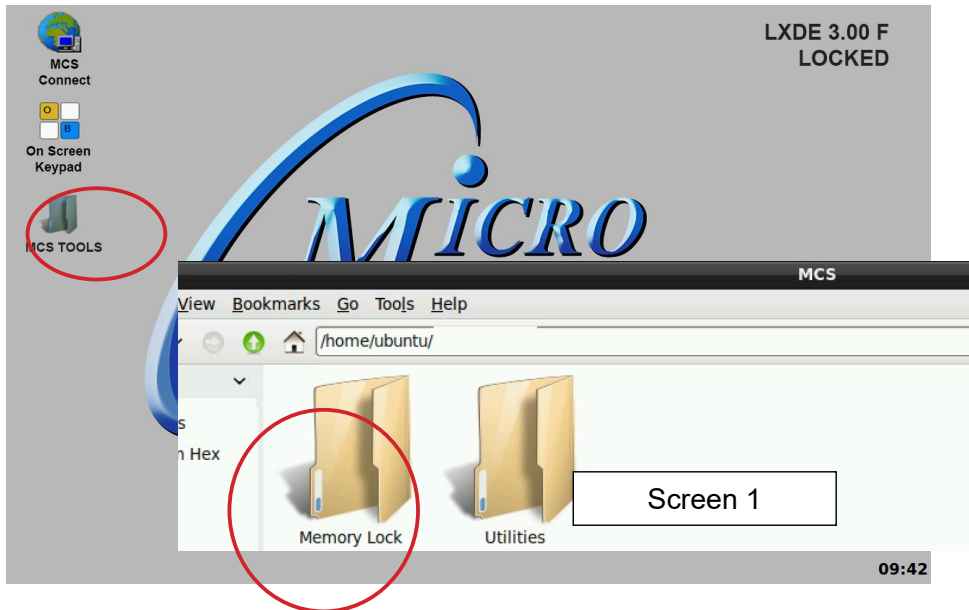


# Setting Up Network RESISTIVE TOUCHSCREEN

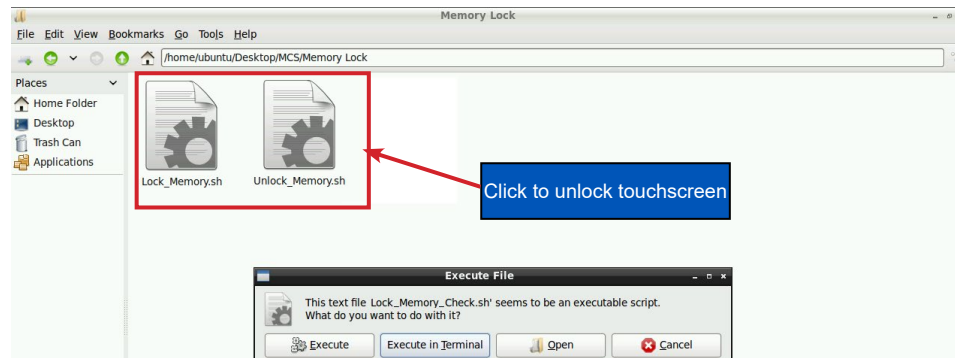
Serial Numbers 106 & below - Version LXDE 3.00J  
 Serial Numbers 107 & above - Version LXDE 3.00J  
 Serial Numbers 100000 & above - Version LXDE 4.00A

## Unlock the Touchscreen

1. Navigate to the 'Desktop', click on '**MCS TOOLS**'.



2. Click on the '**Memory Lock folder**' screen 1.
3. Double click the '**Unlock\_Memory.sh**'



Click to Execute

4. Click '**Execute**'
5. The touchscreen will reboot and show unlocked at the top right corner..



**1. KEYPAD** - On the main screen, click on Keypad Icon as shown in screen 1.

### 'ON SCREEN KEYPAD'

Screen 2 shows keypad display. Use the stylus and keypad to enter or make adjustments.



## Changing the IP address for the Touchscreen to communicate with your Company's Network using Ethernet.



1. At the touchscreen main screen, click on 'MCS TOOLS' folder' as seen in screen 1.

### UTILITIES FOLDER

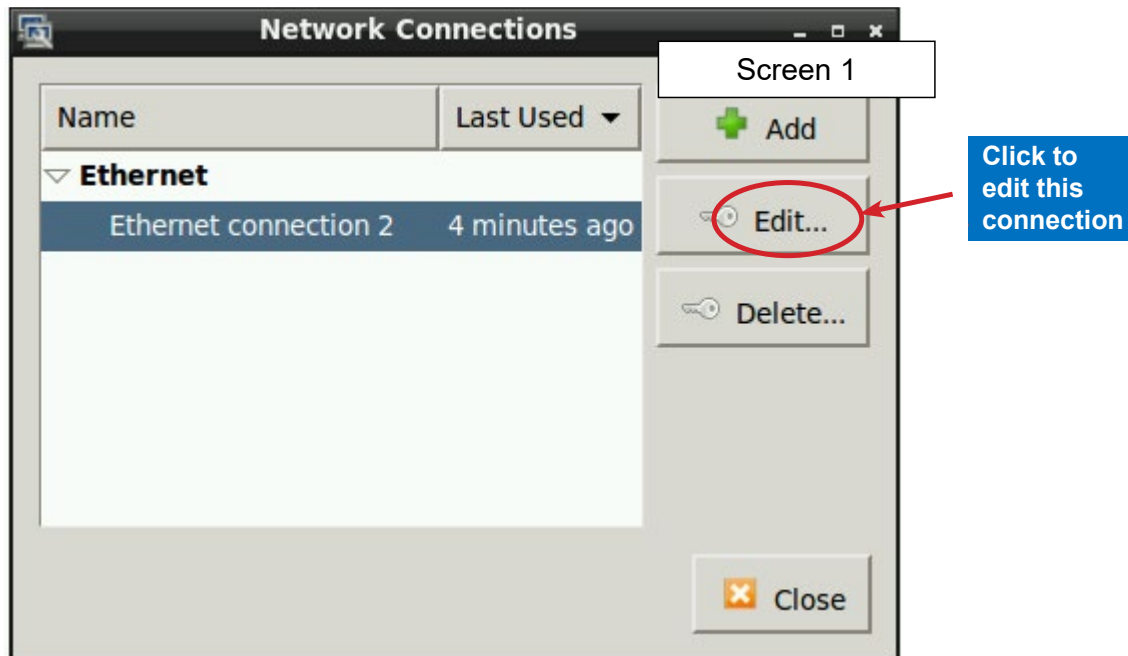
1. Screen 2 appears, click on 'Utilities' to view contents of folder.

2. Click on 'Network Connections' as shown in screen 3.



## Network Connections Screen

1. Next display, screen 1 shows network connections screen.
2. Your touchscreen will show
3. **'Ethernet connection'**, click to highlight.
4. Click on **'Edit'**



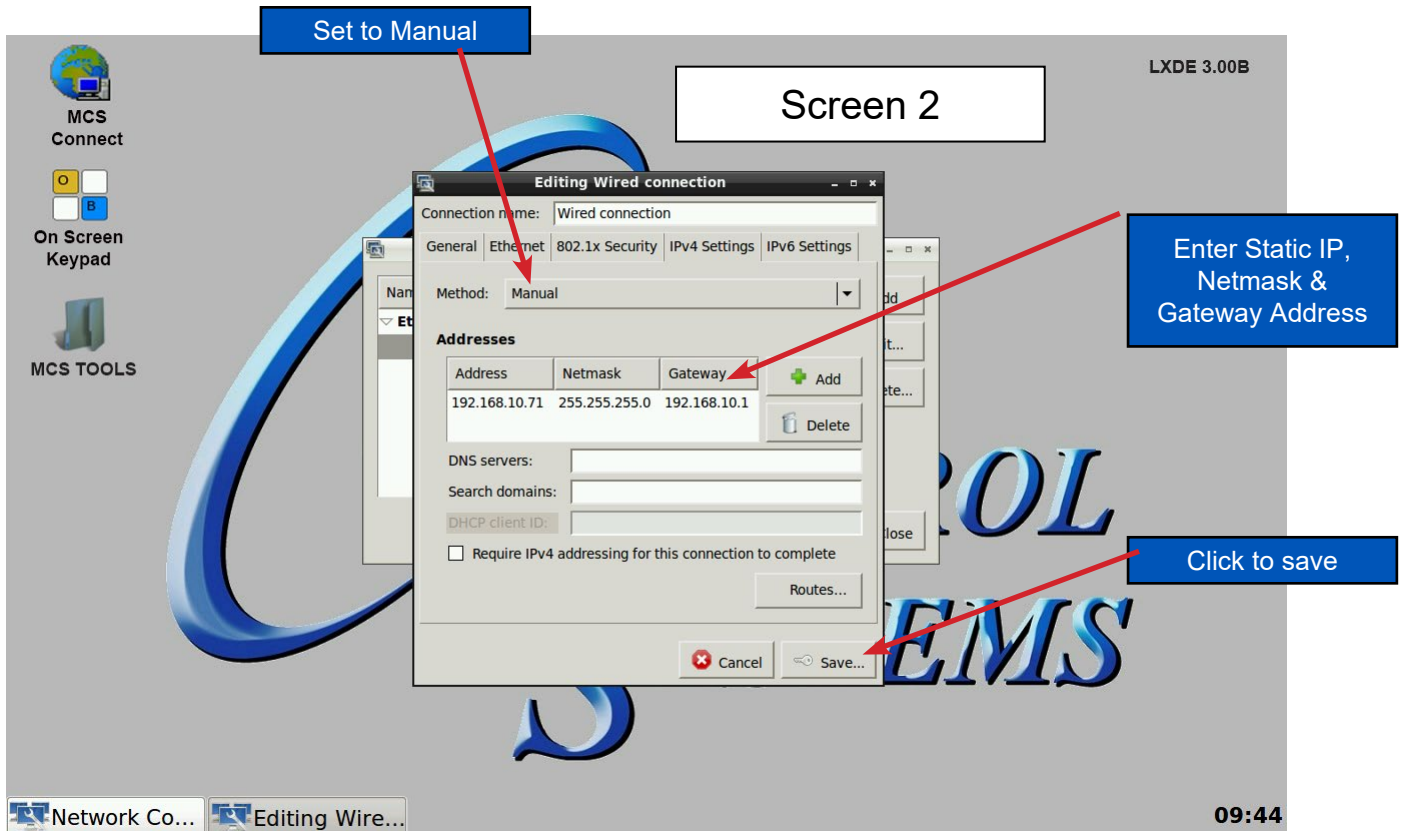
## Selecting a Device MAC address

1. Go to the Ethernet tab.
2. Click the drop down arrow on the right side of "Device MAC address:"
3. Select the MAC address that has (eth\*) at the end. (The number at the end varies).



## Adding IP Address

On screen 2. click on IPV4, than set 'Method' to 'Manual' than click on 'Address', enter the IP address, netmask and gateway addresses. Click to save to touchscreen memory.

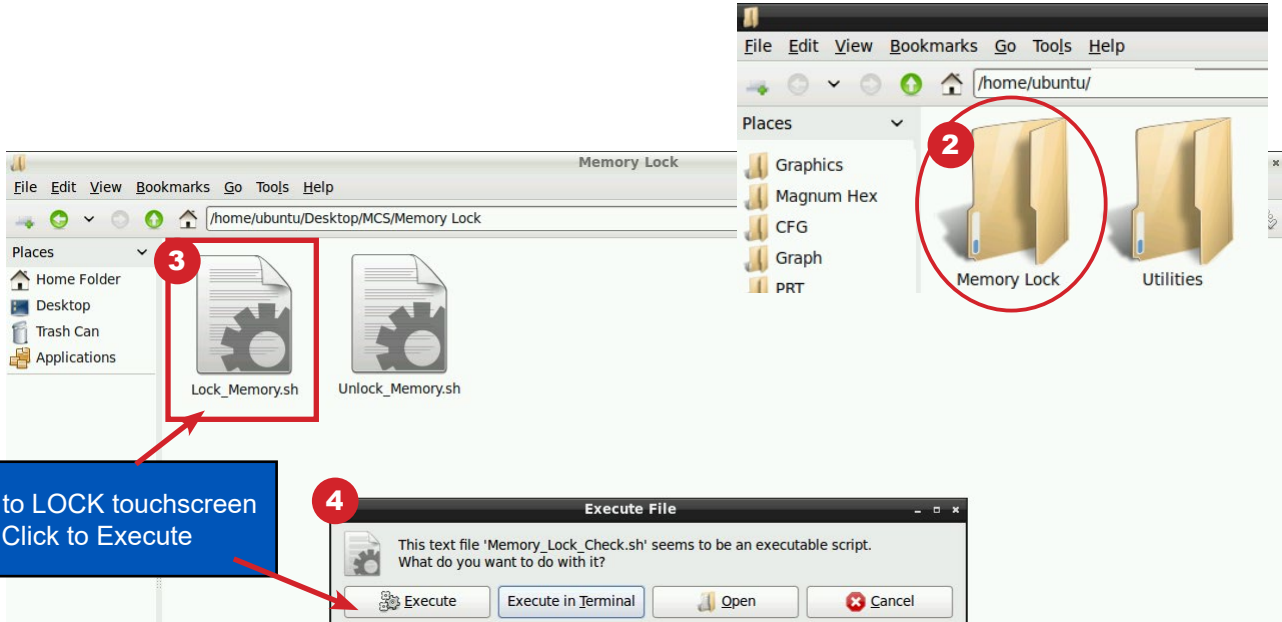
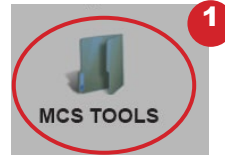


**NOTE; YOU MUST EDIT THE AUTO START ADDRESS**

## Re-Locking Touchscreen



1. Double click the '**MCS TOOLS**' Icon on the Desktop.
2. Double click '**Memory Lock**' sub directory.
3. Double click '**Lock Memory**'.
4. Click '**EXECUTE**'. The touchscreen will reboot.



### Revision History

Date	Author	Description
10-19-17	DEW	Setup from Touchscreen Manual
09-30-19	DEW	edits made as per Bret
04-8-2020	DEW	combine APP 129 AND 127 as per Bret
06-30-2020	DEW	Make changes to APP 129
10-01-2021	CH	Add Mac Address change
07-03-2024	DEW	Change APP include CAP & Resistive