



APPLICATION NOTE

APP123

Revision History

Date	Author	Description
11-18-16	DEW	Saving Extended History Files

SAVING EXTENDED HISTORY FILES IN MCS-CONNECT

Any questions regarding this release, contact: support@mcscontrols.com

Micro Control Systems, Inc. 5580 Enterprise Parkway Fort Myers, Florida 33905
(239)694-0089 FAX: (239)694-0031 www.mcscontrols.com

Information contained in this document has been prepared by Micro Control Systems, Inc. and is copyright © protected 2016.
Copying or distributing this document is prohibited unless expressly approved by MCS.

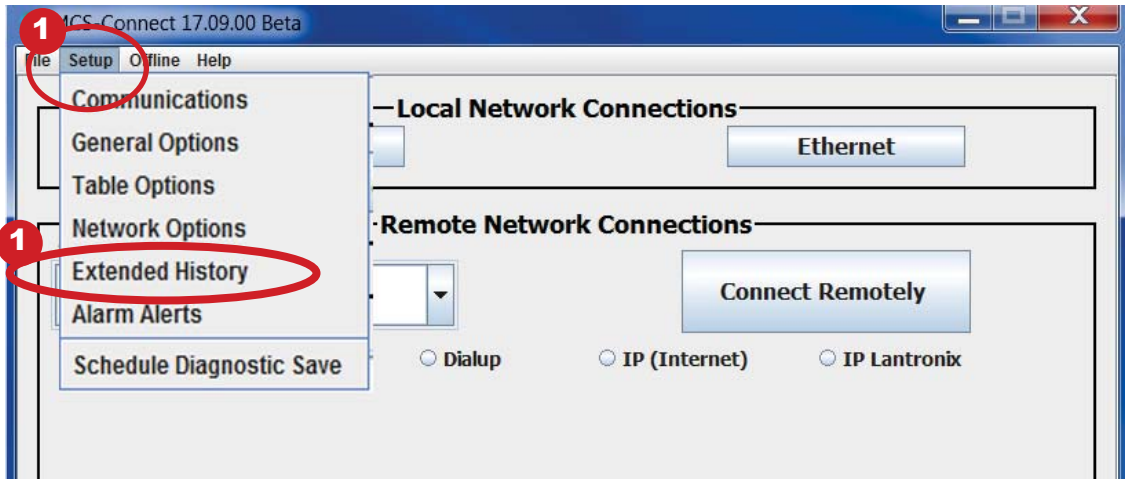
Chapter - 28. Appendix - Saving Extended History Files

28.1. Saving Extended History Files for Viewing

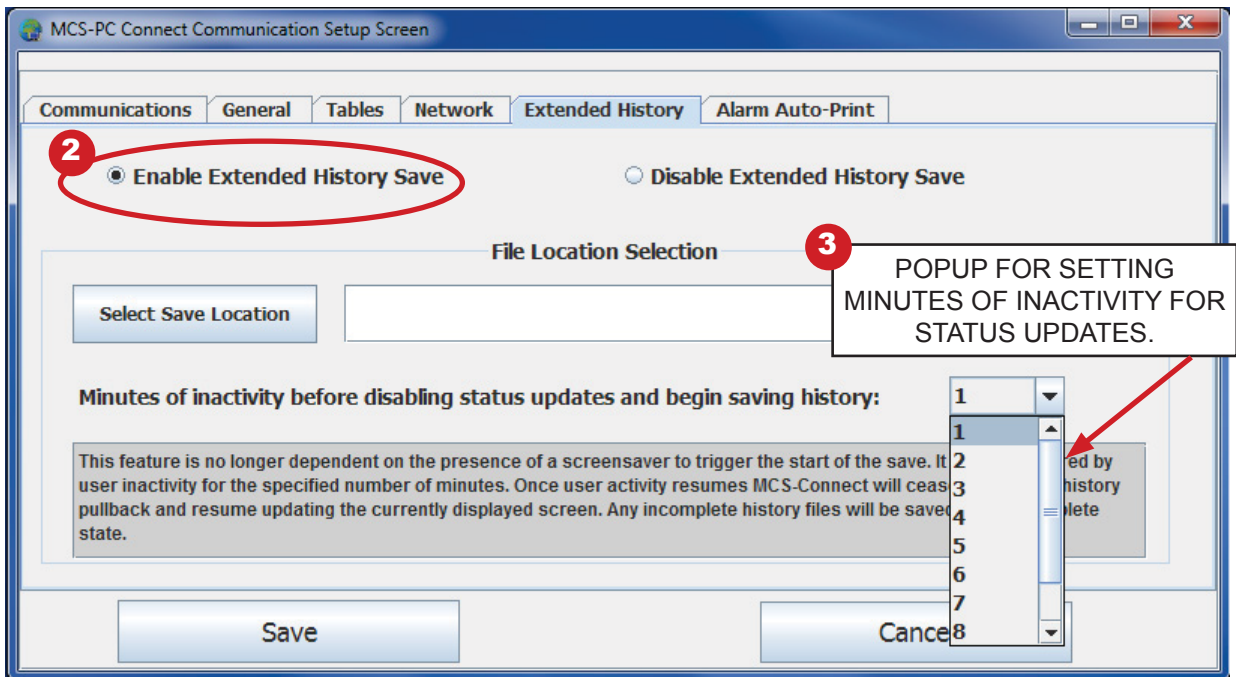
With MCS-CONNECT the technician can enable 'saving history files' to a location on their PC hard drive or to a USB stick including saving on the MCS-TOUCHSCREEN to a USB stick.

Using the setup in MCS-CONNECT, follow the instruction below.

1. Open MCS-CONNECT main screen, click on 'SETUP' than 'EXTENDED HISTORY' as shown below:

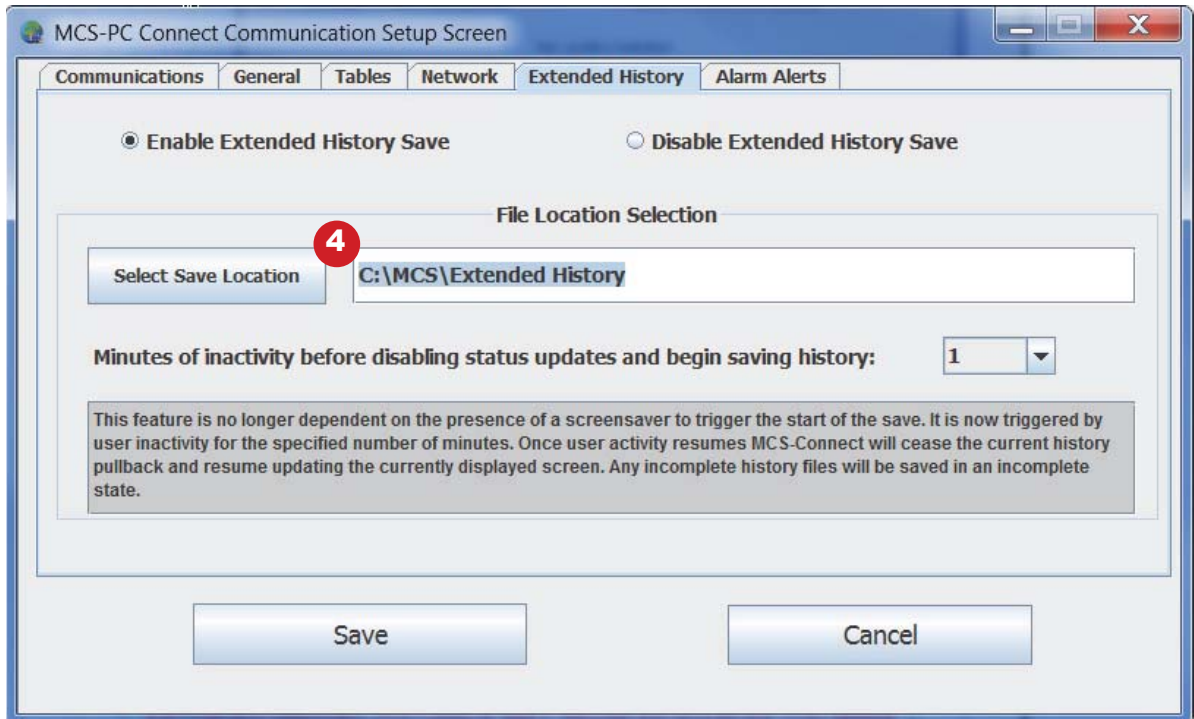


2. Next screen shows the Extended History screen, click on: 'ENABLE EXTENDED HISTORY SAVE'



3. Set the number of minutes of inactivity for status updates to stop from the chiller, which enables the 'EXTENDED HISTORY SAVE' to begin saving.
(The unit will wait the time specified, then 'EXTENDED HISTORY pullback will begin.

- Choose the location for MCS-CONNECT to save the file to. The file location when connected on a PC or laptop can be your 'C' drive and sub directory MCS where most of the MCS-CONNECT files are stored.



Once 'EXTENDED HISTORY SAVE' setup is complete and saved, connect to the controller.

After the time delay is satisfied that was entered in the setup, MCS-CONNECT will begin pulling the current 'Live History' for the controller

ONCE MCS-CONNECT HAS A COMPLETE HISTORY FILE IT WILL WRITE IT TO THE 'SPECIFIED LOCATION'



IMPORTANT:

DO NOT CLICK ON THE COMPUTER OR TOUCHSCREEN AT THIS TIME IT WILL DISABLE EXTENDED HISTORY PULLBACK.

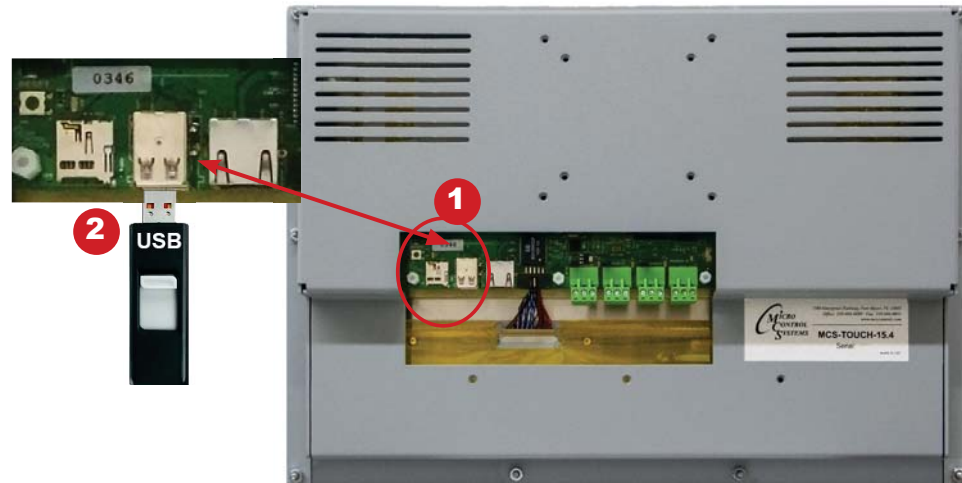
28.2. DISABLE THE EXTENDED HISTORY PULL BACK

- Click on the 'Button Bar' and click 'DISCONNECT FROM THE CONTROLLER'
- Open MCS-CONNECT main screen
- Click on 'SETUP' than 'EXTENDED HISTORY' and
- Click on 'DISABLE EXTENDED HISTORY' and save.

28.3. MCS-TOUCHSCREENS

28.3.1 Saving 'EXTENDED HISTORY' Files on MCS-TOUCHSCREENS

1. On a MCS-TOUCHSCREEN follow the steps below to save the file to a USB drive mounted in the rear of the touchscreen.
2. PLUG IN USB STICK AS SHOWN



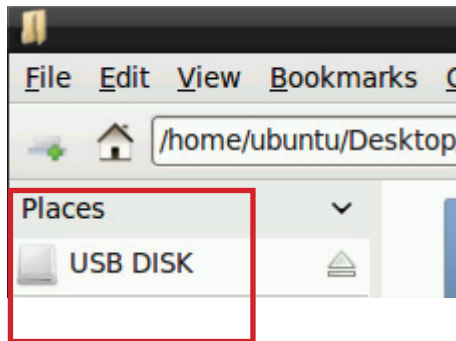
On back of touchscreen, locate the USB PORT as shown on screen 1 and insert a USB stick to copy necessary files. There are two USB ports,

28.3.2 Unlocking Touchscreen

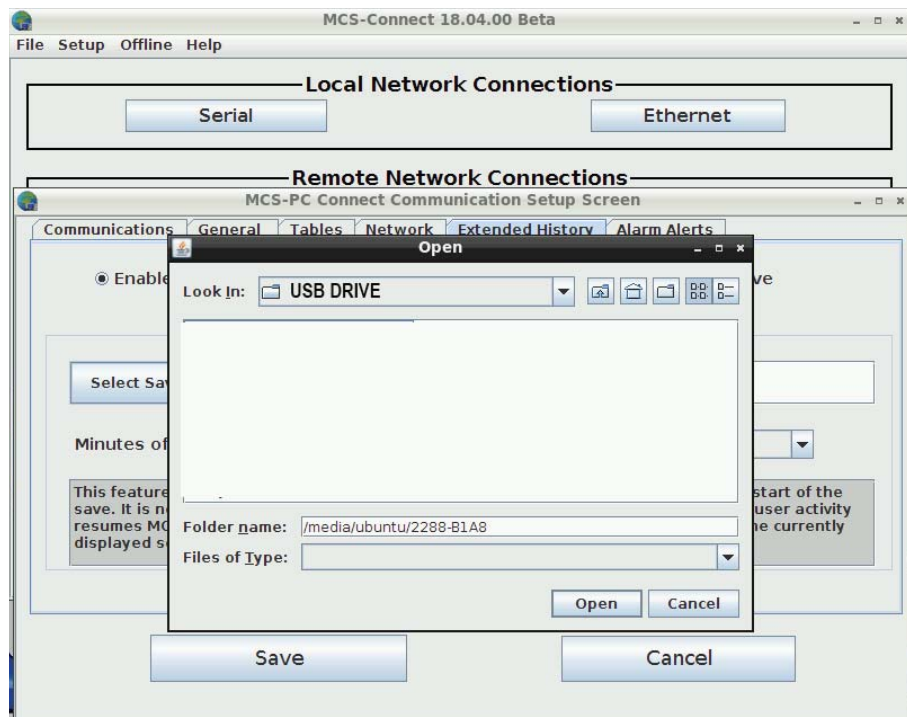
1. Double click the 'MCS TOOLS' Icon on the Desktop.
2. Double click 'Memory Lock' sub directory.
3. Double click 'Unlock Memory'.
4. Click 'EXECUTE'. The touchscreen will reboot
5. MCS-CONNECT WILL RE-BOOT WHEN THE TOUCHSCREEN STARTS
6. Follow steps 1 thru 3 for setting up the 'EXTENDED HISTORY PULLBACK' as described in paragraph 28.1.



7. Navigate to the **/home directory** - click on the 'USB DISK' as shown below.



8. This is the location where the 'EXTENDED HISTORY FILES WILL BE SAVED'



9. Connect to the unit with MCS-CONNECT and the 'EXTENDED HISTORY' pullback will start.

28.3.3 LOCKING THE TOUCHSCREEN

1. Click on '**MCS TOOLS FOLDER**' to open
2. Click on '**Utilities**' to open
3. Click on '**MEMORY LOCK**', **CLICK ON 'LOCK MEMORY'**, click on '**EXECUTE**
**When the Lock Memory file is pressed it does an automatic
reboot and auto starts MCS-Connect.**