



# RC2-610BF Screw Compressor

## Specifications

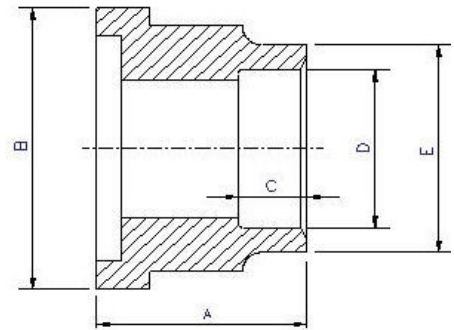
<b>Compressor</b>	Displacement	CFM	60 Hz	433
	Rated Speed	Rpm	60 Hz	3550
	Volume Ratio	Vi		2.6 (standard other Vi available)
	Capacity Control	%		25%,50%,75% & 100% Step Capacity Control, 50%~100% Continuous Stepless Capacity Controls
	Lubrication	Differential Pressure Feed Lubricant		
<b>Motor</b>	Type	3 Phase, 2 Pole, Squirrel Cage, Induction Motor		
	Insulation	Class F		
	Protection	3 PTC Protection 1 per winding		
<b>Lubricant Charge</b>	No internal oil separator or sump			
<b>Hydrostatic Pressure test</b>	lb/in <sup>2</sup> G	597		
<b>Weight</b>	Pounds	2116		
<b>Crated Weight</b>	Pounds	2926		
<b>Crate Dimensions</b>	Inches	50x26x31		

### Standard Compressors Accessories

- Modulating Slide Capacity
- Weather Proof Terminal Box for outdoor applications
- 115/1/60 Control Voltage
- Discharge Check Valve
- Discharge Service Valve (Discharge Stop Valve) with standard connection sizes and supplied with flanges and bushings
- Suction Service Valve (Suction Stop Valves) with standard connection sizes and supplied with flanges and bushings
- Suction Filter
- PSI Relief Valve
- Oil Sight Glass
- PT1000 for Reading Motor Temp
- INT69HBY supporting motor and discharge (PTC) temperature sensor protection as well as Phase Loss and Phase Reversal at Start Up Only

### Ports

- External Oil Cooler
- Liquid Injection (into screw chamber)
- Economizer



### Connections

<b>Discharge Stop Valve</b>	4"					
<b>Discharge Check Valve</b>	4"					
<b>Suction Stop Valve</b>	5"					
<b>Economizer</b>	1 1/8" solder					
<b>Liquid Injection (chamber)</b>	5/8" flare					
<b>Discharge Side</b>	Copper Pipe Sizing 4 1/8"	A	B	C	D	E
<b>Suction Side</b>	Copper Pipe Sizing 5 1/8"	2.99"	5.71"	1.97"	4.14"	4.57"
		2.95"	6.85"	1.38"	5.13"	5.77"

R22, R407C, R404A, R507A, R134a				
Hertz	Volts	Maximum Continuous Current	Y-Δ	
			Locked Rotor Amps (Y)	Locked Rotor Amps (D)
60	460	386	545	1635

**MCC & LRA**