



# RC2-610B Screw Compressor

## Specifications

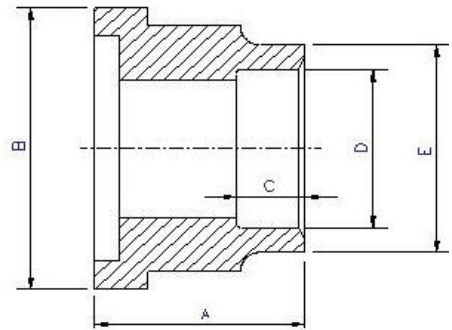
<b>Compressor</b>	Displacement	CFM	60 Hz	433	
	Rated Speed	Rpm	60 Hz	3550	
	Volume Ratio	Vi		2.6 (standard other Vi available)	
	Capacity Control	%			25%,50%,75% & 100% Step Capacity Control, 50%~100% Continuous Stepless Capacity Controls
	Lubrication				Differential Pressure Feed Lubricant
<b>Motor</b>	Type	3 Phase, 2 Pole, Squirrel Cage, Induction Motor			
	Insulation	Class F			
	Protection	3 PTC Protection 1 per winding			
<b>Lubricant Charge</b>	Gallons	6.1			
<b>Oil Heater</b>	Watts	300			
<b>Hydrostatic Pressure test</b>	lb/in <sup>2</sup> G	597			
<b>Weight</b>	Pounds	2116			
<b>Crated Weight</b>	Pounds	2926			
<b>Crate Dimensions</b>	Inches	50x26x31			

## Standard Compressors Accessories

- Modulating Slide Capacity
- Weather Proof Terminal Box for outdoor applications
- 115/1/60 Control Voltage
- 115/1/60 Crankcase heater
- Discharge Check Valve
- Discharge Service Valve (Discharge Stop Valve) with standard connection sizes and supplied with flanges and bushings
- Suction Service Valve (Suction Stop Valves) with standard connection sizes and supplied with flanges and bushings
- Oil Level Float Switch
- Suction Filter
- Oil Filter
- PSI Relief Valve
- Oil Sight Glass
- PT1000 for Reading Motor Temp
- INT69HBY supporting motor and discharge (PTC) temperature sensor protection as well as Phase Loss and Phase Reversal at Start Up Only

## Ports

- External Oil Cooler
- Liquid Injection (into screw chamber)
- Economizer
- Suction, Discharge & Oil Service



## Connections

<b>Discharge Stop Valve</b>	3"				
<b>Discharge Check Valve</b>	3"				
<b>Suction Stop Valve</b>	5"				
<b>Economizer</b>	1 1/8" solder				
<b>Liquid Injection (chamber)</b>	5/8" flare				
<b>Discharge Side</b>	Copper Pipe Sizing 3 1/8"	A	B	C	D
<b>Suction Side</b>	Copper Pipe Sizing 5 1/8"	2.59"	4.72"	1.77"	3.14"
		2.95"	6.85"	1.38"	5.13"
					3.54"
					5.77"

## R22, R407C, R404A, R507A, R134a

Hertz	Volts	Maximum Continuous Current	Y-Δ	
			Locked Rotor Amps (Y)	Locked Rotor Amps (D)
60	460	386	545	1635

**MCC & LRA**