



RC2-410B Screw Compressor

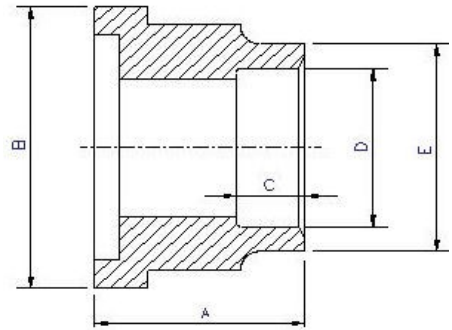
Specifications		Displacement	CFM	60 Hz	288	
Compressor	Rated Speed	Rpm	60 Hz		3550	
	Volume Ratio	Vi		2.6 (standard other Vi available)		
	Nominal Hp	146 Hp at 60 Hz				
	Capacity Control	%		25%,50%,75% & 100% Step Capacity Control, 50%~100% Continuous Stepless Capacity Controls		
	Lubrication	Differential Pressure Feed Lubricant				
	Motor	Type	3 Phase, 2 Pole, Squirrel Cage, Induction Motor			
Insulation		Class F				
Protection		3 PTC Protection 1 per winding				
Lubricant Charge	Gallons	4.0				
Oil Heater	Watts	300				
Hydrostatic Pressure test	lb/in ² G	597				
Weight	Pounds	1631 Comp. (skid 66x33x37-Crated weight 2046)				

Standard Compressors Accessories

- Modulating Slide Capacity
- Weather Proof Terminal Box for outdoor applications
- 115/1/60 Control Voltage
- 115/1/60 Crankcase heater
- Horizontal Discharge Check Valve
- Discharge Service Valve (Discharge Stop Valve) with standard connection sizes and supplied with flanges and bushings
- Suction Service Valve (Suction Stop Valves) with standard connection sizes and supplied with flanges and bushings
- Oil Level Float Switch
- Suction Filter
- Oil Filter
- PSI Relief Valve
- Oil Sight Glass
- PT1000 for Reading Motor Temp
- INT69HBY supporting motor and discharge (PTC) temperature sensor protection as well as Phase Loss and Phase Reversal at Start Up Only

Ports

- External Oil Cooler
- Liquid Injection (into screw chamber)
- Economizer
- Suction, Discharge & Oil Service



Connections

Discharge Stop Valve	2 1/2"					
Horizontal Discharge Check Valve	2 1/2"					
Suction Stop Valve	4"					
Economizer	7/8" solder					
Liquid Injection (chamber)	5/8" flare	A	B	C	D	E
Discharge Side	Copper Pipe Sizing 2 5/8"	2.36"	4.33"	1.38"	2.63"	3.03"
Suction Side	Copper Pipe Sizing 4 1/8"	2.99"	5.71"	1.97"	4.14"	4.57"

MCC & LRA

R22, R407C, R404A, R507A, R134a

Hertz	Volts	Maximum Continuous Current	Y-Δ		Part Wind Start	
			Locked Rotor Amps (Y)	Locked Rotor Amps (D)	Locked Rotor Amps (D)	Locked Rotor Amps (DD)
60	460	267	305	915	646	950