

RC2-320BF Screw Compressor

Specifications

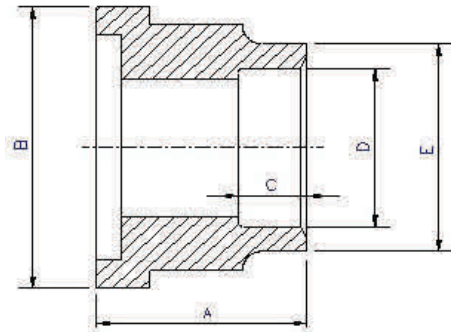
Compressor	Displacement	CFM	60 Hz	226
	Rated Speed	Rpm	60 Hz	3550
	Volume Ratio	Vi		2.6 (standard other Vi available)
	Capacity Control	%		25%,50%,75% & 100% Step Capacity Control, 50%~100% Continuous Stepless Capacity Controls
Motor	Lubrication	Differential Pressure Feed Lubricant		
	Type	3 Phase, 2 Pole, Squirrel Cage, Induction Motor		
	Insulation	Class F		
	Protection	3 PTC Protection 1 per winding		
Lubricant Charge	No internal oil separator or sump			
Hydrostatic Pressure test	lb/in ² G	597		
Weight	Pounds	1323		
Crated Weight	Pounds	1676		
Crate Dimensions	Inches	61x32x35		

Standard Compressors Accessories

- Modulating Slide Capacity
- Weather Proof Terminal Box for outdoor applications
- 115/1/60 Control Voltage
- Discharge Check Valve
- Discharge Service Valve (Discharge Stop Valve) with standard connection sizes and supplied with flanges and bushings
- Suction Service Valve (Suction Stop Valves) with standard connection sizes and supplied with flanges and bushings
- Suction Filter
- PSI Relief Valve
- Oil Sight Glass
- PT1000 for Reading Motor Temp
- INT69HBY supporting motor and discharge (PTC) temperature sensor protection as well as Phase Loss and Phase Reversal at Start Up Only

Ports

- External Oil Cooler
- Liquid Injection (into screw chamber)
- Economizer



Connections

Discharge Stop Valve	2 1/2"
Discharge Check Valve	2 1/2"
Suction Stop Valve	3"
Economizer	7/8" solder
Liquid Injection (chamber)	5/8" flare
Discharge Side	Copper Pipe Sizing 2 5/8"
Suction Side	Copper Pipe Sizing 3 1/8"

	A	B	C	D	E
Discharge Side	2.36"	4.33"	1.38"	2.63"	3.03"
Suction Side	2.60"	4.72"	1.77"	3.14"	3.54"

MCC & LRA

R22, R407C, R404A, R507A, R134a

Hertz	Volts	Maximum Continuous Current	Y-Δ		Part Wind Start	
			Locked Rotor Amps (Y)	Locked Rotor Amps (D)	Locked Rotor Amps (D)	Locked Rotor Amps (DD)
60	220	431	520	1560	1121	1725
60	460	206	272	815	497	765