



## RC2-200A Screw Compressor-R134a

### Specifications

<b>Compressor</b>	Displacement	CFM	60 Hz	137
	Rated Speed	Rpm	60 Hz	3550
	Volume Ratio	Vi		2.6 (standard other Vi available)
	Nominal Hp	45 Hp at 60 Hz		
	Capacity Control	%		25%,50%,75% & 100% Step Capacity Control, 50%~100% Continuous Stepless Capacity Controls
	Lubrication	Differential Pressure Feed Lubricant		
<b>Motor</b>	Type	3 Phase, 2 Pole, Squirrel Cage, Induction Motor		
	Insulation	Class F		
	Protection	3 PTC Protection 1 per winding		
<b>Lubricant Charge</b>	No internal oil separator or sump			
<b>Hydrostatic Pressure test</b>	lb/in <sup>2</sup> G	597		
<b>Weight</b>	Pounds	926		

### Standard Compressors Accessories

- Modulating Slide Capacity
- Weather Proof Terminal Box for outdoor applications
- 115/1/60 Control Voltage
- Horizontal Discharge Check Valve
- Discharge Service Valve (Discharge Stop Valve) with standard connection sizes and supplied with flanges and bushings
- Suction Service Valve (Suction Stop Valves) with standard connection sizes and supplied with flanges and bushings
- Suction Filter
- PSI Relief Valve
- Oil Sight Glass
- PT1000 for Reading Motor Temp
- INT69HBY supporting motor and discharge (PTC) temperature sensor protection as well as Phase Loss and Phase Reversal at Start Up Only

### Ports

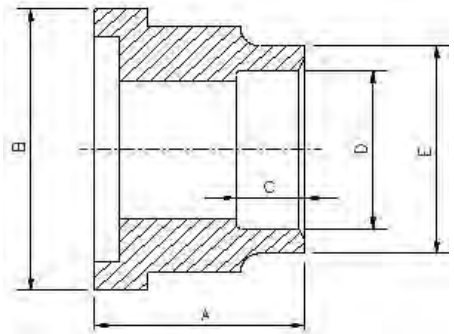
- External Oil Cooler
- Liquid Injection (into screw chamber)
- Economizer

### Connections

<b>Discharge Stop Valve</b>	2"
<b>Horizontal Discharge Check Valve</b>	2"
<b>Suction Stop Valve</b>	2 1/2"
<b>Economizer</b>	5/8" solder
<b>Liquid Injection (chamber)</b>	5/8" flare
<b>Discharge Side</b>	Copper Pipe Sizing 2 1/8"
<b>Suction Side</b>	Copper Pipe Sizing 2 5/8"

	A	B	C	D	E
Discharge Side	1.99"	3.54"	1.18"	2.14"	2.56"
Suction Side	2.36"	4.33"	1.38"	2.63"	3.03"



### MCC & LRA

#### Optimizer for R134a

Hertz	Volts	Maximum Continuous Current	Y-Δ		Part Wind Start	
			Locked Rotor Amps (Y)	Locked Rotor Amps (D)	Locked Rotor Amps (D)	Locked Rotor Amps (DD)
60	220	214	198	595	305	610
60	460	102	108	325	163	325