



## RC2-180B Screw Compressor

### Specifications

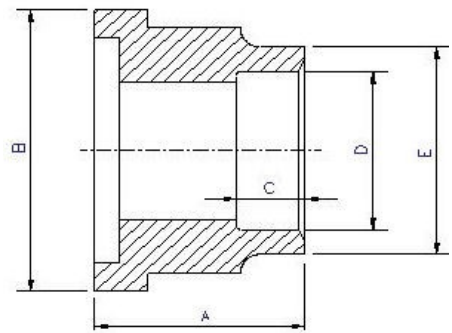
<b>Compressor</b>	Displacement	CFM	60 Hz	127
	Rated Speed	Rpm	60 Hz	3550
	Nominal Hp			66 at 60Hz
	Volume Ratio	Vi		2.6 (standard other Vi available)
	Capacity Control	%		33%,66% & 100% Step Capacity Control, 33%~100% Continuous Stepless Capacity Controls
	Lubrication			Differential Pressure Feed Lubricant
<b>Motor</b>	Type			3 Phase, 2 Pole, Squirrel Cage, Induction Motor
	Insulation			Class F
	Protection			3 PTC Protection 1 per winding
<b>Lubricant Charge</b>	Gallons			1.9
<b>Oil Heater</b>	Watts			150
<b>Hydrostatic Pressure test</b>	lb/in <sup>2</sup> G			597
<b>Weight</b>	Pounds			739 Comp. (skid 50x26x31—Crated weight 946)

### Standard Compressors Accessories

- Modulating Slide Capacity
- Weather Proof Terminal Box for outdoor applications
- 115/1/60 Control Voltage
- 115/1/60 Crankcase heater
- Horizontal Discharge Check Valve
- Discharge Service Valve (Discharge Stop Valve) with standard connection sizes and supplied with flanges and bushings
- Suction Service Valve (Suction Stop Valves) with standard connection sizes and supplied with flanges and bushings
- Oil Level Float Switch
- Suction Filter
- Oil Filter
- PSI Relief Valve
- Oil Sight Glass
- PT1000 for Reading Motor Temp
- INT69HBY supporting motor and discharge (PTC) temperature sensor protection as well as Phase Loss and Phase Reversal at Start Up Only

### Ports

- External Oil Cooler
- Liquid Injection (into screw chamber)
- Economizer
- Suction, Discharge & Oil Service



### Connections

<b>Discharge Stop Valve</b>	1 1/2"				
<b>Horizontal Discharge Check Valve</b>	1 1/2"				
<b>Suction Stop Valve</b>	2 1/2"				
<b>Economizer</b>	5/8" solder				
<b>Liquid Injection (chamber)</b>	5/8" flare				
<b>Discharge Side</b>	Copper Pipe Sizing 1 5/8"	A	B	C	D
<b>Suction Side</b>	Copper Pipe Sizing 2 5/8"	2.05"	2.95"	1.38"	1.64"
		2.36"	4.33"	1.38"	2.63"
					2.05"
					3.03"

### MCC & LRA

R22, R407C, R404A, R507A, R134a

Hertz	Volts	Maximum Continuous Current	Y-Δ		Part Wind Start	
			Locked Rotor Amps (Y)	Locked Rotor Amps (D)	Locked Rotor Amps (D)	Locked Rotor Amps (DD)
60	220	249	310	930	444	840
60	460	119	162	485	239	450