



# RC2-170B Screw Compressor

## Specifications

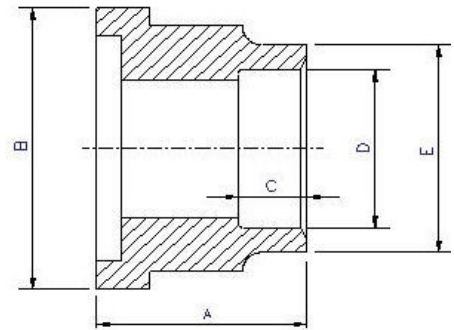
<b>Compressor</b>	Displacement	CFM	60 Hz	122
	Rated Speed	Rpm	60 Hz	3550
	Volume Ratio	Vi		2.6 (standard other Vi available)
	Capacity Control	%		25%, 50% , 75% & 100% Step Capacity Control, 50%~100% Continuous Stepless Capacity Controls
<b>Motor</b>	Lubrication	Differential Pressure Feed Lubricant		
	Type	3 Phase, 2 Pole, Squirrel Cage, Induction Motor		
	Insulation	Class F		
	Protection	3 PTC Protection 1 per winding		
<b>Lubricant Charge</b>	Gallons	1.9		
<b>Oil Heater</b>	Watts	150		
<b>Hydrostatic Pressure test</b>	lb/in <sup>2</sup> G	597		
<b>Weight</b>	Pounds	837		
<b>Crated Weight</b>	Pounds	1093		
<b>Crate Dimensions</b>	Inches	54x28x31		

## Standard Compressors Accessories

- Modulating Slide Capacity
- Weather Proof Terminal Box for outdoor applications
- 115/1/60 Control Voltage
- 115/1/60 Crankcase heater
- Discharge Check Valve
- Discharge Service Valve (Discharge Stop Valve) with standard connection sizes and supplied with flanges and bushings
- Suction Service Valve (Suction Stop Valves) with standard connection sizes and supplied with flanges and bushings
- Oil Level Float Switch
- Suction Filter
- Oil Filter
- PSI Relief Valve
- Oil Sight Glass
- PT1000 for Reading Motor Temp
- INT69HBY supporting motor and discharge (PTC) temperature sensor protection as well as Phase Loss and Phase Reversal at Start Up Only

## Ports

- External Oil Cooler
- Liquid Injection (into screw chamber)
- Economizer
- Suction, Discharge & Oil Service



## Connections

<b>Discharge Stop Valve</b>	1 1/2"					
<b>Discharge Check Valve</b>	1 1/2"					
<b>Suction Stop Valve</b>	2 1/2"					
<b>Economizer</b>	5/8" solder					
<b>Liquid Injection (chamber)</b>	5/8" flare					
<b>Discharge Side</b>	Copper Pipe Sizing 1 5/8"	A	B	C	D	E
<b>Suction side</b>	Copper Pipe Sizing 2 5/8"	2.05"	2.95"	1.38"	1.64"	2.05"
		2.36"	4.33"	1.38"	2.63"	3.03"

R22, R407C, R404A, R507A, R134a						
Hertz	Volts	Maximum Continuous Current	Y-Δ		Part Wind Start	
			Locked Rotor Amps (Y)	Locked Rotor Amps (D)	Locked Rotor Amps (D)	Locked Rotor Amps (DD)
60	220	243	253	760	387	730
60	460	116	140	420	207	390

MCC & LRA