

RC2-140B Screw Compressor

Specifications



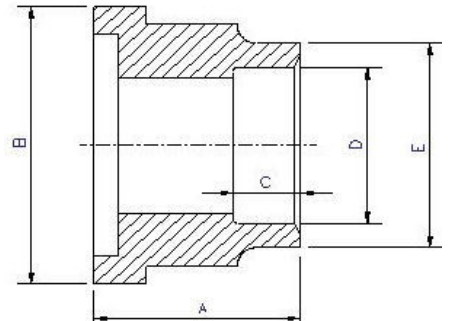
Compressor

Motor	Displacement	CFM	60 Hz	97
	Rated Speed	Rpm	60 Hz	3550
Motor	Nominal Hp	50 at 60 Hz		
	Volume Ratio	Vi	2.6 (standard other Vi available)	
	Capacity Control	%	33%, 66% & 100% Step Capacity Control, 33%~100% Continuous Stepless Capacity Controls	
Motor	Lubrication	Differential Pressure Feed Lubricant		
	Type	3 Phase, 2 Pole, Squirrel Cage, Induction Motor		
	Insulation	Class F		
Motor	Protection	3 PTC Protection 1 per winding		
	Lubricant Charge	Gallons	1.9	
	Oil Heater	Watts	150	
Motor	Hydrostatic Pressure test	lb/in ² G	597	
Motor	Weight	Pounds	628 Comp. (skid 50x26x31- Crated weight 827)	

Standard Compressors Accessories

Ports

- Modulating Slide Capacity
- Weather Proof Terminal Box for outdoor applications
- 115/1/60 Control Voltage
- 115/1/60 Crankcase heater
- Horizontal Discharge Check Valve
- Discharge Service Valve (Discharge Stop Valve) with standard connection sizes and supplied with flanges and bushings
- Suction Service Valve (Suction Stop Valves) with standard connection sizes and supplied with flanges and bushings
- Oil Level Float Switch
- Suction Filter
- Oil Filter
- PSI Relief Valve
- Oil Sight Glass
- PT1000 for Reading Motor Temp
- INT69HBY supporting motor and discharge (PTC) temperature sensor protection as well as Phase Loss and Phase Reversal at Start Up Only
- External Oil Cooler
- Liquid Injection (into screw chamber)
- Economizer
- Suction, Discharge & Oil Service



Connections

			Part #										
Connections	Discharge Stop Valve	1 1/2"	3101-1005AD	A	B	C	D	E					
	Horizontal Discharge Check Valve	1 1/2"	3101-1005AD										
	Suction Stop Valve	2"	3131-1004AA										
	Economizer	5/8" solder	N/A										
	Liquid Injection (chamber)	3/8" flare	N/A										
	Discharge Side	Copper Pipe Sizing 1 5/8"	3101-101AB						2.05"	2.95"	1.38"	1.64"	2.05"
	Suction Side	Copper Pipe Sizing 2 1/8"	3131-101FA						1.99"	3.54"	1.18"	2.14"	2.56"

MCC & LRA

R22, R407C, R404A, R507A, R134a						
Hertz	Volts	Maximum Continuous Current	Y-Δ		Part Wind Start	
			Locked Rotor Amps (Y)	Locked Rotor Amps (D)	Locked Rotor Amps (D)	Locked Rotor Amps (DD)
60	220	188	198	595	305	610
60	460	90	108	325	163	325