



RC2-100B Screw Compressor

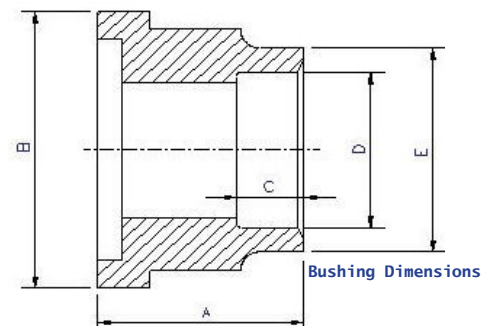
Specifications		Displacement	CFM	60 Hz	69
Compressor	Rated Speed	Rpm	60 Hz		3550
	Nominal HP				38hp at 60Hz—208 Voltage
	Volume Ratio	Vi			2.6 (standard other Vi available)
	Capacity Control	%			33%, 66% & 100% Step Capacity Control, 33%~100% Continuous Stepless Capacity Controls
	Lubrication				Differential Pressure Feed Lubricant
	Motor	Type			
Insulation					Class F
Protection					3 PTC Protection 1 per winding
Lubricant Charge	Gallons				1.9
Oil Heater	Watts				150
Hydrostatic Pressure test	lb/in ² G				597
Weight	Pounds				617 Comp. (skid 50x26x31 - Crated weight 816)

Standard Compressors Accessories

- Modulating Slide Capacity
- Weather Proof Terminal Box for outdoor applications
- 115/1/60 Control Voltage
- 115/1/60 Crankcase heater
- Horizontal Discharge Check Valve
- Discharge Service Valve (Discharge Stop Valve) with standard connection sizes and supplied with flanges and bushings
- Suction Service Valve (Suction Stop Valves) with standard connection sizes and supplied with flanges and bushings
- Oil Level Float Switch
- Suction Filter
- Oil Filter
- PSI Relief Valve
- Oil Sight Glass
- PT1000 for Reading Motor Temp
- INT69HBY supporting motor and discharge (PTC) temperature sensor protection as well as Phase Loss and Phase Reversal at Start Up Only

Ports

- External Oil Cooler
- Liquid Injection (into screw chamber)
- Economizer
- Suction, Discharge & Oil Service



Connections

		Part #	Bushing Dimensions				
Discharge Stop Valve	1 1/2"	3188-8100A					
Horizontal Discharge	1 1/2"	3188-6100EA					
Suction Stop Valve	2"	3188-8700A					
Economizer	5/8" solder	N/A					
Liquid Injection (chamber)	3/8" flare	N/A					
Discharge Bushing	Copper Pipe Sizing 1 5/8"	3101-101AB	2.05"	2.95"	1.38"	1.64"	2.05"
Suction Bushing	Copper Pipe Sizing 2 1/8"	3131-101FA	1.99"	3.54"	1.18"	2.14"	2.56"

R22, R407C, R404A, R507A, R134a

MCC & LRA

Hertz	Volts	Maximum Continuous Current	Y-Δ		Part Wind Start	
			Locked Rotor Amps (Y)	Locked Rotor Amps (D)	Locked Rotor Amps (D)	Locked Rotor Amps (DD)
60	220	142	153	460	211	440
60	460	68	80	240	113	235