



January 2025

**TB20240807**

## **Technical Bulletin**

Subject: Notice of paint material change of Hanbell compressors

For three decades, Hanbell has been using oil-based paints for both top coating and primer coating in the process of painting compressors.

Oil-based paints contain high levels of volatile organic compounds (VOCs), which are organic substances with boiling points between 50°C (122°F and 200°C (392°F). Prolonged exposure to high concentrations of VOCs can cause skin allergies, itching, and potential respiratory or digestive system diseases.

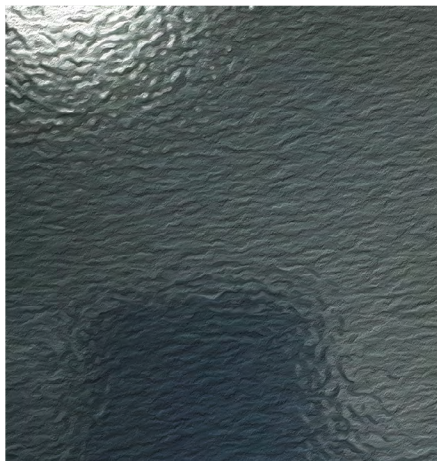
Additionally, the paint sludge produced during the manufacturing process of oil-based paints is also a source of environmental pollution.

Hanbell began, in January 2025, implemented the transition to water-based paints for all existing paint colors. The most noticeable difference in appearance with this new specification of water-based paint is the absence of the hammered paint effect as shown in Photo #1 and the smoother texture in Photo #2.

Compared to the VOC content in the original oil-based paint (36% in primers and 53% in topcoats), the VOC content in this water-based paint is significantly reduced to approximately 5%. This substantial reduction in VOC content effectively minimizes the health risks and environmental impact associated with the manufacturing process of water-based paints.

After over a year of research and testing, the Hanbell team has ensured that the specifications of this water-based paint match the original oil-based paint in terms of corrosion resistance, oil stain resistance, and durability in harsh environments (extreme temperatures and humidity). The new water-based paint maintains the same quality, hardness, and adhesion properties as the original oil-based paint.

**Current oil-base paint - Dark Blue (RAL-5008)**  
**(With hammered paint effect)**



**Future water-base paint - Dark Blue (RAL-5008)**  
**(Without hammered paint effect)**

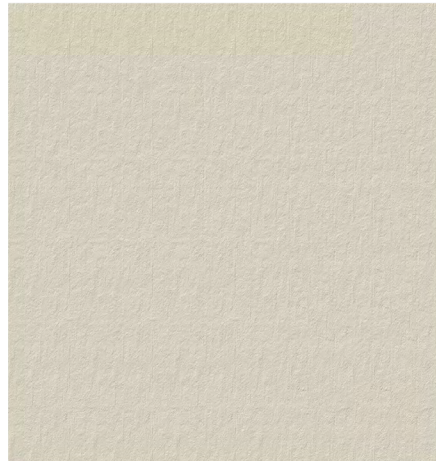




**Current oil-base paint – Off white (Panton-7534c)**  
**(With hammered paint effect)**



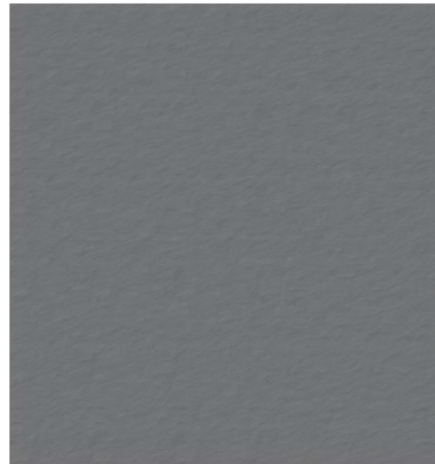
**Future water-base paint - Off white (Panton-7534c)**  
**(Without hammered paint effect)**



**Current oil-base paint - Gray (Pantone-424c)**  
**(With hammered paint effect)**



**Future water-base paint - Gray (Pantone-424c)**  
**(Without hammered paint effect)**



Due to variations in lighting and equipment during photography, there may be color discrepancies. The actual color should be considered as the final reference on compressors.

For any other questions, please feel free to contact Micro Control Systems sales if you have any questions concerning the paint used on compressors shipped from Hanbell.