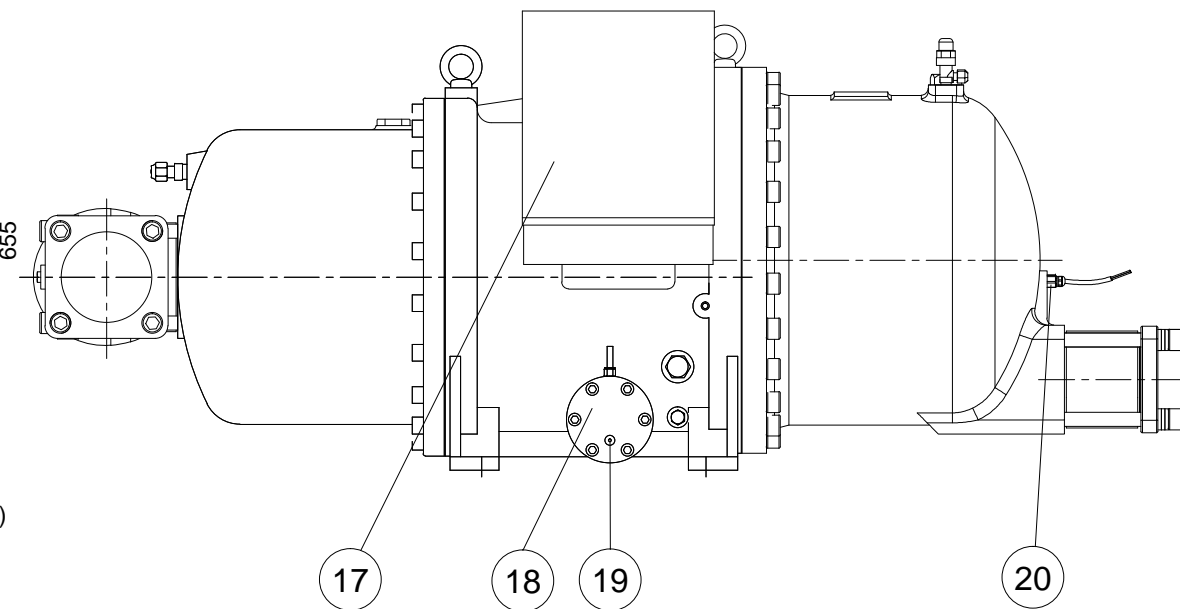
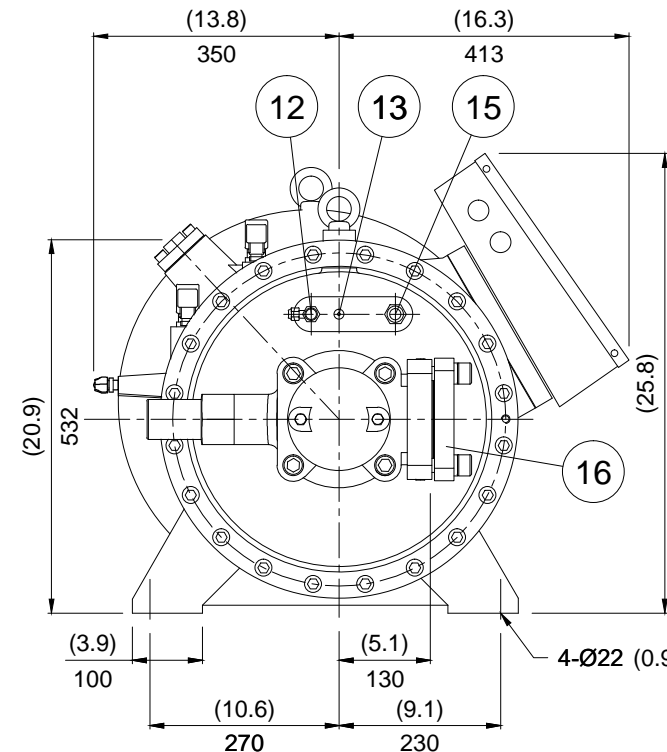
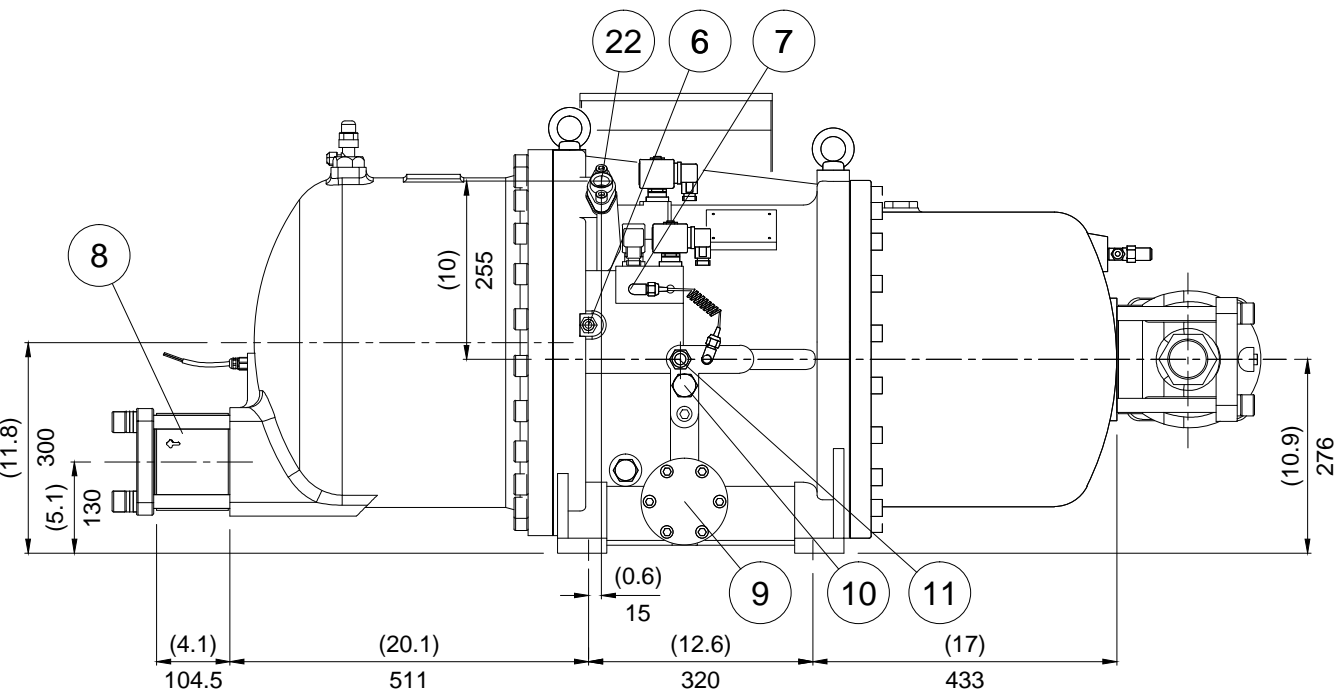


| No. | Name | Note | No. | Name | Note |
|-----|--|--------------------|-----|----------------------------|----------------------------|
| 1 | Angle valve | 1/4" Flare | 12 | Angle valve | 1/4" Flare |
| 2 | Discharge flange | 3" | 13 | Refrigerant service valve | 1/4" Flare |
| 3 | Solenoid valve | 50%(NC) | 14 | Solenoid valve | Stepless(NC or NO), Option |
| 4 | Solenoid valve | 75%(NC) | 15 | Liquid injection connector | 5/8" Flare, Option |
| 5 | Solenoid valve | 25%(NC) | 16 | Suction flange | 4" |
| 6 | Liquid(oil or refrigerant) injection connector | 3/8" Flare, Option | 17 | Cable box | Standard |
| 7 | Capillary | | 18 | Service flange | |
| 8 | Check valve | 3" | 19 | Oil drain valve | Option |
| 9 | Service flange | | 20 | Discharge temp. sensor | 110°C |
| 10 | Stop Pin | | 21 | Safety Valve | 1" NPT, Option |
| 11 | Oil inlet Connector | 5/8" Flare | 22 | Economizer port | 7/8", Solder |

***All stop valves are optional.**



| | |
|--|------------|
| Dimensional Outline Drawing & Component Description for Stepless or Modulating-Type Capacity Control Application | |
| Hanbell Model | RC2-470AF |
| Date | 06/17/2024 |
| Drawn By | ILM |



Micro Control Systems, Inc.
 5877 Enterprise Parkway
 Fort Myers, Florida 33905
 Tel. (239) 694-0089 Fax (239) 694-0031
 E-mail: compressors@mcscontrols.com

| | |
|-------|--------------------|
| Model | RC2-470AF |
| Name | Compressor outline |
| | HANBELL |
| Ver. | 05 |

UNIT
 SI: mm Imperial: (in)