



# RT-120 Centrifugal Compressor

## Specifications



<b>Compressor</b>	Two-stage with speed-up gearing		LP	HP
	Volume flow (Suction)	CFM	1579	1114
	Rated Speed	RPM	11,700	
	Inlet guide vane control		10~100% continuous	
<b>Motor</b>	Type		3 Phase, 2 Pole, Induction	
	Starting		Y-Δ Starting, Direct Starting	
	Voltage (60 Hz)		300~600	
	Insulation		Class F	
	Protection		PTC, Pt1000	
<b>Transmission</b>	Type		Helical gear	
	Lubrication		Built-in-oil pump	
	Lubricant charge	GAL	10	
Oil Heater 220V		Watts	2 x 500	
Refrigerant Heater 220V		Watts	2 x 300	
Hydrostatic pressure test	psi	313		
Dimension (LxWxH)	Inches	90" x 47" x 40.2"		
<b>Weight</b>	Pounds	7716		

\*CE marking guarantees a product's conformity to EU regulations.  
 RoHS 2 is also a CE-marking directive.

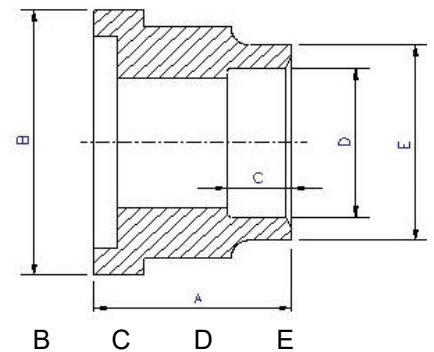
## Standard Compressors Accessories

- Two-stage centrifugal compressor
- Centrifugal compressor dedicated to R134a
- Total motor protection with PTC and Pt 1000
- Built-in oil pump for better lubrication of bearing and gears
- Reliable rigid bearings as protection against oil-deficit and surge when abrupt power cut occurs during starting
- Low oil carry-over due to double oil heaters and fine oil filters

- Precise inlet guide vane control for modulation
- Y-∇ starting, direct starting
- Two-stage with speed-up gearing
- Built in oil pump
- Vane Actuator control
- INT69HBY motor protector
- Oil drain valve

## Ports

- Economizer
- Suction, Discharge & Oil Service



## Connections

<b>Suction Flange</b>	8"					
<b>Discharge Flange</b>	6"					
<b>Economizer</b>	2 1/2" FL					
<b>Liquid Injection inlet</b>	3/4" flare	A	B	C	D	
<b>Liquid Injection outlet</b>	1 1/8" Copper	2.05"	2.95"	1.38"	1.13"	0.47"

R134a

## MCC & LRA

Model	Hertz	Volts	Maximum Continuous Current	Y-Δ
				Locked Rotor Amps
A	60	460	580	2635
B	60	460	787	3070



# RT-130 Centrifugal Compressor

## Specifications



<b>Compressor</b>	Two-stage with speed-up gearing		LP	HP
	Volume flow (Suction)	CFM	1579	1114
	Rated Speed	RPM	12,000	
	Inlet guide vane control	10~100% continuous		
<b>Motor</b>	Type	3 Phase, 2 Pole, Induction		
	Starting	Y-Δ Starting, Direct Starting		
	Voltage (60 Hz)	300~600		
	Insulation	Class F		
<b>Transmission</b>	Protection	PTC, Pt1000		
	Type	Helical gear		
	Lubrication	Built-in-oil pump		
	Lubricant charge	GAL	10	
Oil Heater 220V		Watts	2 x 500	
Refrigerant Heater 220V		Watts	2 x 300	
Hydrostatic pressure test	psi		313	
Dimension (LxWxH)	Inches		90x47x40.2	
<b>Weight</b>	Pounds		7716	

\*CE marking guarantees a product's conformity to EU regulations.  
 RoHS 2 is also a CE-marking directive.

### Standard Compressors Accessories

- Two-stage centrifugal compressor
- Centrifugal compressor dedicated to R134a
- Total motor protection with PTC and Pt 1000
- Built-in oil pump for better lubrication of bearing and gears
- Reliable rigid bearings as protection against oil-deficit and surge when abrupt power cut occurs during starting
- Low oil carry-over due to double oil heaters and fine oil filters

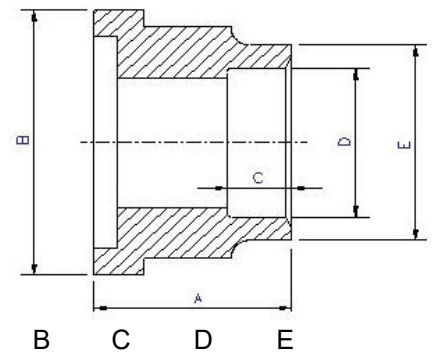
- Precise inlet guide vane control for modulation
- Y-∇ starting, direct starting
- Two-stage with speed-up gearing
- Built in oil pump
- Vane Actuator control
- INT69HBY motor protector
- Oil drain valve

### Ports

- Economizer
- Suction, Discharge & Oil Service

### Connections

<b>Suction Flange</b>	8"				
<b>Discharge Flange</b>	6"				
<b>Economizer</b>	2 1/2" FL				
<b>Liquid Injection inlet</b>	3/4" flare	A	B	C	D
<b>Liquid Injection outlet</b>	1 1/8" Copper	2.05"	2.95"	1.38"	1.13"
			0.47"	E	



R134a

### MCC & LRA

Model	Hertz	Volts	Maximum Continuous Current	Y-Δ
				Locked Rotor Amps
A	60	460	670	3263
B	60	460	907	4517



# RT-140 Centrifugal Compressor

## Specifications



Compressor	Two-stage with speed-up gearing		LP	HP
	Volume flow (Suction)	CFM	1596	1150
Rated Speed	RPM		12,000	
Inlet guide vane control			10~100% continuous	
Motor	Type		3 Phase, 2 Pole, Induction	
	Starting		Y-Δ Starting, Direct Starting	
	Voltage (60 Hz)		300~600	
	Insulation		Class F	
Transmission	Protection		PTC, Pt1000	
	Type		Helical gear	
	Lubrication		Built-in-oil pump	
Lubricant charge	GAL		10	
Oil Heater 220V		Watts	2 x 500	
Refrigerant Heater 220V		Watts	2 x 300	
Hydrostatic pressure test	psi		313	
Dimension (LxWxH)	Inches		90x47x40.2	
Weight	Pounds		7716	

\*CE marking guarantees a product's conformity to EU regulations.  
 RoHS 2 is also a CE-marking directive.

### Standard Compressors Accessories

- Two-stage centrifugal compressor
- Centrifugal compressor dedicated to R134a
- Total motor protection with PTC and Pt 1000
- Built-in oil pump for better lubrication of bearing and gears
- Reliable rigid bearings as protection against oil-deficit and surge when abrupt power cut occurs during starting
- Low oil carry-over due to double oil heaters and fine oil filters

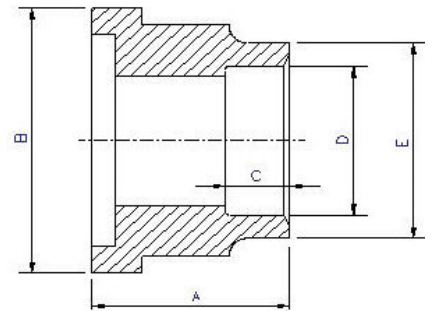
- Precise inlet guide vane control for modulation
- Y-∇ starting, direct starting
- Two-stage with speed-up gearing
- Built in oil pump
- Vane Actuator control
- INT69HBY motor protector
- Oil drain valve

### Ports

- Economizer
- Suction, Discharge & Oil Service

### Connections

Suction Flange	8"				
Discharge Flange	6"				
Economizer	2 1/2" FL				
Liquid Injection inlet	3/4" flare				
Liquid Injection outlet	1 1/8" Copper	2.05"	2.95"	1.38"	1.13"
		0.47"			



R134a

### MCC & LRA

Model	Hertz	Volts	Maximum Continuous Current	Y-Δ
				Locked Rotor Amps
A	60	460	670	3263
B	60	460	907	4517



# RT-160 Centrifugal Compressor

## Specifications



<b>Compressor</b>	Two-stage with speed-up gearing		LP	HP
	Volume flow (Suction)	CFM	1937	1366
	Rated Speed	RPM	9,400	
	Inlet guide vane control	10~100% continuous		
<b>Motor</b>	Type	3 Phase, 2 Pole, Induction		
	Starting	Y-Δ Starting, Direct Starting		
	Voltage (60 Hz)	300~600		
	Insulation	Class F		
<b>Transmission</b>	Protection	PTC, Pt1000		
	Type	Helical gear		
	Lubrication	Built-in-oil pump		
	Lubricant charge	GAL	10	
Oil Heater 220V		Watts	2 x 500	
Refrigerant Heater 220V		Watts	2 x 300	
Hydrostatic pressure test	psi		313	
Dimension (LxWxH)	Inches		103" x 50.8" x 50"	
Weight	Pounds		9920	

\*CE marking guarantees a product's conformity to EU regulations.  
 RoHS 2 is also a CE-marking directive.

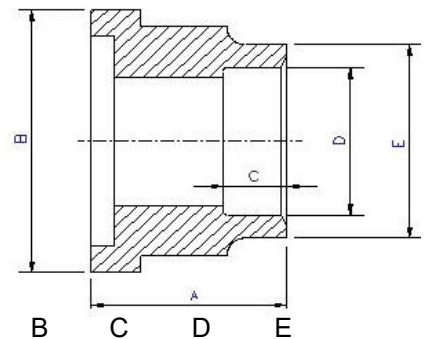
### Standard Compressors Accessories

- Two-stage centrifugal compressor
- Centrifugal compressor dedicated to R134a
- Total motor protection with PTC and Pt 1000
- Built-in oil pump for better lubrication of bearing and gears
- Reliable rigid bearings as protection against oil-deficit and surge when abrupt power cut occurs during starting
- Low oil carry-over due to double oil heaters and fine oil filters

- Precise inlet guide vane control for modulation
- Y-∇ starting, direct starting
- Two-stage with speed-up gearing
- Built in oil pump
- Vane Actuator control
- INT69HBYmotor protector
- Oil drain valve

### Ports

- Economizer
- Suction, Discharge & Oil Service



### Connections

<b>Suction Flange</b>	12"				
<b>Discharge Flange</b>	8"				
<b>Economizer</b>	4" FL				
<b>Liquid Injection inlet</b>	7/8" Copper	2.05"	2.36"	1/38"	0.89
<b>Liquid Injection outlet</b>	1 5/8" Copper	2.05"	2.95"	1.38"	1.64"

R134a

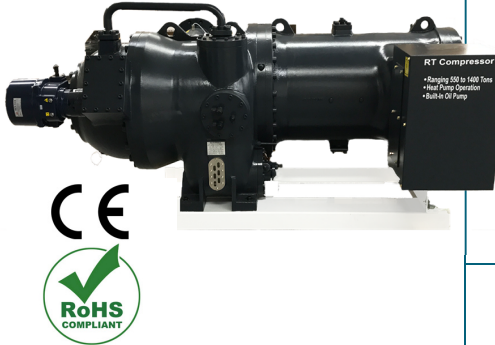
### MCC & LRA

Model	Hertz	Volts	Maximum Continuous Current	Y-Δ
				Locked Rotor Amps
A	60	460	787	3070
B	60	460	981	5526



# RT-180 Centrifugal Compressor

## Specifications



<b>Compressor</b>	Two-stage with speed-up gearing		LP	HP
	Volume flow (Suction)	CFM	2227	1571
	Rated Speed	RPM	8,900	
	Inlet guide vane control		10~100% continuous	
<b>Motor</b>	Type		3 Phase, 2 Pole, Induction	
	Starting		Y-Δ Starting, Direct Starting	
	Voltage (60 Hz)		300~600	
	Insulation		Class F	
<b>Transmission</b>	Protection		PTC, Pt1000	
	Type		Helical gear	
	Lubrication		Built-in-oil pump	
	Lubricant charge	GAL	10	
Oil Heater 220V		Watts	2 x 500	
Refrigerant Heater 220V		Watts	2 x 300	
Hydrostatic pressure test		psi	313	
Dimension (LxWxH)		Inches	103" x 50.8" x 50"	
Weight		Pounds	9920	

\*CE marking guarantees a product's conformity to EU regulations.  
 RoHS 2 is also a CE-marking directive.

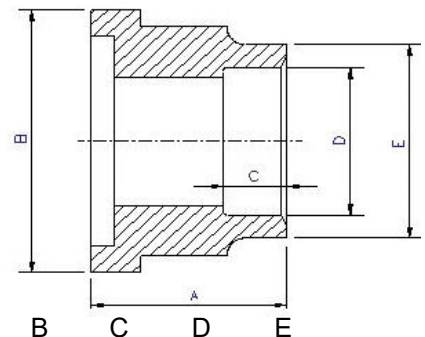
### Standard Compressors Accessories

- Two-stage centrifugal compressor
- Centrifugal compressor dedicated to R134a
- Total motor protection with PTC and Pt 1000
- Built-in oil pump for better lubrication of bearing and gears
- Reliable rigid bearings as protection against oil-deficit and surge when abrupt power cut occurs during starting
- Low oil carry-over due to double oil heaters and fine oil filters

- Precise inlet guide vane control for modulation
- Y-∇ starting, direct starting
- Two-stage with speed-up gearing
- Built in oil pump
- Vane Actuator control
- INT69HBYmotor protector
- Oil drain valve

### Ports

- Economizer
- Suction, Discharge & Oil Service



### Connections

<b>Suction Flange</b>	12"				
<b>Discharge Flange</b>	8"				
<b>Economizer</b>	4" FL	A	B	C	D
<b>Liquid Injection inlet</b>	7/8" Copper	2.05"	2.36"	1/38"	0.89
<b>Liquid Injection outlet</b>	1 5/8" Copper	2.05"	2.95"	1.38"	1.64"

R134a

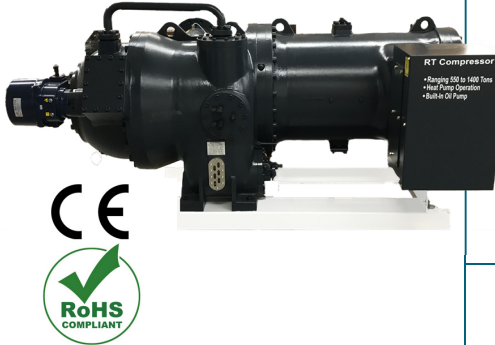
### MCC & LRA

Model	Hertz	Volts	Maximum Continuous Current	Y-Δ
				Locked Rotor Amps
A	60	460	907	4517
B	60	460	1180	4214



# RT-200 Centrifugal Compressor

## Specifications



<b>Compressor</b>	Two-stage with speed-up gearing		LP	HP
	Volume flow (Suction)	CFM	2396	1690
	Rated Speed	RPM	8,900	
	Inlet guide vane control		10~100% continuous	
<b>Motor</b>	Type		3 Phase, 2 Pole, Induction	
	Starting		Y-Δ Starting, Direct Starting	
	Voltage (60 Hz)		300~600	
	Insulation		Class F	
<b>Transmission</b>	Protection		PTC, Pt1000	
	Type		Helical gear	
	Lubrication		Built-in-oil pump	
	Lubricant charge	GAL	10	
Oil Heater 220V		Watts	2 x 500	
Refrigerant Heater 220V		Watts	2 x 300	
Hydrostatic pressure test	psi		313	
Dimension (LxWxH)	Inches		103" x 50.8" x 50"	
Weight	Pounds		9920	

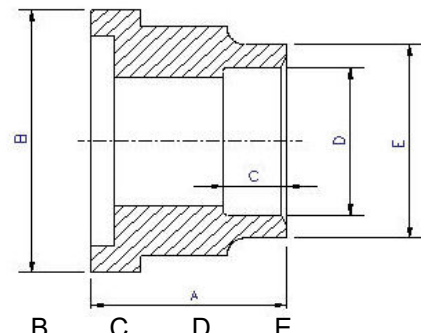
\*CE marking guarantees a product's conformity to EU regulations.  
 RoHS 2 is also a CE-marking directive.

## Standard Compressors Accessories

- Two-stage centrifugal compressor
- Centrifugal compressor dedicated to R134a
- Total motor protection with PTC and Pt 1000
- Built-in oil pump for better lubrication of bearing and gears
- Reliable rigid bearings as protection against oil-deficit and surge when abrupt power cut occurs during starting
- Low oil carry-over due to double oil heaters and fine oil filters
- Precise inlet guide vane control for modulation
- Y-∇ starting, direct starting
- Two-stage with speed-up gearing
- Built in oil pump
- Vane Actuator control
- INT69HBY motor protector
- Oil drain valve

## Ports

- Economizer
- Suction, Discharge & Oil Service



## Connections

<b>Suction Flange</b>	12"				
<b>Discharge Flange</b>	8"				
<b>Economizer</b>	4" FL	A	B	C	D
<b>Liquid Injection inlet</b>	7/8" Copper	2.05"	2.36"	1/38"	0.89
<b>Liquid Injection outlet</b>	1 5/8" Copper	2.05"	2.95"	1.38"	1.64"

R134a

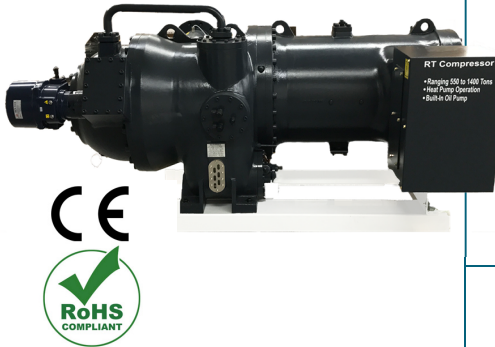
## MCC & LRA

Model	Hertz	Volts	Maximum Continuous Current	Y-Δ
				Locked Rotor Amps
A	60	460	981	5526
B	60	460	1357	6534



# RT-221 Centrifugal Compressor

## Specifications



Compressor	Two-stage with speed-up gearing		LP	HP
	Volume flow (Suction)	CFM	2387	1525
Rated Speed	RPM	9.400		
Inlet guide vane control	10~100% continuous			
Motor	Type	3 Phase, 2 Pole, Induction		
	Starting	Y-Δ Starting, Direct Starting		
	Voltage (60 Hz)	300~600		
	Insulation	Class F		
Transmission	Protection	PTC, Pt1000		
	Type	Helical gear		
	Lubrication	Built-in-oil pump		
Lubricant charge	GAL	10		
Oil Heater 220V	Watts	2 x 500		
Refrigerant Heater 220V	Watts	2 x 300		
Hydrostatic pressure test	psi	313		
Dimension (LxWxH)	Inches	102" x 51.18" x 47.24"		
Weight	Pounds	9920		

\*CE marking guarantees a product's conformity to EU regulations.  
 RoHS 2 is also a CE-marking directive.

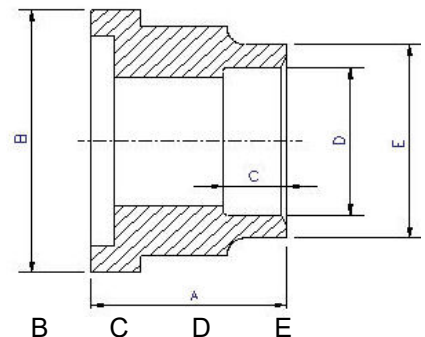
## Standard Compressors Accessories

- Two-stage centrifugal compressor
- Centrifugal compressor dedicated to R134a
- Total motor protection with PTC and Pt 1000
- Built-in oil pump for better lubrication of bearing and gears
- Reliable rigid bearings as protection against oil-deficit and surge when abrupt power cut occurs during starting
- Low oil carry-over due to double oil heaters and fine oil filters

- Precise inlet guide vane control for modulation
- Y-∇ starting, direct starting
- Two-stage with speed-up gearing
- Built in oil pump
- Vane Actuator control
- INT69HBYmotor protector
- Oil drain valve

## Ports

- Economizer
- Suction, Discharge & Oil Service



## Connections

Suction Flange	12"				
Discharge Flange	8"				
Economizer	4" FL	A	B	C	D
Liquid Injection inlet	7/8" Copper	2.05"	2.36"	1/38"	0.89
Liquid Injection outlet	1 5/8" Copper	2.05"	2.95"	1.38"	1.64"

R134a

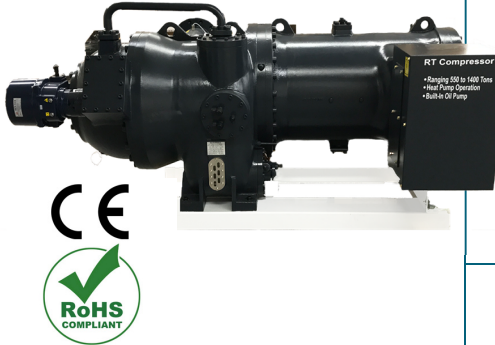
## MCC & LRA

Model	Hertz	Volts	Maximum Continuous Current	Y-Δ
				Locked Rotor Amps
A	60	460	1357	6534
B	60	460	1678	7903



# RT-240 Centrifugal Compressor

## Specifications



Compressor	Two-stage with speed-up gearing		LP	HP
	Volume flow (Suction)	CFM	2903	2048
Rated Speed	RPM	8,200		
Inlet guide vane control	10~100% continuous			
Motor	Type	3 Phase, 2 Pole, Induction		
	Starting	Y-Δ Starting, Direct Starting		
	Voltage (60 Hz)	300~600		
	Insulation	Class F		
Transmission	Protection	PTC, Pt1000		
	Type	Helical gear		
	Lubrication	Built-in-oil pump		
Lubricant charge	GAL	10		
Oil Heater 220V	Watts	2 x 500		
Refrigerant Heater 220V	Watts	2 x 300		
Hydrostatic pressure test	psi	313		
Dimension (LxWxH)	Inches	102.36" x 51.18" x 47.24"		
Weight	Pounds	9920		

\*CE marking guarantees a product's conformity to EU regulations.  
 RoHS 2 is also a CE-marking directive.

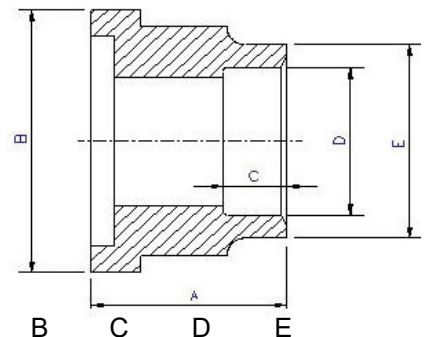
## Standard Compressors Accessories

- Two-stage centrifugal compressor
- Centrifugal compressor dedicated to R134a
- Total motor protection with PTC and Pt 1000
- Built-in oil pump for better lubrication of bearing and gears
- Reliable rigid bearings as protection against oil-deficit and surge when abrupt power cut occurs during starting
- Low oil carry-over due to double oil heaters and fine oil filters

- Precise inlet guide vane control for modulation
- Y-∇ starting, direct starting
- Two-stage with speed-up gearing
- Built in oil pump
- Vane Actuator control
- INT69HBYmotor protector
- Oil drain valve

## Ports

- Economizer
- Suction, Discharge & Oil Service



## Connections

Suction Flange	12"				
Discharge Flange	8"				
Economizer	4" FL				
Liquid Injection inlet	7/8" Copper	2.05"	2.36"	1/38"	0.89
Liquid Injection outlet	1 5/8" Copper	2.05"	2.95"	1.38"	1.64"

R134a

## MCC & LRA

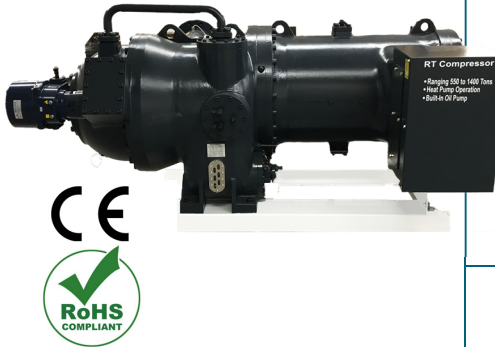
Model	Hertz	Volts	Maximum Continuous Current	Y-Δ
				Locked Rotor Amps
A	60	460	1180	4214
B	60	460	1536	7338





# RT-260 Centrifugal Compressor

## Specifications



		Two-stage with speed-up gearing	LP	HP
<b>Compressor</b>	Volume flow (Suction)	CFM	3179	2242
	Rated Speed	RPM	8,200	
	Inlet guide vane control		10~100% continuous	
	Type		3 Phase, 2 Pole, Induction	
<b>Motor</b>	Starting		Y-Δ Starting, Direct Starting	
	Voltage (60 Hz)		300~600	
	Insulation		Class F	
	Protection		PTC, Pt1000	
<b>Transmission</b>	Type		Helical gear	
	Lubrication		Built-in-oil pump	
	Lubricant charge	GAL	10	
Oil Heater 220V		Watts	2 x 500	
Refrigerant Heater 220V		Watts	2 x 300	
Hydrostatic pressure test	psi		313	
Dimension (LxWxH)	Inches		102.36" x 51.18" x 47.24"	
Weight	Pounds		9920	

\*CE marking guarantees a product's conformity to EU regulations.  
 RoHS 2 is also a CE-marking directive.

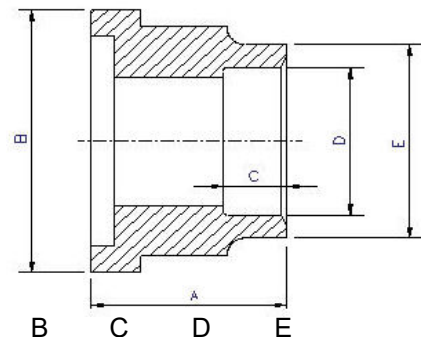
## Standard Compressors Accessories

- Two-stage centrifugal compressor
- Centrifugal compressor dedicated to R134a
- Total motor protection with PTC and Pt 1000
- Built-in oil pump for better lubrication of bearing and gears
- Reliable rigid bearings as protection against oil-deficit and surge when abrupt power cut occurs during starting
- Low oil carry-over due to double oil heaters and fine oil filters

- Precise inlet guide vane control for modulation
- Y-∇ starting, direct starting
- Two-stage with speed-up gearing
- Built in oil pump
- Vane Actuator control
- INT69HBY motor protector
- Oil drain valve

## Ports

- Economizer
- Suction, Discharge & Oil Service



## Connections

<b>Suction Flange</b>	12"				
<b>Discharge Flange</b>	8"				
<b>Economizer</b>	4" FL	A	B	C	D
<b>Liquid Injection inlet</b>	7/8" Copper	2.05"	2.36"	1/38"	0.89
<b>Liquid Injection outlet</b>	1 5/8" Copper	2.05"	2.95"	1.38"	1.64"

R134a

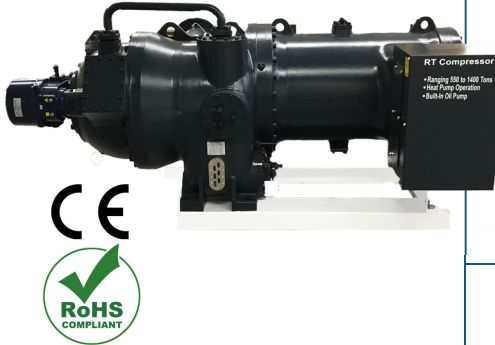
## MCC & LRA

Model	Hertz	Volts	Maximum Continuous Current	Y-Δ
				Locked Rotor Amps
A	60	460	1357	6534
B	60	460	1678	7903



# RT-280 Centrifugal Compressor

## Specifications



Compressor	Two-stage with speed-up gearing		LP	HP
	Volume flow (Suction)	CFM	3179	2242
Rated Speed	RPM	8,200		
Inlet guide vane control	10~100% continuous			
Motor	Type	3 Phase, 2 Pole, Induction		
	Starting	Y-Δ Starting, Direct Starting		
	Voltage (60 Hz)	300~600		
	Insulation	Class F		
Transmission	Protection	PTC, Pt1000		
	Type	Helical gear		
	Lubrication	Built-in-oil pump		
Lubricant charge	GAL	10		
Oil Heater 220V	Watts	2 x 500		
Refrigerant Heater 220V	Watts	2 x 300		
Hydrostatic pressure test	psi	313		
Dimension (LxWxH)	Inches	102.36" x 51.18" x 47.24"		
Weight	Pounds	9920		

\*CE marking guarantees a product's conformity to EU regulations.  
 RoHS 2 is also a CE-marking directive.

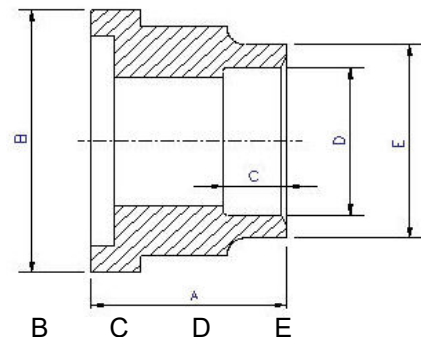
## Standard Compressors Accessories

- Two-stage centrifugal compressor
- Centrifugal compressor dedicated to R134a
- Total motor protection with PTC and Pt 1000
- Built-in oil pump for better lubrication of bearing and gears
- Reliable rigid bearings as protection against oil-deficit and surge when abrupt power cut occurs during starting
- Low oil carry-over due to double oil heaters and fine oil filters

- Precise inlet guide vane control for modulation
- Y-∇ starting, direct starting
- Two-stage with speed-up gearing
- Built in oil pump
- Vane Actuator control
- INT69HBYmotor protector
- Oil drain valve

## Ports

- Economizer
- Suction, Discharge & Oil Service



## Connections

Suction Flange	12"				
Discharge Flange	8"				
Economizer	4" FL	A	B	C	D
Liquid Injection inlet	7/8" Copper	2.05"	2.36"	1/38"	0.89
Liquid Injection outlet	1 5/8" Copper	2.05"	2.95"	1.38"	1.64"

R134a

## MCC & LRA

Model	Hertz	Volts	Maximum Continuous Current	Y-Δ
				Locked Rotor Amps
A	60	460	1357	6534
B	60	460	1678	7903