



# RG-200 Open Drive Screw Compressor

## Specifications



<b>Compressor</b>	Displacement	CFM	60 Hz	111
	Rated Speed	Rpm	Max	4500
	Rated Speed	Rpm	Min	1500
	Number of lobes per Rotor MR/FR			5/6
	Volume Ratio	Adjustable VI		2.6 ~ 5.1
	Capacity Control	%		25%,50%,75% & 100% Step Capacity Control, 50%~100% Continuous Stepless Capacity Controls
	Sound Pressure Level*	dB(A)		86
<b>Lubricant Charge using External Oil Separator</b>			Oil Volume (gallons or Litter) based on displacement (cfm)	
<b>Design Pressure</b>	lb/in <sup>2</sup> G (kg/cm <sup>2</sup> )		398 / 28	
<b>Weight</b>	Pounds		511	

\*1. Sound pressure level is based on ISO-2151, R22, 50 Hz, SST -30°C/SCT 40°C to be measured.

2. ±2 dB(A) tolerance of sound pressure level is expected due to difference in operating conditions and motor noise conditions.

## Standard Compressors Accessories

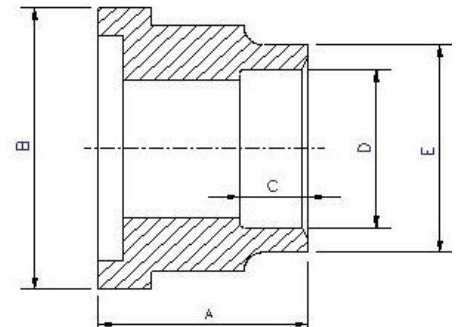
- Multiple spring type mechanical seal which ensures even loading of seal surface
- Discharge temperature thermistor for compressor protection
- Capacity indicator
- Modulating Slide Capacity
- Discharge Check Valve
- Discharge Service Valve (Discharge Stop Valve) with standard connection sizes and supplied with flanges and bushings
- Suction Check Valve
- Suction Service Valve (Suction Stop Valves) with standard connection sizes and supplied with flanges and bushings

## Ports

- Suction Filter
- Flanged-on motor mounting available
- Oil Inlet
- Liquid Injection (into screw chamber)
- Economizer
- Suction, Discharge & Oil Service

## Connections

<b>Discharge Stop Valve</b>	2"					
<b>Discharge Check Valve</b>	2"					
<b>Suction Stop Valve</b>	3"					
<b>Oil Inlet</b>	1 1/8" ODF					
<b>Economizer</b>	7/8" ODF					
<b>Liquid Injection (chamber)</b>	5/8" ODF					
		<b>A</b>	<b>B</b>	<b>C</b>	<b>D</b>	<b>E</b>
<b>Discharge Side</b>	Copper Pipe Sizing 2 1/8"	1.97"	3.54"	1.18"	2.14"	2.56"
<b>Suction Side</b>	Copper Pipe Sizing 3 1/8"	2.60"	4.72"	1.77"	3.14"	3.54"





# RG-410 Open Drive Screw Compressor

## Specifications



<b>Compressor</b>	Displacement	CFM	60 Hz	236
	Rated Speed	Rpm	Max	4500
	Rated Speed	Rpm	Min	1500
	Number of lobes per Rotor MR/FR			5/6
	Volume Ratio	Adjustable VI		2.6 ~ 5.1
	Capacity Control	%		25%,50%,75% & 100% Step Capacity Control, 50%~100% Continuous Stepless Capacity Controls
	Sound Pressure Level*	dB(A)		88
<b>Lubricant Charge using</b>		Oil Volume (gallons or Litter)		
<b>Design Pressure</b>	lb/in <sup>2</sup> G (kg/cm <sup>2</sup> )	398 / 28		
<b>Weight</b>	Pounds	705		

\*1. Sound pressure level is based on ISO-2151, R22, 50 Hz, SST -30°C/SCT 40°C to be measured.

2. ±2 dB(A) tolerance of sound pressure level is expected due to difference in operating conditions and motor noise conditions.

## Standard Compressors Accessories

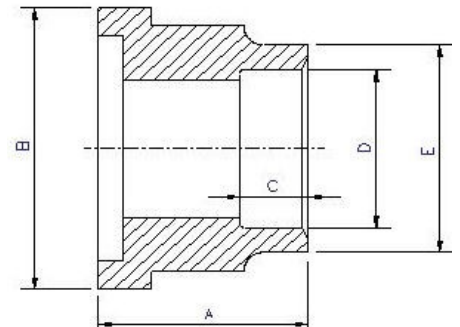
- Multiple spring type mechanical seal which ensures even loading of seal surface
- Discharge temperature thermistor for compressor protection
- Capacity indicator
- Modulating Slide Capacity
- Discharge Check Valve
- Discharge Service Valve (Discharge Stop Valve) with standard connection sizes and supplied with flanges and bushings
- Suction Check Valve
- Suction Service Valve (Suction Stop Valves) with standard connection sizes and supplied with flanges and bushings

## Ports

- Suction Filter
- Flanged-on motor mounting available
- Oil Inlet
- Liquid Injection (into screw chamber)
- Economizer
- Suction, Discharge & Oil Service

## Connections

<b>Discharge Stop Valve</b>	2 1/2"				
<b>Discharge Check Valve</b>	2 1/2"				
<b>Suction Stop Valve</b>	4"				
<b>Oil Inlet</b>	1 1/8" ODF				
<b>Economizer</b>	1 1/8" ODF				
<b>Liquid Injection (chamber)</b>	5/8" ODF				
		<b>A</b>	<b>B</b>	<b>C</b>	<b>D</b>
<b>Discharge Side</b>	Copper Pipe Sizing 2 5/8"	2.36"	4.33"	1.38"	2.63"
<b>Suction Side</b>	Copper Pipe Sizing 4 1/8"	2.99"	5.71"	1.97"	4.57"





# RG-620 Open Drive Screw Compressor

## Specifications



<b>Compressor</b>	Displacement	CFM	60 Hz	364
	Rated Speed	Rpm	Max	4500
	Rated Speed	Rpm	Min	1500
	Number of lobes per Rotor MR/FR			5/6
	Volume Ratio	Adjustable VI		2.6 ~ 5.1
	Capacity Control	%		25%,50%,75% & 100% Step Capacity Control, 50%~100% Continuous Stepless Capacity Controls
	Sound Pressure Level*	dB(A)		89
<b>Lubricant Charge using External Oil Separator</b>			Oil Volume (gallons or Litter) based on displacement (cfm)	
<b>Design Pressure</b>	lb/in <sup>2</sup> G (kg/cm <sup>2</sup> )		398 / 28	
<b>Weight</b>	Pounds		1047	

\*1. Sound pressure level is based on ISO-2151, R22, 50 Hz, SST -30°C/SCT 40°C to be measured.

2. ±2 dB(A) tolerance of sound pressure level is expected due to difference in operating conditions and motor noise conditions.

## Standard Compressors Accessories

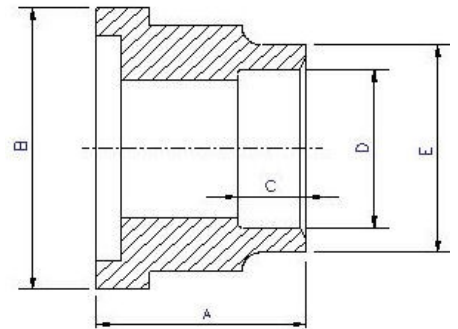
- Multiple spring type mechanical seal which ensures even loading of seal surface
- Discharge temperature thermistor for compressor protection
- Capacity indicator
- Modulating Slide Capacity
- Discharge Check Valve
- Discharge Service Valve (Discharge Stop Valve) with standard connection sizes and supplied with flanges and bushings
- Suction Check Valve
- Suction Service Valve (Suction Stop Valves) with standard connection sizes and supplied with flanges and bushings

## Ports

- Suction Filter
- Flanged-on motor mounting available
- Oil Inlet
- Liquid Injection (into screw chamber)
- Economizer
- Suction, Discharge & Oil Service

## Connections

<b>Discharge Stop Valve</b>	2"				
<b>Discharge Check Valve</b>	3"				
<b>Suction Stop Valve</b>	5"				
<b>Oil Inlet</b>	1 1/8" ODF				
<b>Economizer</b>	7/8" ODF				
<b>Liquid Injection (chamber)</b>	5/8" ODF				
		<b>A</b>	<b>B</b>	<b>C</b>	<b>D</b>
<b>Discharge Side</b>	Copper Pipe Sizing 2 1/8"	1.97"	3.54"	1.18"	2.14"
<b>Suction Side</b>	Copper Pipe Sizing 3 1/8"	2.60"	4.72"	1.77"	3.14"





# RG-830 Open Drive Screw Compressor

## Specifications



<b>Compressor</b>	Displacement	CFM	60 Hz	480
	Rated Speed	Rpm	Max	4500
	Rated Speed	Rpm	Min	1500
	Number of lobes per Rotor MR/FR			5/6
	Volume Ratio	Adjustable VI		2.6 ~ 5.1
	Capacity Control	%		25%,50%,75% & 100% Step Capacity Control, 50%~100% Continuous Stepless Capacity Controls
	Sound Pressure Level*	dB(A)		90
<b>Lubricant Charge using External Oil Separator</b>			Oil Volume (gallons or Litter) based on displacement (cfm)	
<b>Design Pressure</b>	lb/in <sup>2</sup> G (kg/cm <sup>2</sup> )		398 / 28	
<b>Weight</b>	Pounds		1131	

\*1. Sound pressure level is based on ISO-2151, R22, 50 Hz, SST -30°C/SCT 40°C to be measured.

2. ±2 dB(A) tolerance of sound pressure level is expected due to difference in operating conditions and motor noise conditions.

## Standard Compressors Accessories

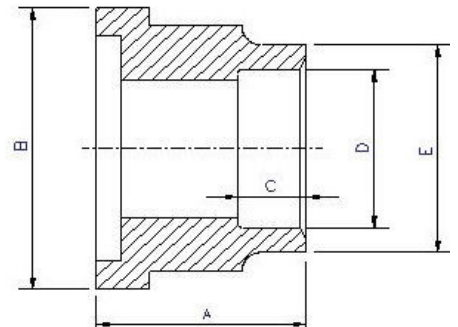
- Multiple spring type mechanical seal which ensures even loading of seal surface
- Discharge temperature thermistor for compressor protection
- Capacity indicator
- Modulating Slide Capacity
- Discharge Check Valve
- Discharge Service Valve (Discharge Stop Valve) with standard connection sizes and supplied with flanges and bushings
- Suction Check Valve
- Suction Service Valve (Suction Stop Valves) with standard connection sizes and supplied with flanges and bushings

## Ports

- Suction Filter
- Flanged-on motor mounting available
- Oil Inlet
- Liquid Injection (into screw chamber)
- Economizer
- Suction, Discharge & Oil Service

## Connections

<b>Discharge Stop Valve</b>	4"				
<b>Discharge Check Valve</b>	4"				
<b>Suction Stop Valve</b>	5"				
<b>Oil Inlet</b>	1 1/8" ODF				
<b>Economizer</b>	1 1/8" ODF				
<b>Liquid Injection (chamber)</b>	5/8" ODF				
		<b>A</b>	<b>B</b>	<b>C</b>	<b>D</b>
<b>Discharge Side</b>	Copper Pipe Sizing 4 1/8"	3"	5.71"	1.97"	4.14"
<b>Suction Side</b>	Copper Pipe Sizing 5 1/8"	2.95"	6.8"	1.38"	5.14"





# RC2-1090 Open Drive Screw Compressor

## Specifications

<b>Compressor</b>	Displacement	CFM	60 Hz	641
	Rated Speed	Rpm	Max	3600
	Rated Speed	Rpm	Min	1500
	Number of lobes per Rotor MR/FR			5/6
	Volume Ratio			2.6 ~ 5.1
	Capacity Control	%		25%,50%,75% & 100% Step Capacity Control, 25%~100% Continuous Stepless Capacity Controls
	Sound Pressure Level*		dB(A)	90
<b>Lubricant Charge</b>	Gallons			
<b>Oil Heater</b>	Watts			
<b>Hydrostatic Pressure test</b>	lb/in <sup>2</sup> G			
<b>Weight</b>	Pounds			
<b>Crated Weight</b>	Pounds			
<b>Crate Dimensions</b>	Inches			

### Standard Compressors Accessories

- Multiple spring type mechanical seal which ensures even loading of seal surface
- Discharge temperature thermistor for compressor protection
- Capacity indicator
- Modulating Slide Capacity
- Discharge Check Valve
- Discharge Service Valve (Discharge Stop Valve) with standard connection sizes and supplied with flanges and bushings
- Suction Service Valve (Suction Stop Valves) with standard connection sizes and supplied with flanges and bushings
- Suction Filter
- Flanged-on motor mounting available

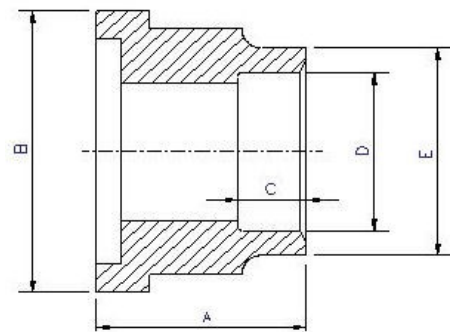
### Ports

- Liquid Injection (into screw chamber)
- Economizer
- Suction, Discharge & Oil Service

- Oil Inlet

### Connections

<b>Discharge Stop Valve</b>	4"
<b>Discharge Check Valve</b>	4"
<b>Suction Stop Valve</b>	5"
<b>Oil Inlet</b>	1 1/8" ODF
<b>Economizer</b>	11/8" ODF
<b>Liquid Injection (chamber)</b>	5/8" ODF
<b>Discharge Side</b>	Copper Pipe Sizing 4 1/8"
<b>Suction Side</b>	Copper Pipe Sizing 5 1/8"



	A	B	C	D	E
<b>Discharge Side</b>	2.99"	5.71"	1.97"	4.14"	4.56"
<b>Suction Side</b>	2.95"	6.85"	1.38"	5.14"	5.77"

\*1. Sound pressure level is based on ISO-2151, R22, 50 Hz, SST -30°C/SCT 40°C to be measured.

2. ±2 dB(A) tolerance of sound pressure level is expected due to difference in operating conditions and motor noise conditions.





# RG-1270 Open Drive Screw Compressor

## Specifications



<b>Compressor</b>	Displacement	CFM	60 Hz	746
	Rated Speed	Rpm	Max	3600
	Rated Speed	Rpm	Min	1500
	Number of lobes per Rotor MR/FR			5/6
	Volume Ratio	Adjustable VI		2.6 ~ 5.1
	Capacity Control	%		25%,50%,75% & 100% Step Capacity Control, 50%~100% Continuous Stepless Capacity Controls
	Sound Pressure Level*	dB(A)		93
<b>Lubricant Charge using External Oil Separator</b>			Oil Volume (gallons or Litter) based on displacement (cfm)	
<b>Design Pressure</b>	lb/in <sup>2</sup> G (kg/cm <sup>2</sup> )		398 / 28	
<b>Weight</b>	Pounds		2570	

\*1. Sound pressure level is based on ISO-2151, R22, 50 Hz, SST -30°C/SCT 40°C to be measured.

2. ±2 dB(A) tolerance of sound pressure level is expected due to difference in operating conditions and motor noise conditions.

## Standard Compressors Accessories

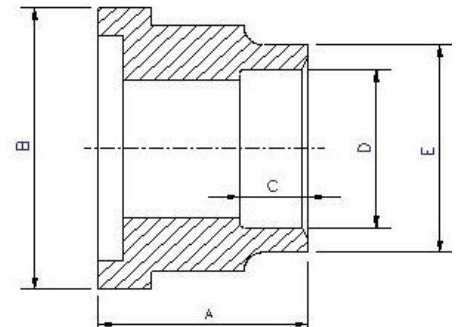
- Multiple spring type mechanical seal which ensures even loading of seal surface
- Discharge temperature thermistor for compressor protection
- Capacity indicator
- Modulating Slide Capacity
- Discharge Check Valve
- Discharge Service Valve (Discharge Stop Valve) with standard connection sizes and supplied with flanges and bushings
- Suction Check Valve
- Suction Service Valve (Suction Stop Valves) with standard connection sizes and supplied with flanges and bushings

## Ports

- Suction Filter
- Flanged-on motor mounting available
- Oil Inlet
- Liquid Injection (into screw chamber)
- Economizer
- Suction, Discharge & Oil Service

## Connections

<b>Discharge Stop Valve</b>	6"					
<b>Discharge Check Valve</b>	6"					
<b>Suction Stop Valve</b>	8"					
<b>Oil Inlet</b>	1 1/8" ODF					
<b>Economizer</b>	1 1/2" ODF					
<b>Liquid Injection (chamber)</b>	1 1/8" ODF					
<b>Discharge Side</b>	Steel Pipe Sizing 6"	2.95"	8.46"	1.57"	6.56"	7.16"
<b>Suction Side</b>	Steel Pipe Sizing 8"	2.95"	10.23"	1.57"	8.58"	9.49"



A B C D E