



RC2-100-ExP Screw Compressor Models A&B

Specifications



* Ex II 2 G Ex d IIB T4 Gb (Electrical parts)
 II 2 G c IIB T4 (Non-Electrical parts)

New explosion proof design Screw compressor dedicated to HFC, HCFC & flammable gases.
 Used in explosive atmospheres.

Compressor	Displacement	CFM	60 Hz	69
	Rated Speed	Rpm	60 Hz	3550
	Volume Ratio	Vi		2.6 (standard other Vi available)
	Capacity Control	%		33%, 66% & 100% Step Capacity Control, 50%~100% Continuous Stepless Capacity Controls
	Lubrication	Differential Pressure Feed Lubricant		
Motor	Type	3 phase, 2 pole, squirrel cage, induction motor		
	Starting	Y-Delta, PWS		
	Voltage	208, 220, 230, 380, 440, 460, 480, 575		
	Nominal HP	23 RC2-100A		
	Nominal HP	38 RC2-100B		
Lubricant Charge	Gallons	1.9		
Oil Heater	Watts	150W		
Hydrostatic Pressure Test	lb/in ² G	597		
Weight	Pounds	617 Comp. (skid 50x26x31 - Crated weight 816)		

Standard Compressors Accessories

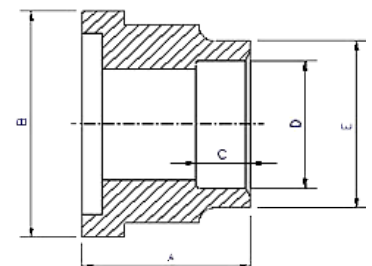
- Available for part winding start or star-delta start
- Refrigerant flows through outside of motor winding to provide the most efficient motor cooling
- Built-in PT1000 installed in motor winding
- Horizontal Discharge Check Valve
- Discharge Temperature Thermistor & Motor Temperature Thermistor - Effectively protect compressor in advance when any abnormal alarm occurs
- Explosion-proof solenoid coil
- Liquid Injection and Oil Cooler Function (Port & Stop Pin)
- Oil Level Switch - Ensure sufficient lubricant in compressor for better lubrication, capacity control, cooling and sealing
- Heater 150W (RC100~370) - 300W (RC410~930)
- Connection for Pressure Differential Switch - Easily detect clog in oil filter
- INT69HBY supporting motor and discharge (PTC) temperature sensor protection as well as Phase Loss and Phase Reversal at Start Up Only

Ports

- External Oil Cooler
- Liquid Injection (into screw chamber)
- Economizer

Connections

Discharge Stop Valve	1 1/2"							
Discharge Check Valve	1 1/2"							
Suction Stop Valve	2"							
Economizer	5/8" solder							
Liquid Injection (chamber)	3/8" flare							
Discharge Side	Copper Pipe Sizing 1 5/8"	A	B	C	D	E		
Suction Side	Copper Pipe Sizing 2 1/8"	2.05"	2.95"	1.38"	1.64"	2.05"		



MCC & LRA

MODEL	Hertz	Volts	Maximum Continuous Current	Y-Δ		Part Wind Start	
				Locked Rotor Amps (Y)	Locked Rotor Amps (D)	Locked Rotor Amps (D)	Locked Rotor Amps (DD)
RC2-100A Optimizer for R134a	60	220	109	117	350	156	325
	60	460	52	60	180	84	175
RC2-100B R22, R407C, R404A, R507A, R134a	60	220	142	153	460	211	440
	60	460	68	80	240	113	235

* Ex Mark for explosion proof equipment
 II Equipment group II
 2G Equipment suitable for zone I

Ex Explosion proof according to directive 2014/34EU
 d Flameproof
 c Constructional safety

IIB Gas group: Ethylene
 T4 Max. surface temperature: 135 °C



RC2-140-ExP Screw Compressor Models A&B

Specifications



Ex ATEX
 * Ⓜ II 2 G Ex d IIB T4 Gb (Electrical parts)
 II 2 G c IIB T4 (Non-Electrical parts)

New explosion proof design Screw compressor dedicated to HFC, HCFC & flammable gases. Used in explosive atmospheres.

Compressor	Displacement	CFM	60 Hz	97
	Rated Speed	Rpm	60 Hz	3550
	Volume Ratio	Vi		2.6 (standard other Vi available)
	Capacity Control	%		33%, 66% & 100% Step Capacity Control, 50%~100% Continuous Stepless Capacity Controls
	Lubrication	Differential Pressure Feed Lubricant		
Motor	Type	3 phase, 2 pole, squirrel cage, induction motor		
	Starting	Y-Delta, PWS		
	Voltage	208, 220, 230, 380, 440, 460, 480, 575		
	Nominal HP	32 RC2-140A		
	Nominal HP	50 RC2-140B		
Lubricant Charge	Gallons	1.9		
Oil Heater	Watts	150W		
Hydrostatic Pressure Test	lb/in ² G	597		
Weight	Pounds	628 Comp. (skid 50x26x31- Crated weight 827)		

Standard Compressors Accessories

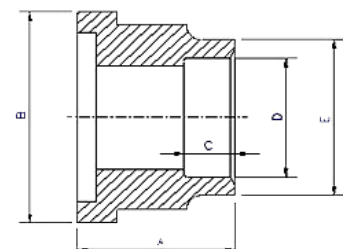
- Available for part winding start or star-delta start
- Refrigerant flows through outside of motor winding to provide the most efficient motor cooling
- Built-in PT1000 installed in motor winding
- Horizontal Discharge Check Valve
- Discharge Temperature Thermistor & Motor Temperature Thermistor - Effectively protect compressor in advance when any abnormal alarm occurs
- Explosion-proof solenoid coil
- Liquid Injection and Oil Cooler Function (Port & Stop Pin)
- Oil Level Switch - Ensure sufficient lubricant in compressor for better lubrication, capacity control, cooling and sealing
- Heater 150W (RC100~370) - 300W (RC410~930)
- Connection for Pressure Differential Switch - Easily detect clog in oil filter
- INT69HBY supporting motor and discharge (PTC) temperature sensor protection as well as Phase Loss and Phase Reversal at Start Up Only

Ports

- External Oil Cooler
- Liquid Injection (into screw chamber)
- Economizer

Connections

Discharge Stop Valve	1 1/2"					
Discharge Check Valve	1 1/2"					
Suction Stop Valve	2"					
Economizer	5/8" solder					
Liquid Injection (chamber)	3/8" flare					
		A	B	C	D	E
Discharge Side	Copper Pipe Sizing 1 5/8"	2.05"	2.95"	1.38"	1.64"	2.05"
Suction Side	Copper Pipe Sizing 2 1/8"	1.99"	3.54"	1.18"	2.14"	2.56"



MCC & LRA

MODEL	Hertz	Volts	Maximum Continuous Current	Y-Δ		Part Wind Start	
				Locked Rotor Amps (Y)	Locked Rotor Amps (D)	Locked Rotor Amps (D)	Locked Rotor Amps (DD)
RC2-140A Optimizer for R134a	60	220	151	153	440	211	440
	60	460	72	80	230	110	230
RC2-140B R22, R407C, R404A, R507A, R134a	60	220	188	198	595	305	610
	60	460	90	108	325	163	325

* Ⓜ Mark for explosion proof equipment
 II Equipment group II
 2G Equipment suitable for zone I

Ex Explosion proof according to directive 2014/34EU
d Flameproof
c Constructional safety

IIB Gas group: Ethylene
T4 Max. surface temperature: 135 °C



RC2-180-ExP Screw Compressor Models A&B

Specifications



Ex ATEX
 * **Ex II 2 G Ex d IIB T4 Gb** (Electrical parts)
II 2 G c IIB T4 (Non-Electrical parts)

New explosion proof design Screw compressor dedicated to HFC, HCFC & flammable gases. Used in explosive atmospheres.

Compressor	Displacement	CFM	60 Hz	127
	Rated Speed	Rpm	60 Hz	3550
	Volume Ratio	Vi		2.6 (standard other Vi available)
	Capacity Control	%		33%, 66% & 100% Step Capacity Control, 50%~100% Continuous Stepless Capacity Controls
Motor	Lubrication	Differential Pressure Feed Lubricant		
	Type	3 phase, 2 pole, squirrel cage, induction motor		
	Starting	Y-Delta, PWS		
	Voltage	208, 220, 230, 380, 440, 460, 480, 575		
	Nominal HP	42 RC2-180A		
	Nominal HP	66 RC2-180B		
Lubricant Charge	Gallons	1.9		
Oil Heater	Watts	150W		
Hydrostatic Pressure Test	lb/in ² G	597		
Weight	Pounds	739 Comp. (skid 50x26x31—Crated weight 946)		

Standard Compressors Accessories

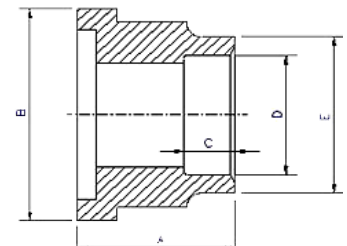
- Available for part winding start or star-delta start
- Refrigerant flows through outside of motor winding to provide the most efficient motor cooling
- Built-in PT1000 installed in motor winding
- Horizontal Discharge Check Valve
- Discharge Temperature Thermistor & Motor Temperature Thermistor - Effectively protect compressor in advance when any abnormal alarm occurs
- Explosion-proof solenoid coil
- Liquid Injection and Oil Cooler Function (Port & Stop Pin)
- Oil Level Switch - Ensure sufficient lubricant in compressor for better lubrication, capacity control, cooling and sealing
- Heater 150W (RC100~370) - 300W (RC410~930)
- Connection for Pressure Differential Switch - Easily detect clog in oil filter
- INT69HBY supporting motor and discharge (PTC) temperature sensor protection as well as Phase Loss and Phase Reversal at Start Up Only

Ports

- External Oil Cooler
- Liquid Injection (into screw chamber)
- Economizer

Connections

Discharge Stop Valve		1 1/2"						
Discharge Check Valve		1 1/2"						
Suction Stop Valve		2"						
Economizer		5/8" solder						
Liquid Injection (chamber)		3/8" flare						
			A	B	C	D	E	
Discharge Side	Copper Pipe Sizing 1 5/8"		2.05"	2.95"	1.38"	1.64"	2.05"	
Suction Side	Copper Pipe Sizing 2 5/8"		2.36"	4.33"	1.38"	2.63"	3.03"	



MCC & LRA

MODEL	Hertz	Volts	Maximum Continuous Current	Y-Δ		Part Wind Start	
				Locked Rotor Amps (Y)	Locked Rotor Amps (D)	Locked Rotor Amps (D)	Locked Rotor Amps (DD)
RC2-180A Optimizer for R134a	60	220	109	117	350	156	325
	60	460	52	60	180	84	175
RC2-180B R22, R407C, R404A, R507A, R134a	60	220	249	310	930	444	840
	60	460	119	162	485	239	450

* **Ex** Mark for explosion proof equipment
II Equipment group II
2G Equipment suitable for zone I

Ex Explosion proof according to directive 2014/34EU
d Flameproof
c Constructional safety

IIB Gas group: Ethylene
T4 Max. surface temperature: 135 °C



RC2-200-ExP Screw Compressor Models A&B

Specifications



* Ex II 2 G Ex d IIB T4 Gb (Electrical parts)
 II 2 G c IIB T4 (Non-Electrical parts)

New explosion proof design Screw compressor dedicated to HFC, HCFC & flammable gases.
 Used in explosive atmospheres.

Compressor	Displacement	CFM	60 Hz	137
	Rated Speed	Rpm	60 Hz	3550
	Volume Ratio	Vi		2.6 (standard other Vi available)
	Capacity Control	%		25%, 50%, 75% & 100% Step Capacity Control, 50%~100% Continuous Stepless Capacity Controls
	Lubrication	Differential Pressure Feed Lubricant		
Motor	Type	3 phase, 2 pole, squirrel cage, induction motor		
	Starting	Y-Delta, PWS		
	Voltage	208, 220, 230, 380, 440, 460, 480, 575		
	Nominal HP	45 RC2-200A		
	Nominal HP	70 RC2-200B		
Lubricant Charge	Gallons	2.1		
Oil Heater	Watts	150W		
Hydrostatic Pressure Test	lb/in ² G	597		
Weight	Pounds	937 Comp. (skid 54x28x31 - Crated weight 1197)		

Standard Compressors Accessories

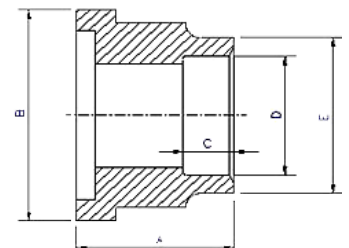
- Available for part winding start or star-delta start
- Refrigerant flows through outside of motor winding to provide the most efficient motor cooling
- Built-in PT1000 installed in motor winding
- Horizontal Discharge Check Valve
- Discharge Temperature Thermistor & Motor Temperature Thermistor - Effectively protect compressor in advance when any abnormal alarm occurs
- Explosion-proof solenoid coil
- Liquid Injection and Oil Cooler Function (Port & Stop Pin)
- Oil Level Switch - Ensure sufficient lubricant in compressor for better lubrication, capacity control, cooling and sealing
- Heater 150W (RC100~370) - 300W (RC410~930)
- Connection for Pressure Differential Switch - Easily detect clog in oil filter
- INT69HBY supporting motor and discharge (PTC) temperature sensor protection as well as Phase Loss and Phase Reversal at Start Up Only

Ports

- External Oil Cooler
- Liquid Injection (into screw chamber)
- Economizer

Connections

Discharge Stop Valve		1 1/2"						
Discharge Check Valve		1 1/2"						
Suction Stop Valve		2 1/2"						
Economizer		5/8" solder						
Liquid Injection (chamber)		3/8" flare						
			A	B	C	D	E	
Discharge Side	Copper Pipe Sizing 1 5/8"		2.05"	2.95"	1.38"	1.64"	2.05"	
Suction Side	Copper Pipe Sizing 2 5/8"		2.36"	4.33"	1.38"	2.63"	2.56"	



MCC & LRA

MODEL	Hertz	Volts	Maximum Continuous Current	Y-Δ		Part Wind Start	
				Locked Rotor Amps (Y)	Locked Rotor Amps (D)	Locked Rotor Amps (D)	Locked Rotor Amps (DD)
RC2-200A Optimizer for R134a	60	220	214	198	595	305	610
	60	460	102	108	325	163	175
RC2-200B R22, R407C, R404A, R507A, R134a	60	220	266	310	930	445	840
	60	460	127	162	485	239	450

* Ex Mark for explosion proof equipment
 II Equipment group II
 2G Equipment suitable for zone I

Ex Explosion proof according to directive 2014/34EU
 d Flameproof
 c Constructional safety

IIB Gas group: Ethylene
 T4 Max. surface temperature: 135 °C



RC2-230-ExP Screw Compressor Models A&B

Specifications



* Ex II 2 G Ex d IIB T4 Gb (Electrical parts)
 II 2 G c IIB T4 (Non-Electrical parts)

New explosion proof design Screw compressor dedicated to HFC, HCFC & flammable gases.
 Used in explosive atmospheres.

Compressor	Displacement	CFM	60 Hz	163
	Rated Speed	Rpm	60 Hz	3550
	Volume Ratio	Vi		2.6 (standard other Vi available)
	Capacity Control	%		35%, 50%, 75% & 100% Step Capacity Control, 50%~100% Continuous Stepless Capacity Controls
	Lubrication	Differential Pressure Feed Lubricant		
Motor	Type	3 phase, 2 pole, squirrel cage, induction motor		
	Starting	Y-Delta, PWS		
	Voltage	208, 220, 230, 380, 440, 460, 480, 575		
	Nominal HP	53 RC2-230A		
	Nominal HP	81 RC2-230B		
Lubricant Charge	Gallons	3.7		
Oil Heater	Watts	150W		
Hydrostatic Pressure Test	lb/in ² G	597		
Weight	Pounds	1224 Comp. (skid 61x32x35 - Crated weight 1543)		

Standard Compressors Accessories

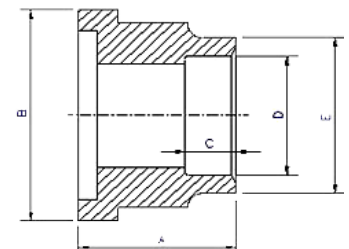
- Available for part winding start or star-delta start
- Refrigerant flows through outside of motor winding to provide the most efficient motor cooling
- Built-in PT1000 installed in motor winding
- Horizontal Discharge Check Valve
- Discharge Temperature Thermistor & Motor Temperature Thermistor - Effectively protect compressor in advance when any abnormal alarm occurs
- Explosion-proof solenoid coil
- Liquid Injection and Oil Cooler Function (Port & Stop Pin)
- Oil Level Switch - Ensure sufficient lubricant in compressor for better lubrication, capacity control, cooling and sealing
- Heater 150W (RC100~370) - 300W (RC410~930)
- Connection for Pressure Differential Switch - Easily detect clog in oil filter
- INT69HBY supporting motor and discharge (PTC) temperature sensor protection as well as Phase Loss and Phase Reversal at Start Up Only

Ports

- External Oil Cooler
- Liquid Injection (into screw chamber)
- Economizer

Connections

Discharge Stop Valve	2"					
Discharge Check Valve	2"					
Suction Stop Valve	3"					
Economizer	5/8" solder					
Liquid Injection (chamber)	3/8" flare	A	B	C	D	E
Discharge Side	Copper Pipe Sizing 2 1/8"	1.97"	3.54"	1.18"	2.14"	2.56"
Suction Side	Copper Pipe Sizing 3 1/8"	2.60"	4.72"	1.77"	3.14"	3.54"



MCC & LRA

MODEL	Hertz	Volts	Maximum Continuous Current	Y-Δ		Part Wind Start	
				Locked Rotor Amps (Y)	Locked Rotor Amps (D)	Locked Rotor Amps (D)	Locked Rotor Amps (DD)
RC2-230A Optimizer for R134a	60	220	318	460	1030	763	1230
	60	460	152	240	475	329	530
RC2-230B R22, R407C, R404A, R507A, R134a	60	220	318	460	1380	763	1230
	60	460	152	240	720	329	530

* Ex Mark for explosion proof equipment
 II Equipment group II
 2G Equipment suitable for zone I

Ex Explosion proof according to directive 2014/34EU
d Flameproof
c Constructional safety

IIB Gas group: Ethylene
T4 Max. surface temperature: 135 °C



RC2-260-ExP Screw Compressor Models A&B

Specifications



* **Ex II 2 G Ex d IIB T4 Gb** (Electrical parts)
II 2 G c IIB T4 (Non-Electrical parts)

New explosion proof design Screw compressor dedicated to HFC, HCFC & flammable gases. Used in explosive atmospheres.

Compressor	Displacement	CFM	60 Hz	182
	Rated Speed	Rpm	60 Hz	3550
	Volume Ratio	Vi		2.6 (standard other Vi available)
	Capacity Control	%		25%, 50%, 75% & 100% Step Capacity Control, 50%~100% Continuous Stepless Capacity Controls
	Lubrication	Differential Pressure Feed Lubricant		
Motor	Type	3 phase, 2 pole, squirrel cage, induction motor		
	Starting	Y-Delta, PWS		
	Voltage	208, 220, 230, 380, 440, 460, 480, 575		
	Nominal HP	59 RC2-260A		
	Nominal HP	90 RC2-260B		
Lubricant Charge	Gallons	3.7		
Oil Heater	Watts	150W		
Hydrostatic Pressure Test	lb/in ² G	597		
Weight	Pounds	1235 Comp. (skid 61x32x35 - Crated weight 1554)		

Standard Compressors Accessories

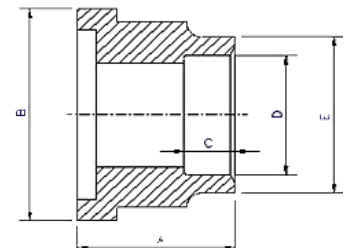
- Available for part winding start or star-delta start
- Refrigerant flows through outside of motor winding to provide the most efficient motor cooling
- Built-in PT1000 installed in motor winding
- Horizontal Discharge Check Valve
- Discharge Temperature Thermistor & Motor Temperature Thermistor - Effectively protect compressor in advance when any abnormal alarm occurs
- Explosion-proof solenoid coil
- Liquid Injection and Oil Cooler Function (Port & Stop Pin)
- Oil Level Switch - Ensure sufficient lubricant in compressor for better lubrication, capacity control, cooling and sealing
- Heater 150W (RC100~370) - 300W (RC410~930)
- Connection for Pressure Differential Switch - Easily detect clog in oil filter
- INT69HBY supporting motor and discharge (PTC) temperature sensor protection as well as Phase Loss and Phase Reversal at Start Up Only

Ports

- External Oil Cooler
- Liquid Injection (into screw chamber)
- Economizer

Connections

Discharge Stop Valve		2"				
Discharge Check Valve		2"				
Suction Stop Valve		3"				
Economizer		5/8" solder				
Liquid Injection (chamber)		3/8" flare				
	A	B	C	D	E	
Discharge Side	Copper Pipe Sizing 2 1/8"	1.97"	3.54"	1.18"	2.14"	2.56"
Suction Side	Copper Pipe Sizing 3 1/8"	2.60"	4.72"	1.77"	3.14"	3.54"



MCC & LRA

MODEL	Hertz	Volts	Maximum Continuous Current	Y-Δ		Part Wind Start	
				Locked Rotor Amps (Y)	Locked Rotor Amps (D)	Locked Rotor Amps (D)	Locked Rotor Amps (DD)
RC2-260A Optimizer for R134a	60	220	286	302	905	618	1030
	60	460	137	167	500	285	475
RC2-260B R22, R407C, R404A, R507A, R134a	60	220	355	460	1380	868	1335
	60	460	170	240	720	423	650

* **Ex** Mark for explosion proof equipment
II Equipment group II
2G Equipment suitable for zone I

Ex Explosion proof according to directive 2014/34EU
d Flameproof
c Constructional safety

IIB Gas group: Ethylene
T4 Max. surface temperature: 135 °C



RC2-300-ExP Screw Compressor Models A&B

Specifications



* Ⓜ II 2 G Ex d IIB T4 Gb (Electrical parts)
 II 2 G c IIB T4 (Non-Electrical parts)

New explosion proof design Screw compressor dedicated to HFC, HCFC & flammable gases. Used in explosive atmospheres.

Compressor	Displacement	CFM	60 Hz	207
	Rated Speed	Rpm	60 Hz	3550
	Volume Ratio	Vi		2.6 (standard other Vi available)
	Capacity Control	%		25%, 50%, 75% & 100% Step Capacity Control, 50%~100% Continuous Stepless Capacity Controls
	Lubrication	Differential Pressure Feed Lubricant		
Motor	Type	3 phase, 2 pole, squirrel cage, induction motor		
	Starting	Y-Delta, PWS		
	Voltage	208, 220, 230, 380, 440, 460, 480, 575		
	Nominal HP	67 RC2-300A		
	Nominal HP	107 RC2-300B		
Lubricant Charge	Gallons	4.2		
Oil Heater	Watts	150W		
Hydrostatic Pressure Test	lb/in ² G	597		
Weight	Pounds	1323 Comp. (skid 61x32x35—Crated weight 1676)		

Standard Compressors Accessories

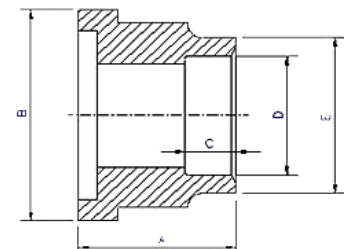
- Available for part winding start or star-delta start
- Refrigerant flows through outside of motor winding to provide the most efficient motor cooling
- Built-in PT1000 installed in motor winding
- Horizontal Discharge Check Valve
- Discharge Temperature Thermistor & Motor Temperature Thermistor - Effectively protect compressor in advance when any abnormal alarm occurs
- Explosion-proof solenoid coil
- Liquid Injection and Oil Cooler Function (Port & Stop Pin)
- Oil Level Switch - Ensure sufficient lubricant in compressor for better lubrication, capacity control, cooling and sealing
- Heater 150W (RC100~370) - 300W (RC410~930)
- Connection for Pressure Differential Switch - Easily detect clog in oil filter
- INT69HBY supporting motor and discharge (PTC) temperature sensor protection as well as Phase Loss and Phase Reversal at Start Up Only

Ports

- External Oil Cooler
- Liquid Injection (into screw chamber)
- Economizer

Connections

Discharge Stop Valve	2"					
Discharge Check Valve	2"					
Suction Stop Valve	3"					
Economizer	5/8" solder					
Liquid Injection (chamber)	3/8" flare					
		A	B	C	D	E
Discharge Side	Copper Pipe Sizing 2 5/8"	1.97"	3.54"	1.18"	2.14"	2.56"
Suction Side	Copper Pipe Sizing 3 1/8"	2.60"	4.72"	1.77"	3.14"	3.54"



MCC & LRA

MODEL	Hertz	Volts	Maximum Continuous Current	Y-Δ		Part Wind Start	
				Locked Rotor Amps (Y)	Locked Rotor Amps (D)	Locked Rotor Amps (D)	Locked Rotor Amps (DD)
RC2-100A Optimizer for R134a	60	220	322	375	1125	763	1230
	60	460	154	208	625	329	530
RC2-100B R22, R407C, R404A, R507A, R134a	60	220	401	520	1560	1121	1725
	60	460	192	272	815	497	765

* Ⓜ Mark for explosion proof equipment
 II Equipment group II
 2G Equipment suitable for zone I

Ex Explosion proof according to directive 2014/34EU
 d Flameproof
 c Constructional safety

IIB Gas group: Ethylene
 T4 Max. surface temperature: 135 °C



RC2-310-ExP Screw Compressor Models A&B

Specifications



* **Ex II 2 G Ex d IIB T4 Gb** (Electrical parts)
II 2 G c IIB T4 (Non-Electrical parts)

New explosion proof design Screw compressor dedicated to HFC, HCFC & flammable gases. Used in explosive atmospheres.

Compressor	Displacement	CFM	60 Hz	218
	Rated Speed	Rpm	60 Hz	3550
	Volume Ratio	Vi		2.6 (standard other Vi available)
	Capacity Control	%		35%, 50%, 75% & 100% Step Capacity Control, 50%~100% Continuous Stepless Capacity Controls
	Lubrication	Differential Pressure Feed Lubricant		
Motor	Type	3 phase, 2 pole, squirrel cage, induction motor		
	Starting	Y-Delta, PWS		
	Voltage	208, 220, 230, 380, 440, 460, 480, 575		
	Nominal HP	71 RC2-310AA		
	Nominal HP	110 RC2-310B		
Lubricant Charge	Gallons	4.2		
Oil Heater	Watts	150W		
Hydrostatic Pressure Test	lb/in ² G	597		
Weight	Pounds	1279 Comp. (skid 61x32x35 - Crated weight 1653)		

Standard Compressors Accessories

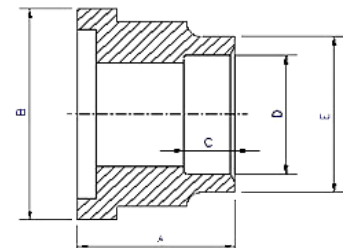
- Available for part winding start or star-delta start
- Refrigerant flows through outside of motor winding to provide the most efficient motor cooling
- Built-in PT1000 installed in motor winding
- Horizontal Discharge Check Valve
- Discharge Temperature Thermistor & Motor Temperature Thermistor - Effectively protect compressor in advance when any abnormal alarm occurs
- Explosion-proof solenoid coil
- Liquid Injection and Oil Cooler Function (Port & Stop Pin)
- Oil Level Switch - Ensure sufficient lubricant in compressor for better lubrication, capacity control, cooling and sealing
- Heater 150W (RC100~370) - 300W (RC410~930)
- Connection for Pressure Differential Switch - Easily detect clog in oil filter
- INT69HBY supporting motor and discharge (PTC) temperature sensor protection as well as Phase Loss and Phase Reversal at Start Up Only

Ports

- External Oil Cooler
- Liquid Injection (into screw chamber)
- Economizer

Connections

Discharge Stop Valve	2"					
Discharge Check Valve	2"					
Suction Stop Valve	3"					
Economizer	7/8" solder					
Liquid Injection (chamber)	5/8" flare					
		A	B	C	D	E
Discharge Side	Copper Pipe Sizing 1 5/8"	1.97"	3.54"	1.18"	2.14"	2.56"
Suction Side	Copper Pipe Sizing 2 1/8"	2.60"	4.72"	1.77"	3.14"	3.54"



MCC & LRA

MODEL	Hertz	Volts	Maximum Continuous Current	Y-Δ		Part Wind Start	
				Locked Rotor Amps (Y)	Locked Rotor Amps (D)	Locked Rotor Amps (D)	Locked Rotor Amps (DD)
RC2-310A Optimizer for R134a	60	220	341	375	1125	763	1230
	60	460	163	208	625	329	530
RC2-310B R22, R407C, R404A, R507A, R134a	60	220	421	520	1560	1121	1725
	60	460	201	272	815	497	765

* **Ex** Mark for explosion proof equipment
II Equipment group II
2G Equipment suitable for zone I

Ex Explosion proof according to directive 2014/34EU
d Flameproof
c Constructional safety

IIB Gas group: Ethylene
T4 Max. surface temperature: 135 °C



RC2-340-ExP Screw Compressor Models A&B

Specifications



* **Ex II 2 G Ex d IIB T4 Gb** (Electrical parts)
II 2 G c IIB T4 (Non-Electrical parts)

New explosion proof design Screw compressor dedicated to HFC, HCFC & flammable gases. Used in explosive atmospheres.

Compressor	Displacement	CFM	60 Hz	240
	Rated Speed	Rpm	60 Hz	3550
	Volume Ratio	Vi		2.6 (standard other Vi available)
	Capacity Control	%		35%,50%,75% & 100% Step Capacity Control, 50%~100% Continuous Stepless Capacity Controls
	Lubrication	Differential Pressure Feed Lubricant		
Motor	Type	3 phase, 2 pole, squirrel cage, induction motor		
	Starting	Y-Delta, PWS		
	Voltage	208, 220, 230, 380, 440, 460, 480, 575		
	Nominal HP	77 RC2-340A		
	Nominal HP	121 RC2-340B		
Lubricant Charge	Gallons	4.2		
Oil Heater	Watts	150W		
Hydrostatic Pressure Test	lb/in ² G	597		
Weight	Pounds	1367 Comp. (skid 61x32x35— Crated weight 1764)		

Standard Compressors Accessories

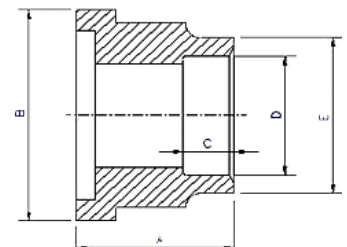
- Available for part winding start or star-delta start
- Refrigerant flows through outside of motor winding to provide the most efficient motor cooling
- Built-in PT1000 installed in motor winding
- Horizontal Discharge Check Valve
- Discharge Temperature Thermistor & Motor Temperature Thermistor - Effectively protect compressor in advance when any abnormal alarm occurs
- Explosion-proof solenoid coil
- Liquid Injection and Oil Cooler Function (Port & Stop Pin)
- Oil Level Switch - Ensure sufficient lubricant in compressor for better lubrication, capacity control, cooling and sealing
- Heater 150W (RC100~370) - 300W (RC410~930)
- Connection for Pressure Differential Switch - Easily detect clog in oil filter
- INT69HBY supporting motor and discharge (PTC) temperature sensor protection as well as Phase Loss and Phase Reversal at Start Up Only

Ports

- External Oil Cooler
- Liquid Injection (into screw chamber)
- Economizer

Connections

Discharge Stop Valve		2 1/2"						
Discharge Check Valve		2 1/2"						
Suction Stop Valve		4"						
Economizer		7/8" solder						
Liquid Injection (chamber)		5/8" flare						
			A	B	C	D	E	
Discharge Side	Copper Pipe Sizing 2 5/8"		2.36"	4.33"	1.38"	2.63"	3.03"	
Suction Side	Copper Pipe Sizing 4 1/8"		2.99"	5.71"	1.97"	4.14"	4.57"	



MCC & LRA

MODEL	Hertz	Volts	Maximum Continuous Current	Y-Δ		Part Wind Start	
				Locked Rotor Amps (Y)	Locked Rotor Amps (D)	Locked Rotor Amps (D)	Locked Rotor Amps (DD)
RC2-340A Optimizer for R134a	60	220	367	460	1380	868	1335
	60	460	176	240	720	423	650
RC2-340B R22, R407C, R404A, R507A, R134a	60	220	457	662	1985	1342	2065
	60	460	218	360	1080	640	985

* **Ex** Mark for explosion proof equipment
II Equipment group II
2G Equipment suitable for zone I

Ex Explosion proof according to directive 2014/34EU
d Flameproof
c Constructional safety

IIB Gas group: Ethylene
T4 Max. surface temperature: 135 °C



RC2-370-ExP Screw Compressor Models A&B

Specifications



* **Ex II 2 G Ex d IIB T4 Gb** (Electrical parts)
II 2 G c IIB T4 (Non-Electrical parts)

New explosion proof design Screw compressor dedicated to HFC, HCFC & flammable gases. Used in explosive atmospheres.

Compressor	Displacement	CFM	60 Hz	259
	Rated Speed	Rpm	60 Hz	3550
	Volume Ratio	Vi		2.6 (standard other Vi available)
	Capacity Control	%		35%,50%,75% & 100% Step Capacity Control, 50%~100% Continuous Stepless Capacity Controls
	Lubrication	Differential Pressure Feed Lubricant		
Motor	Type	3 phase, 2 pole, squirrel cage, induction motor		
	Starting	Y-Delta, PWS		
	Voltage	208, 220, 230, 380, 440, 460, 480, 575		
	Nominal HP	84 RC2-370A		
	Nominal HP	130 RC2-370B		
Lubricant Charge	Gallons	4.2		
Oil Heater	Watts	150W		
Hydrostatic Pressure Test	lb/in ² G	597		
Weight	Pounds	1411 Comp. (skid 61x30x35- Crated weight 1775)		

Standard Compressors Accessories

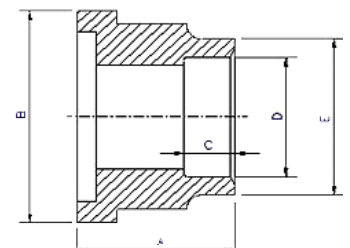
- Available for part winding start or star-delta start
- Refrigerant flows through outside of motor winding to provide the most efficient motor cooling
- Built-in PT1000 installed in motor winding
- Horizontal Discharge Check Valve
- Discharge Temperature Thermistor & Motor Temperature Thermistor - Effectively protect compressor in advance when any abnormal alarm occurs
- Explosion-proof solenoid coil
- Liquid Injection and Oil Cooler Function (Port & Stop Pin)
- Oil Level Switch - Ensure sufficient lubricant in compressor for better lubrication, capacity control, cooling and sealing
- Heater 150W (RC100~370) - 300W (RC410~930)
- Connection for Pressure Differential Switch - Easily detect clog in oil filter
- INT69HBY supporting motor and discharge (PTC) temperature sensor protection as well as Phase Loss and Phase Reversal at Start Up Only

Ports

- External Oil Cooler
- Liquid Injection (into screw chamber)
- Economizer

Connections

Discharge Stop Valve	2 1/2"					
Discharge Check Valve	2 1/2"					
Suction Stop Valve	4"					
Economizer	7/8" solder					
Liquid Injection (chamber)	5/8" flare					
		A	B	C	D	E
Discharge Side	Copper Pipe Sizing 2 5/8"	2.36"	4.33"	1.38"	2.63"	3.03"
Suction Side	Copper Pipe Sizing 4 1/8"	2.99"	5.71"	1.97"	4.14"	4.57"



MCC & LRA

MODEL	Hertz	Volts	Maximum Continuous Current	Y-Δ		Part Wind Start	
				Locked Rotor Amps (Y)	Locked Rotor Amps (D)	Locked Rotor Amps (D)	Locked Rotor Amps (DD)
RC2-370A Optimizer for R134a	60	220	403	460	1380	868	1335
	60	460	193	240	720	423	650
RC2-370B R22, R407C, R404A, R507A, R134a	60	220	500	662	1985	1342	2065
	60	460	239	360	1080	640	985

* **Ex** Mark for explosion proof equipment
II Equipment group II
2G Equipment suitable for zone I

Ex Explosion proof according to directive 2014/34EU
d Flameproof
c Constructional safety

IIB Gas group: Ethylene
T4 Max. surface temperature: 135 °C



RC2-410-ExP Screw Compressor Models A&B

Specifications



Ex ATEX
 * **Ex II 2 G Ex d IIB T4 Gb** (Electrical parts)
II 2 G c IIB T4 (Non-Electrical parts)

New explosion proof design Screw compressor dedicated to HFC, HCFC & flammable gases. Used in explosive atmospheres.

Compressor	Displacement	CFM	60 Hz	288
	Rated Speed	Rpm	60 Hz	3550
	Volume Ratio	Vi		2.6 (standard other Vi available)
	Capacity Control	%		25%,50%,75% & 100% Step Capacity Control, 50%~100% Continuous Stepless Capacity Controls
	Lubrication			Differential Pressure Feed Lubricant
Motor	Type			3 phase, 2 pole, squirrel cage, induction motor
	Starting			Y-Delta, PWS
	Voltage			208, 220, 230, 380, 440, 460, 480, 575
	Nominal HP			93 RC2-410A
	Nominal HP			146 RC2-410B
Lubricant Charge	Gallons			4.0
Oil Heater	Watts			300W
Hydrostatic Pressure Test	lb/in ² G			597
Weight	Pounds			1631 Comp. (skid 66x33x37-Crated weight 2046)

Standard Compressors Accessories

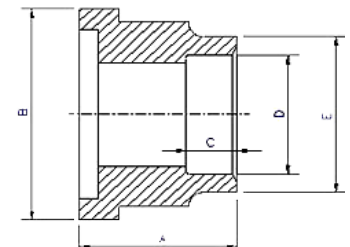
- Available for part winding start or star-delta start
- Refrigerant flows through outside of motor winding to provide the most efficient motor cooling
- Built-in PT1000 installed in motor winding
- Horizontal Discharge Check Valve
- Discharge Temperature Thermistor & Motor Temperature Thermistor - Effectively protect compressor in advance when any abnormal alarm occurs
- Explosion-proof solenoid coil
- Liquid Injection and Oil Cooler Function (Port & Stop Pin)
- Oil Level Switch - Ensure sufficient lubricant in compressor for better lubrication, capacity control, cooling and sealing
- Heater 150W (RC100~370) - 300W (RC410~930)
- Connection for Pressure Differential Switch - Easily detect clog in oil filter
- INT69HBY supporting motor and discharge (PTC) temperature sensor protection as well as Phase Loss and Phase Reversal at Start Up Only

Ports

- External Oil Cooler
- Liquid Injection (into screw chamber)
- Economizer

Connections

Discharge Stop Valve		2 1/2"						
Discharge Check Valve		2 1/2"						
Suction Stop Valve		4"						
Economizer		7/8" solder						
Liquid Injection (chamber)		5/8" flare						
			A	B	C	D	E	
Discharge Side	Copper Pipe Sizing 2 5/8"		2.36"	4.33"	1.38"	2.63"	3.03"	
Suction Side	Copper Pipe Sizing 4 1/8"		2.99"	5.71"	1.97"	4.14"	4.57"	



MCC & LRA

MODEL	Hertz	Volts	Maximum Continuous Current	Y-Δ		Part Wind Start	
				Locked Rotor Amps (Y)	Locked Rotor Amps (D)	Locked Rotor Amps (D)	Locked Rotor Amps (DD)
RC2-410A Optimizer for R134a	60	460	215	243	730	497	765
RC2-410B R22, R407C, R404A, R507A, R134a	60	460	267	305	915	646	950

* **Ex** Mark for explosion proof equipment
II Equipment group II
2G Equipment suitable for zone I

Ex Explosion proof according to directive 2014/34EU
d Flameproof
c Constructional safety

IIB Gas group: Ethylene
T4 Max. surface temperature: 135 °C



RC2-470-ExP Screw Compressor Models A&B

Specifications



* Ex II 2 G Ex d IIB T4 Gb (Electrical parts)
 II 2 G c IIB T4 (Non-Electrical parts)

New explosion proof design Screw compressor dedicated to HFC, HCFC & flammable gases. Used in explosive atmospheres.

Compressor	Displacement	CFM	60 Hz	334
	Rated Speed	Rpm	60 Hz	3550
	Volume Ratio	Vi		2.6 (standard other Vi available)
	Capacity Control	%		25%,50%,75% & 100% Step Capacity Control, 50%~100% Continuous Stepless Capacity Controls
	Lubrication	Differential Pressure Feed Lubricant		
Motor	Type	3 phase, 2 pole, squirrel cage, induction motor		
	Starting	Y-Delta, PWS		
	Voltage	208, 220, 230, 380, 440, 460, 480, 575		
	Nominal HP	108 RC2-47A		
	Nominal HP	170 RC2-470B		
Lubricant Charge	Gallons	4.8		
Oil Heater	Watts	300W		
Hydrostatic Pressure Test	lb/in ² G	597		
Weight	Pounds	1786 Comp. (skid 66x33x37 - Crated weight 2211)		

Standard Compressors Accessories

- Available for part winding start or star-delta start
- Refrigerant flows through outside of motor winding to provide the most efficient motor cooling
- Built-in PT1000 installed in motor winding
- Horizontal Discharge Check Valve
- Discharge Temperature Thermistor & Motor Temperature Thermistor - Effectively protect compressor in advance when any abnormal alarm occurs
- Explosion-proof solenoid coil
- Liquid Injection and Oil Cooler Function (Port & Stop Pin)
- Oil Level Switch - Ensure sufficient lubricant in compressor for better lubrication, capacity control, cooling and sealing
- Heater 150W (RC100~370) - 300W (RC410~930)
- Connection for Pressure Differential Switch - Easily detect clog in oil filter
- INT69HBY supporting motor and discharge (PTC) temperature sensor protection as well as Phase Loss and Phase Reversal at Start Up Only

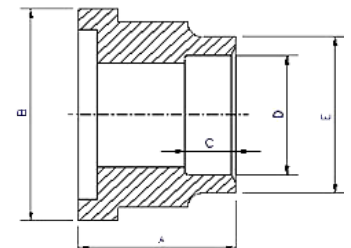
Ports

- External Oil Cooler
- Liquid Injection (into screw chamber)
- Economizer

Connections

Discharge Stop Valve	2 1/2"
Discharge Check Valve	2 1/2"
Suction Stop Valve	4"
Economizer	7/8" solder
Liquid Injection (chamber)	5/8" flare

	A	B	C	D	E	
Discharge Side	Copper Pipe Sizing 2 5/8"	2.36"	4.33"	1.38"	2.63"	3.03"
Suction Side	Copper Pipe Sizing 2 1/8"	2.99"	5.71"	1.97"	4.14"	4.57"



MCC & LRA

MODEL	Hertz	Volts	Maximum Continuous Current	Y-Δ		Part Wind Start	
				Locked Rotor Amps (Y)	Locked Rotor Amps (D)	Locked Rotor Amps (D)	Locked Rotor Amps (DD)
RC2-470A Optimizer for R134a	60	460	248	282	845	598	880
RC2-470B R22, R407C, R404A, R507A, R134a	60	460	307	428	1285	915	1345

* Ex Mark for explosion proof equipment
 II Equipment group II
 2G Equipment suitable for zone I

Ex Explosion proof according to directive 2014/34EU
d Flameproof
c Constructional safety

IIB Gas group: Ethylene
T4 Max. surface temperature: 135 °C



RC2-510-ExP Screw Compressor Models A&B

Specifications



* **Ex II 2 G Ex d IIB T4 Gb** (Electrical parts)
II 2 G c IIB T4 (Non-Electrical parts)

New explosion proof design Screw compressor dedicated to HFC, HCFC & flammable gases. Used in explosive atmospheres.

Compressor	Displacement	CFM	60 Hz	360
	Rated Speed	Rpm	60 Hz	3550
	Volume Ratio	Vi		2.6 (standard other Vi available)
	Capacity Control	%		35%, 50%, 75% & 100% Step Capacity Control, 50%~100% Continuous Stepless Capacity Controls
	Lubrication	Differential Pressure Feed Lubricant		
Motor	Type	3 phase, 2 pole, squirrel cage, induction motor		
	Starting	Y-Delta, PWS		
	Voltage	208, 220, 230, 380, 440, 460, 480, 575		
	Nominal HP	117 RC2-510A		
	Nominal HP	183 RC2-510B		
Lubricant Charge	Gallons	5.3		
Oil Heater	Watts	300W		
Hydrostatic Pressure Test	lb/in ² G	597		
Weight	Pounds	1720 Comp. (skid 66x33x37-Crated weight 2172)		

Standard Compressors Accessories

- Available for part winding start or star-delta start
- Refrigerant flows through outside of motor winding to provide the most efficient motor cooling
- Built-in PT1000 installed in motor winding
- Horizontal Discharge Check Valve
- Discharge Temperature Thermistor & Motor Temperature Thermistor - Effectively protect compressor in advance when any abnormal alarm occurs
- Explosion-proof solenoid coil
- Liquid Injection and Oil Cooler Function (Port & Stop Pin)
- Oil Level Switch - Ensure sufficient lubricant in compressor for better lubrication, capacity control, cooling and sealing
- Heater 150W (RC100~370) - 300W (RC410~930)
- Connection for Pressure Differential Switch - Easily detect clog in oil filter
- INT69HBY supporting motor and discharge (PTC) temperature sensor protection as well as Phase Loss and Phase Reversal at Start Up Only

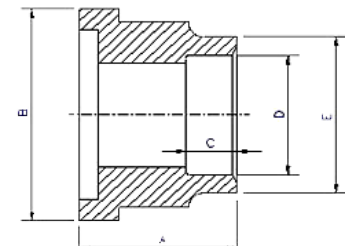
Ports

- External Oil Cooler
- Liquid Injection (into screw chamber)
- Economizer

Connections

Discharge Stop Valve	3"
Discharge Check Valve	3"
Suction Stop Valve	4"
Economizer	7/8" solder
Liquid Injection (chamber)	5/8" flare
Discharge Side	Copper Pipe Sizing 3 1/8"
Suction Side	Copper Pipe Sizing 4 1/8"

	A	B	C	D	E
Discharge Side	2.59"	4.72"	1.77"	3.14"	3.54"
Suction Side	2.99"	5.71"	1.97"	4.14"	4.56"



MCC & LRA

MODEL	Hertz	Volts	Maximum Continuous Current	Y-Δ		Part Wind Start	
				Locked Rotor Amps (Y)	Locked Rotor Amps (D)	Locked Rotor Amps (D)	Locked Rotor Amps (DD)
RC2-510A Optimizer for R134a	60	460	270	282	845	598	880
RC2-510B R22, R407C, R404A, R507A, R134a	60	460	335	463	1390	996	1465

* **Ex** Mark for explosion proof equipment
II Equipment group II
2G Equipment suitable for zone I

Ex Explosion proof according to directive 2014/34EU
d Flameproof
c Constructional safety

IIB Gas group: Ethylene
T4 Max. surface temperature: 135 °C



RC2-550-ExP Screw Compressor Models A&B

Specifications



* Ex II 2 G Ex d IIB T4 Gb (Electrical parts)
 II 2 G c IIB T4 (Non-Electrical parts)

New explosion proof design Screw compressor dedicated to HFC, HCFC & flammable gases. Used in explosive atmospheres.

Compressor	Displacement	CFM	60 Hz	388
	Rated Speed	Rpm	60 Hz	3550
	Volume Ratio	Vi		2.6 (standard other Vi available)
	Capacity Control	%		25%,50%,75% & 100% Step Capacity Control, 50%~100% Continuous Stepless Capacity Controls
	Lubrication	Differential Pressure Feed Lubricant		
Motor	Type	3 phase, 2 pole, squirrel cage, induction motor		
	Starting	Y-Delta, PWS		
	Voltage	208, 220, 230, 380, 440, 460, 480, 575		
	Nominal HP	126 RC2-550A		
	Nominal HP	195 RC2-510B		
Lubricant Charge	Gallons	6.1		
Oil Heater	Watts	300W		
Hydrostatic Pressure Test	lb/in ² G	597		
Weight	Pounds	1874 Comp. (skid 76x35x39—Crated weight 2403)		

Standard Compressors Accessories

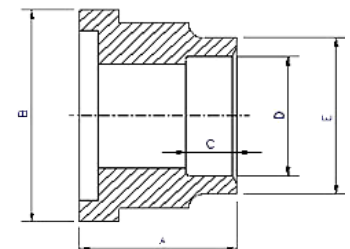
- Available for part winding start or star-delta start
- Refrigerant flows through outside of motor winding to provide the most efficient motor cooling
- Built-in PT1000 installed in motor winding
- Horizontal Discharge Check Valve
- Discharge Temperature Thermistor & Motor Temperature Thermistor - Effectively protect compressor in advance when any abnormal alarm occurs
- Explosion-proof solenoid coil
- Liquid Injection and Oil Cooler Function (Port & Stop Pin)
- Oil Level Switch - Ensure sufficient lubricant in compressor for better lubrication, capacity control, cooling and sealing
- Heater 150W (RC100~370) - 300W (RC410~930)
- Connection for Pressure Differential Switch - Easily detect clog in oil filter
- INT69HBY supporting motor and discharge (PTC) temperature sensor protection as well as Phase Loss and Phase Reversal at Start Up Only

Ports

- External Oil Cooler
- Liquid Injection (into screw chamber)
- Economizer

Connections

Discharge Stop Valve	3"	A	B	C	D	E
Discharge Check Valve	3"					
Suction Stop Valve	4"	A	B	C	D	E
Economizer	1 1/8" solder					
Liquid Injection (chamber)	5/8" flare	A	B	C	D	E
Discharge Side	Copper Pipe Sizing 3 1/8"					
Suction Side	Copper Pipe Sizing 4 1/8"	2.99"	5.71"	1.97"	4.14"	4.56"



MCC & LRA

MODEL	Hertz	Volts	Maximum Continuous Current	Y-Δ		Part Wind Start	
				Locked Rotor Amps (Y)	Locked Rotor Amps (D)	Locked Rotor Amps (D)	Locked Rotor Amps (DD)
RC2-550A Optimizer for R134a	60	460	289	305	915	646	950
RC2-550B R22, R407C, R404A, R507A, R134a	60	460	335	463	1390	996	1465

* Ex Mark for explosion proof equipment
 II Equipment group II
 2G Equipment suitable for zone I

Ex Explosion proof according to directive 2014/34EU
 d Flameproof
 c Constructional safety

IIB Gas group: Ethylene
 T4 Max. surface temperature: 135 °C



RC2-580-ExP Screw Compressor Models A&B

Specifications



* Ex II 2 G Ex d IIB T4 Gb (Electrical parts)
 II 2 G c IIB T4 (Non-Electrical parts)

New explosion proof design Screw compressor dedicated to HFC, HCFC & flammable gases.
 Used in explosive atmospheres.

Compressor	Displacement	CFM	60 Hz	413
	Rated Speed	Rpm	60 Hz	3550
	Volume Ratio	Vi		2.6 (standard other Vi available)
	Capacity Control	%		35%, 50%, 75% & 100% Step Capacity Control, 50%~100% Continuous Stepless Capacity Controls
	Lubrication	Differential Pressure Feed Lubricant		
Motor	Type	3 phase, 2 pole, squirrel cage, induction motor		
	Starting	Y-Delta, PWS		
	Voltage	208, 220, 230, 380, 440, 460, 480, 575		
	Nominal HP	131 RC2-580A		
	Nominal HP	210 RC2-580B		
Lubricant Charge	Gallons	1.5.3		
Oil Heater	Watts	300W		
Hydrostatic Pressure Test	lb/in ² G	597		
Weight	Pounds	1852 Comp. (skid 66x33x37-Crated weight 2326)		

Standard Compressors Accessories

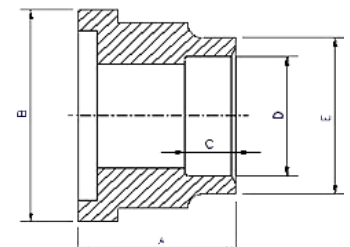
- Available for part winding start or star-delta start
- Refrigerant flows through outside of motor winding to provide the most efficient motor cooling
- Built-in PT1000 installed in motor winding
- Horizontal Discharge Check Valve
- Discharge Temperature Thermistor & Motor Temperature Thermistor - Effectively protect compressor in advance when any abnormal alarm occurs
- Explosion-proof solenoid coil
- Liquid Injection and Oil Cooler Function (Port & Stop Pin)
- Oil Level Switch - Ensure sufficient lubricant in compressor for better lubrication, capacity control, cooling and sealing
- Heater 150W (RC100~370) - 300W (RC410~930)
- Connection for Pressure Differential Switch - Easily detect clog in oil filter
- INT69HBY supporting motor and discharge (PTC) temperature sensor protection as well as Phase Loss and Phase Reversal at Start Up Only

Ports

- External Oil Cooler
- Liquid Injection (into screw chamber)
- Economizer

Connections

Discharge Stop Valve		3"						
Discharge Check Valve		3"						
Suction Stop Valve		4"						
Economizer		1 1/8" solder						
Liquid Injection (chamber)		5/8" flare						
			A	B	C	D	E	
Discharge Side	Copper Pipe Sizing 3 1/8"		2.59"	4.72"	1.77"	3.14"	3.54"	
Suction Side	Copper Pipe Sizing 4 1/8"		2.99"	5.71"	1.97"	4.14"	4.56"	



MCC & LRA

MODEL	Hertz	Volts	Maximum Continuous Current	Y-Δ		Part Wind Start	
				Locked Rotor Amps (Y)	Locked Rotor Amps (D)	Locked Rotor Amps (D)	Locked Rotor Amps (DD)
RC2-580A Optimizer for R134a	60	460	302	305	915	646	950
RC2-580B R22, R407C, R404A, R507A, R134a	60	460	375	463	1390	996	1465

* Ex Mark for explosion proof equipment
 II Equipment group II
 2G Equipment suitable for zone I

Ex Explosion proof according to directive 2014/34EU
d Flameproof
c Constructional safety

IIB Gas group: Ethylene
T4 Max. surface temperature: 135 °C



RC2-620-ExP Screw Compressor Models A&B

Specifications



* Ex II 2 G Ex d IIB T4 Gb (Electrical parts)
 II 2 G c IIB T4 (Non-Electrical parts)

New explosion proof design Screw compressor dedicated to HFC, HCFC & flammable gases. Used in explosive atmospheres.

Compressor	Displacement	CFM	60 Hz	438
	Rated Speed	Rpm	60 Hz	3550
	Volume Ratio	Vi		2.6 (standard other Vi available)
	Capacity Control	%		35%, 50%, 75% & 100% Step Capacity Control, 50%~100% Continuous Stepless Capacity Controls
	Lubrication	Differential Pressure Feed Lubricant		
Motor	Type	3 phase, 2 pole, squirrel cage, induction motor		
	Starting	Y-Delta		
	Voltage	380, 440, 460, 480, 575		
	Nominal HP	137 RC2-620A		
	Nominal HP	220 RC2-620B		
Lubricant Charge	Gallons	6.1		
Oil Heater	Watts	300W		
Hydrostatic Pressure Test	lb/in ² G	597		
Weight	Pounds	1852 Comp. (skid 76x35x390 - crate weight 2749)		

Standard Compressors Accessories

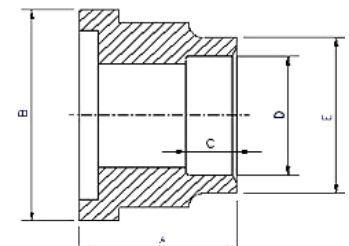
- Available for part winding start or star-delta start
- Refrigerant flows through outside of motor winding to provide the most efficient motor cooling
- Built-in PT1000 installed in motor winding
- Horizontal Discharge Check Valve
- Discharge Temperature Thermistor & Motor Temperature Thermistor - Effectively protect compressor in advance when any abnormal alarm occurs
- Explosion-proof solenoid coil
- Liquid Injection and Oil Cooler Function (Port & Stop Pin)
- Oil Level Switch - Ensure sufficient lubricant in compressor for better lubrication, capacity control, cooling and sealing
- Heater 150W (RC100~370) - 300W (RC410~930)
- Connection for Pressure Differential Switch - Easily detect clog in oil filter
- INT69HBY supporting motor and discharge (PTC) temperature sensor protection as well as Phase Loss and Phase Reversal at Start Up Only

Ports

- External Oil Cooler
- Liquid Injection (into screw chamber)
- Economizer

Connections

Discharge Stop Valve	3"					
Discharge Check Valve	3"					
Suction Stop Valve	5"					
Economizer	1 1/8" solder					
Liquid Injection (chamber)	5/8" flare	A	B	C	D	E
Discharge Side	Copper Pipe Sizing 3 1/8"	2.59"	4.72"	1.77"	3.14"	3.54"
Suction Side	Copper Pipe Sizing 5 1/8"	2.95"	6.85"	1.38"	5.13"	5.77"



MCC & LRA

MODEL	Hertz	Volts	Maximum Continuous Current	Y-Δ
				Locked Rotor Amps
RC2-620A R22, R407C, R404A, R507A, R134a	60	460	315	1285
RC2-620B R22, R407C, R404A, R507A, R134a	60	460	391	1580

* Ex Mark for explosion proof equipment
 II Equipment group II
 2G Equipment suitable for zone I

Ex Explosion proof according to directive 2014/34EU
 d Flameproof
 c Constructional safety

IIB Gas group: Ethylene
 T4 Max. surface temperature: 135 °C



RC2-710-ExP Screw Compressor Models A&B

Specifications



* **Ex II 2 G Ex d IIB T4 Gb** (Electrical parts)
II 2 G c IIB T4 (Non-Electrical parts)

New explosion proof design Screw compressor dedicated to HFC, HCFC & flammable gases. Used in explosive atmospheres.

Compressor	Displacement	CFM	60 Hz	505
	Rated Speed	Rpm	60 Hz	3550
	Volume Ratio	Vi		2.6 (standard other Vi available)
	Capacity Control	%		35%, 50%, 75% & 100% Step Capacity Control, 50%~100% Continuous Stepless Capacity Controls
	Lubrication	Differential Pressure Feed Lubricant		
Motor	Type	3 phase, 2 pole, squirrel cage, induction motor		
	Starting	Y-Delta, PWS		
	Voltage	380, 440, 460, 480, 575		
	Nominal HP	158 RC2-710A		
	Nominal HP	250 RC2-710B		
Lubricant Charge	Gallons	7.4		
Oil Heater	Watts	300W		
Hydrostatic Pressure Test	lb/in ² G	597		
Weight	Pounds	2423 Comp. (skid 76x43x39-Crated weight 3047)		

Standard Compressors Accessories

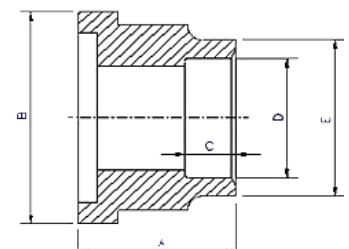
- Available for part winding start or star-delta start
- Refrigerant flows through outside of motor winding to provide the most efficient motor cooling
- Built-in PT1000 installed in motor winding
- Horizontal Discharge Check Valve
- Discharge Temperature Thermistor & Motor Temperature Thermistor - Effectively protect compressor in advance when any abnormal alarm occurs
- Explosion-proof solenoid coil
- Liquid Injection and Oil Cooler Function (Port & Stop Pin)
- Oil Level Switch - Ensure sufficient lubricant in compressor for better lubrication, capacity control, cooling and sealing
- Heater 150W (RC100~370) - 300W (RC410~930)
- Connection for Pressure Differential Switch - Easily detect clog in oil filter
- INT69HBY supporting motor and discharge (PTC) temperature sensor protection as well as Phase Loss and Phase Reversal at Start Up Only

Ports

- External Oil Cooler
- Liquid Injection (into screw chamber)
- Economizer

Connections

Discharge Stop Valve	4"					
Discharge Check Valve	4"					
Suction Stop Valve	5"					
Economizer	1 1/8" solder					
Liquid Injection (chamber)	5/8" flare	A	B	C	D	E
Discharge Side	Copper Pipe Sizing 4 1/8"	2.99"	5.71"	1.97"	4.14"	4.56"
Suction Side	Copper Pipe Sizing 5 1/8"	2.95"	6.85"	1.38"	5.14"	5.77"



MCC & LRA

MODEL	Hertz	Volts	Maximum Continuous Current	Y-Δ
				Locked Rotor Amps
RC2-710A R22, R407C, R404A, R507A, R134a	60	460	363	1400
RC2-710B R22, R407C, R404A, R507A, R134a	60	460	450	2080

* **Ex** Mark for explosion proof equipment
II Equipment group II
2G Equipment suitable for zone I

Ex Explosion proof according to directive 2014/34EU
d Flameproof
c Constructional safety

IIB Gas group: Ethylene
T4 Max. surface temperature: 135 °C



RC2-790-ExP Screw Compressor Models A&B

Specifications



* Ex II 2 G Ex d IIB T4 Gb (Electrical parts)
 II 2 G c IIB T4 (Non-Electrical parts)

New explosion proof design Screw compressor dedicated to HFC, HCFC & flammable gases.
 Used in explosive atmospheres.

Compressor	Displacement	CFM	60 Hz	560
	Rated Speed	Rpm	60 Hz	3550
	Volume Ratio	Vi		2.6 (standard other Vi available)
	Capacity Control	%		30%, 50%, 75% & 100% Step Capacity Control, 50%~100% Continuous Stepless Capacity Controls
	Lubrication	Differential Pressure Feed Lubricant		
Motor	Type	3 phase, 2 pole, squirrel cage, induction motor		
	Starting	Y-Delta		
	Voltage	380, 440, 460, 480, 575		
	Nominal HP	175RC2-790A		
	Nominal HP	276 RC2-790B		
Lubricant Charge	Gallons	7.4		
Oil Heater	Watts	300W		
Hydrostatic Pressure Test	lb/in ² G	597		
Weight	Pounds	2601 Comp. (skid 86x43x39—Crated weight 3316)		

Standard Compressors Accessories

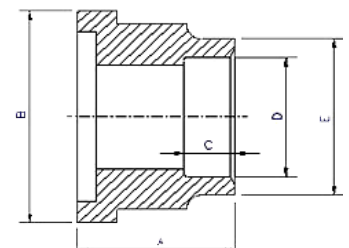
- Available for part winding start or star-delta start
- Refrigerant flows through outside of motor winding to provide the most efficient motor cooling
- Built-in PT1000 installed in motor winding
- Horizontal Discharge Check Valve
- Discharge Temperature Thermistor & Motor Temperature Thermistor - Effectively protect compressor in advance when any abnormal alarm occurs
- Explosion-proof solenoid coil
- Liquid Injection and Oil Cooler Function (Port & Stop Pin)
- Oil Level Switch - Ensure sufficient lubricant in compressor for better lubrication, capacity control, cooling and sealing
- Heater 150W (RC100~370) - 300W (RC410~930)
- Connection for Pressure Differential Switch - Easily detect clog in oil filter
- INT69HBY supporting motor and discharge (PTC) temperature sensor protection as well as Phase Loss and Phase Reversal at Start Up Only

Ports

- External Oil Cooler
- Liquid Injection (into screw chamber)
- Economizer

Connections

Discharge Stop Valve	4"					
Discharge Check Valve	4"					
Suction Stop Valve	5"					
Economizer	1 1/8" solder					
Liquid Injection (chamber)	5/8" flare					
		A	B	C	D	E
Discharge Side	Copper Pipe Sizing 4 1/8"	2.99"	5.71"	1.97"	4.14"	4.56"
Suction Side	Copper Pipe Sizing 5 1/8"	2.95"	6.85"	1.38"	5.14"	5.77"



MCC & LRA

MODEL	Hertz	Volts	Maximum Continuous Current	Y-Δ	
				Locked Rotor Amps	
RC2-790A R22, R407C, R404A, R507A, R134a	60	460	402	1495	
RC2-790B R22, R407C, R404A, R507A, R134a	60	460	494	2330	

* Ex Mark for explosion proof equipment
 II Equipment group II
 2G Equipment suitable for zone I

Ex Explosion proof according to directive 2014/34EU
d Flameproof
c Constructional safety

IIB Gas group: Ethylene
T4 Max. surface temperature: 135 °C



RC2-830-ExP Screw Compressor Models A&B

Specifications



* **Ex II 2 G Ex d IIB T4 Gb** (Electrical parts)
II 2 G c IIB T4 (Non-Electrical parts)

New explosion proof design Screw compressor dedicated to HFC, HCFC & flammable gases. Used in explosive atmospheres.

Compressor	Displacement	CFM	60 Hz	584
	Rated Speed	Rpm	60 Hz	3550
	Volume Ratio	Vi		2.6 (standard other Vi available)
	Capacity Control	%		30%,50%,75% & 100% Step Capacity Control, 50%~100% Continuous Stepless Capacity Controls
	Lubrication	Differential Pressure Feed Lubricant		
Motor	Type	3 phase, 2 pole, squirrel cage, induction motor		
	Starting	Y-Delta, PWS		
	Voltage	208, 220, 230, 380, 440, 460, 480, 575		
	Nominal HP	183 RC2-830A		
	Nominal HP	290 RC3-830B		
Lubricant Charge	Gallons	7.4		
Oil Heater	Watts	300W		
Hydrostatic Pressure Test	lb/in ² G	597		
Weight	Pounds	2679 Comp. (skid 86x43x39-Crated weight 3393)		

Standard Compressors Accessories

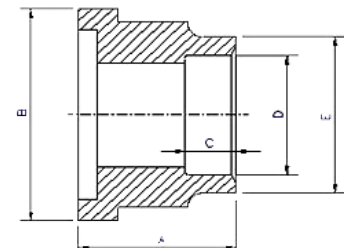
- Available for part winding start or star-delta start
- Refrigerant flows through outside of motor winding to provide the most efficient motor cooling
- Built-in PT1000 installed in motor winding
- Horizontal Discharge Check Valve
- Discharge Temperature Thermistor & Motor Temperature Thermistor - Effectively protect compressor in advance when any abnormal alarm occurs
- Explosion-proof solenoid coil
- Liquid Injection and Oil Cooler Function (Port & Stop Pin)
- Oil Level Switch - Ensure sufficient lubricant in compressor for better lubrication, capacity control, cooling and sealing
- Heater 150W (RC100~370) - 300W (RC410~930)
- Connection for Pressure Differential Switch - Easily detect clog in oil filter
- INT69HBY supporting motor and discharge (PTC) temperature sensor protection as well as Phase Loss and Phase Reversal at Start Up Only

Ports

- External Oil Cooler
- Liquid Injection (into screw chamber)
- Economizer

Connections

Discharge Stop Valve	4"					
Discharge Check Valve	4"					
Suction Stop Valve	5"					
Economizer	1 1/8" solder					
Liquid Injection (chamber)	5/8" flare					
		A	B	C	D	E
Discharge Side	Copper Pipe Sizing 4 1/8"	2.99"	5.71"	1.97"	4.14"	4.56"
Suction Side	Copper Pipe Sizing 5 1/8"	2.95"	6.85"	1.38"	5.14"	5.77"



MCC & LRA

MODEL	Hertz	Volts	Maximum Continuous Current	Y-Δ
				Locked Rotor Amps
RC2-830\A R22, R407C, R404A, R507A, R134a	60	460	419	1635
RC2-830\B R22, R407C, R404A, R507A, R134a	60	460	531	2480

* **Ex** Mark for explosion proof equipment
II Equipment group II
2G Equipment suitable for zone I

Ex Explosion proof according to directive 2014/34EU
d Flameproof
c Constructional safety

IIB Gas group: Ethylene
T4 Max. surface temperature: 135 °C



RC2-930-ExP Screw Compressor Models A&B

Specifications



* Ex II 2 G Ex d IIB T4 Gb (Electrical parts)
 II 2 G c IIB T4 (Non-Electrical parts)

New explosion proof design Screw compressor dedicated to HFC, HCFC & flammable gases. Used in explosive atmospheres.

Compressor	Displacement	CFM	60 Hz	657
	Rated Speed	Rpm	60 Hz	3550
	Volume Ratio	Vi		2.6 (standard other Vi available)
	Capacity Control	%		35%,50%,75% & 100% Step Capacity Control, 50%~100% Continuous Stepless Capacity Controls
	Lubrication	Differential Pressure Feed Lubricant		
Motor	Type	3 phase, 2 pole, squirrel cage, induction motor		
	Starting	Y-Delta, PWS		
	Voltage	208, 220, 230, 380, 440, 460, 480, 575		
	Nominal HP	212 RC2-930A		
	Nominal HP	334 RC2-930B		
Lubricant Charge	Gallons	7.4		
Oil Heater	Watts	300W		
Hydrostatic Pressure Test	lb/in ² G	597		
Weight	Pounds	2734 Comp. (Skid -Crated)		

Standard Compressors Accessories

- Available for part winding start or star-delta start
- Refrigerant flows through outside of motor winding to provide the most efficient motor cooling
- Built-in PT1000 installed in motor winding
- Horizontal Discharge Check Valve
- Discharge Temperature Thermistor & Motor Temperature Thermistor - Effectively protect compressor in advance when any abnormal alarm occurs
- Explosion-proof solenoid coil
- Liquid Injection and Oil Cooler Function (Port & Stop Pin)
- Oil Level Switch - Ensure sufficient lubricant in compressor for better lubrication, capacity control, cooling and sealing
- Heater 150W (RC100~370) - 300W (RC410~930)
- Connection for Pressure Differential Switch - Easily detect clog in oil filter
- INT69HBY supporting motor and discharge (PTC) temperature sensor protection as well as Phase Loss and Phase Reversal at Start Up Only

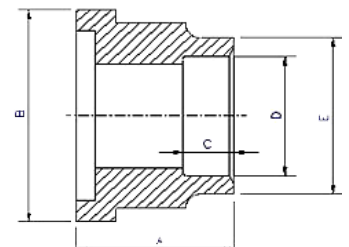
Ports

- External Oil Cooler
- Liquid Injection (into screw chamber)
- Economizer

Connections

Discharge Stop Valve	4"
Discharge Check Valve	4"
Suction Stop Valve	5"
Economizer	1 1/8" solder
Liquid Injection (chamber)	5/8" flare
Discharge Side	Copper Pipe Sizing 4 1/8"
Suction Side	Copper Pipe Sizing 5 1/8"

	A	B	C	D	E
Discharge Side	2.99"	5.71"	1.97"	4.14"	4.56"
Suction Side	2.95"	6.85"	1.38"	5.14"	5.77"



MCC & LRA

MODEL	Hertz	Volts	Maximum Continuous Current	Y-Δ	
				Locked Rotor Amps	
RC2-930\A R22, R407C, R404A, R507A, R134a	60	460	487	2080	
RC2-930\B R22, R407C, R404A, R507A, R134a	60	460	616	2745	

* Ex Mark for explosion proof equipment
 II Equipment group II
 2G Equipment suitable for zone I

Ex Explosion proof according to directive 2014/34EU
d Flameproof
c Constructional safety

IIB Gas group: Ethylene
T4 Max. surface temperature: 135 °C