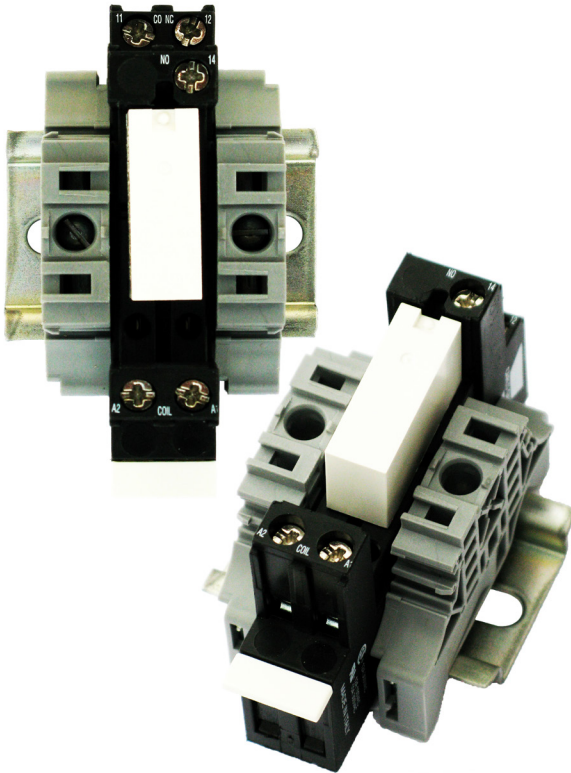




# MCS-AO-RELAY

## Description & Specifications



Part # MCS-AO-RELAY

### Specifications

Contact Rating.....	8.0 amp Resistive Load
Max. Switching Current .....	10.0 amp Resistive Load
Motor Loads.....	1/3 HP @ 250 vac
	1/8 HP @ 115vac
Operating Temperature.....	-40°F to +158°F
	(-40°C to +70°C)
Contact Voltage.....	250vac @ 50Hz
Insulation Rating.....	4kV 18mm
Contact Arrangement.....	Single Pole NO/NC SPST
Life.....	100,000 Cycles @ 8A 250vac
Coil Voltage .....	.9-21vdc
Connection .....	Screw Terminals
Relay Mounting.....	Socket Mounted DIN Rail
Mounting Holes.....	Mounts on a backplane using
	(2) #6 sheet metal screws
Dimensions.....	1-5/8" x 3-1/8" x 1-3/4"
Operating Time.....	≤ 9 ms
Inside Protection (IEC 144) .	IP 67 sealed
Housing .....	M15 Completely Sealed Relay
Relay Socket Rating.....	12 amp @ 300vac

### Kit Components

The complete MCS-AO-RELAY includes:

- One (1) miniature socket mount mechanical relay
- One (1) SPST DIN rail relay base
- One (1) DIN rail mounting track
- Two (2) DIN rail end brackets
- Two (2) #4, (2) #6 mounting screws, (2) washers



Revision- 2015-07-14

### Description

The **MCS-AO-RELAY** is a miniature sealed relay used to convert an analog output to a relay output on a DIN rail mounted socket assembly with screw terminals & clamping plates.

When properly installed in an approved electrical enclosure the MCS-AO-RELAY can furnish additional relay outputs using available analog outputs after all relay outputs are in use, eliminating the need for a expansion output board.

The conversion of the analog output signal to a normally open/normally closed single pole switch allows versatility for the remote installation of an output contact when space is an issue.