

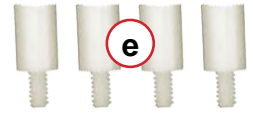
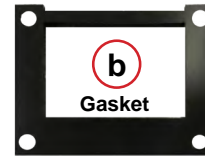
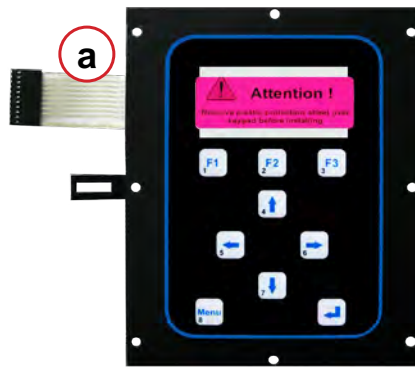


# MAG-KEYPAD-ONLY INSTALLATION

MAG-KEYPAD-PANL, MAG-KEYPAD-DOOR

### KIT CONTAINS:

- a. New MAG-KEYPAD-ONLY
- b. Gasket
- c. New Lexan Cover
- d. 4 Small Standoffs 1/4"
- e. 4 Medium Standoffs 1/2"
- f. 4 Large Standoffs 11/16"
- g. 4 Nylon Hex Nuts



#6-32 x 1/2" male/female nylon hex threaded standoffs



#6-32 x 11/16" Male/Female Nylon Hex Threaded Standoffs



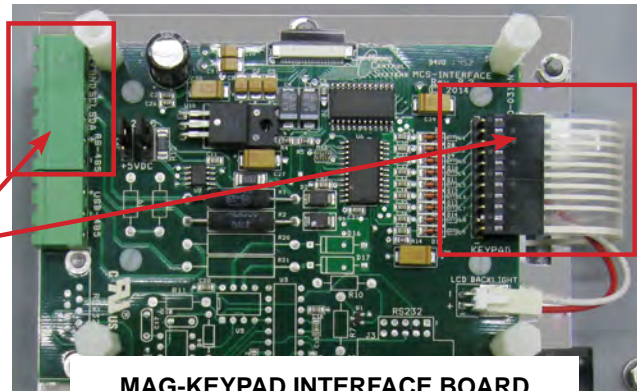
#6-32 Nylon Hex Nuts

### Tools needed for removal:

- 5/16" Nut Driver
- Needle nose or regular pliers



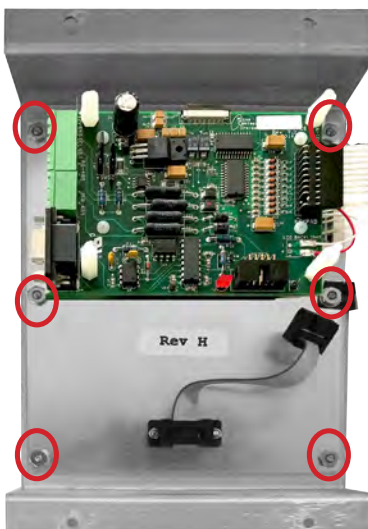
- 1 STOP THE UNIT (RUN/STOP SWITCH TO OFF POSITION)
- 2 TURN POWER OFF TO THE UNIT
- 3 UNPLUG CABLE FROM MCS-MAGNUM AND UNPLUG RIBBON CABLE FROM OLD KEYPAD.



MAG-KEYPAD INTERFACE BOARD

### 4 Removal of Old MAG-KEYPAD

MAG-KEYPAD PANL



REV H KEYPAD  
Remove 6 nuts from old Keypad  
MAG-DOOR or MAG-KEYPAD-PANL.  
Unplug the RS232 if installed.



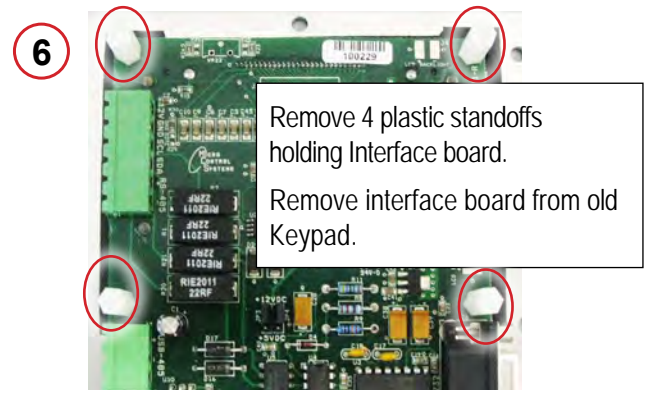
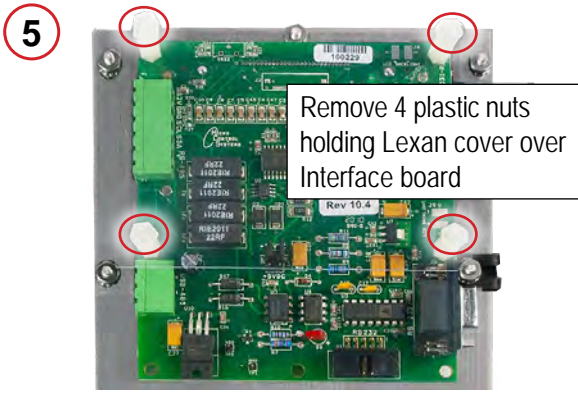
MAG-KEYPAD DOOR



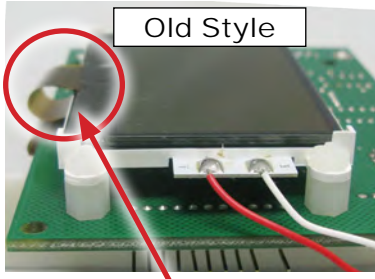
REV J KEYPAD  
Remove 8 nuts holding  
old Keypad from MAG-DOOR or  
MAG-KEYPAD-PANL.



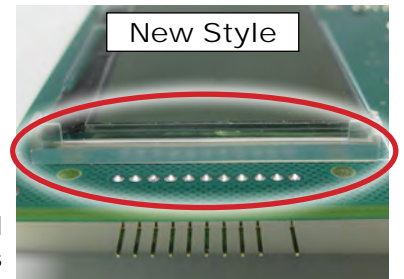
**Continued on back of this sheet.**



**7 Determine which style LCD that is installed on your Keypad interface board.**



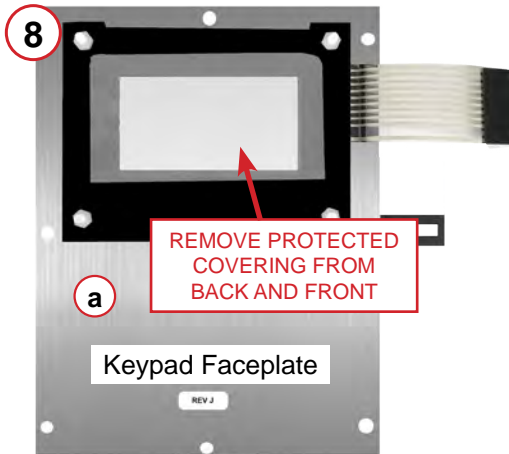
**OLD STYLE** will require (e) medium #6-32 x 1/4" nylon hex standoffs  
←



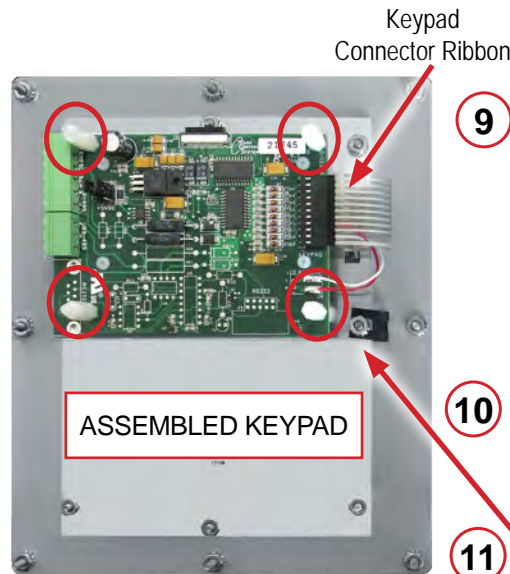
→  
**NEW STYLE** will require (d) small #6-32 x 1/2" nylon hex standoffs

LCD mounted on 4 standoffs and connected with flex ribbon cable

LCD soldered on MAG-KEYPAD Interface board



Screw the correct standoffs onto the new Keypad. Place Gasket over standoffs as shown in the photo. Make sure you remove any protective covering from the Keypad window.



**9** Lay your Keypad Interface board onto the 4 standoffs (d or e). Take the 4 larger plastic standoffs (f) and screw onto the smaller standoffs (e or f) holding the interface board in place. PLUG THE KEYPAD CONNECTOR RIBBON ONTO THE BOARD.

**10** Secure assembled MAG-KEYPAD to your MAG-KEYPAD-PANL or MAG-KEYPAD-DOOR with 6 or 8 nuts that were removed.

**11** Fold over black ground strap and secure with washer and nut.

**12** Attach Lexan Cover (b) onto 4 large standoffs (d), secure with 4 plastic nuts (e).

Any questions regarding this release, contact: [support@mcscontrols.com](mailto:support@mcscontrols.com)

Micro Control Systems, Inc. 5580 Enterprise Parkway Fort Myers, Florida 33905  
(239)694-0089 FAX: (239)694-0031 [www.mcscontrols.com](http://www.mcscontrols.com)

Information contained in this document has been prepared by Micro Control Systems, Inc. and is copyright © protected 2021. Copying or distributing this document is prohibited unless expressly approved by MCS.