



Total Solution for all your Control Needs

Case Study

LINDENWOOD BUILDING UPGRADE

Old Equipment:

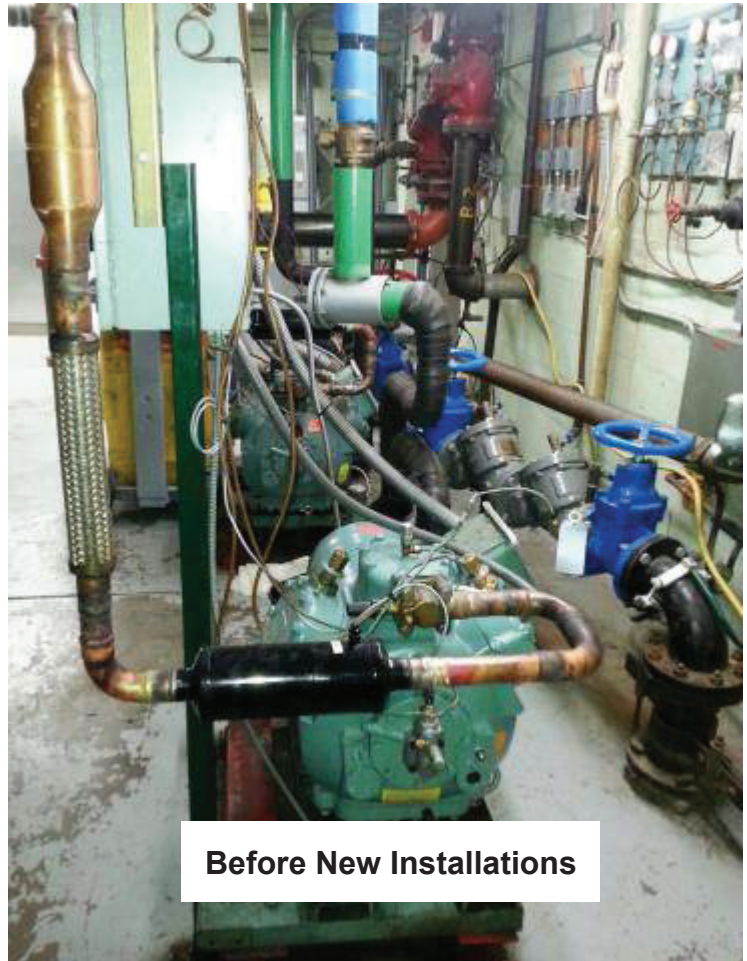
- 2 Circuits on R-22
- Carrier 06E299, 208v.
- X-L Start
- 2 TXV's per circuit
- Air cool condenser

Steps Taken: New Installations

- MCS-MAGNUM-LB
- Hanbell RC2-140
- Yaskawa A-1000 VFD
- MCS-EXV-DRIVER & Sporlan EXV's

Results:

- Unit online for over a year
- No issues
- More precise control!



CONTRACTOR

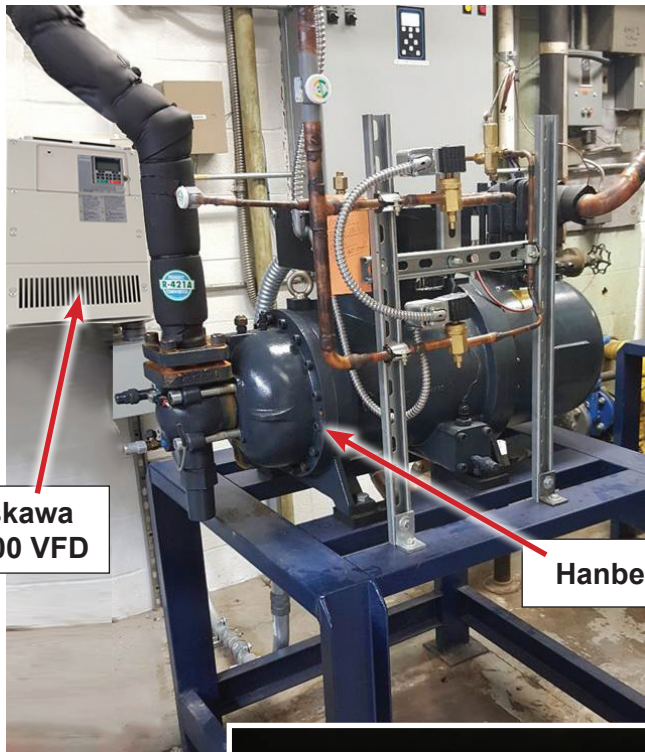




5580 Enterprise Pkwy., Fort Myers, FL 33905
Office: (239) 694-0089 Fax: (239) 694-0031

Total Solution for all your Control Needs

Controls and Hanbell Upgrades Made



Yaskawa A1000 VFD

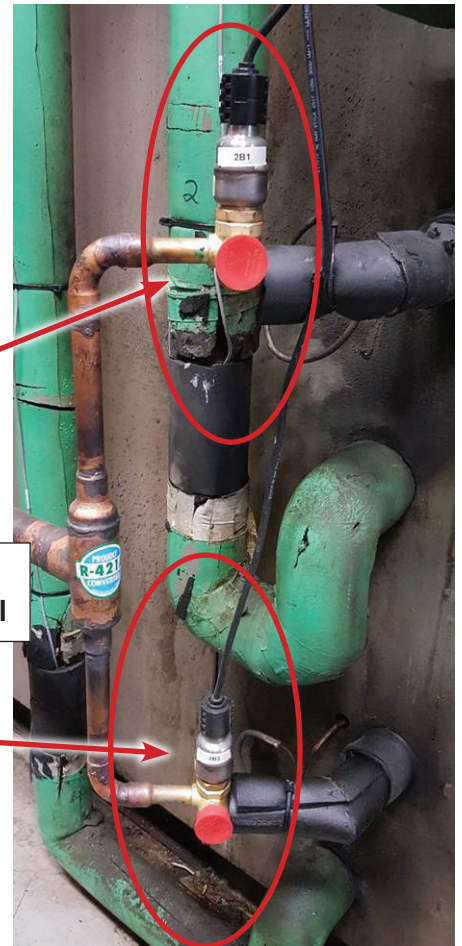
Hanbell RC2-140

System was converted to R421A !



MCS CONTROL PANEL

MCS EXV DRIVERS
Mounted inside control panel



CONTRACTOR

