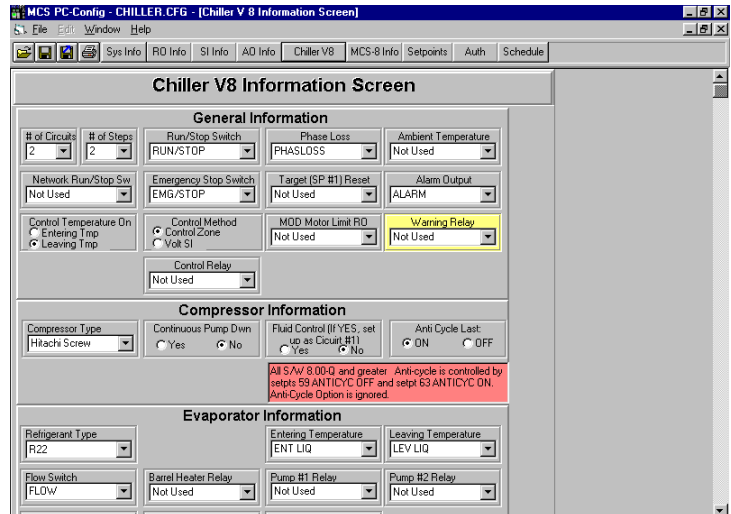


## The MCS PC-Config Specifications & Description

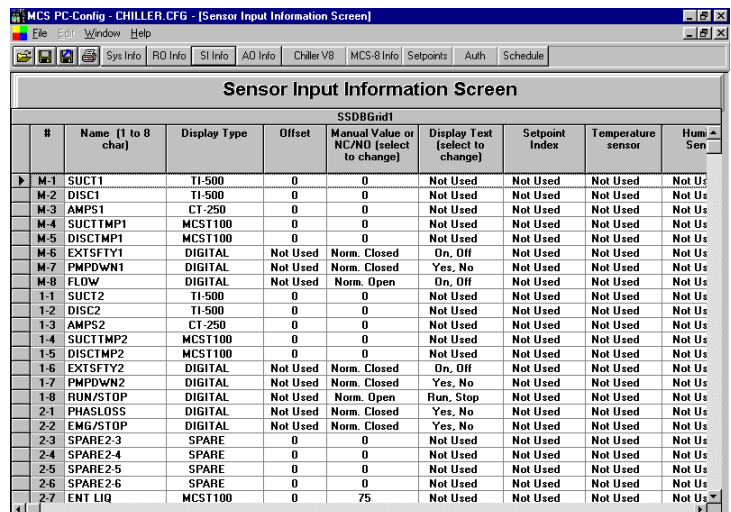
### Product Features

- Microsoft Windows based
- Software written in Microsoft Visual Basic
- Generates configuration files for the MCS-8 micro controller
- Supports all versions of MCS-8 software
- User friendly interface
- Develop points list
- Develop setpoints
- Develop control strategies
- Develop multiple authorization levels to limit end user ability to make changes
- Develop operation schedules
- Change sensor input and relay output labels



### System Requirements

- PC with a Pentium-class processor
- Microsoft Windows 95 or later operating system
- 32MB of RAM
- Super VGA display capable of displaying at least 256 colors



The screenshot shows the 'Sensor Input Information Screen' with a table titled 'SSDBGrid1' containing the following data:

#	Name (1 to 8 char)	Display Type	Offset	Manual Value or NC/NO (select to change)	Display Text (select to change)	Setpoint Index	Temperature sensor	Hum Sen
M-1	SUCT1	TI-500	0	0	Not Used	Not Used	Not Used	Not Us
M-2	DISC1	TI-500	0	0	Not Used	Not Used	Not Used	Not Us
M-3	AMPS1	CT-250	0	0	Not Used	Not Used	Not Used	Not Us
M-4	SUCTMP1	MCST100	0	0	Not Used	Not Used	Not Used	Not Us
M-5	DISCTMP1	MCST100	0	0	Not Used	Not Used	Not Used	Not Us
M-6	EXTSFTY1	DIGITAL	Not Used	Norm. Closed	On, Off	Not Used	Not Used	Not Us
M-7	PMPDWN1	DIGITAL	Not Used	Norm. Closed	Yes, No	Not Used	Not Used	Not Us
M-8	FLOW	DIGITAL	Not Used	Norm. Open	On, Off	Not Used	Not Used	Not Us
1-1	SUCT2	TI-500	0	0	Not Used	Not Used	Not Used	Not Us
1-2	DISC2	TI-500	0	0	Not Used	Not Used	Not Used	Not Us
1-3	AMPS2	CT-250	0	0	Not Used	Not Used	Not Used	Not Us
1-4	SUCTMP2	MCST100	0	0	Not Used	Not Used	Not Used	Not Us
1-5	DISCTMP2	MCST100	0	0	Not Used	Not Used	Not Used	Not Us
1-6	EXTSFTY2	DIGITAL	Not Used	Norm. Closed	On, Off	Not Used	Not Used	Not Us
1-7	PMPDWN2	DIGITAL	Not Used	Norm. Closed	Yes, No	Not Used	Not Used	Not Us
1-8	RUN/STOP	DIGITAL	Not Used	Norm. Open	Run, Stop	Not Used	Not Used	Not Us
2-1	PHASLOSS	DIGITAL	Not Used	Norm. Closed	Yes, No	Not Used	Not Used	Not Us
2-2	EMG/STOP	DIGITAL	Not Used	Norm. Closed	Yes, No	Not Used	Not Used	Not Us
2-3	SPARE2-3	SPARE	0	0	Not Used	Not Used	Not Used	Not Us
2-4	SPARE2-4	SPARE	0	0	Not Used	Not Used	Not Used	Not Us
2-5	SPARE2-5	SPARE	0	0	Not Used	Not Used	Not Used	Not Us
2-6	SPARE2-6	SPARE	0	0	Not Used	Not Used	Not Used	Not Us
2-7	ENT LIQ	MCST100	0	75	Not Used	Not Used	Not Used	Not Us

### Product Description

PC-Config software is part of the MCS Support System. Its purpose is to build the configuration files for the MCS-8 micro controller. Through this program information relating to the particular installation such as the points list, setpoints and control strategies are specified. Once a configuration file has been built it can be uploaded into a live system using the transmit function found in PC-Connect.

This one program supports all versions and releases of MCS-8 software. Based upon the type of configuration file that is loaded, the program will only display screens that relate to the type of configuration file.

PC-Config is available on CD including a printed user's manual. Program updates can be downloaded directly from the MCS website.