



# APPLICATION NOTE

## APP #129

### Revision History

Date	Author	Description
10-19-17	DEW	Setup from Touchscreen Manual

# Changing MCS-Touchscreen LINUX IP ADDRESS

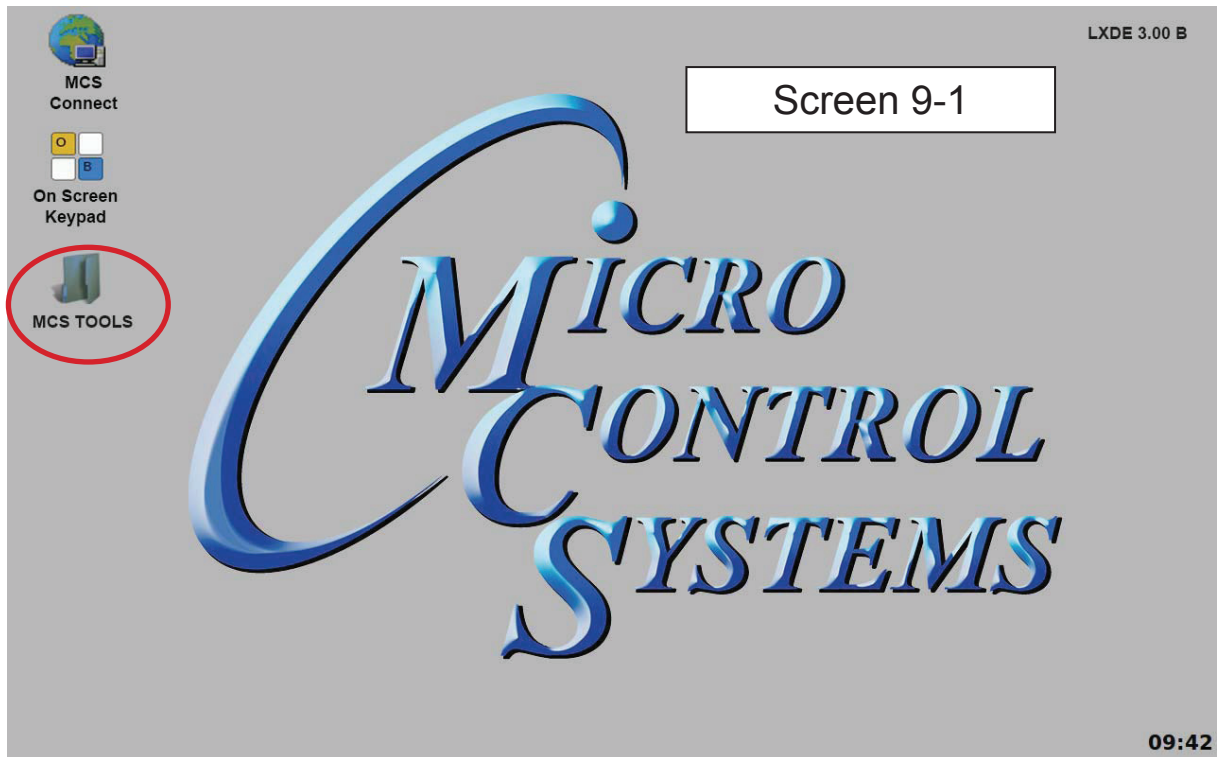
Any questions regarding this release, contact: [support@mcscontrols.com](mailto:support@mcscontrols.com)

Micro Control Systems, Inc. 5580 Enterprise Parkway Fort Myers, Florida 33905  
(239)694-0089 FAX: (239)694-0031 [www.mcscontrols.com](http://www.mcscontrols.com)

Information contained in this document has been prepared by Micro Control Systems, Inc. and is copyright © protected 2017.  
Copying or distributing this document is prohibited unless expressly approved by MCS.

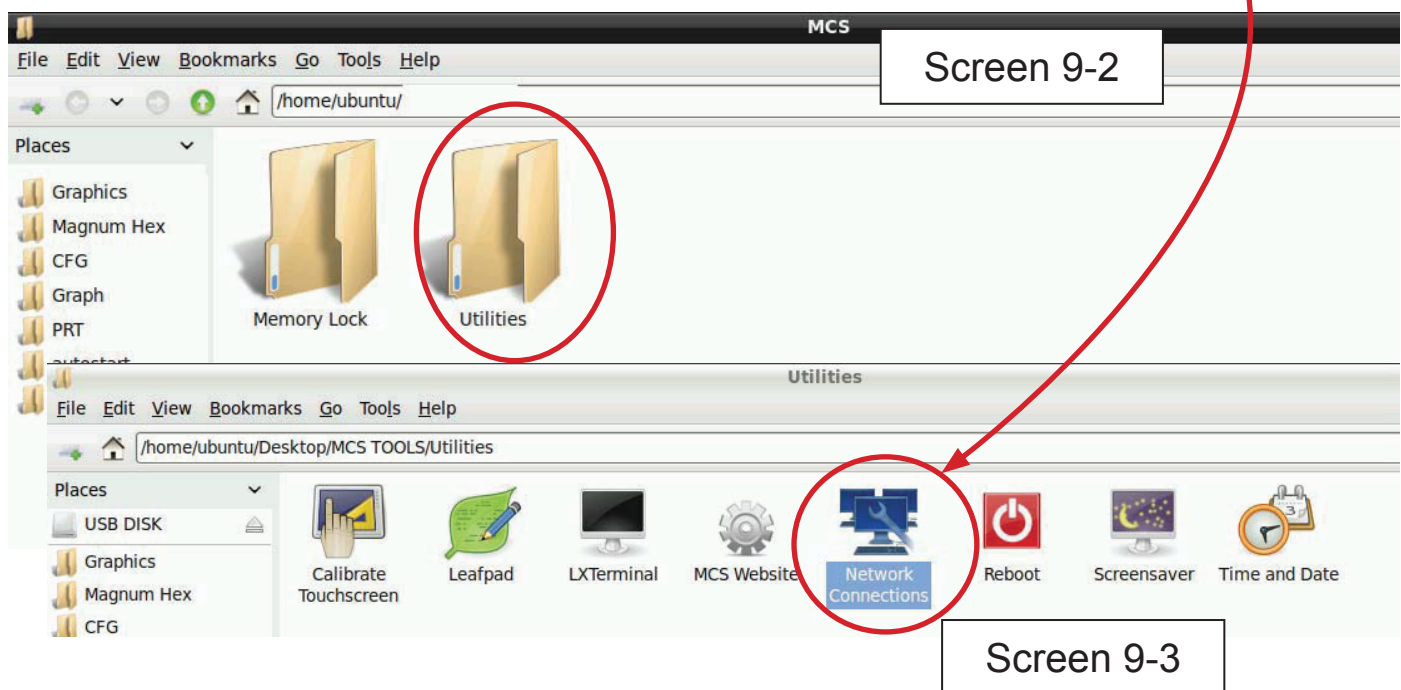
## 7.1. SETTING UP NETWORK FOR COMMUNICATION WITH YOUR CONTROLLER

At the touchscreen main screen, click on 'MCS TOOLS' folder' as seen screen 9-1.



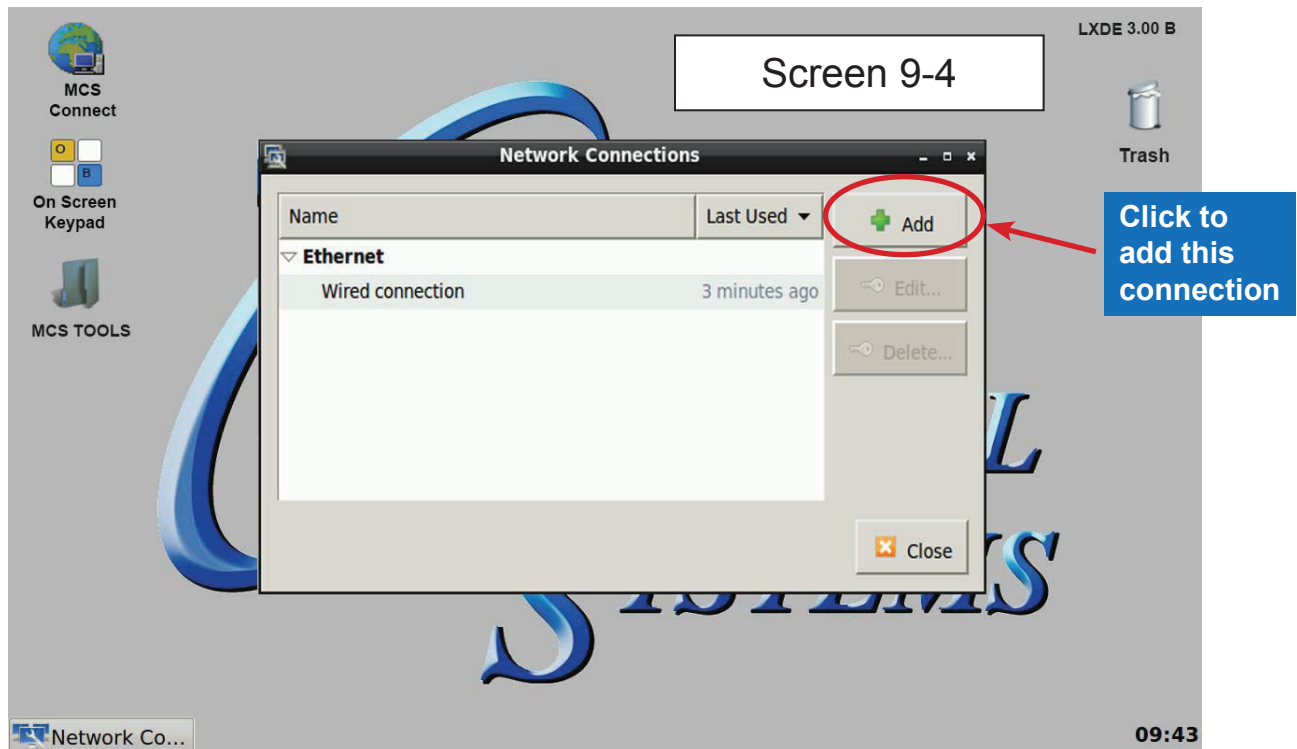
### 7.1.1 UTILITIES FOLDER

Screen 9-2 appears, click on 'Utilities' to view contents of folder. Click on 'Network Connections' as shown in screen 9-3.

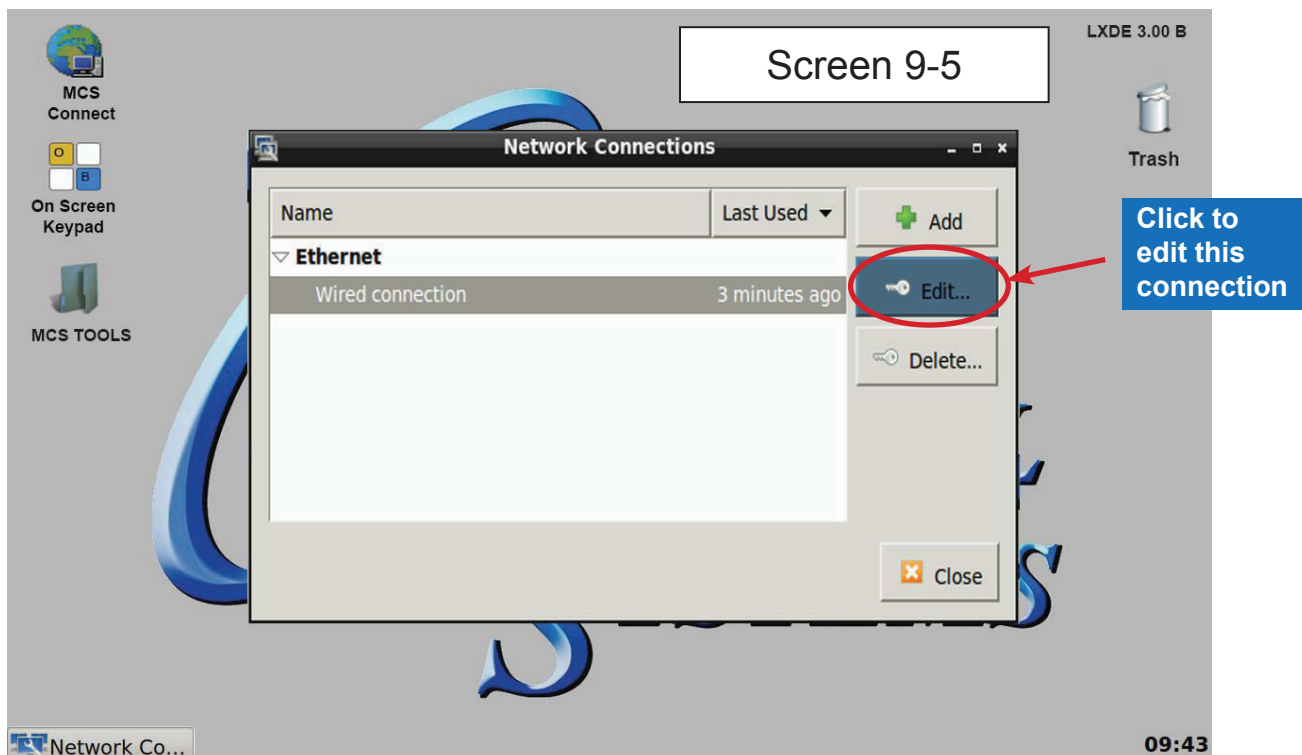


## 7.2. Network Communication Screen

Next display, screen 9-4 shows network communication screen. Your touchscreen will show 'Wired connection', click to add.



### 7.2.1 Screen 9-5, click to 'edit' this connection.



## 7.2.2 Adding IP Address

On screen 9-6, set **'Method'** to **'Manual'** click on **'IPv4'** than click on **'Address'**, enter the IP address, the netmask and gateway addresses. Click to save to touchscreen memory.

