



APPLICATION NOTE

APP #127

Revision History

Date	Author	Description
06-22-17	DEW	Setup App

Changing Linux and Windows Autostart File

Covered MCS-CONNECT RELEASE 18.13.03 and up

For older versions use App#104 to edit the file

MCS-TOUCHSCREENS

Any questions regarding this release, contact: support@mcscontrols.com

Micro Control Systems, Inc. 5580 Enterprise Parkway Fort Myers, Florida 33905
(239)694-0089 FAX: (239)694-0031 www.mcscontrols.com

Information contained in this document has been prepared by Micro Control Systems, Inc. and is copyright © protected 2017.
Copying or distributing this document is prohibited unless expressly approved by MCS.

Unlocking MCS-TOUCHSCREEN

1.1. Before editing, unlock your Touchscreen.

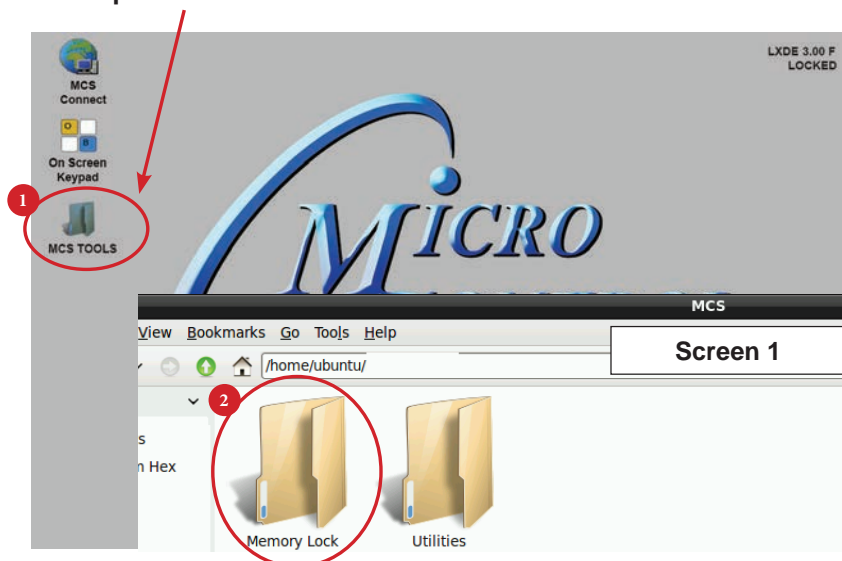
You should be familiar with unlocking and locking your touchscreen depending on the operating system of your touchscreen. If not, you can go to our web site www.mcscontrols.com\Application on the right side of the web screen:

APP# 70 Windows Touchscreen Lock and Unlock Procedure.

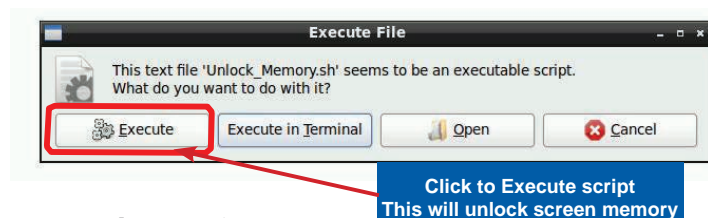
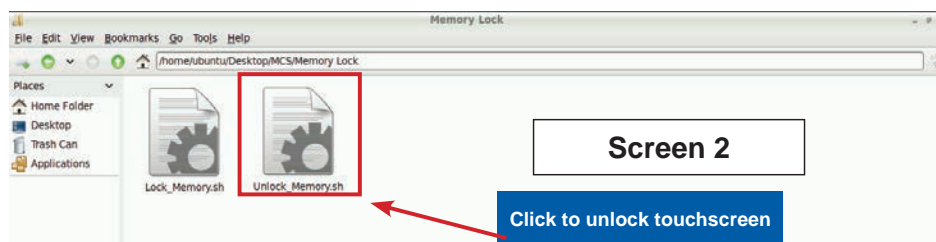
Follow the procedure below for unlocking the touchscreen running Linux software.

1.2. Linux Software - Start by Unlocking the Touchscreen.

1. Click on the 'MCS TOOLS' folder on the desktop, 'MEMORY LOCK' sub folder will appear when this file is opened..



2. Double click on the 'Memory lock' folder
3. Double click on the 'Unlock Memory' icon



4. Next screen, click on 'Execute'
5. Touchscreen will perform a restart

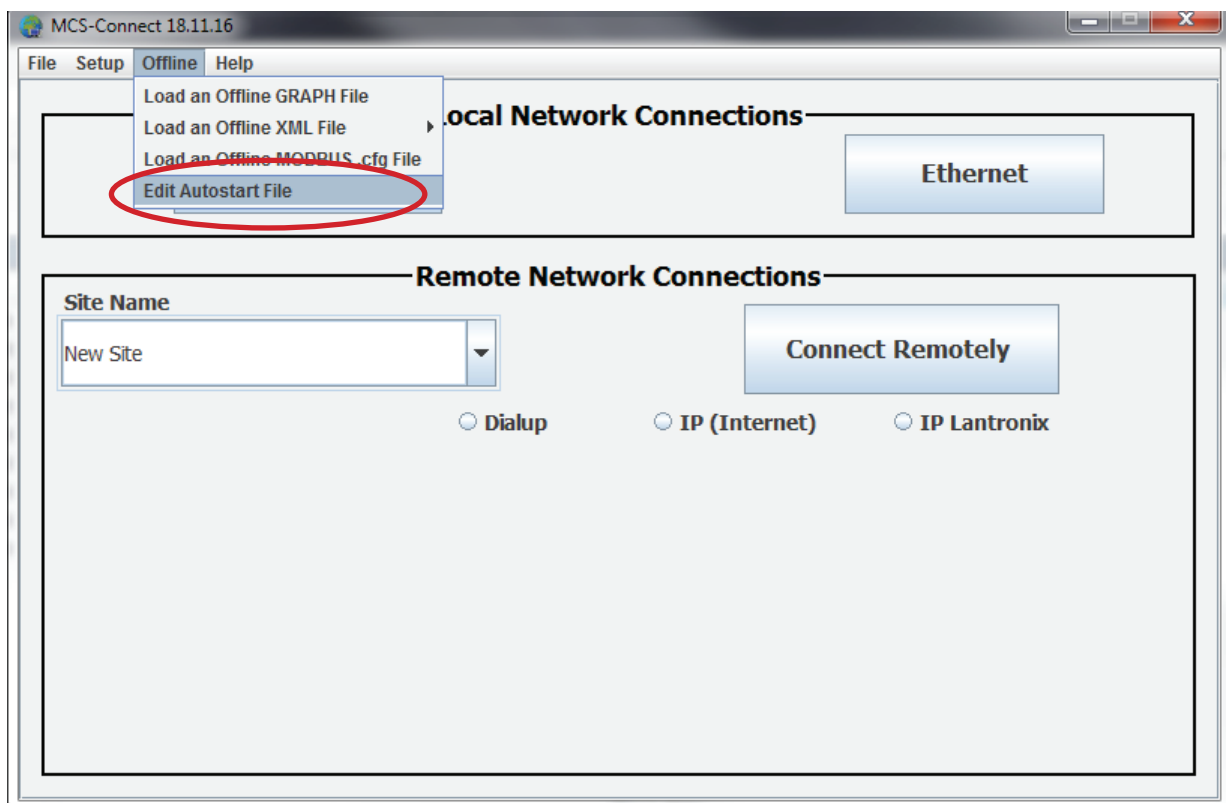
Changing Startup File - MCS-TOUCH

1.3. Open 'On Screen Keypad' and MCS CONNECT

1. **Navigate to the 'On Screen Keypad' on your desktop as shown below.**
Click with stylus or touch to open.

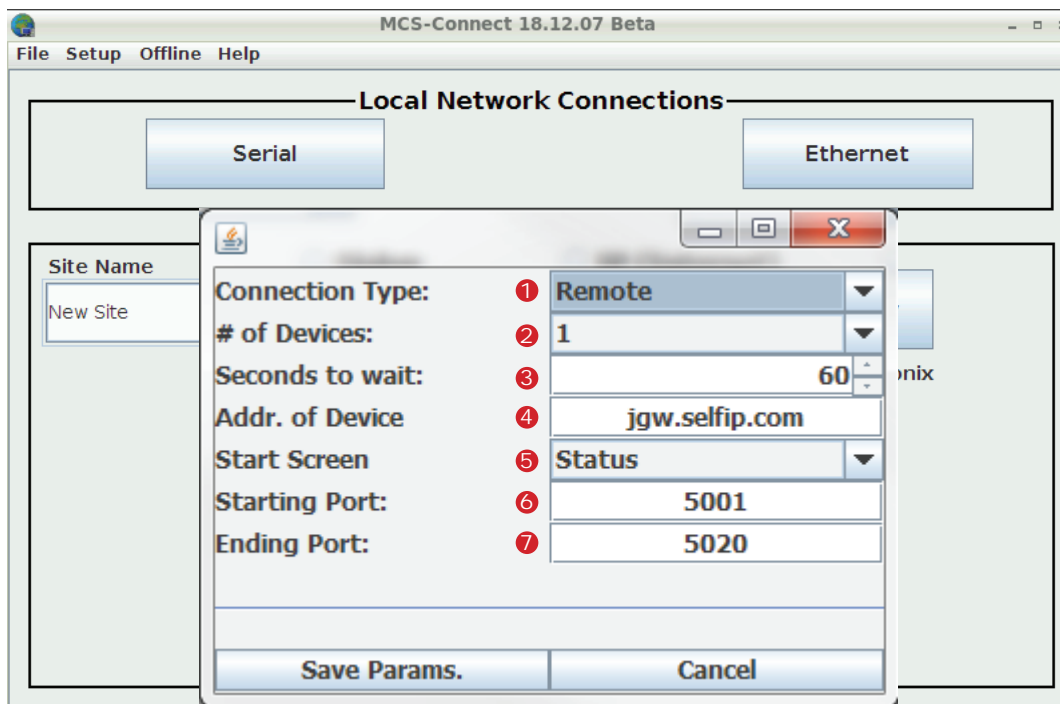


2. **Click or touch on the 'MCS CONNECT' on desktop, main screen will open as shown below.**
3. **Click on 'EDIT AUTOSTART FILE'.**

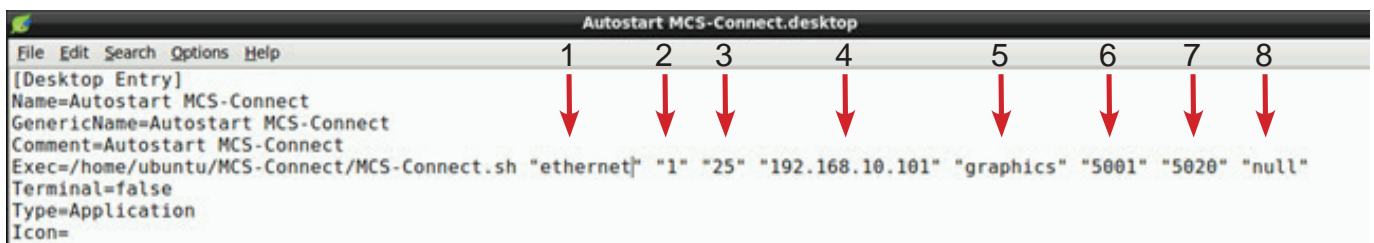


4. Proceed to next step.

5. The following screen will open. Below is a description of the different 'Arguments'.



Descriptions of Arguments that can be changed in the Autostart file:



Editing the 'AUTOSTART MCS-CONNECT' file (see corresponding numbers above).

1. **ETHERNET** = This argument can be set to "ethernet", "serial", "remote" or "lantronix" depending on the type of connection used to connect to the Magnum.
2. **'1'** = This argument is the number (1-60) of Magnums MCS-Connect is to look for on the network.
3. **'25'** = This argument is the time in seconds MCS-Connect waits while searching for the number of Magnums specified in argument 6 before creating an error popup message.
4. **192.168.0.254** = This argument is the address of the Magnum that you want to connect to upon auto start. If argument 1 is set to "ethernet" then enter the IP address of the Magnum. Otherwise if argument 1 is set to "serial" then enter the Magnum RS485 address.
5. **GRAPHICS** = This argument determines which screen MCS-Connect will load on auto-start. There are 3 options: "graphics", "status" or "transmit".
6. **5001** = If argument #5 is "transmit", this argument is used for the file path of the configuration to transmit. Otherwise, if argument #1 is "remote" or "lantronix" this argument is used to pass in the starting port for these connection types.
7. **5020** = This argument is only used when argument #1 is "remote" to pass in the ending port for a remote connection.
8. **Auth. Level** = This argument allows the user to pass in a keyword that starts MCS-Connect with a preset Authorization Level.



APP 126 is available at <http://www.mcscontrols.com/appNotes.html> to set the Graphics Lock feature which ensures that unauthorized users cannot navigate out of the Graphics screen.

Command Line Arguments Explanation

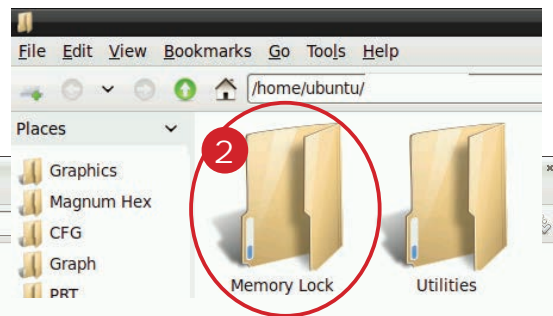
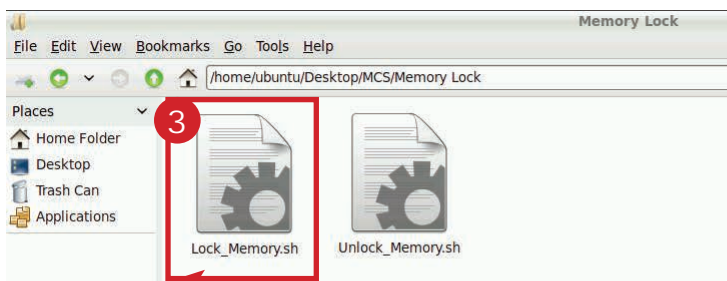
Argument #1	Argument #2	Argument #3	Argument #4
"serial"	# of controllers to look for	# seconds to search	MCS address of controller to connect to
"ethernet"	# of controllers to look for	# seconds to search	IP address of controller to connect to
"remote"	# of controllers to look for	# seconds to search	IP address of controller to connect to
"lantronix"	# of controllers to look for	# seconds to search	IP address of controller to connect to

Argument #5	Argument #6	Argument #7	Argument #8
"graphics"/"status"/"transmit"	null/null/cfg file address	null	Desired Auth Level code word
"graphics"/"status"/"transmit"	null/null/cfg file address	null	Desired Auth Level code word
"graphics"/"status"	starting port	ending port	Desired Auth Level code word
"graphics"/"status"	starting port	null	Desired Auth Level code word

Re-Locking Touchscreen (follow the 4 steps below)



1. Double click the 'MCS TOOLS' Icon on the Desktop.
2. Double click 'Memory Lock' sub directory.
3. Double click 'Lock Memory'.
4. Click 'EXECUTE'. The touchscreen will reboot.



Click to LOCK touchscreen
Click to Execute

