



APPLICATION NOTE

APP122

Revision History

Date	Author	Description
10-13-16	DEW	Setup

VIEWING MCS-CONNECT HISTORY/GRAPH FILES OFFLINE

Any questions regarding this release, contact: support@mcscontrols.com

Micro Control Systems, Inc. 5580 Enterprise Parkway Fort Myers, Florida 33905
(239)694-0089 FAX: (239)694-0031 www.mcscontrols.com

Information contained in this document has been prepared by Micro Control Systems, Inc. and is copyright © protected 2016.
Copying or distributing this document is prohibited unless expressly approved by MCS.

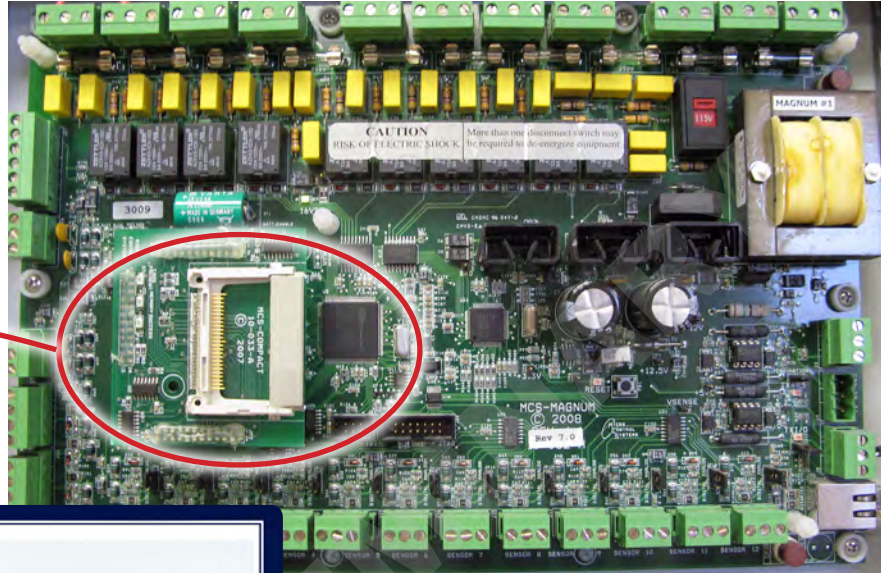
Viewing History/Graph Files Offline

INCREASE THE HISTORY STORAGE CAPACITY FOR YOUR MAGNUM AND VIEW FILES OFFLINE

The **MCS-COMPACT** is a daughterboard able to hold a type 1 or type 2 compact flash memory card. It can easily be installed in the field by plugging it into the expansion pins on the MCS-MAGNUM.

The MCS-COMPACT increases the MCS-MAGNUM's history storage up to a year+ of run data.

MCS-COMPACT provides plug and play capability allowing it to be moved from one MCS-MAGNUM to another MCS-MAGNUM, making it a great service troubleshooting tool.



Part # **MCS-COMPACT**

Kit Includes:

1. Compact Flash 2 Gigabyte Memory Card as shown
2. USB CABLE for connection from Compact Card Reader to PC Computer.
3. Compact Flash Card Reader

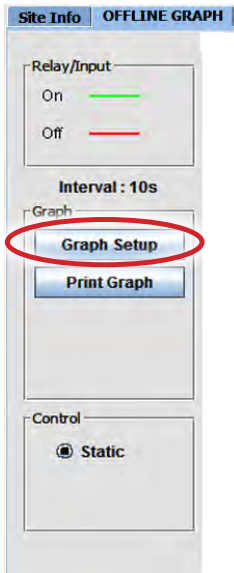


Compact Flash Card Reader



USB Cable
for connection from
Compact Card Reader to
computer

Viewing Magnum History Offline

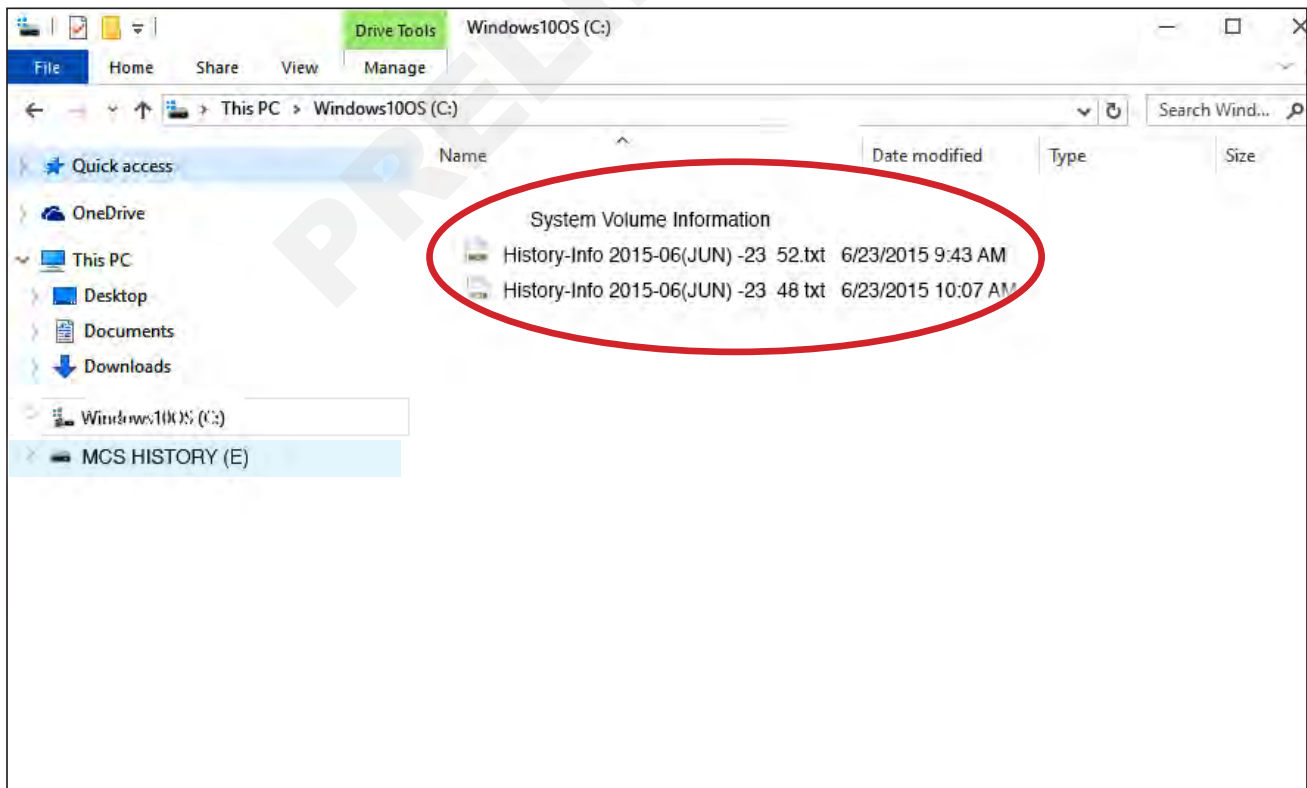


You can view the history/graph files offline. When you are online with MCS-Connect and you go into the graphing screen, MCS-Connect pulls back the current history/trend data from the MCS-Magnum and you can view the data online.

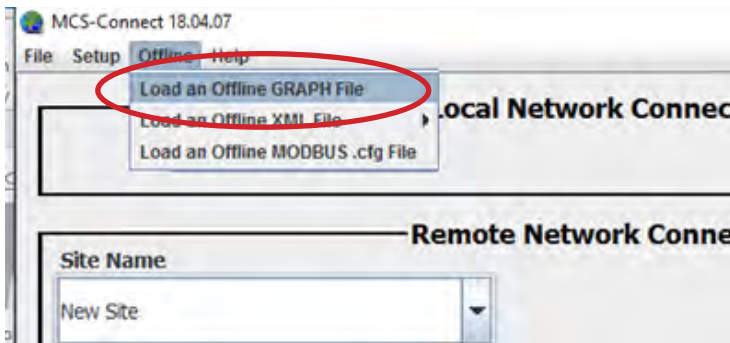
In the graphing screen over on the right hand side there is '**Save History**' button which will save all the data pulled back to a file on your laptop hard drive. This history file can then be viewed at a later time, offline.

The MCS-Magnum can save onto a MCS-COMPACT, a 2G compact flash card, the same history file as in graphing screen "Save History" option. Only difference is MCS-Magnum names the history file and automatically saves the history file when the MCS-Magnum internal history data has filled up. You must remove the compact flash card from the MCS-Magnum and using the USB top Compact flash adapter, read the compact flash card on your laptop like you would read a USB memory stick.

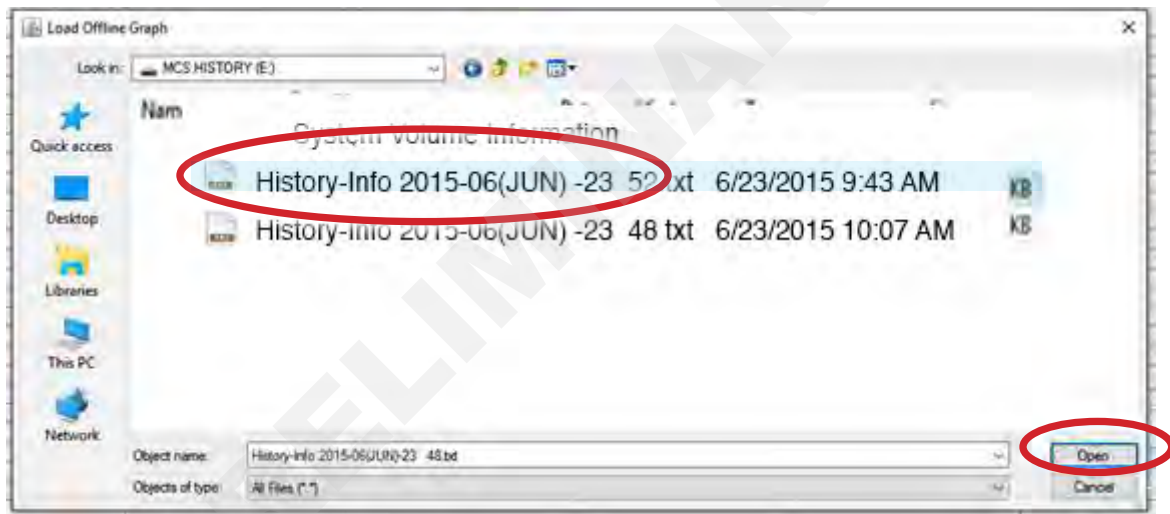
Once you insert the USB Compact adapter (with Compact Flash card plugs into it) into your laptop you will see all the history files saved on it. The MCS-Magnum names the file with 'HISTORY-INFO' plus the date and number. The Number is sequentially numbered starting from 1 every midnight. Please see below an example of history files saved on compact file card. In this example there are two files, both saved on June 6, 2015, one file was the 48 file saved that day and the other being the 52 file saved that day.



Now to view a graphing file that has been saved on the compact flash card or one you manually saved in the graphing screen open MCS-Connect and click on the "Offline" text at the top of the screen. Then in the popup menu click on 'Load an Offline Graph File'.

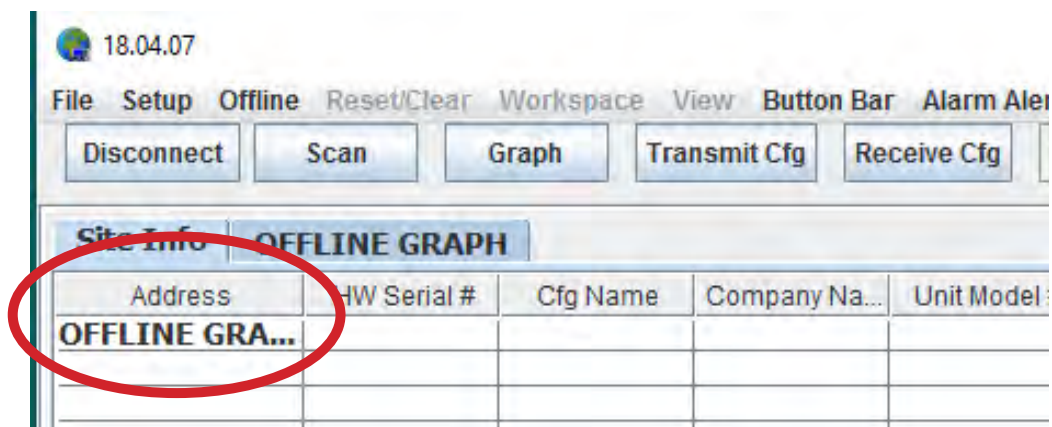


Then you will get a popup file selection window(see below photo) . Move to the folder where the history file has been saved and select the history file you want to view.



Then after you select the file you will see a screen like below.

Click on the offline graph tab and you will see the screen below:



Now it will work just like the normal "Graph" button/screen in MCS-Connect, where you can select which points you want to graph.

The screenshot shows the MCS-Connect software interface. At the top, there is a menu bar with options: File, Setup, Offline, Reset/Clear, Workspace, View, Button Bar, Alarm Alerts, Time, Help, and Live Graph. Below the menu bar are several buttons: Disconnect, Scan, Graph, Transmit Cfg, Receive Cfg, View Only, Load Firmware, Diagnostic Save, and Print. The main window is titled 'OFFLINE GRAPH' and features a grid for plotting data. On the left side, there are controls for 'Relay/Input' (On/Off), 'Interval: 10s', 'Graph' (Graph Setup, Print Graph), and 'Control' (Static). A dialog box titled 'Graph Selected' is overlaid on the graph area. It has tabs for 'ROs', 'AOs', 'SIs & Dis', and 'Interval'. The 'ROs' tab is active, showing a table of points to be graphed. The table has columns for 'RO#', 'Name', and 'Plot'. The 'Plot' column contains checkboxes. To the right of the table are fields for 'Y-Axis' (Maximum: 300, Minimum: 0) and '# of Lines' (10). At the bottom of the dialog box are 'Graph Selected' and 'Cancel' buttons.

RO#	Name	Plot
M-1	SUPPLY FAN	<input type="checkbox"/>
M-2	EnableCool(ul)	<input type="checkbox"/>
M-3	EnableHeat(ul)	<input type="checkbox"/>
M-4	AllowEcon (ul)	<input type="checkbox"/>
M-5	CO2 OK (ul)	<input type="checkbox"/>
M-6	IONIZER (ul)	<input type="checkbox"/>
M-7	SPAREM-7	<input type="checkbox"/>
M-8	SPAREM-8	<input type="checkbox"/>
M-9	SPAREM-9	<input type="checkbox"/>
M-10	ALARM	<input type="checkbox"/>
T-1	EnableEcon(ul)	<input type="checkbox"/>



Providing HVAC/R Control Solutions Worldwide

5580 Enterprise Pkwy. Fort Myers, FL 33905

Office: (239) 694-0089

Fax: (239) 694-0031

www.mcscontrols.com