



APPLICATION NOTE

APP #113 - Upgrading MCS-CONNECT

UPGRADING MCS-CONNECT on MCS-TOUCHSCREENS

Table of Contents

Capacitive Touch	2 to 5
Resistive Touch	6 to 13

Any questions regarding this release, contact:
support@mcscontrols.com

5.2.1.2. Setting a 'Static IP Adress'

On screen 7, click on 'IPv4 Settings'. Then to set a static IP address change the Method to 'Manual'. Create a new IP address by clicking under the 'Address' column. Enter the IP address (Address), Subnet Mask (Netmask), and Default Gateway (Gateway). Then click 'Save' to save these settings. The touchscreen will have to be rebooted for these settings to take effect.

The screenshot shows the 'Editing ethernet' window with the 'IPv4 Settings' tab selected. The 'Method' dropdown is set to 'Manual'. Below, a table lists the IP configuration:

Address	Netmask	Gateway
192.168.18.151	24	192.168.18.1

Annotations include: 'Click on IPv4' pointing to the tab, 'Click on drop down arrow, set to 'Manual'' pointing to the Method dropdown, 'Enter IP address, Netmask & Gateway Address' pointing to the table, and 'Click to save' pointing to the Save button.



Note:

Subnet Mask will change to it's CIDR form, e.g., 255.255.255.0 is the equivalent to 24 in CIDR notation.

SECTION- 6. Update MCS-CONNECT for Capacitive Touch

NOTE: MAKE SURE YOU DOWNLOAD THE LATEST LINUX VERSION OF MCS-CONNECT FROM OUR WEBSITE AT:

<http://www.mcscontrols.com/software.html>

This will walk you through updating MCS-CONNECT on your Capacitive touch screen.

1. Format a new USB drive prior to installing this update, insert into your computer.
2. Go to the MCS-WEBSITE and down the latest MCS-CONNECT for your touchscreen.

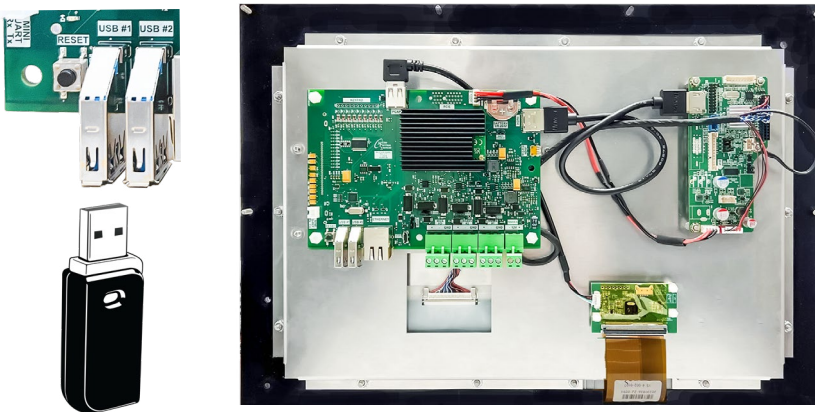


Please Note

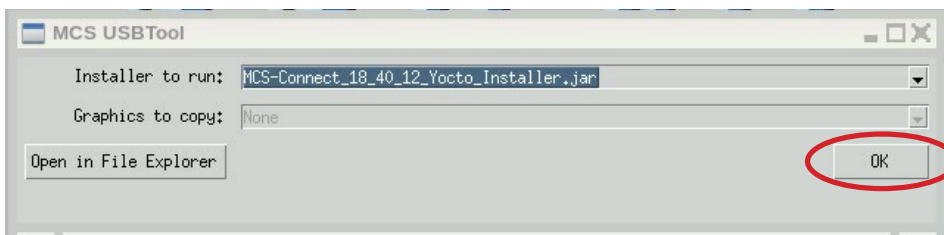
Locate the Serial Number on your touchscreen board and follow the installation procedure for proper deployment.

3. Save the correct file to the attached USB drive on your computer.
4. Insert the USB drive into the back of the touchscreen.

On back of touchscreen, locate the USB PORT as shown on screen 2 and insert the USB drive with the new version of MCS-CONNECT.



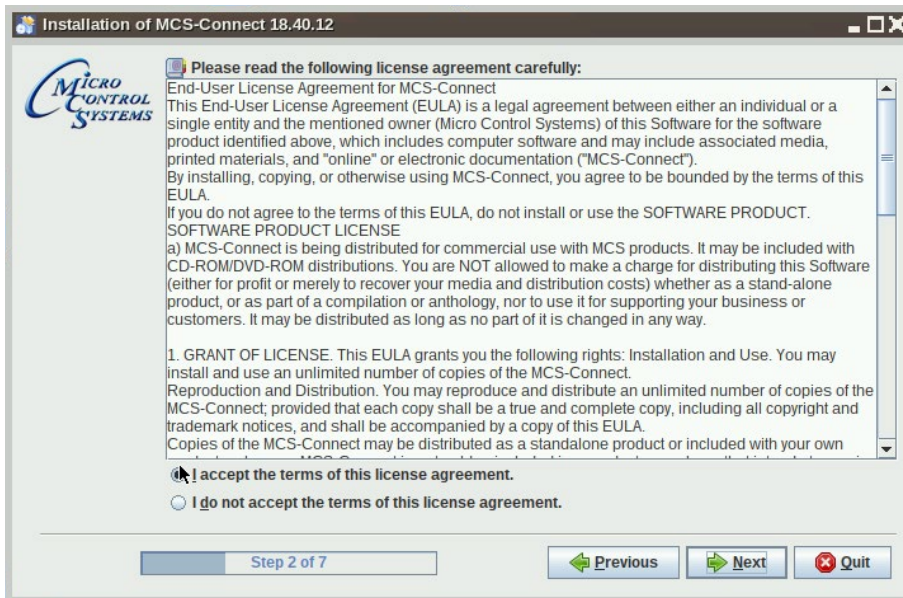
The below screen will appear, click OK.



5. Click 'Next' to continue.



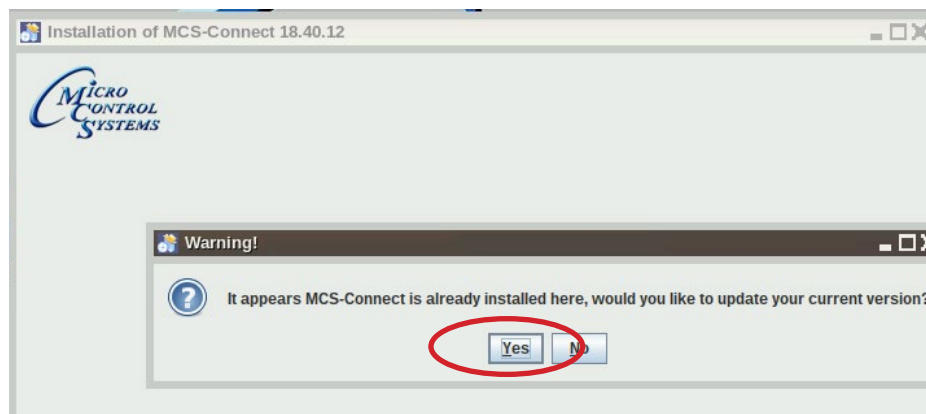
6. Click to accept terms of license agreement, click 'Next' to continue.



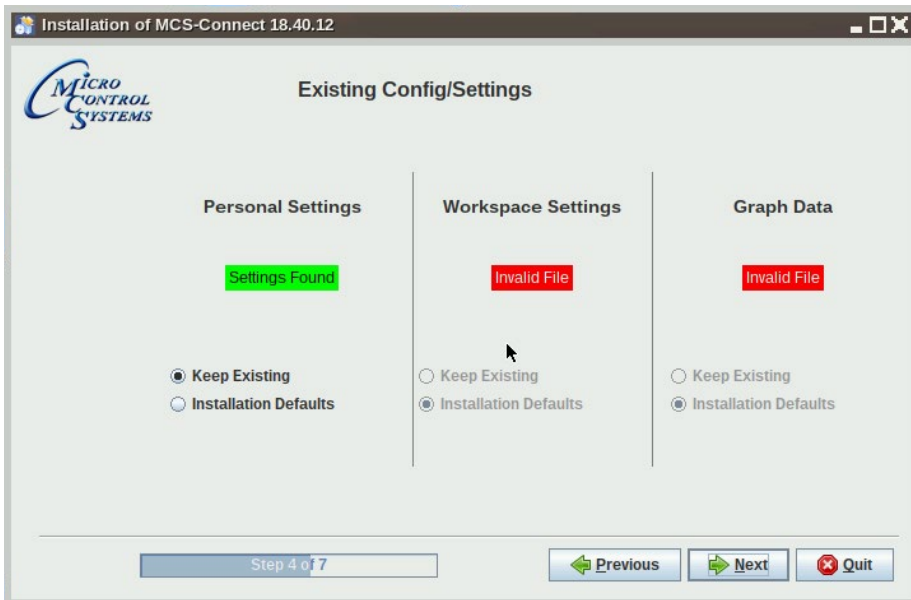
7. Select the installation path as shown.



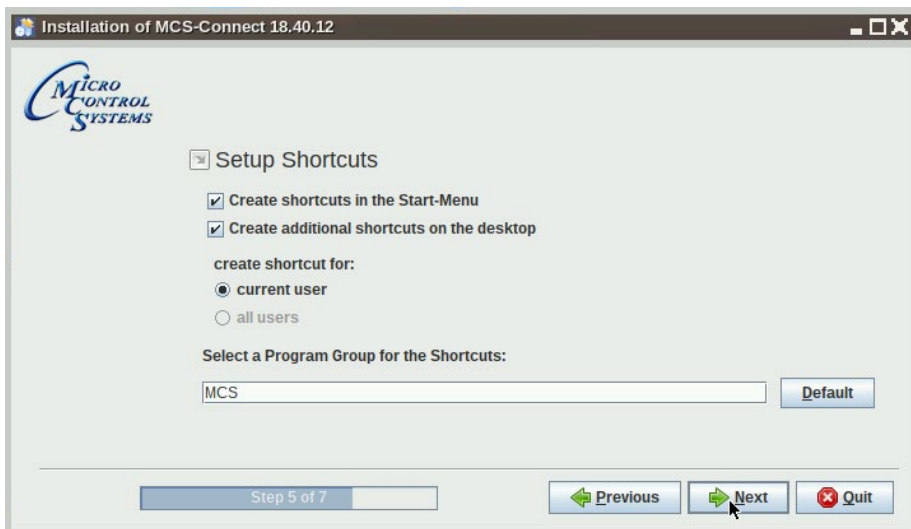
8. Next screen, click 'Yes' to update the current version on the touchscreen.



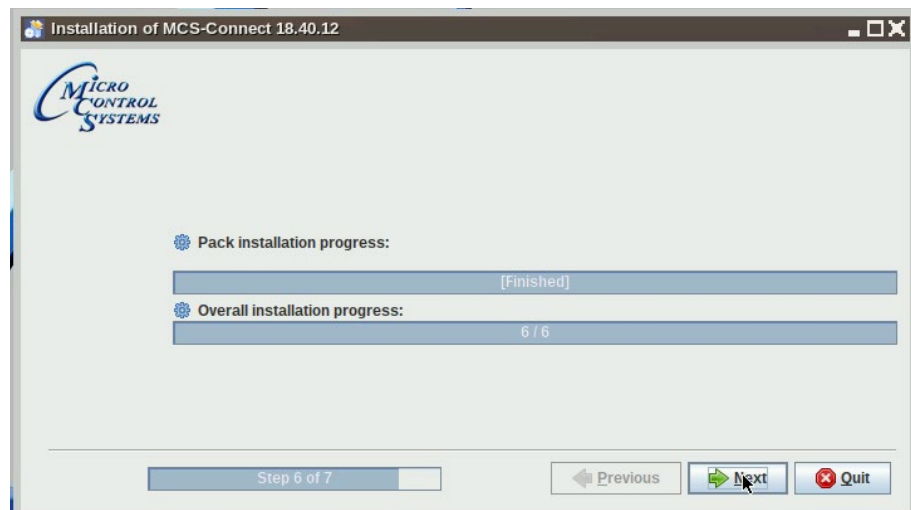
9. Click 'Next', to allow existing Config/Settings, click "Next".



10. Setup Shortcuts, click to check boxes for Start-Menu and shortcuts on the desktop, click next.

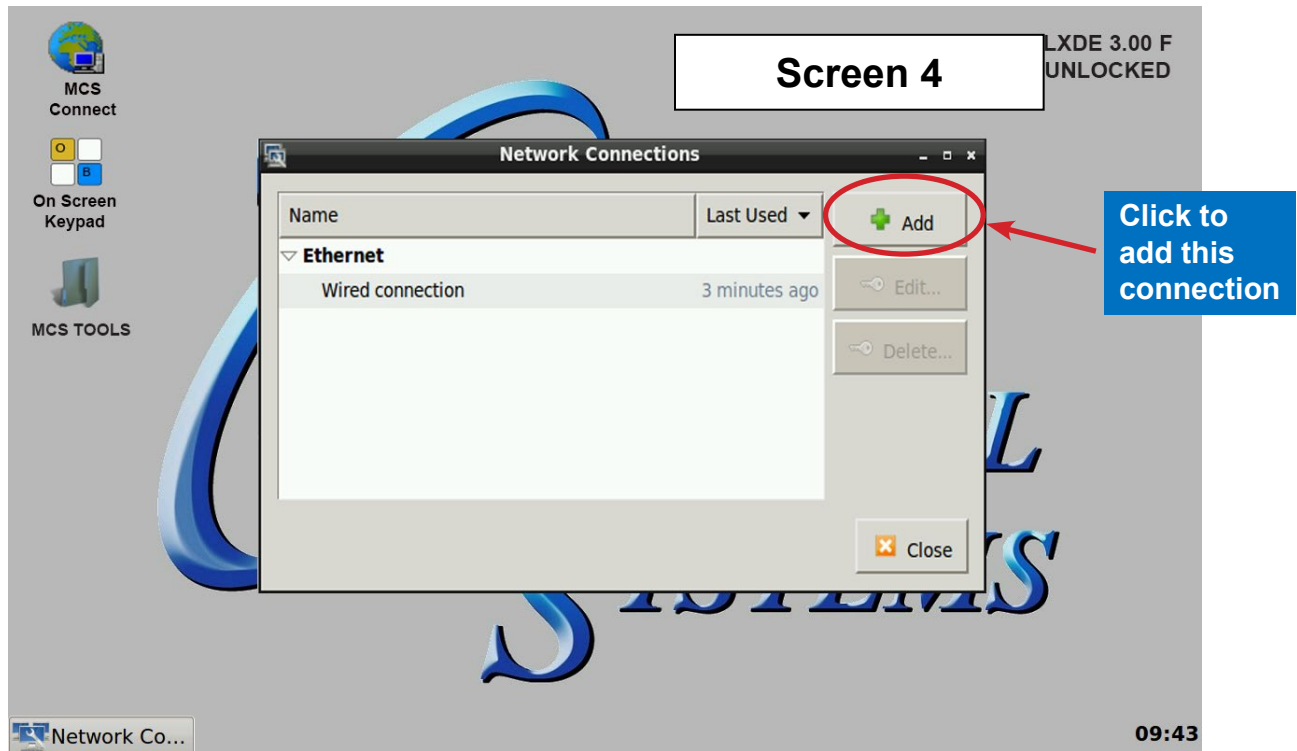


11. Next screen shows progress bar.

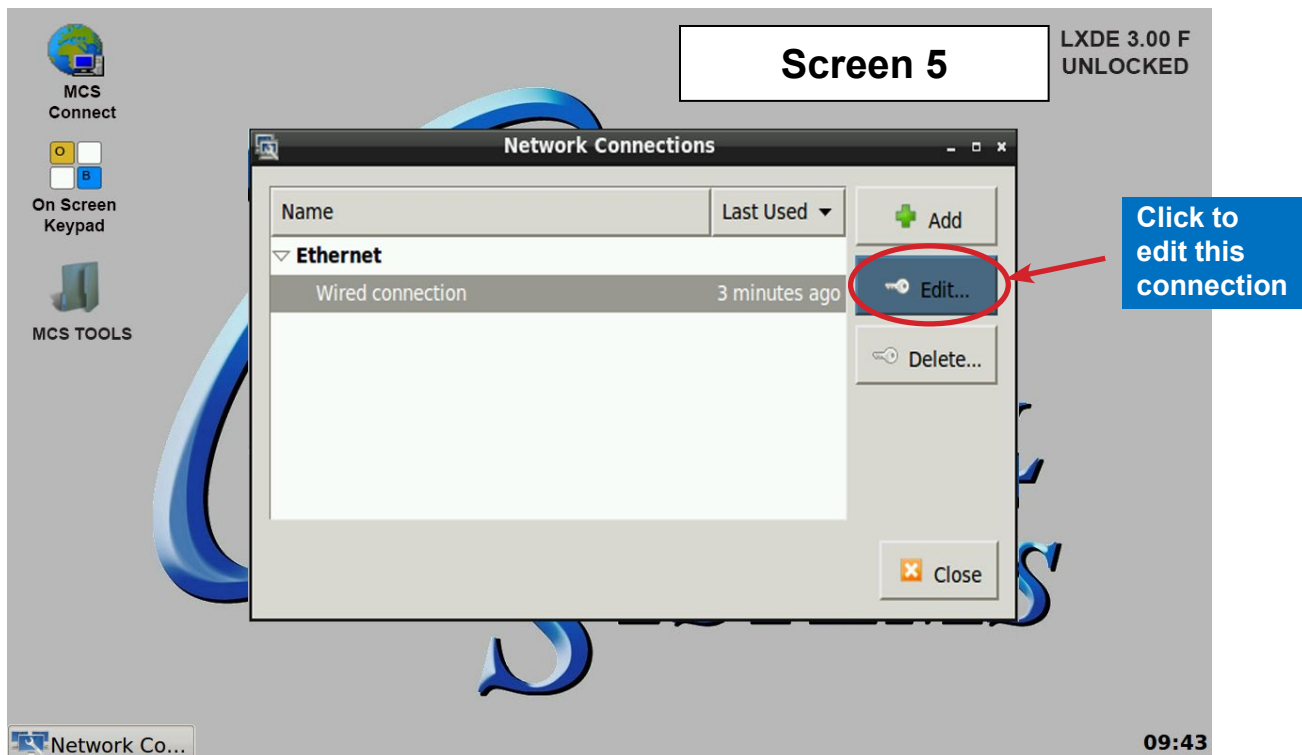


7.2.1 Network Connections Screen

Next display, screen 9-4 shows network communication screen. Your touchscreen will show **'Wired connection'**, click to add.



Screen 5, click to **'Edit'** this connection.



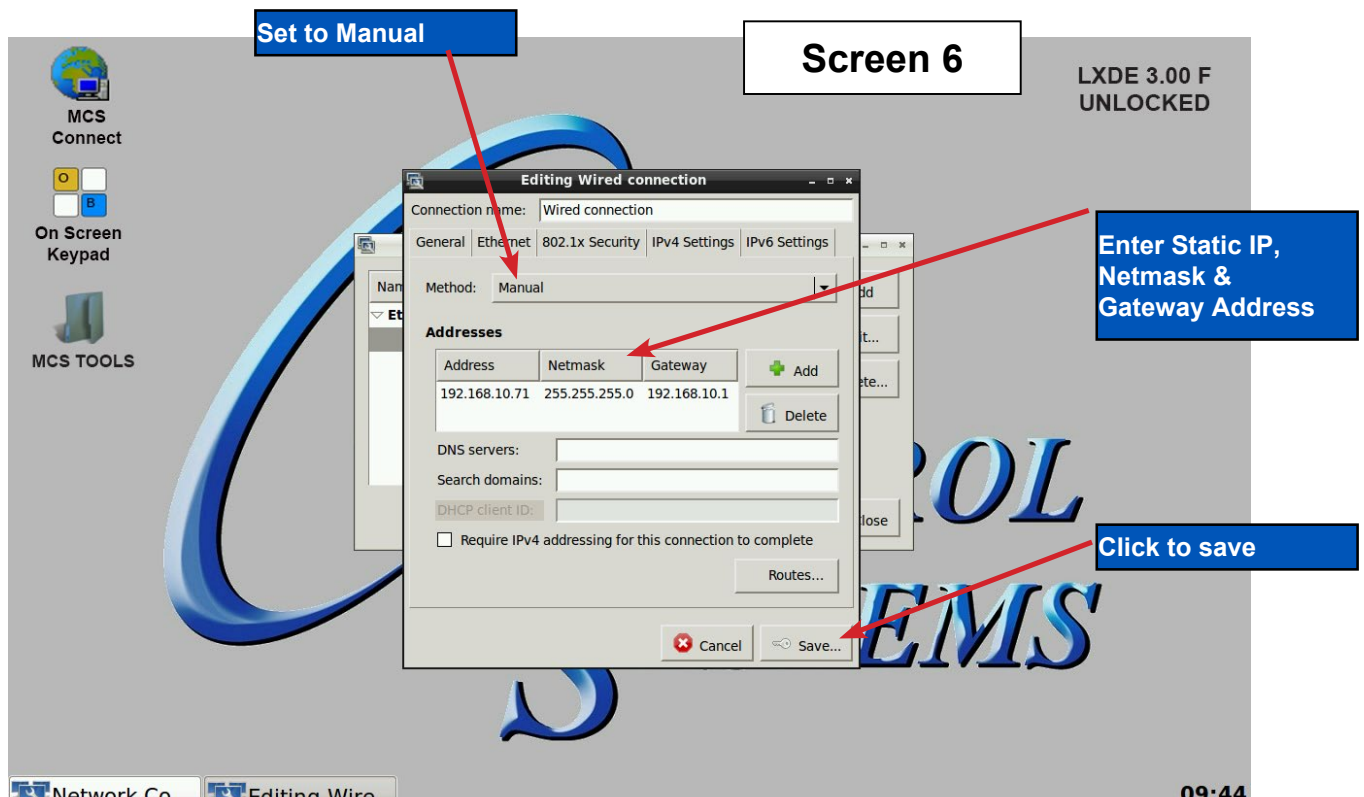
Selecting a Device MAC address

1. Go to the Ethernet tab.
2. Click the drop down arrow on the right side of "Device MAC address:"
3. Select the MAC address that has (eth*) at the end. (The number at the end varies).



7.2.2 Adding IP Address

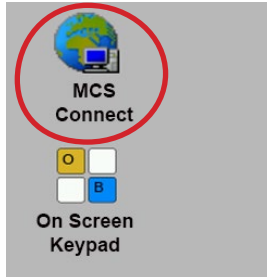
On screen 6, set 'Method' to 'Manual' click on 'IPV4' than click on 'Address', enter the IP address, the netmask and gateway addresses. Click to save to touchscreen memory.



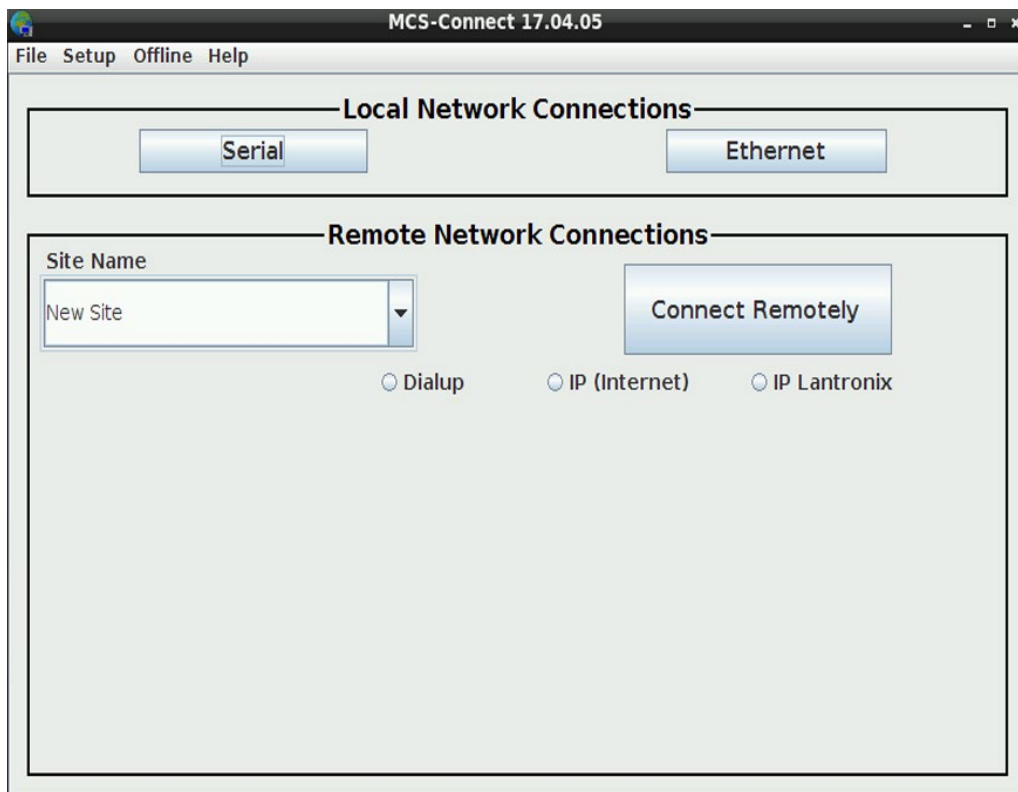
SECTION- 8. MCS-CONNECT

8.1. MCS-CONNECT Shortcut on Desktop

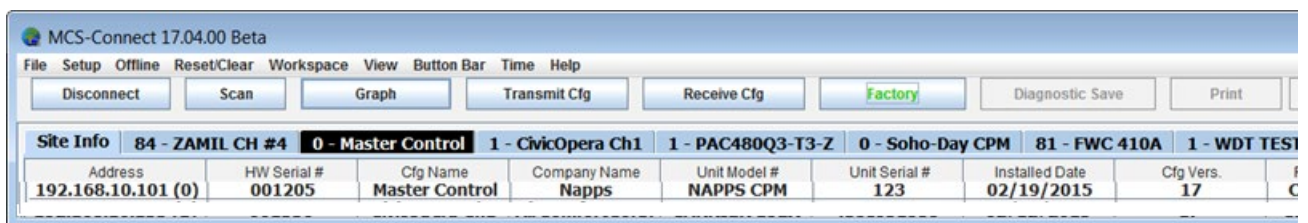
1. Click on the **MCS-Connect**.



2. This will launch the MCS-Connect main screen.
3. Click on Serial or Ethernet to scan for your controller.

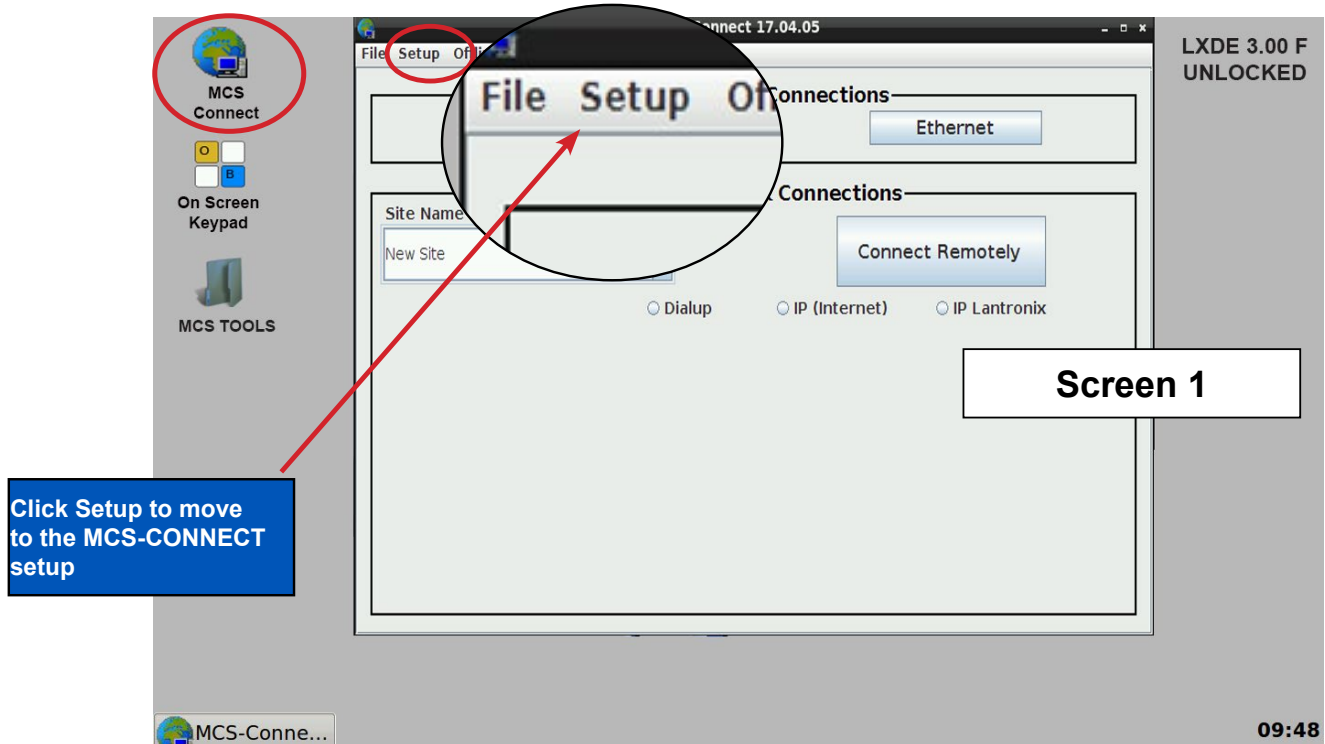


4. Screen below shows available controllers on your network.

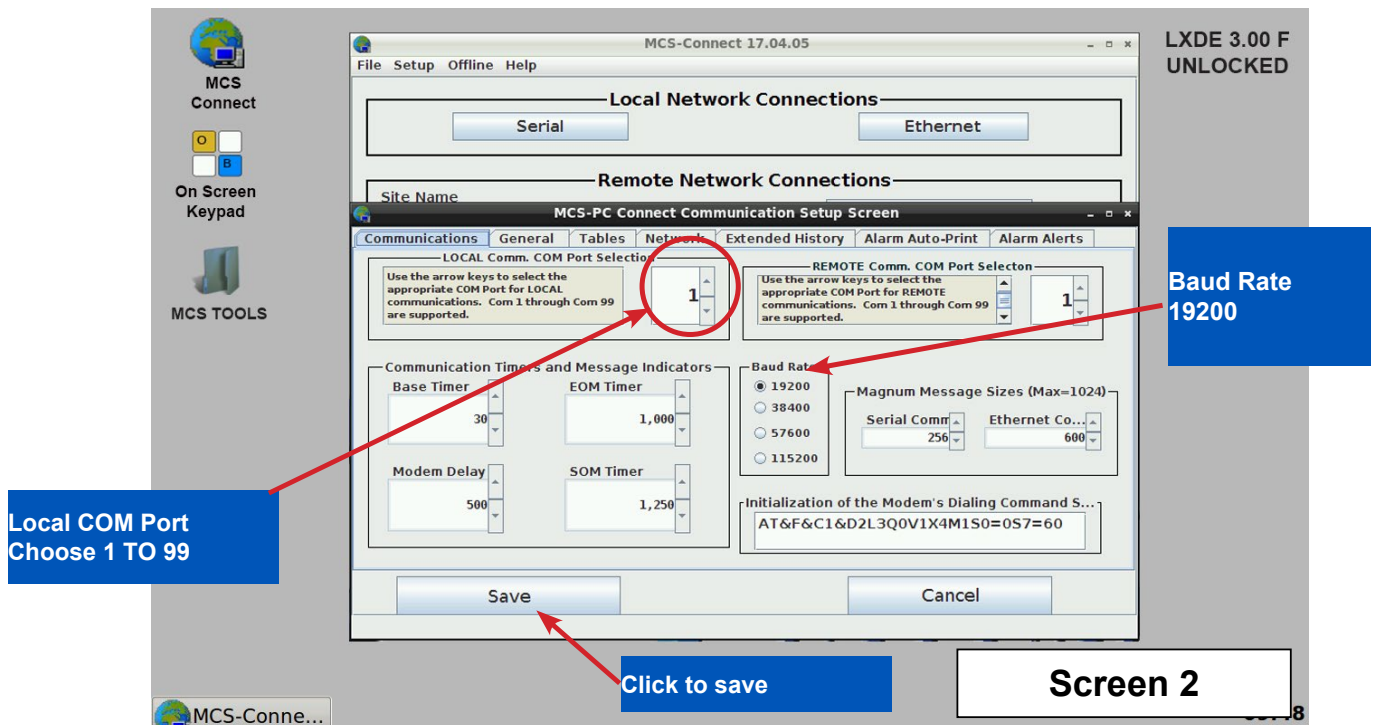


SECTION- 9. MCS-CONNECT COMMUNICATION

1. At the 'Desktop screen' click on the **'MCS-CONNECT shortcut'**.
2. Click on **'Setup'** at the MCS-CONNECT' screen.



3. Next screen is the setup screen for communicating with your controller or PC.
4. You can change the "Com port" and "Baud Rate" depending on how you are communicating with your controller or computer.



SECTION- 10. UPDATE MCS-CONNECT FOR RESISTIVE TOUCH

NOTE: MAKE SURE YOU DOWNLOAD THE LATEST LINUX VERSION OF MCS-CONNECT FROM OUR WEBSITE AT:

<http://www.mcscontrols.com/software.html>

Download Latest MCS-CONNECT software



Call or email MCS for the password to download the latest **MCS-CONNECT LINUX VERSION** software.

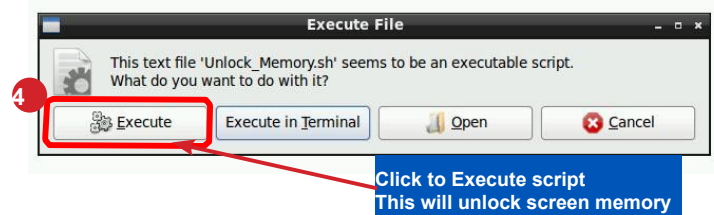
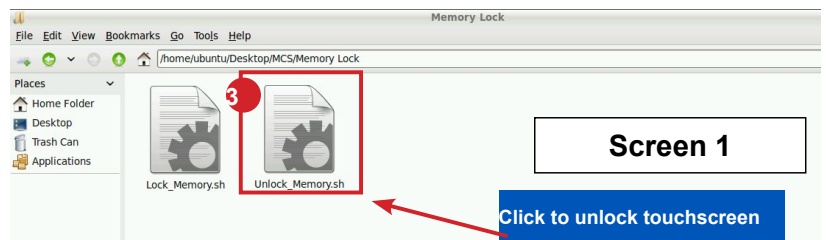
Download to your laptop or computer's desktop or a location where you will be able to copy to a USB drive.

Start by Unlocking the Touchscreen.

1. Click on the **'MCS TOOLS'** folder on the desktop, **'MEMORY LOCK'** sub folder will appear when this file is opened..

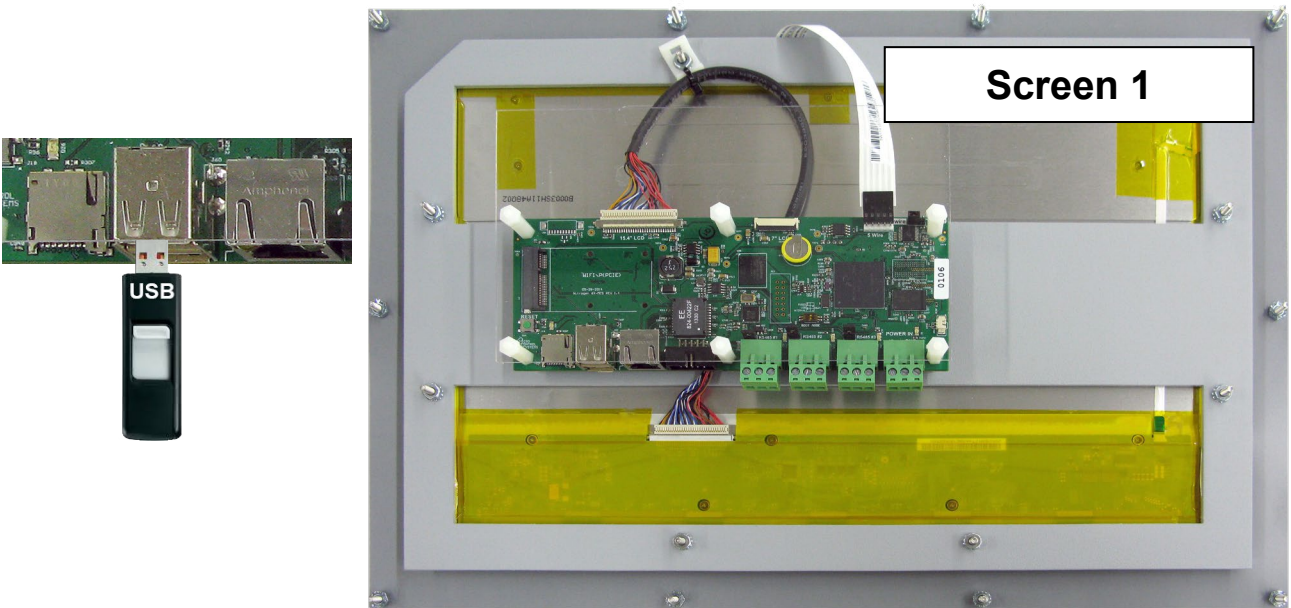


2. Double click on the **'Memory lock'** folder
3. Double click on the **'Unlock_Memory.sh'** icon
4. Next screen, click on **'Execute'**
5. Touchscreen will perform a restart



PLUG IN USB DRIVE AS SHOWN

On back of touchscreen, locate the USB PORT as shown on screen 2 and insert the USB drive with the new version of MCS-CONNECT.



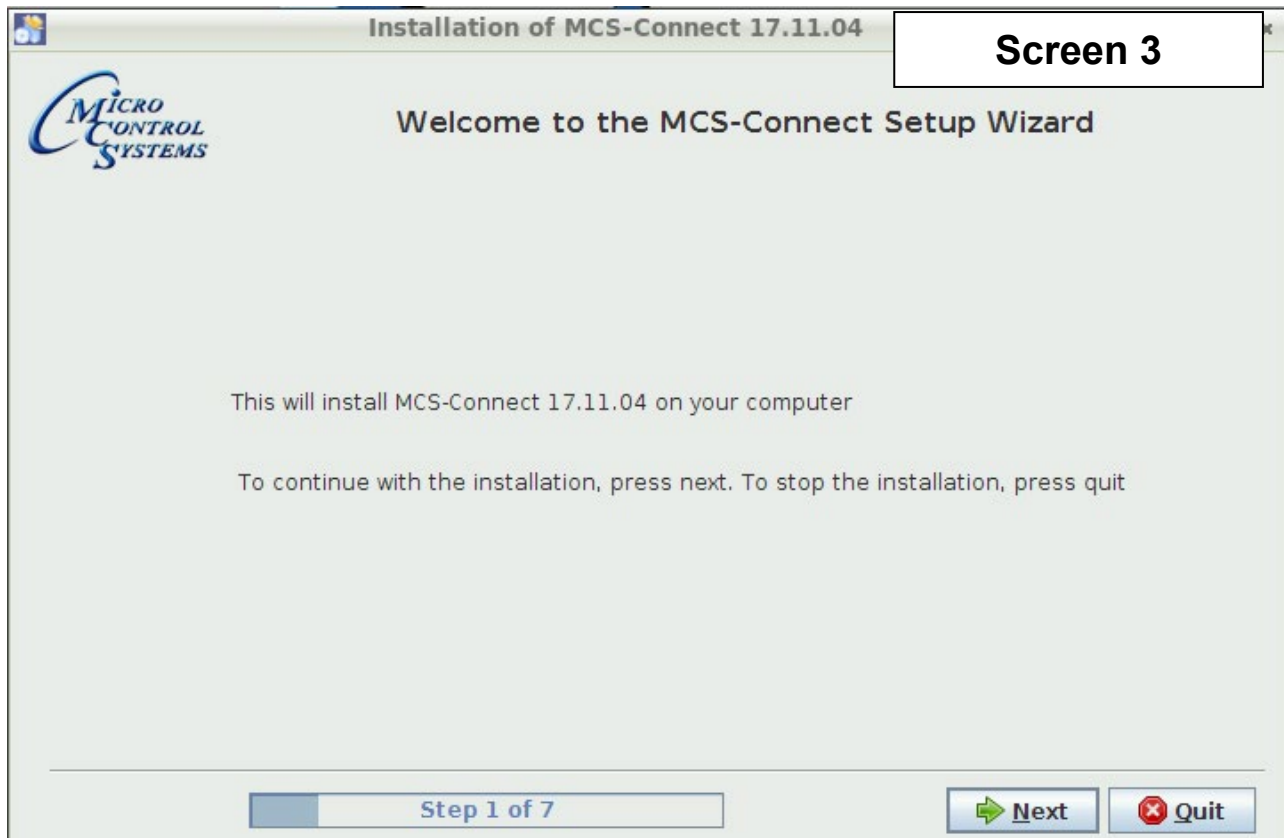
Copy the Updated File

1. After plugging in the USB drive, the following screen will appear, click ok to open in File Manager.
2. When the drive opens, **drag the 'MCS-CONNECT installation file' to the desktop.**

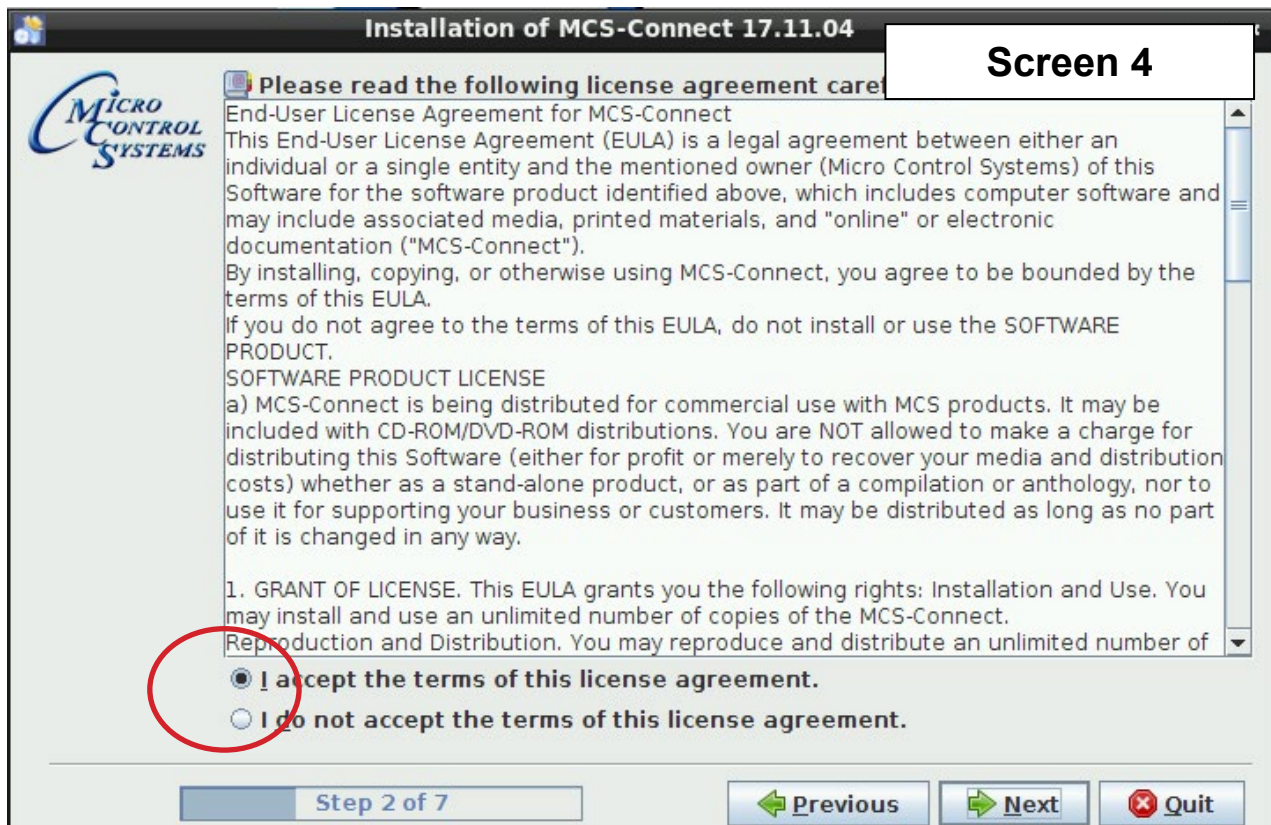


3. Close the screen so you can access the desktop.
4. Double click on the **'MCS-CONNECT installation file'** you just dragged to your desktop to upgrade.

5. Click next to continue installing the new 'MCS-CONNECT installation



6. Accept the terms for the 'license agreement', click next to continue.



Revision History

Date	Author	Description
03-30-16	DEW	Setup Application note
02-22-17	DEW	Additions remove setup file on desktop and trash
10-03-19	DEW	Edits from Bret