

**Micro Control Systems**  
APPLICATION NOTE  
APP-088

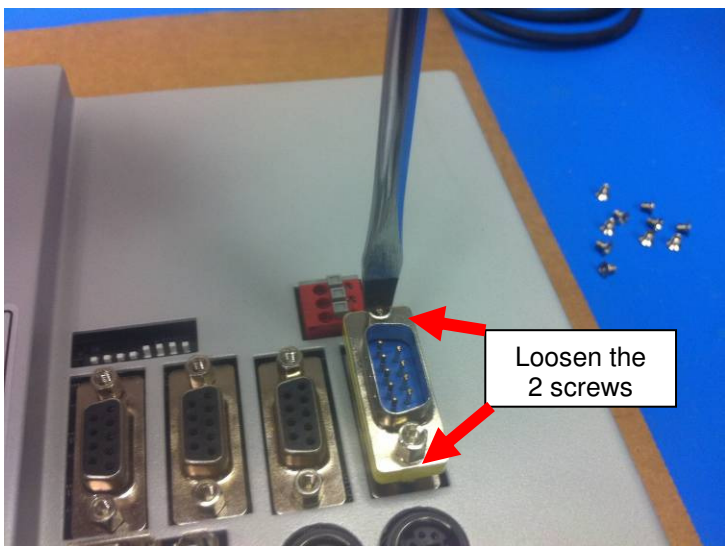
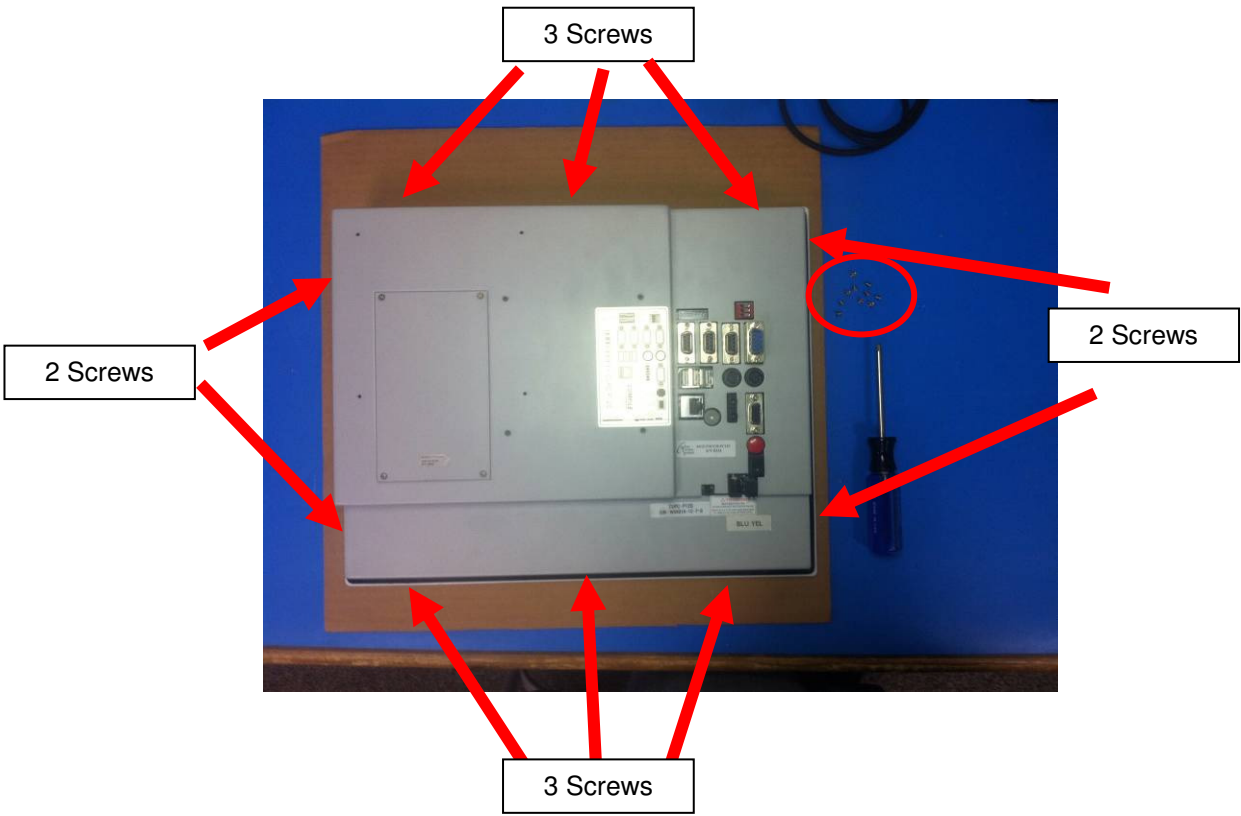
**MCS-Touch-PC15 Disassembly**

**Revision History**

Date	Author	Description
12/26/13	CLH	Create initial version

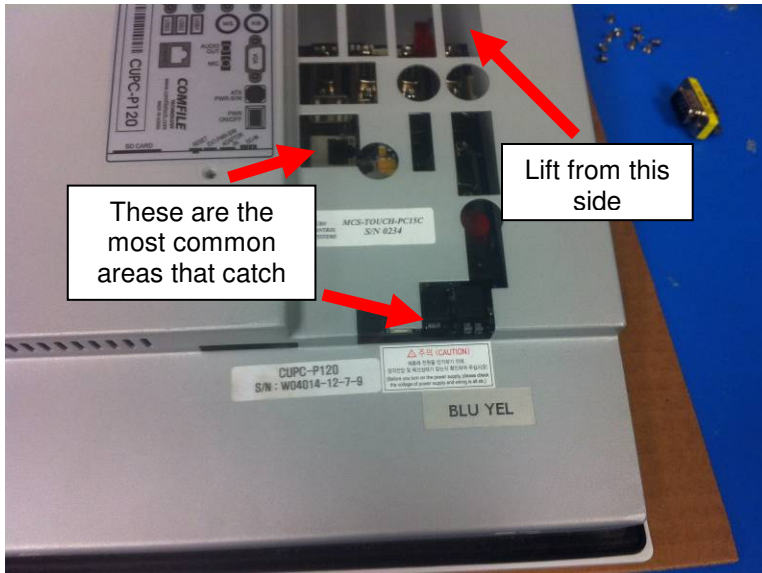
# 1. Place touchscreen on a flat surface.

Remove the 10 screws on the outside of the touchscreen with a Philips head screwdriver. Remove RS232 Gender Changer with a flathead screwdriver.



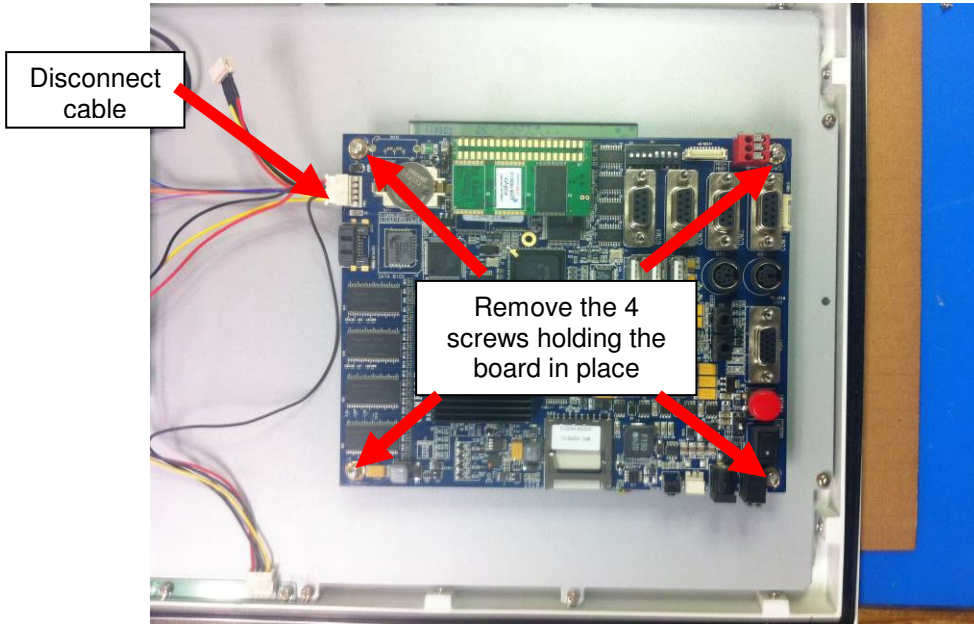
## Remove Back Cover from Touchscreen

Lift cover starting from the topside. Do not force it. If the cover is hard to remove, make sure that it's not catching onto the main board.

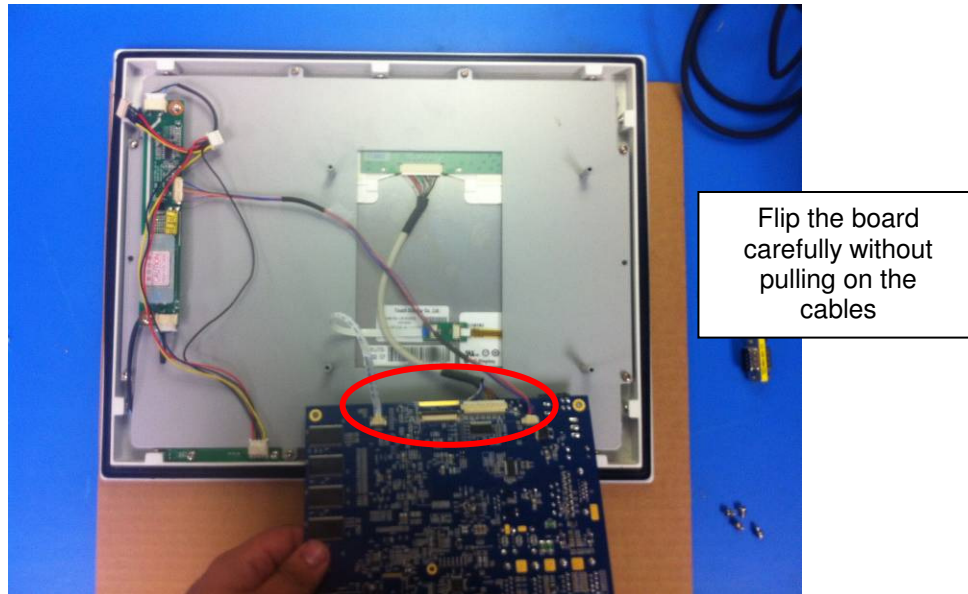


## Removing the main board

Remove the 4 screws holding the board in place using a Philips screwdriver. Disconnect cable on the left side of the board.

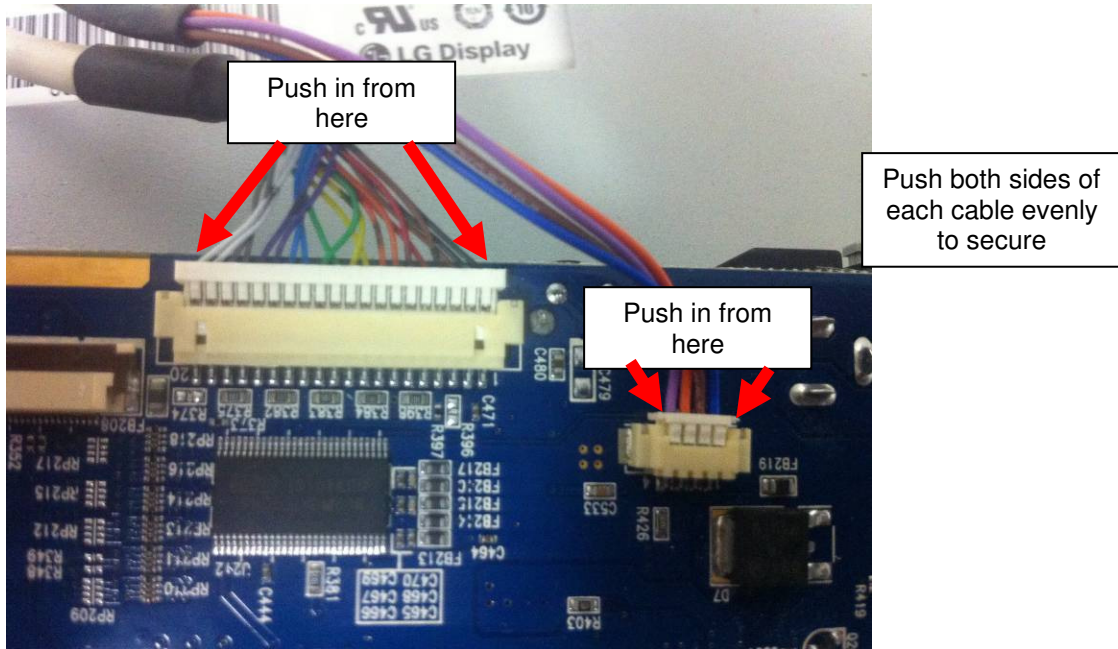


Grab the board from the top and carefully flip it. It is held on by 3 cables



## Checking the cables

Check the cables and see if they are secure



# Reassemble the Touchscreen

Follow steps 1-4 in Reverse order.

