

Micro Control Systems

APPLICATION NOTE

APP-062

Creating a Lontalk CFG file from a V8
MCS-Config CFG file and Downloading it
into a MCS-LONTALK-OEM

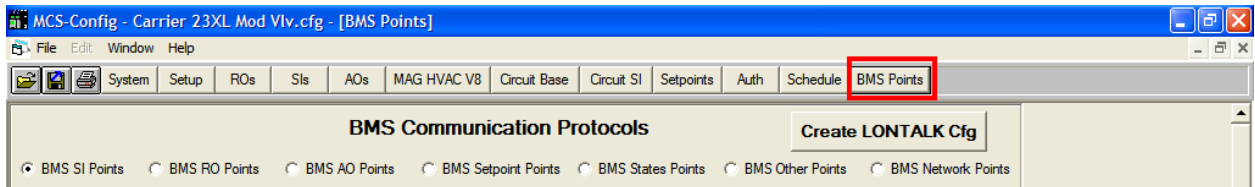
Revision History

Date	Author	Description
04/07/10	EAC	Created initial Application Note

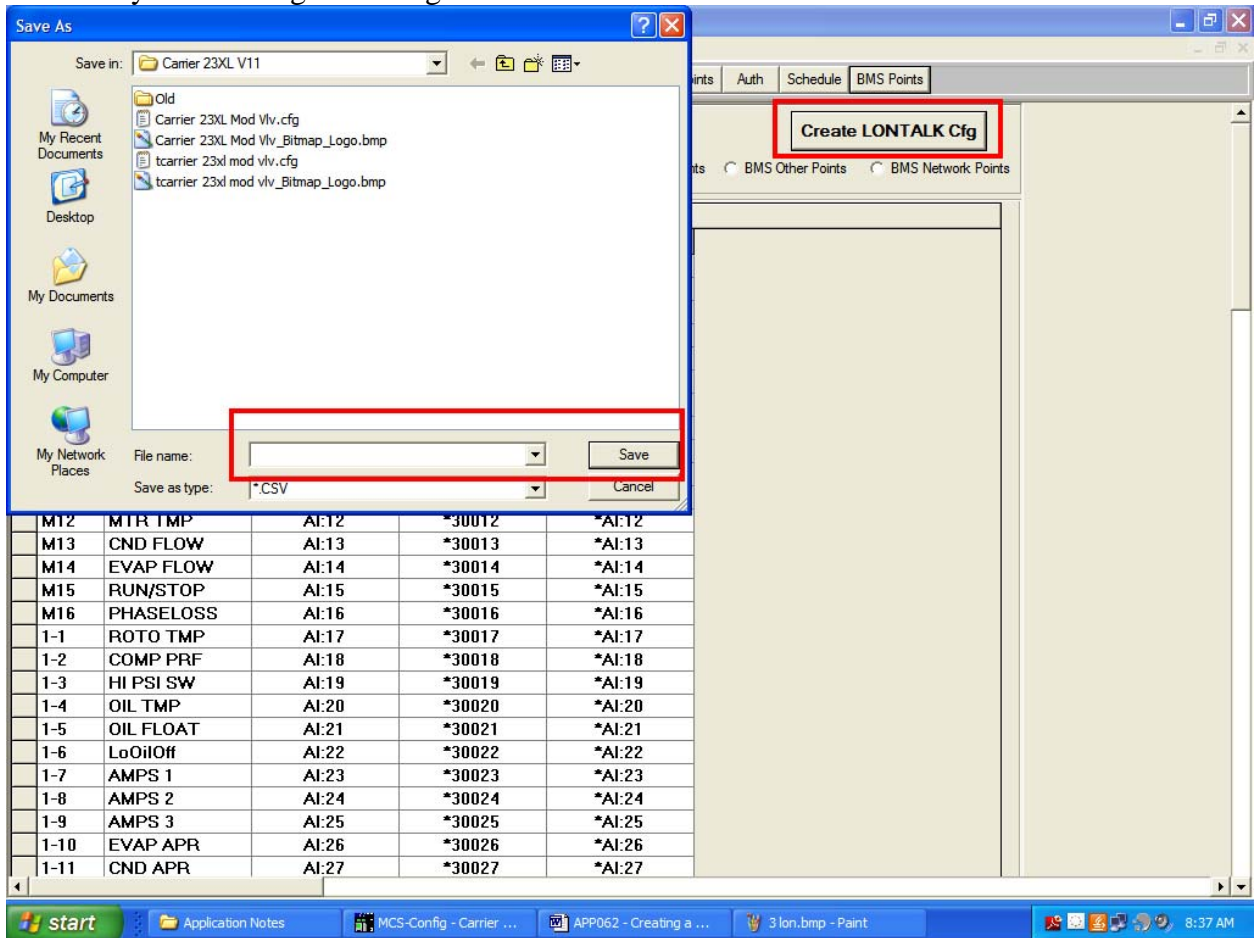
Theory

The following application note will explain how to create a lontalk cfg file from MCS-Config and download it into our MCS-LONTLAK-OEM using MCS Lontalk Tools.

1. First Open up your cfg file from MCS Config. On the top right hand side of the screen you will see BMS points select this box.

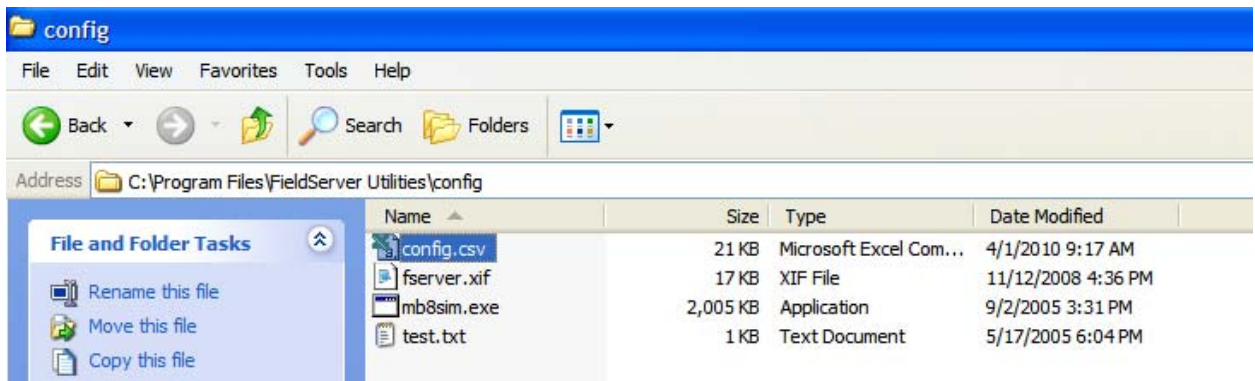
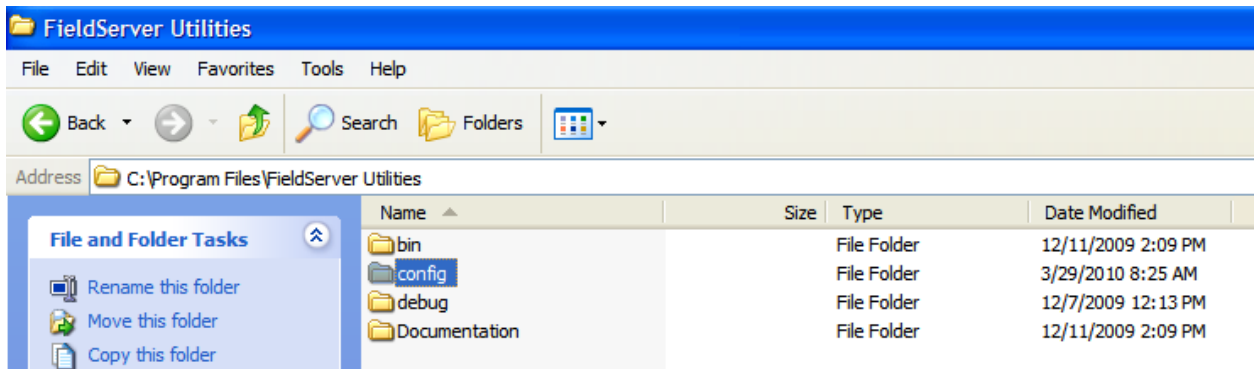
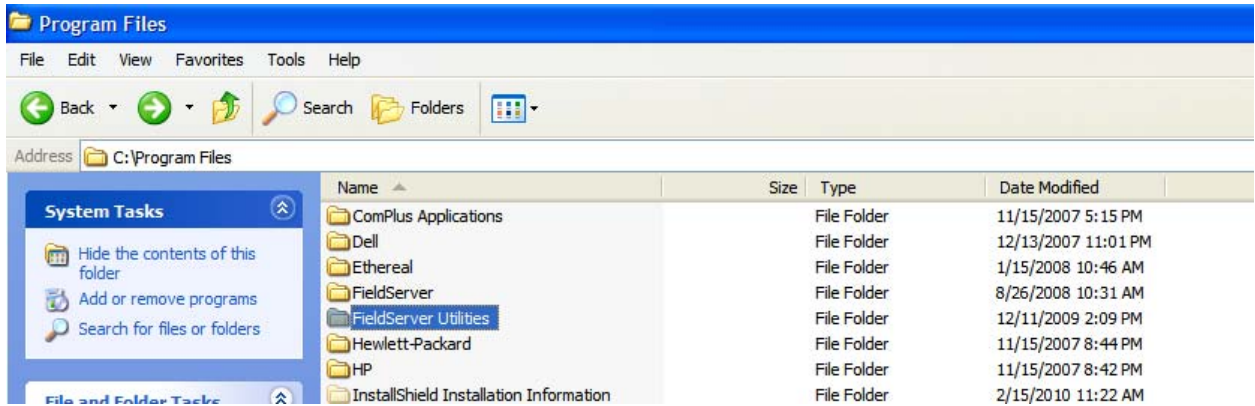


2. Then select the Create Lontalk CFG button. You will be prompted with a box to type in the name you want to give the cfg and select save.

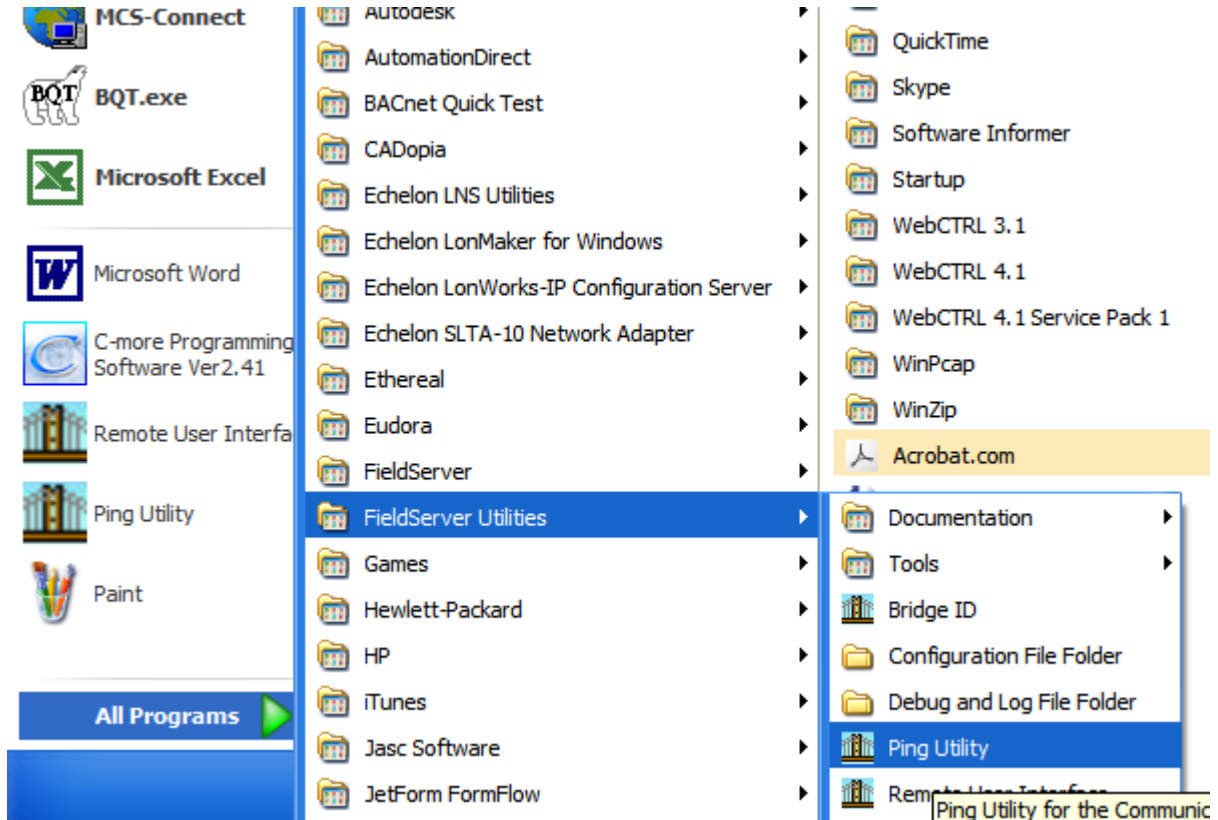


3. Now you must download and install the MCS Lontalk Tools. This can be found on our website in our software section <http://www.mcscontrols.com/Software/software.htm>.

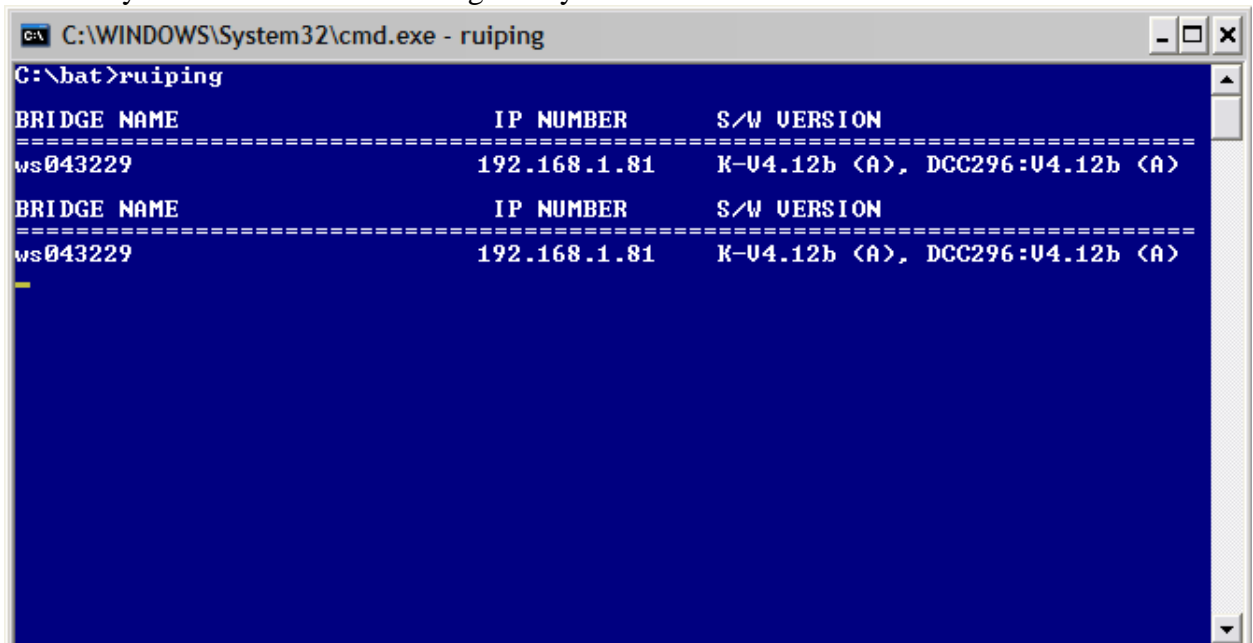
4. After you have installed the MCS Lontalk Tools you will want to place the cfg file you will be downloading into the MCS-LONTLAK-OEM, into the Field Server config folder. You will find this folder in your Program files folder and then FieldServer Utilities folder and in here you should see a folder named config. Copy your cfg file here.



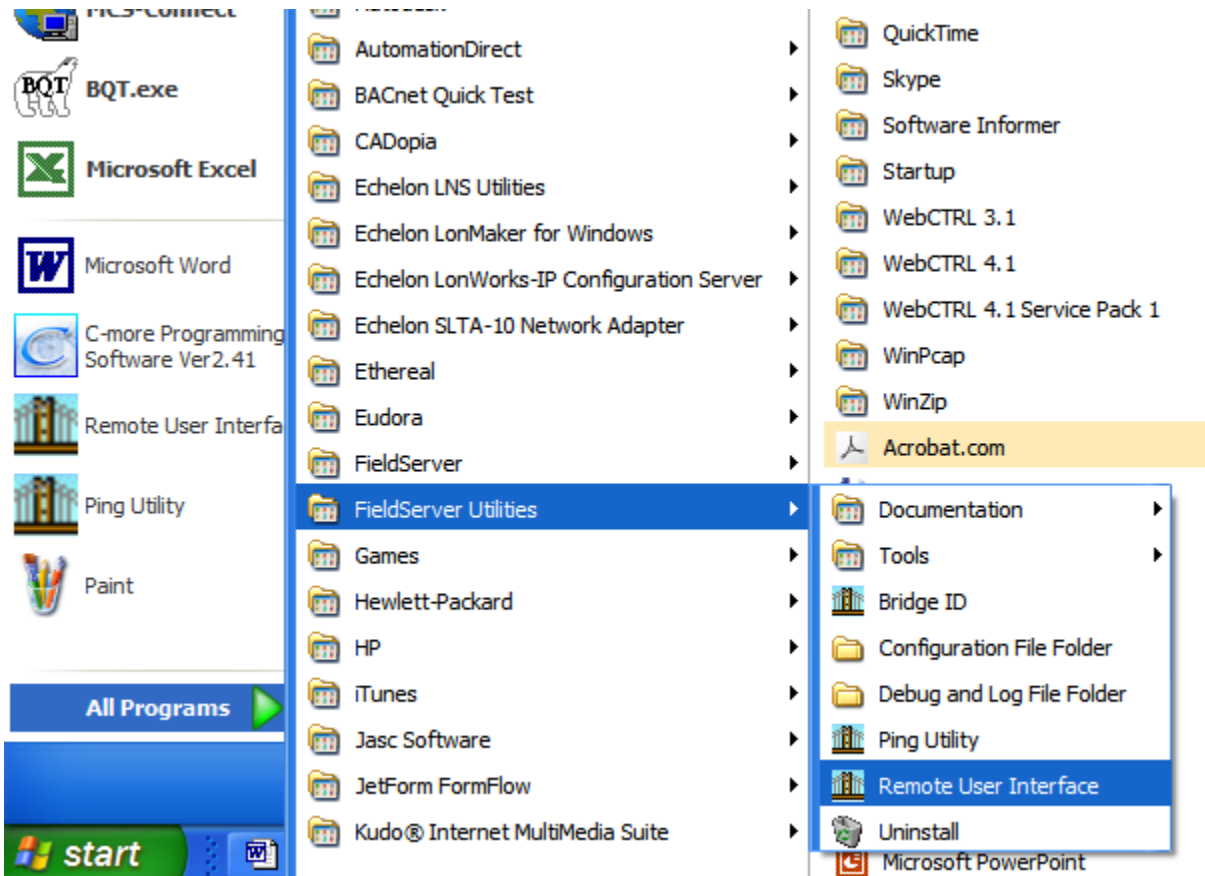
- Now you will need to turn on the MCS-Lontalk-OEM and be sure that it is connected to your laptop or network Via Ethernet cable. After you have made sure of the above you will need to run Ping Utility.



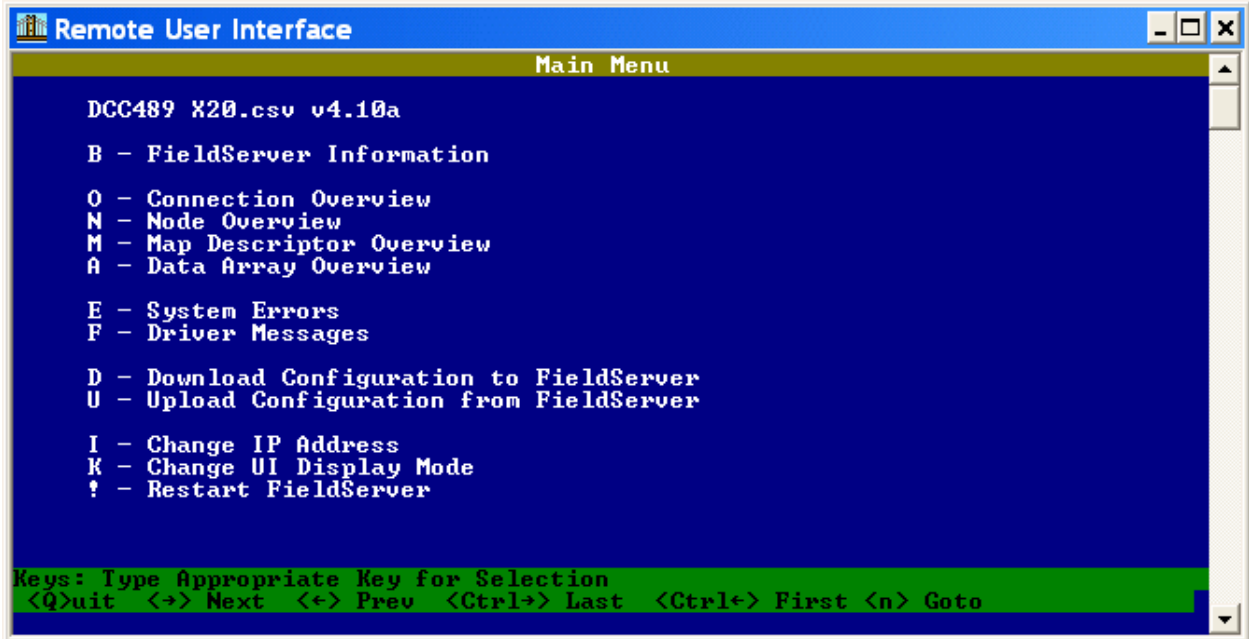
- Now you must wait until the Ping Utility finds the Lontalk card on the network.



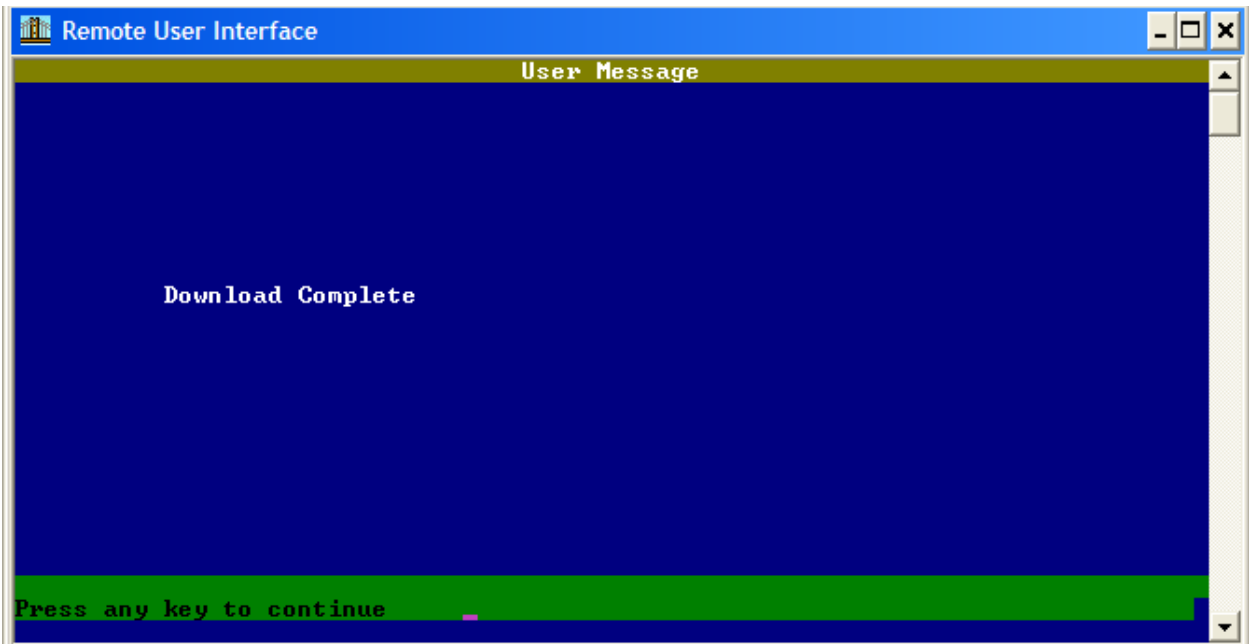
7. Once Ping Utility finds the Lontalk card you can exit Ping Utility and then run Remote User Interface.



8. Once you open Remote User Interface it should automatically take you to the Main Menu. Now you have to press D on your keyboard and you should be taken to the Download Configuration page and press D again and your CFG file will be downloaded into your Lontalk card.



9. When the download is complete press the esc key on your keyboard this should take you back to the Download Configuration page hit esc again and you should be taken back to the Main Menu.



10. Once you are back at the Main Menu press and hold the shift key and while holding the shift key press the number 1. You should see Fieldserver busy restarting on the Remote User Interface page. Now you must wait until Remote User Interface returns to the Main Menu this may take a couple of minutes. Once your back at the Main Menu your download is complete and you may exit Remote User Interface.

