

Micro Control Systems

APPLICATION NOTE
APP-035

Modifying Selected MCS Products For Use With Another Operating Voltage

Revision History

Date	Author	Description
10/03/02	Ron Andersen	Created Application Note
04/01/04	Ron Andersen	Updated

Table of Contents

Converting MCS-8 & I/O boards from 115vac to 230vac	3
Converting MCS-8 & I/O boards from 230vac to 115vac	5

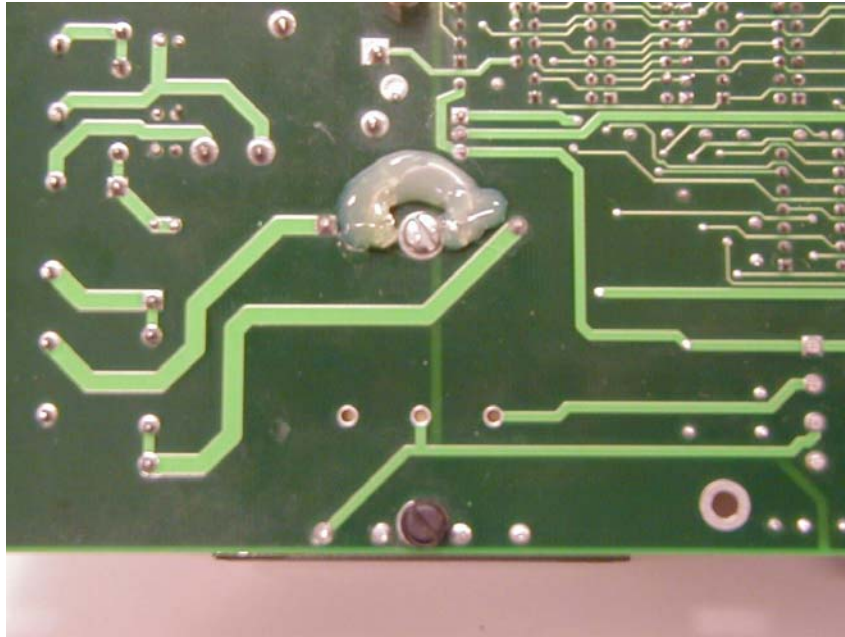
This Application Note outlines the procedures needed to convert MCS products that have board-mounted power transformers for use with another operating voltage.

Converting MCS-8 & I/O boards from 115vac to 230vac

1. Remove the hardware from the old power transformer that holds it against the board. Pay close attention to how the hardware was originally installed. Then desolder all six pins of the transformer and carefully remove it from the board.
2. Referring to the picture below, mount the new transformer (MCS Part Number 43-006) to the board. You will find a label on one side of the transformer which will read **DST-6-16**. Install the transformer so that this label faces left, towards the heatsink, and **NOT** towards the right edge of the board. Secure it in place using the hardware taken from the old transformer. Make sure that the black nylon hardware is used on the right side of the transformer and the metal hardware is used on the left side.



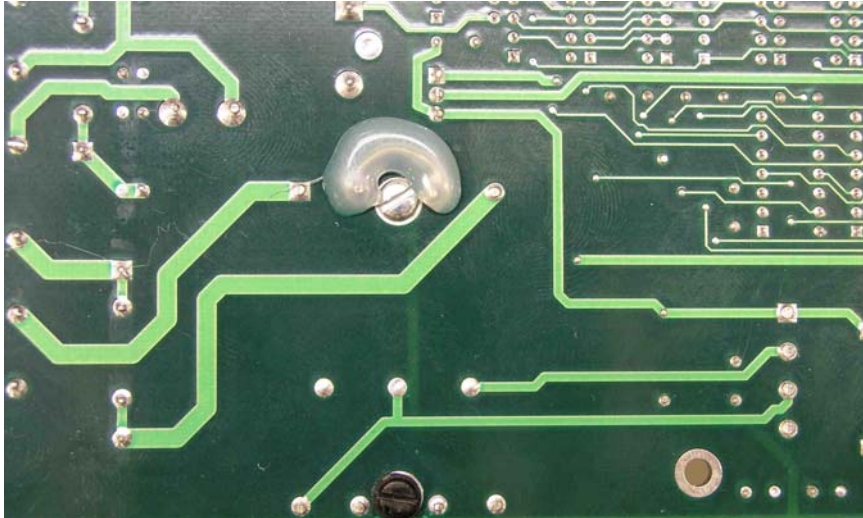
3. Referring to the picture below, turn the board over and connect a short bare solid wire between the two transformer pins on either side of the metal screw used to hold the transformer against the board. Then solder all eight pins of the transformer to the board. For added security you should encase the short bare solid wire with hot glue to prevent it from moving and touching the metal screw.



4. Remove the two round UL labels from the board. **BE VERY CAREFUL NOT TO DAMAGE THE TRACES UNDER THEM!**
5. Complete the job by placing 230vac labels at the three locations shown in the picture on page 3 to clearly identify that this board now uses 230vac input power.

Converting MCS-8 & I/O boards from 230vac to 115vac

1. Referring to the picture below, turn the board over and notice the jumper wire encased in hot glue. Remove the hot glue and the jumper.



2. Referring to the picture below, wire the board as shown using insulated hookup wire. When done, remove any 230vac labels on the board and on the transformer.

