



# RC2-830A Screw Compressor-R-134a

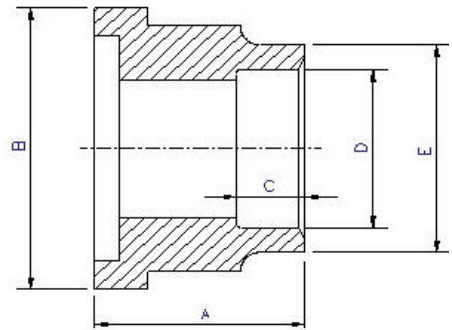
Specifications		Displacement	CFM	60 Hz	584
		Compressor	Rated Speed	Rpm	60 Hz
Volume Ratio	Vi			2.6 (standard other Vi available)	
Nominal Hp				183 Hp at 60 Hz	
Capacity Control	%			30%,50%,75% & 100% Step Capacity Control, 50%~100% Continuous Stepless Capacity Controls	
Lubrication				Differential Pressure Feed Lubricant	
Motor	Type				3 Phase, 2 Pole, Squirrel Cage, Induction Motor
	Insulation			Class F	
	Protection			3 PTC Protection 1 per winding	
Lubricant Charge	Gallons			7.4	
Oil Heater	Watts			300	
Hydrostatic Pressure test	lb/in <sup>2</sup> G			597	
Weight	Pounds			2535	

## Standard Compressors Accessories

- Modulating Slide Capacity
- Weather Proof Terminal Box for outdoor applications
- 115/1/60 Control Voltage
- 115/1/60 Crankcase heater
- Discharge Check Valve
- Discharge Service Valve (Discharge Stop Valve) with standard connection sizes and supplied with flanges and bushings
- Suction Service Valve (Suction Stop Valves) with standard connection sizes and supplied with flanges and bushings
- Oil Level Float Switch
- Suction Filter
- Oil Filter
- PSI Relief Valve
- Oil Sight Glass
- PT1000 for Reading Motor Temp
- INT69HBY supporting motor and discharge (PTC) temperature sensor protection as well as Phase Loss and Phase Reversal at Start Up Only

## Ports

- External Oil Cooler
- Liquid Injection (into screw chamber)
- Economizer
- Suction, Discharge & Oil Service



## Connections

Discharge Stop Valve	4"					
Discharge Check Valve	4"					
Suction Stop Valve	5"					
Economizer	1 1/8" solder					
Liquid Injection (chamber)	5/8" flare	A	B	C	D	E
Discharge Side	Copper Pipe Sizing 4 1/8"	2.99"	5.71"	1.97"	4.14"	4.56"
Suction Side	Copper Pipe Sizing 5 1/8"	2.95"	6.85"	1.38"	5.14"	5.77"

## MCC & LRA

### Optimized for R134a

Hertz	Volts	Maximum Continuous Current	Y-Δ	
			Locked Rotor Amps (Y)	Locked Rotor Amps (D)
60	460	531	545	1635