



## RC2-550A Screw Compressor-R134a

### Specifications

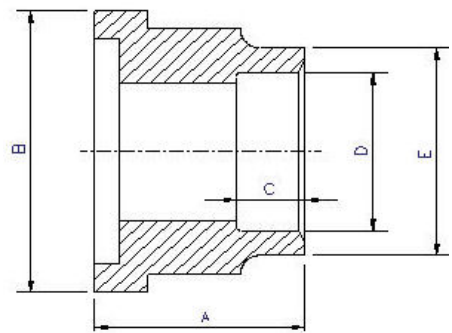
<b>Compressor</b>	Displacement	CFM	60 Hz	388	
	Rated Speed	Rpm	60 Hz	3550	
	Volume Ratio	Vi		2.6 (standard other Vi available)	
	Nominal Hp	126 Hp at 60 Hz			
	Capacity Control	%			25%,50%,75% & 100% Step Capacity Control, 50%~100% Continuous Stepless Capacity Controls
	Lubrication	Differential Pressure Feed Lubricant			
<b>Motor</b>	Type	3 Phase, 2 Pole, Squirrel Cage, Induction Motor			
	Insulation	Class F			
	Protection	3 PTC Protection 1 per winding			
<b>Lubricant Charge</b>	Gallons	6.1			
<b>Oil Heater</b>	Watts	300			
<b>Hydrostatic Pressure test</b>	lb/in <sup>2</sup> G	597			
<b>Weight</b>	Pounds	1808			

### Standard Compressors Accessories

- Modulating Slide Capacity
- Weather Proof Terminal Box for outdoor applications
- 115/1/60 Control Voltage
- 115/1/60 Crankcase heater
- Discharge Check Valve
- Discharge Service Valve (Discharge Stop Valve) with standard connection sizes and supplied with flanges and bushings
- Suction Service Valve (Suction Stop Valves) with standard connection sizes and supplied with flanges and bushings
- Oil Level Float Switch
- Suction Filter
- Oil Filter
- PSI Relief Valve
- Oil Sight Glass
- PT1000 for Reading Motor Temp
- INT69HBY supporting motor and discharge (PTC) temperature sensor protection as well as Phase Loss and Phase Reversal at Start Up Only

### Ports

- External Oil Cooler
- Liquid Injection (into screw chamber)
- Economizer
- Suction, Discharge & Oil Service



### Connections

<b>Discharge Stop Valve</b>	3"
<b>Discharge Check Valve</b>	3"
<b>Suction Stop Valve</b>	4"
<b>Economizer</b>	1 1/8" solder
<b>Liquid Injection (chamber)</b>	5/8" flare
<b>Discharge Side</b>	Copper Pipe Sizing 3 1/8"
<b>Suction Side</b>	Copper Pipe Sizing 4 1/8"

	A	B	C	D	E
Discharge Side	2.59"	4.72"	1.77"	3.14"	3.54"
Suction Side	2.99"	5.71"	1.97"	4.14"	4.56"

### MCC & LRA

Optimized for R134a

Hertz	Volts	Maximum Continuous Current	Y-Δ		Part Wind Start	
			Locked Rotor Amps (Y)	Locked Rotor Amps (D)	Locked Rotor Amps (D)	Locked Rotor Amps (DD)
60	460	289	305	915	646	950