



## RC2-510B Screw Compressor

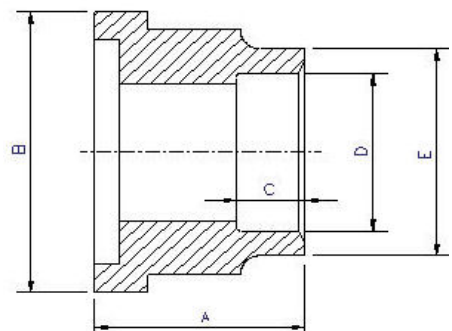
Specifications		Displacement	CFM	60 Hz	360
Compressor	Rated Speed	Rpm	60 Hz	3550	
	Volume Ratio	Vi		2.6 (standard other Vi available)	
	Nominal Hp			117 Hp at 60 Hz	
	Capacity Control	%		35%,50%,75% & 100% Step Capacity Control, 50%~100% Continuous Stepless Capacity Controls	
	Lubrication			Differential Pressure Feed Lubricant	
	Motor	Type			3 Phase, 2 Pole, Squirrel Cage, Induction Motor
Insulation				Class F	
Protection				3 PTC Protection 1 per winding	
Lubricant Charge	Gallons			5.3	
Oil Heater	Watts			300	
Hydrostatic Pressure test	lb/in <sup>2</sup> G			597	
Weight	Pounds			1720	

### Standard Compressors Accessories

- Modulating Slide Capacity
- Weather Proof Terminal Box for outdoor applications
- 115/1/60 Control Voltage
- 115/1/60 Crankcase heater
- Discharge Check Valve
- Discharge Service Valve (Discharge Stop Valve) with standard connection sizes and supplied with flanges and bushings
- Suction Service Valve (Suction Stop Valves) with standard connection sizes and supplied with flanges and bushings
- Oil Level Float Switch
- Suction Filter
- Oil Filter
- PSI Relief Valve
- Oil Sight Glass
- PT1000 for Reading Motor Temp
- INT69HBY supporting motor and discharge (PTC) temperature sensor protection as well as Phase Loss and Phase Reversal at Start Up Only

### Ports

- External Oil Cooler
- Liquid Injection (into screw chamber)
- Economizer
- Suction, Discharge & Oil Service



Connections		A	B	C	D	E
Discharge Stop Valve	3"					
Discharge Check Valve	3"					
Suction Stop Valve	4"					
Economizer	7/8" solder					
Liquid Injection (chamber)	5/8" flare					
Discharge Side	Copper Pipe Sizing 3 1/8"	2.59"	4.72"	1.77"	3.14"	3.54"
Suction Side	Copper Pipe Sizing 4 1/8"	2.99"	5.71"	1.97"	4.14"	4.56"

### MCC & LRA

R22, R407C, R404A, R507A, R134a

Hertz	Volts	Maximum Continuous Current	Y-Δ		Part Wind Start	
			Locked Rotor Amps (Y)	Locked Rotor Amps (D)	Locked Rotor Amps (D)	Locked Rotor Amps (DD)
60	460	335	463	1390	996	1465