



RC2-410B Screw Compressor

Specifications

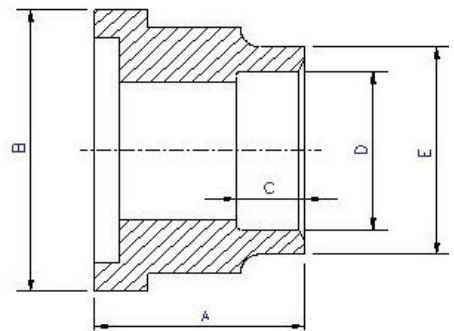
Compressor	Displacement	CFM	60 Hz	288	
	Rated Speed	Rpm	60 Hz	3550	
	Volume Ratio	Vi		2.6 (standard other Vi available)	
	Nominal Hp	146 Hp at 60 Hz			
	Capacity Control	%			25%,50%,75% & 100% Step Capacity Control, 50%~100% Continuous Stepless Capacity Controls
	Lubrication	Differential Pressure Feed Lubricant			
Motor	Type	3 Phase, 2 Pole, Squirrel Cage, Induction Motor			
	Insulation	Class F			
	Protection	3 PTC Protection 1 per winding			
Lubricant Charge	Gallons	4.0			
Oil Heater	Watts	300			
Hydrostatic Pressure test	lb/in ² G	597			
Weight	Pounds	1631			

Standard Compressors Accessories

- Modulating Slide Capacity
- Weather Proof Terminal Box for outdoor applications
- 115/1/60 Control Voltage
- 115/1/60 Crankcase heater
- Discharge Check Valve
- Discharge Service Valve (Discharge Stop Valve) with standard connection sizes and supplied with flanges and bushings
- Suction Service Valve (Suction Stop Valves) with standard connection sizes and supplied with flanges and bushings
- Oil Level Float Switch
- Suction Filter
- Oil Filter
- PSI Relief Valve
- Oil Sight Glass
- PT1000 for Reading Motor Temp
- INT69HBY supporting motor and discharge (PTC) temperature sensor protection as well as Phase Loss and Phase Reversal at Start Up Only

Ports

- External Oil Cooler
- Liquid Injection (into screw chamber)
- Economizer
- Suction, Discharge & Oil Service



Connections

Discharge Stop Valve	2 1/2"
Discharge Check Valve	2 1/2"
Suction Stop Valve	4"
Economizer	7/8" solder
Liquid Injection (chamber)	5/8" flare
Discharge Side	Copper Pipe Sizing 2 5/8"
Suction Side	Copper Pipe Sizing 4 1/8"
	A B C D E
	2.36" 4.33" 1.38" 2.63" 3.03"
	2.99" 5.71" 1.97" 4.14" 4.57"

MCC & LRA

R22, R407C, R404A, R507A, R134a

Hertz	Volts	Maximum Continuous Current	Y-Δ		Part Wind Start	
			Locked Rotor Amps (Y)	Locked Rotor Amps (D)	Locked Rotor Amps (D)	Locked Rotor Amps (DD)
60	460	267	305	915	646	950