



RC2-340BF Screw Compressor

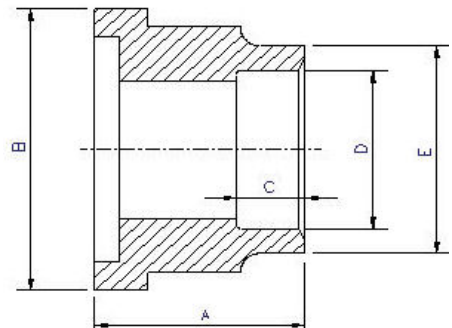
Specifications		Displacement	CFM	60 Hz	240
Compressor	Rated Speed	Rpm	60 Hz	3550	
	Volume Ratio	Vi	2.6 (standard other Vi available)		
	Nominal Hp	121 Hp at 60 Hz			
	Capacity Control	%	35%,50%,75% & 100% Step Capacity Control, 50%~100% Continuous Stepless Capacity Controls		
	Lubrication	Differential Pressure Feed Lubricant			
	Motor	Type	3 Phase, 2 Pole, Squirrel Cage, Induction Motor		
Insulation		Class F			
Protection		3 PTC Protection 1 per winding			
Lubricant Charge	No internal oil separator or sump				
Hydrostatic Pressure test	lb/in ² G	597			
Weight	Pounds	1367			

Standard Compressors Accessories

- Modulating Slide Capacity
- Weather Proof Terminal Box for outdoor applications
- 115/1/60 Control Voltage
- Discharge Check Valve
- Discharge Service Valve (Discharge Stop Valve) with standard connection sizes and supplied with flanges and bushings
- Suction Service Valve (Suction Stop Valves) with standard connection sizes and supplied with flanges and bushings
- Suction Filter
- PSI Relief Valve
- Oil Sight Glass
- PT1000 for Reading Motor Temp
- INT69HBY supporting motor and discharge (PTC) temperature sensor protection as well as Phase Loss and Phase Reversal at Start Up Only

Ports

- External Oil Cooler
- Liquid Injection (into screw chamber)
- Economizer



Connections	Discharge Stop Valve	2 1/2"					
	Discharge Check Valve	2 1/2"					
	Suction Stop Valve	4"					
	Economizer	7/8" solder					
	Liquid Injection (chamber)	5/8" flare	A	B	C	D	E
	Discharge Side	Copper Pipe Sizing 2 5/8"	2.36"	4.33"	1.38"	2.63"	3.03"
	Suction Side	Copper Pipe Sizing 4 1/8"	2.99"	5.71"	1.97"	4.14"	4.57"

MCC & LRA

R22, R407C, R404A, R507A, R134a

Hertz	Volts	Maximum Continuous Current	Y-Δ		Part Wind Start	
			Locked Rotor Amps (Y)	Locked Rotor Amps (D)	Locked Rotor Amps (D)	Locked Rotor Amps (DD)
60	220	457	662	1985	1342	2065
60	460	218	360	1080	640	985