



## RC2-230B Screw Compressor

### Specifications

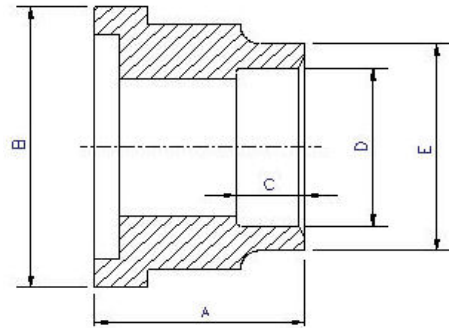
|                                  |                      |   |       |                                   |  |
|----------------------------------|----------------------|---|-------|-----------------------------------|--|
| <b>Compressor</b>                | Displacement         | CFM   | 60 Hz | 163                               |  |
|                                  | Rated Speed          | Rpm   | 60 Hz | 3550                              |  |
|                                  | Volume Ratio         | Vi  |       | 2.6 (standard other Vi available) |  |
|                                  | Nominal Hp           | 81 at 60Hz                                      |       |                                   |  |
|                                  | Capacity Control     | %   |       |                                   | 35%,50%,75% & 100% Step Capacity Control, 50%~100% Continuous Stepless Capacity Controls |
|                                  | Lubrication          | Differential Pressure Feed Lubricant            |       |                                   |  |
| <b>Motor</b>                     | Type                 | 3 Phase, 2 Pole, Squirrel Cage, Induction Motor |       |                                   |  |
|                                  | Insulation           | Class F   |       |                                   |  |
|                                  | Protection           | 3 PTC Protection 1 per winding                  |       |                                   |  |
| <b>Lubricant Charge</b>          | Gallons              | 3.7   |       |                                   |  |
| <b>Oil Heater</b>                | Watts                | 150   |       |                                   |  |
| <b>Hydrostatic Pressure test</b> | lb/in <sup>2</sup> G | 597   |       |                                   |  |
| <b>Weight</b>                    | Pounds               | 1224  |       |                                   |  |

### Standard Compressors Accessories

- Modulating Slide Capacity
- Weather Proof Terminal Box for outdoor applications
- 115/1/60 Control Voltage
- 115/1/60 Crankcase heater
- Discharge Check Valve
- Discharge Service Valve (Discharge Stop Valve) with standard connection sizes and supplied with flanges and bushings
- Suction Service Valve (Suction Stop Valves) with standard connection sizes and supplied with flanges and bushings
- Oil Level Float Switch
- Suction Filter
- Oil Filter
- PSI Relief Valve
- Oil Sight Glass
- PT1000 for Reading Motor Temp
- INT69HBY supporting motor and discharge (PTC) temperature sensor protection as well as Phase Loss and Phase Reversal at Start Up Only

### Ports

- External Oil Cooler
- Liquid Injection (into screw chamber)
- Economizer
- Suction, Discharge & Oil Service



### Connections

|                                   |                           |       |       |       |       |       |
|-----------------------------------|---------------------------|-------|-------|-------|-------|-------|
| <b>Discharge Stop Valve</b>       | 2"                        |       |       |       |       |       |
| <b>Discharge Check Valve</b>      | 2"                        |       |       |       |       |       |
| <b>Suction Stop Valve</b>         | 3"                        |       |       |       |       |       |
| <b>Economizer</b>                 | 5/8" solder               |       |       |       |       |       |
| <b>Liquid Injection (chamber)</b> | 5/8" flare                | A     | B     | C     | D     | E     |
| <b>Discharge Side</b>             | Copper Pipe Sizing 2 1/8" | 1.97" | 3.54" | 1.18" | 2.14" | 2.56" |
| <b>Suction Side</b>               | Copper Pipe Sizing 3 1/8" | 2.60" | 4.72" | 1.77" | 3.14" | 3.54" |

### MCC & LRA

R22, R407C, R404A, R507A, R134a

| Hertz | Volts | Maximum Continuous Current | Y-Δ                   |                       | Part Wind Start       |                        |
|-------|-------|----------------------------|-----------------------|-----------------------|-----------------------|------------------------|
|       |       |                            | Locked Rotor Amps (Y) | Locked Rotor Amps (D) | Locked Rotor Amps (D) | Locked Rotor Amps (DD) |
| 60    | 220   | 318                        | 460                   | 1380                  | 763                   | 1230                   |
| 60    | 460   | 152                        | 240                   | 720                   | 329                   | 530                    |