



RC2-180BF Screw Compressor

Specifications

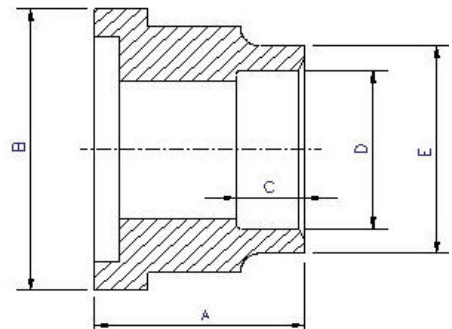
| | | | | |
|----------------------------------|-----------------------------------|--|-------|-----------------------------------|
| Compressor | Displacement | CFM | 60 Hz | 127 |
| | Rated Speed | Rpm | 60 Hz | 3550 |
| | Volume Ratio | Vi | | 2.6 (standard other Vi available) |
| | Nominal Hp | 66 Hp at 60 Hz | | |
| | Capacity Control | 33%, 66% & 100% Step Capacity Control, 33%~100% Continuous Stepless Capacity Controls | | |
| | Lubrication | Differential Pressure Feed Lubricant | | |
| Motor | Type | 3 Phase, 2 Pole, Squirrel Cage, Induction Motor | | |
| | Insulation | Class F | | |
| | Protection | 3 PTC Protection 1 per winding | | |
| Lubricant Charge | No internal oil separator or sump | | | |
| Hydrostatic Pressure test | lb/in ² G | 597 | | |
| Weight | Pounds | 860 | | |

Standard Compressors Accessories

- Modulating Slide Capacity
- Weather Proof Terminal Box for outdoor applications
- 115/1/60 Control Voltage
- Discharge Check Valve
- Discharge Service Valve (Discharge Stop Valve) with standard connection sizes and supplied with flanges and bushings
- Suction Service Valve (Suction Stop Valves) with standard connection sizes and supplied with flanges and bushings
- Suction Filter
- PSI Relief Valve
- Oil Sight Glass
- PT1000 for Reading Motor Temp
- INT69HBY supporting motor and discharge (PTC) temperature sensor protection as well as Phase Loss and Phase Reversal at Start Up Only

Ports

- External Oil Cooler
- Liquid Injection (into screw chamber)
- Economizer



Connections

| | |
|-----------------------------------|---------------------------|
| Discharge Stop Valve | 2" |
| Discharge Check Valve | 2" |
| Suction Stop Valve | 2 1/2" |
| Economizer | 5/8" solder |
| Liquid Injection (chamber) | 5/8" flare |
| Discharge Side | Copper Pipe Sizing 2 1/8" |
| Suction Side | Copper Pipe Sizing 2 5/8" |

| | A | B | C | D | E |
|----------------|-------|-------|-------|-------|-------|
| Discharge Side | 1.99" | 3.54" | 1.18" | 2.14" | 2.56" |
| Suction Side | 2.36" | 4.33" | 1.38" | 2.63" | 3.03" |

MCC & LRA

R22, R407C, R404A, R507A, R134a

| Hertz | Volts | Maximum Continuous Current | Y-Δ | | Part Wind Start | |
|-------|-------|----------------------------|-----------------------|-----------------------|-----------------------|------------------------|
| | | | Locked Rotor Amps (Y) | Locked Rotor Amps (D) | Locked Rotor Amps (D) | Locked Rotor Amps (DD) |
| 60 | 220 | 249 | 310 | 930 | 444 | 840 |
| 60 | 460 | 119 | 162 | 485 | 239 | 450 |