



RC2-140A Screw Compressor-R134a

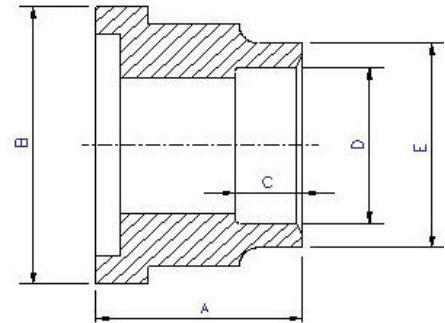
Specifications		Displacement	CFM	60 Hz	97	
Compressor	Rated Speed	Rpm	60 Hz	3550		
	Nominal Hp				32 at 60 Hz	
	Volume Ratio	Vi	2.6 (standard other Vi available)			
	Capacity Control	%	33%, 66% & 100% Step Capacity Control, 33%~100% Continuous Stepless Capacity Controls			
	Lubrication	Differential Pressure Feed Lubricant				
	Motor	Type	3 Phase, 2 Pole, Squirrel Cage, Induction Motor			
Insulation		Class F				
Protection		3 PTC Protection 1 per winding				
Lubricant Charge	Gallons	1.9				
Oil Heater	Watts	150				
Hydrostatic Pressure test	lb/in ² G	597				
Weight	Pounds	617				

Standard Compressors Accessories

- Modulating Slide Capacity
- Weather Proof Terminal Box for outdoor applications
- 115/1/60 Control Voltage
- 115/1/60 Crankcase heater
- Discharge Check Valve
- Discharge Service Valve (Discharge Stop Valve) with standard connection sizes and supplied with flanges and bushings
- Suction Service Valve (Suction Stop Valves) with standard connection sizes and supplied with flanges and bushings
- Oil Level Float Switch
- Suction Filter
- Oil Filter
- PSI Relief Valve
- Oil Sight Glass
- PT1000 for Reading Motor Temp
- INT69HBY supporting motor and discharge (PTC) temperature sensor protection as well as Phase Loss and Phase Reversal at Start Up Only

Ports

- External Oil Cooler
- Liquid Injection (into screw chamber)
- Economizer
- Suction, Discharge & Oil Service



Connections			A	B	C	D	E
	Discharge Stop Valve	1 1/2"					
	Discharge Check Valve	1 1/2"					
	Suction Stop Valve	2"					
	Economizer	5/8" solder					
	Liquid Injection (chamber)	3/8" flare					
	Discharge Side	Copper Pipe Sizing 1 5/8"	2.05"	2.95"	1.38"	1.64"	2.05"
	Suction Side	Copper Pipe Sizing 2 1/8"	1.99"	3.54"	1.18"	2.14"	2.56"

MCC & LRA		Optimized for R134a				
Hertz	Volts	Maximum Continuous Current	Y-Δ		Part Wind Start	
			Locked Rotor Amps (Y)	Locked Rotor Amps (D)	Locked Rotor Amps (D)	Locked Rotor Amps (DD)
60	220	151	153	460	211	440
60	460	72	80	240	110	230