



RC2-100BF Screw Compressor (Flooded)

Specifications

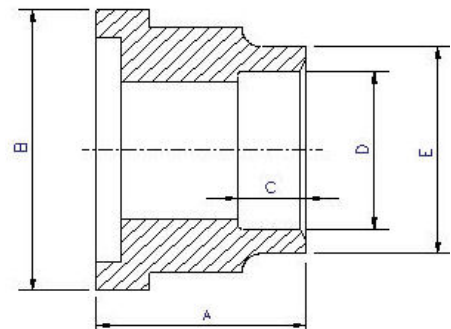
Compressor	Displacement	CFM	60 Hz	69
	Rated Speed	Rpm	60 Hz	3550
	Volume Ratio	Vi		2.6 (standard other Vi available)
	Nominal Hp	38 Hp at 60 Hz		
	Capacity Control	33%, 66% & 100% Step Capacity Control, 33%~100% Continuous Stepless Capacity Controls		
	Lubrication	Differential Pressure Feed Lubricant		
Motor	Type	3 Phase, 2 Pole, Squirrel Cage, Induction Motor		
	Insulation	Class F		
	Protection	3 PTC Protection 1 per winding		
Lubricant Charge	No internal oil separator or sump			
Hydrostatic Pressure test	lb/in ² G	597		
Weight	Pounds	584		

Standard Compressors Accessories

- Modulating Slide Capacity
- Weather Proof Terminal Box for outdoor applications
- 115/1/60 Control Voltage
- Discharge Check Valve
- Discharge Service Valve (Discharge Stop Valve) with standard connection sizes and supplied with flanges and bushings
- Suction Service Valve (Suction Stop Valves) with standard connection sizes and supplied with flanges and bushings
- Suction Filter
- PSI Relief Valve
- Oil Sight Glass
- PT1000 for Reading Motor Temp
- INT69HBY supporting motor and discharge (PTC) temperature sensor protection as well as Phase Loss and Phase Reversal at Start Up Only

Ports

- External Oil Cooler
- Liquid Injection (into screw chamber)
- Economizer



Connections

Discharge Stop Valve	2"					
Discharge Check Valve	2"					
Suction Stop Valve	2"					
Economizer	5/8" solder					
Liquid Injection (chamber)	3/8" flare					
Discharge Side	Copper Pipe Sizing 1 5/8"	A	B	C	D	E
Suction Side	Copper Pipe Sizing 2 1/8"	2.05"	2.95"	1.38"	1.64"	2.05"
		1.99"	3.54"	1.18"	2.14"	2.56"

MCC & LRA

R22, R407C, R404A, R507A, R134a

Hertz	Volts	Maximum Continuous Current	Y-Δ		Part Wind Start	
			Locked Rotor Amps (Y)	Locked Rotor Amps (D)	Locked Rotor Amps (D)	Locked Rotor Amps (DD)
60	220	142	153	460	211	440
60	460	68	80	240	113	235